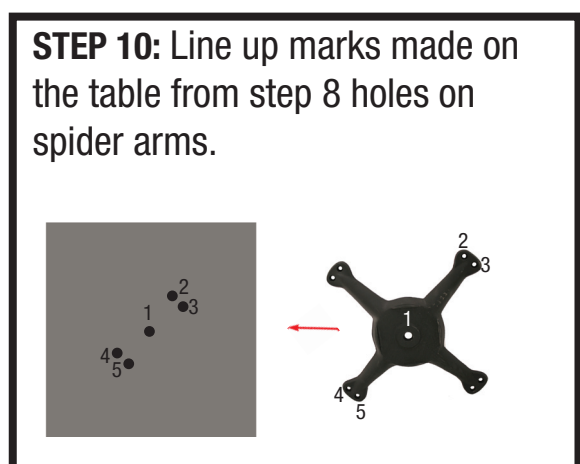
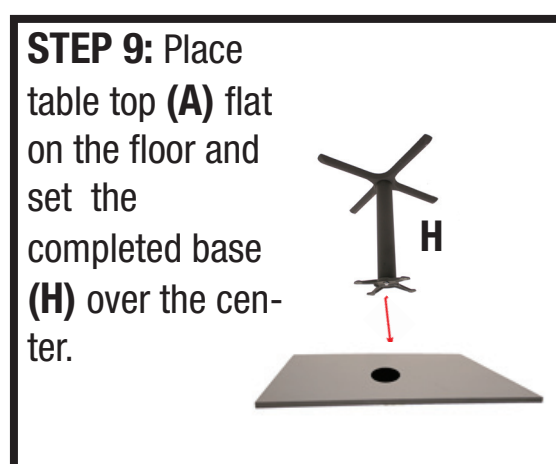
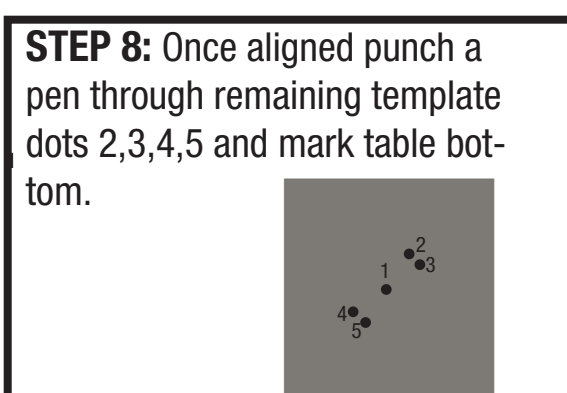
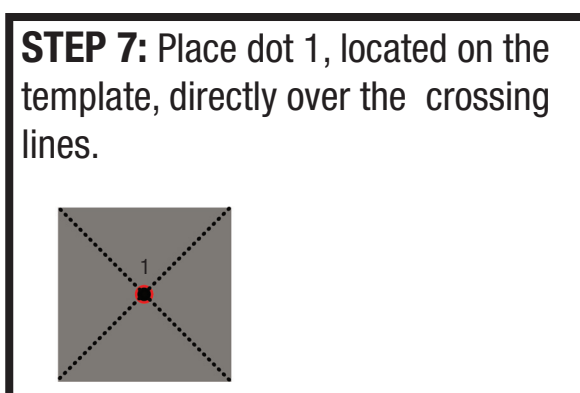
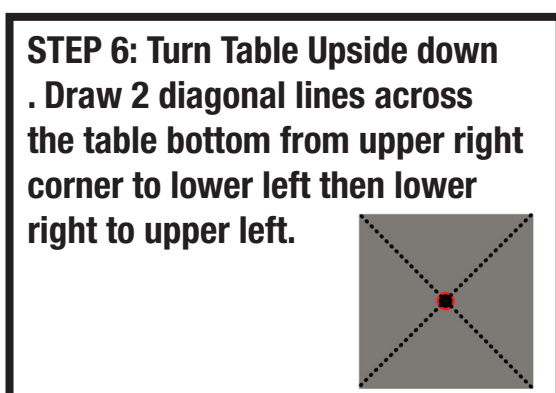
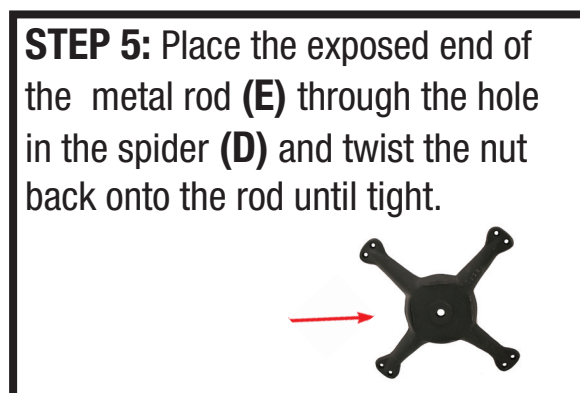
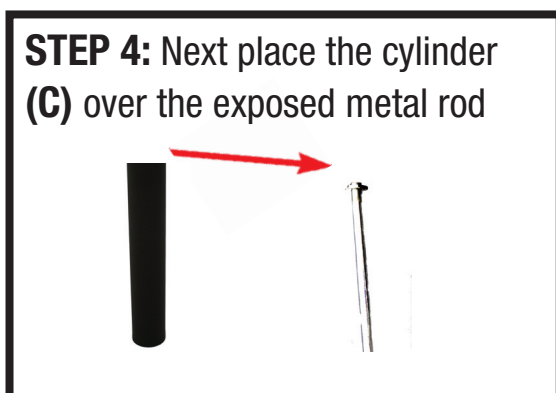
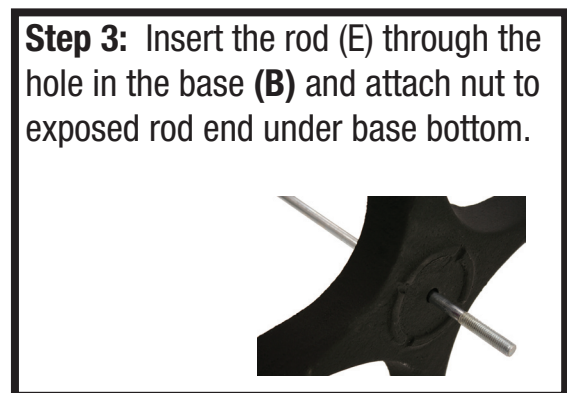
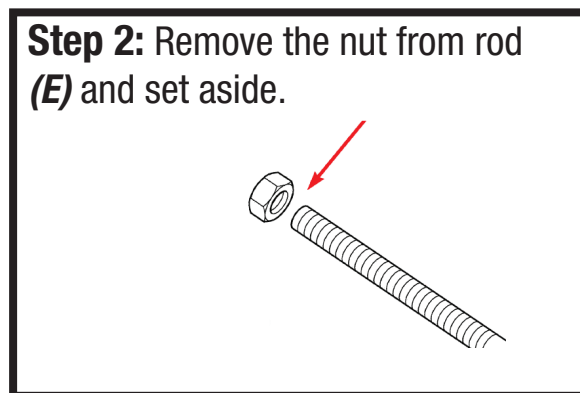
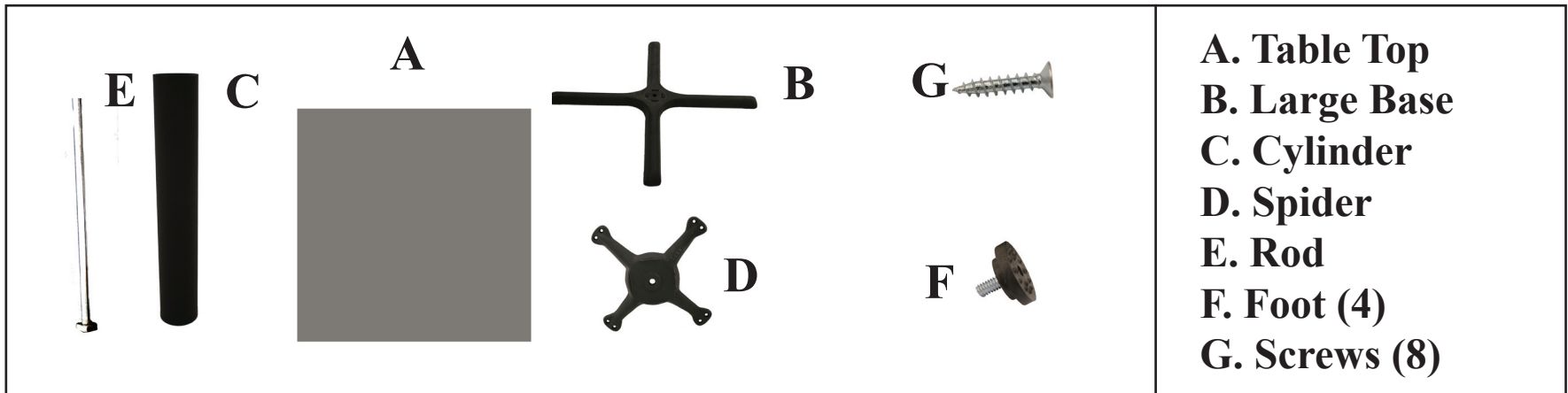




Square Table Top • INSTRUCTIONS

(MTBX22, MTBX30, MTBX36, TTSQ3030, TTSQ3636, TTSQ4242, TTSQ4848)

Organize your parts. You will need a drill, crescent wrench and a pencil. Two people are required for assembly.



IMPORTANT NOTICE

Place all wooden parts on a clean and smooth surface such as a rug or carpet to avoid the parts from being scratched. Check to be sure that you have all parts and hardware. Remove all wrapping materials, including staples & packing straps before you start to assemble. Do not tighten all screws/bolts until completely assembled. Keep all hardware parts out of reach of children.

-The Outside dots are for 48" Table tops and MTBX 36 X-Bases.

-The Inside dots are for 30", 36" and 42" Table tops and MTBX 22 & 30 X-Bases.

