

SeasonGuard



INSTALLATION INSTRUCTIONS & WARRANTY

Thank you for purchasing the Seasonsguard + retractable screen door by
Retractaway

This product was designed to work with all exterior hinged doors but you may
require additional instructions if your door has the following specifications:

- 1) The molding on the sides of the door has an angle more
than $\frac{1}{4}$ inch above top of door frame



- 2) The bottom sill can not be recessed more than 1" from
your brick mould



- 3) The door frame is not level or square



If your install does not have the issues above, please continue with the
installation. However, should your install have any of the above issues, please
visit our website at www.retractaway.com or contact customer service for
solutions

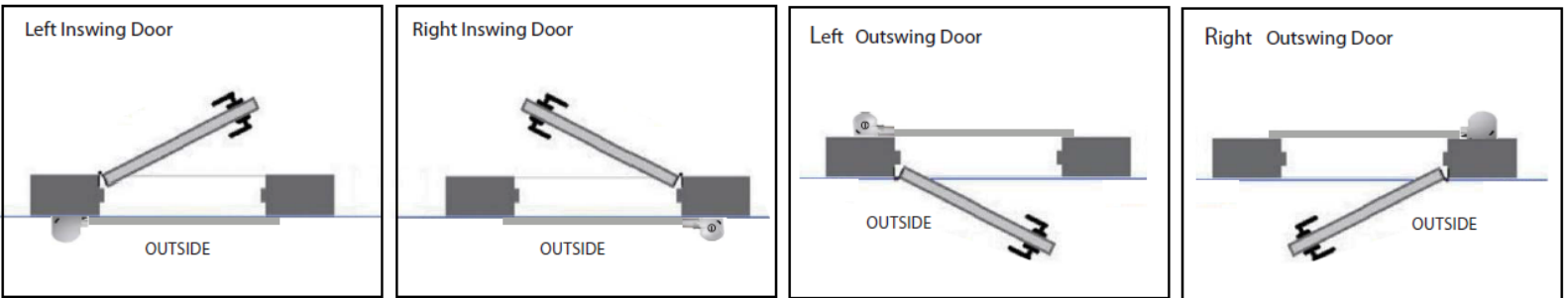
BEFORE INSTALLATION

CAREFULLY open box and lay contents on a flat surface preferably directly in front of the door frame that you are installing the screen door onto.

DO NOT unwrap the contents of the shrink wrapped parts. The wrap is designed to ensure that you can make an even, accurate cut of your top and bottom tracks and sill plate.

VERIFY that your install does not match any of the qualifications from the cover page of this manual. If it does please contact customer support or go to www.retractaway.com

DETERMINE the style of door you have:



CONTACT us if you need any help during the install of your new door, visit our website www.retractaway.com or email customercare@jrhome.com for helpful tips

INSTALLATION

- A. Start by measuring the widest part of your door opening
 - Record your measurement. Check twice, cut once
 - Add 13/16" (2.3cm) to your measurement to allow for length of Track end Cap
- B. Transfer Measurement to your wrapped track package. Use a permanent marker and square
 - Do not unwrap the track package until you have made your cut
 - TIP – Make sure the pieces in the package are even at the ends. This will ensure that your door will be square and the screen will move with ease
- C. Cut package to marked length using a Hack saw
 - Ensure cut line is square



INSTALLATION

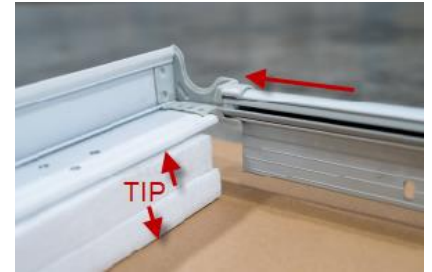
- D. LAYOUT mounting plate, top track and sill track on a flat surface as close to your install door frame as possible
- TIP – start your layout by positioning your top track on the floor closest to your door, then lay your mounting plate on the same side as the hinges of your door, your sill track should now be farthest away from your install door



- E. INSERT your top track into your mounting plate.
- Tip – slightly extending the inner PVC tube will allow you to make the connection easier



- F. INSERT your sill track into your mounting plate.
- Sill plate should be face down which will raise the mounting plate slightly.
 - Tip - Use styrofoam from the packaging to support the mounting plate.
 - You should now have an assembled frame on an elevated flat surface.



- G. ASSEMBLE Squaring brackets (part aa and bb).
- Open arms to 90 degrees
 - Attach aluminum cross bar by matching holes on bar to raised circles on the arms.
 - Assembly is correct when you have built a triangle with a 90 degree angle.



- H. INSERT Squaring brackets into corners.
- See sill frame and note the sticker which indicates which squaring bracket to use for your install.
 - The other squaring bracket will be used on the top track section.
 - To insert bracket, approach sill track at slight 45 degree angle and insert into track. Slide the bracket so that it meets with the mounting plate and push down to activate the locking tabs on the mounting plate. Repeat on top track.
 - Hook the squaring bracket support base (part x) over the inside top of the squaring bracket and slide towards the mounting plate. Press firmly at the mounting plate side to engage the lock. Repeat on top track.



- I. LIFT assembly and mount screen door to your door frame.
- Tip – An extra person maybe needed to help support the screen door

INSTALLATION

J. FASTEN mounting plate

- There are three holes provided at the top and bottom of the mounting plate, choose only one of the holes that best fits your install. Use the drill bit provided and drill two pilot holes (1 top and 1 bottom)
- Use the two patented mounting plate screws (part #8) to secure the mounting plate



K. FASTEN Bottom and Top track

Insert the drill guide into the bottom track endcap and drill a pilot hole. Remove the drill guide and secure endcap with a patented endcap screw (part #7)

TIP – DO NOT OVERTIGHTEN THE SCREW AS YOU MAY DAMAGE THE DOOR GLIDE



Repeat for top track



Remove the top and bottom squaring brackets

- ## L.
- Hold the handlebar in one hand and the housing assembly in the other (tip handlebar should be in the hand that you would use to close the door) Place the handlebar flat against the mounting plate and slide the handlebar end caps thru the mounting plate endcaps at the top and bottom.



- ## M.
- ATTACH the screen assembly. Line up the lip of the assembly housing with the groove in the mounting plate. Rotate the housing forward and apply pressure to engage clips at the top and bottom of housing



- ## N.
- SLIDE your screen door closed from the handlebar.

TIP – if your slide does not move freely. Unscrew the top endcap screw and continue to close the screen. The top track will self level. Rescrew the endcap and re-test door.

CONGRATULATIONS you have completed your install

