

ASSEMBLY INSTRUCTIONS

50" AND 60" Snow Plow Kit - 200 Runabout and Full Size UTV

Congratulations on the purchase of your Snow Plow Kit! These instructions will guide you through the assembly process. Carefully read these instructions and familiarize yourself with components before starting the assembly process.

NOTE: Use of this Snow Plow requires a winch (not included). Please call 1-800-643-7332, visit our website at www.amSPORTWORKS.com, or your local dealer, to purchase a winch kit or to see the full selection of accessories available for your vehicle.



I - Unpacking the Plow

Ensure that you have received (2) packages

- Push Tube Assembly
- Blade Assembly

II - Plow Assembly

- Rotation Lever – The rotation lever is shipped disconnected from the push tube assembly and will require installation as follows:
 - 1- Install lever as shown in Fig 1 by attaching the spring to both the lever and the push tube assembly
 - 2- Install the cross bolt and spacer as shown and tighten
- Blade Mounting – The blade assembly will need to be mounted to the push tube as follows:
 - 1- Align push tube and blade as shown in Fig 2
 - 2- Install the pre-assembled hardware such that the spacer is on the inside of the plow brackets with flat washers under the bolt head and under the nut as shown in Fig 3
 - 3- Ensure that the stop blocks are aligned such that the plow fully returns to the upright position.
- Trip Spring Mounting – After the blade has been mounted to the push tube assembly, the (2) trip springs will need to be installed:
 - 1- Install lower spring brackets as shown in Fig 4. Brackets should be snug, but still allow for rotation on the bolt.
 - 2- Loosen the eye bolt such that it is extended towards the plow as far as possible.
 - 3- Install trip spring to lower spring bracket and to upper blade mount as shown in Fig 4.
 - 4- Tighten the lower spring bracket eye bolt to pre-load the spring to the desired tension.
 - 5- Tighten the jam nut on the eye bolt to prevent rotation.
 - 6- Repeat for the second trip spring.

III - A-Arm Mounting Bracket Installation

The A-Arm mounting brackets mount to the underside of the lower A-Arm on the vehicle. These brackets can stay on the vehicle year round, or be removed in the off season.

- 1- The A-Arm mounting brackets should be installed loosely in order to obtain the proper centering of the final mounting assembly as shown in Fig 5.
- 2- With the mounting bracket centered on the vehicle, tighten the A-Arm mounting brackets so that they are secured to the vehicle as shown in Fig 5.

IV - Blade Attachment

With the A-Arm mount secured, the plow is ready for installation. **NOTE:** Blade assembly mounts to the Shear Pins as shown in Fig 6 for quick release. Also note that the Shear Pins are designed to fail if the plow strikes a solid object when plowing. New shear pins are available by calling your local dealer or American Sportworks Customer Service at the number below.

- 1- Depress the latch lever to open the connection jaws as shown in Fig 6.
- 2- Engage the plow latch openings on the shear pins and release the latch lever to



Fig 1



Fig 2

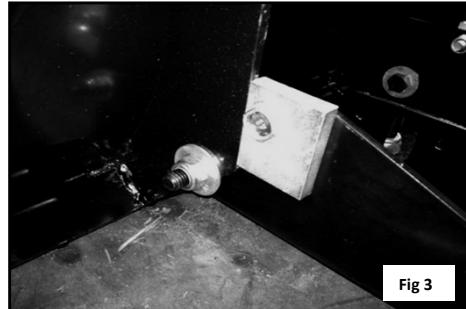


Fig 3

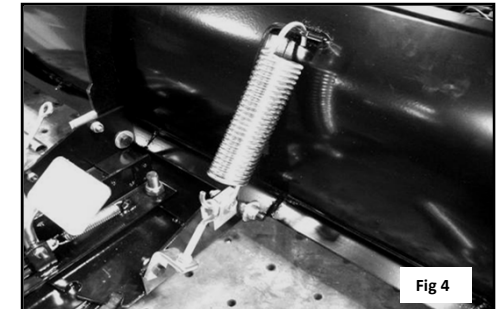


Fig 4



Fig 5



Fig 6

SNOW PLOW ASSEMBLY

Ref No	Part No	Description	QTY
1	15327	KIT, 50" SNOW PLOW - UNIV MOUNT (ALL PARTS AS SHOWN)	1
2	15333	KIT, 60 SNOW PLOW UNIV MOUNT (ALL PARTS AS SHOWN)	1
3	15328	ASM, BLADE 50" UNIV MOUNT	1
4	15334	ASM, BLADE 60 UNIV MOUNT	1
5	15336	BLADE, SCRAPER 50"	1
6	15335	BLADE, SCRAPER 60"	1
7	15329	ASM, PUSH TUBE UNIV MOUNT	1
8	15354	ASM, SKID PAD - UNIV SNOWPLOW	2
9	15330	SPRING, BLADE TRIP - UNIV MOUNT	2
10	15331	PIN, SHEAR UNIV MOUNT BLADE	2
11	15337	SPRING, ROTATION LEVER	1
12	15348	SPRING, LATCH LEVER - UNIV PLOW	1
13	15410	BOLT, 3/8-16 X 1.75 CARRIAGE G5 ZN	10
14	15411	NUT, 3/8-16 NYLOC G5 ZN	13
15	15392	BOLT, 3/8-16 X 1.25 HHCS G5 ZN	2
16	N/A	STOP, BLADE ROTATION	2
17	15393	BOLT, 5/16-18 X 3.00 EYE ZN	2
18	15394	NUT, 5/16-18 NYLOC G5 ZN	8
19	9176	BOLT, 5/16-18 X 1.00 HHCS G5 ZN	2
20	N/A	BRACKET, TRIP SPRING	2
21	15395	BOLT, 7/16-14 X 1.50 HHCS G5 ZN	2
22	15396	WASHER, 7/16 FLAT AN	4
23	15397	SPACER, 12.7ID X 22.2OD X 9.5 STEEL ZN	2
24	15398	NUT, 7/16-14 NYLOC G5 ZN	2
25	15399	BOLT, 5/8-11 X 2.50 HHCS G5 ZN	1
26	15400	NUT, 5/16-18 G5 ZN	4
27	15401	WASHER, 3/8 FLAT	6
28	15402	BOLT, 5/16-18 X 0.75 CARRIAGE G5 ZN	1
29	15403	SPACER, 8.7ID X 12.7OD X 16 STEEL ZN	1
30	2383	BOLT, 5/16-18 X 2.50 HHCS G5 ZN	1
31	15404	PEDAL, BLADE ROTATION - ZN	1
32	15405	NUT, 5/8-11 NYLOC G5 ZN	1
33	15406	CLIP, 10.0ID X 20.0OD X 1.6 E	2
34	15407	HAIRPIN CLIP, .063 X 1.38 ZN	4
35	15408	PIN, 3/8 X 2.75 CLEVIS ZN	2
36	15409	BOLT, 5/16-18 X 2.50 CARRIAGE G5 ZN	4
37	9060	WASHER, 5/16 FLAT ZN	4

