

## Manual Contents:

General Information .....	2
Operator Safety .....	2
Parts and Features .....	4
Assembly .....	4
Operation .....	4
Storage .....	4
Maintenance .....	5
Troubleshooting .....	5
Parts List .....	6
Warranty .....	7

## General Information

The illustrations in this document are representative. The unit may vary from the images displayed. **LEFT** and **RIGHT** are referenced from the operator's position.

The use of Note in the text indicates clarifications, exceptions, or alternatives to the procedures given.




All language translations of this document are derived from the original English source file.


## Operator Safety


**Save these instructions for future reference.** This manual contains safety information to make you aware of the hazards and risks associated with the product and how to avoid them. It also contains important instructions that should be followed during the initial set-up, operation, and maintenance of the product.


It is important that you read and understand these instructions before attempting to start or operate this equipment.

### Safety Alert Symbols and Signal Words

The safety alert symbol  identifies safety information about hazards that can result in personal injury. A signal word (DANGER, WARNING, or CAUTION) is used with the alert symbol to indicate the likelihood and the potential severity of injury. In addition, a hazard symbol may be used to represent the type of hazard.

 **DANGER** indicates a hazard which, if not avoided, will result in death or serious injury.

 **WARNING** indicates a hazard which, if not avoided, could result in death or serious injury.

 **CAUTION** indicates a hazard which, if not avoided, could result in minor or moderate injury.

**NOTICE** indicates an action that could result in damage to the product.

#### **WARNING**

This product can expose you to chemicals including lead and lead compounds, which are known to the State of California to cause cancer and birth defects or other reproductive harm. For more information go to [www.P65Warnings.ca.gov](http://www.P65Warnings.ca.gov).

Symbol	Meaning
	Safety information about hazards that can result in personal injury.
	Read the directions for use of brush cutter before operating the machine.
	Thrown objects hazard - Wear eye protection. Noise hazard - Wear ear protection.
	Wear safety gloves and boots.
	Protect the machine from rain and damp environments.
	Blade thrust hazard - Risk of a loss of control of the unit if the blade contacts a solid object it can not cut.
	Cutting hazard from the blade - Keep hands and feet away from the blade.
	Thrown objects hazard - The blade can throw objects if it contacts them.
	All bystanders must be kept at least 50 ft (15m) away from machine.

## Safety and Handling



### WARNING



Do not operate the brush cutter attachment before reading all Safety and Handling sections.

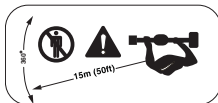
- Stay alert. Watch what you are doing when operating a power tool. Do not operate the brush cutter under the influence of alcohol, drugs or medication or when you are tired or sick.
- Do not operate the brush cutter for any other purpose except that for which it is intended.
- Use only manufacturer's genuine recommended replacement parts and accessories.

### Before using the brush cutter

- The operation of any power tool can result in foreign objects being thrown into your eyes, which can result in severe eye damage. Always wear safety glasses with side shield. Always wear nonslip safety shoes, ear muffs and gloves.
- Know the brush cutter controls and learn how to stop operating the unit quickly in an emergency by releasing the "ON / OFF" switch.
- Before using the brush cutter, make sure that the blade assembly is not worn or damaged.
- Dress properly. Do not wear loose clothing or jewelry or long hair which can be caught in moving parts.
- Do not operate power tools in explosive atmospheres, such as in the presence of flammable liquids, gases or dust. Power tools can create sparks which may ignite the dust or fumes.
- Operate only in daylight or good artificial light. Never operate in bad weather, especially when there is a risk of lightning.
- Keep your work area clean and well lit.



### WARNING



Bystanders must be kept at least 50 ft (15 m) away from cutting head during operation.

- Stop the machine immediately if approached.
- Be careful when turning or swinging the unit.
- Look before turning or changing direction.

## Operating the brush cutter

- Walk with the brush cutter. Never run.
- To maintain full control of the brush cutter, keep a proper footing at all times with your weight evenly balanced over both feet and never over reach. Use both hands when operating the brush cutter.
- Always keep the handle dry and free from oil and grease.
- Do not force the brush cutter. Always use the correct tool for your application.
- Do not use the brush cutter if the switch does not turn it ON and OFF.
- Store idle power tools out of the reach of children. Do not allow persons unfamiliar with the power tool or these instructions to operate the power tool.



### WARNING



- Keep all body parts, especially hands away from moving parts when the brush cutter is running.
- Always stop the brush cutter and remove battery if the following conditions apply:
  - before clearing any blockage.
  - before assembling, checking, cleaning or working on the unit.
  - whenever leaving the brush cutter unattended.
  - If the unit becomes jammed.



### WARNING



This tool is capable of throwing objects that could result in serious injury.

- Inspect the work area and remove stones, pieces of metal or other objects that could be thrown.



### WARNING



Blade Thrust is a sudden movement of the cutting head when it contacts an object, it can not cut through. Blade Thrust can lead to a loss of control of the tool which could result in serious injury to the operator or bystanders.

- Use caution when cutting near solid objects such as rocks, trees or posts.

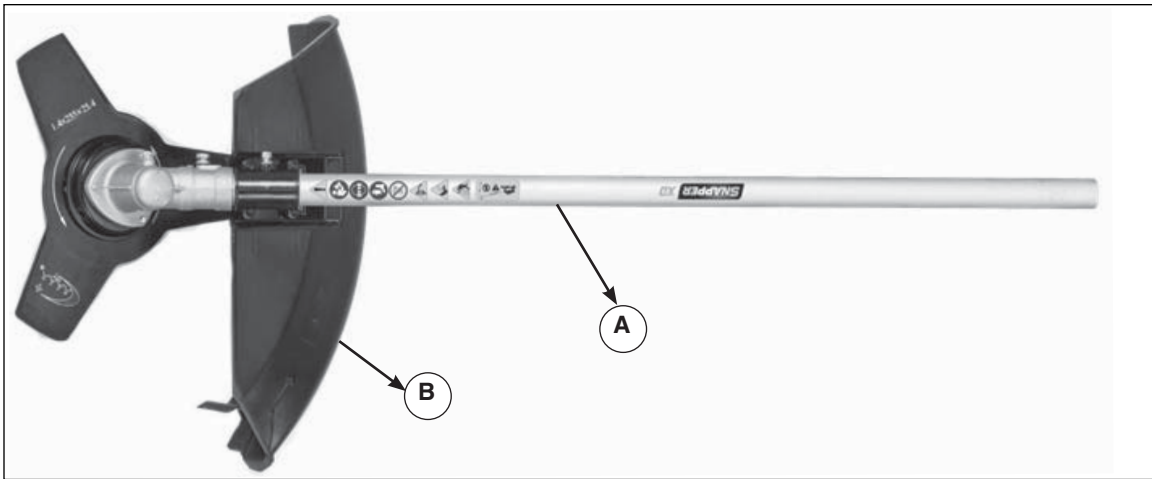


Figure 1

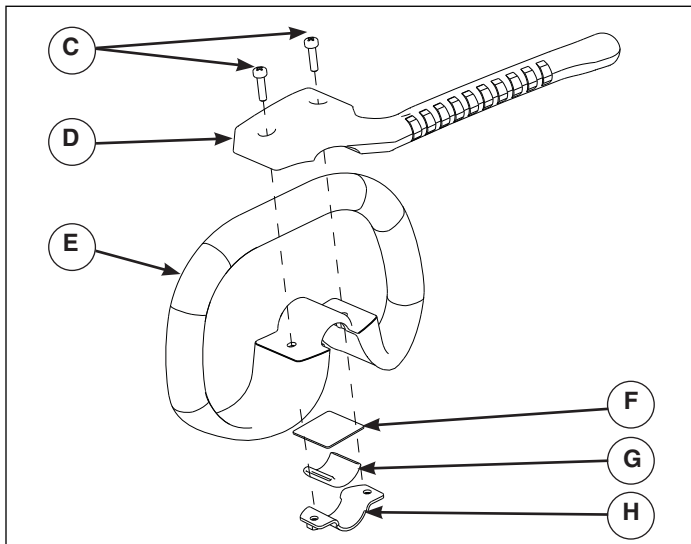


Figure 2

## Parts and Features

- Ⓐ Brush cutter attachment
- Ⓑ Debris guard

## Assembly (Figure 2)

1. Remove the existing auxiliary handle from the pole.
2. Slide clamp (H) over rubber sleeve (G).
3. Slide pole through the auxiliary handle (E).
4. Slide washer (F) over the pole.
5. Insert two screws (C) through holes in handle extension (D).
6. Line up holes in handle extension (D) with holes in auxiliary handle (E) and holes in clamp (H). Attach handle extension to auxiliary handle and the pole using screws (C) and nuts on the clamp, with the distance no less than 15cm from the coupling. Tighten with a wrench. Make sure the direction of the auxiliary handle is opposite to the blade.

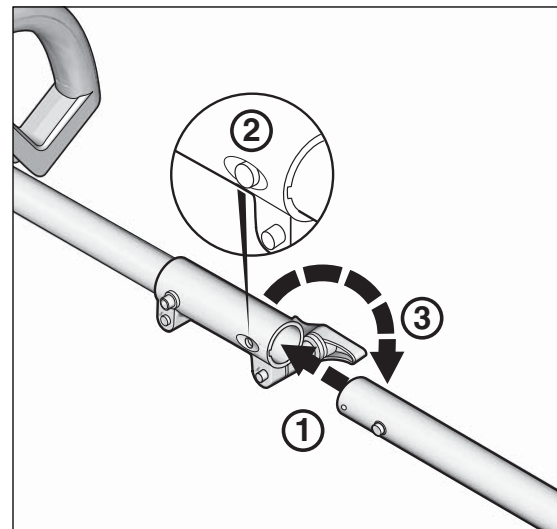


Figure 3

## Operation (Figure 3)

- ① Insert brush cutter pole into pole on power head.
- ② Press button on pole to allow power head pole to lock into place.
- ③ Tighten knob on power head pole.

## Storage

When transporting or storing the brush cutter, always remove the battery. Proper handling of the brush cutter will reduce the risk of personal injury from the cutter blades.

# Maintenance

Periodically check the brush cutter for misalignment, binding of moving parts, breakage of parts and any other condition that may affect the brush cutter operation. If damaged, have the unit repaired before use.

Keep cutting tools sharp and clean. Properly maintained cutting tools with sharp cutting edges are less likely to bind and are easier to control.

All maintenance, repair and inspection work should be performed by an authorized service center.

## Maintenance Chart

Refer to the following table for routine maintenance.

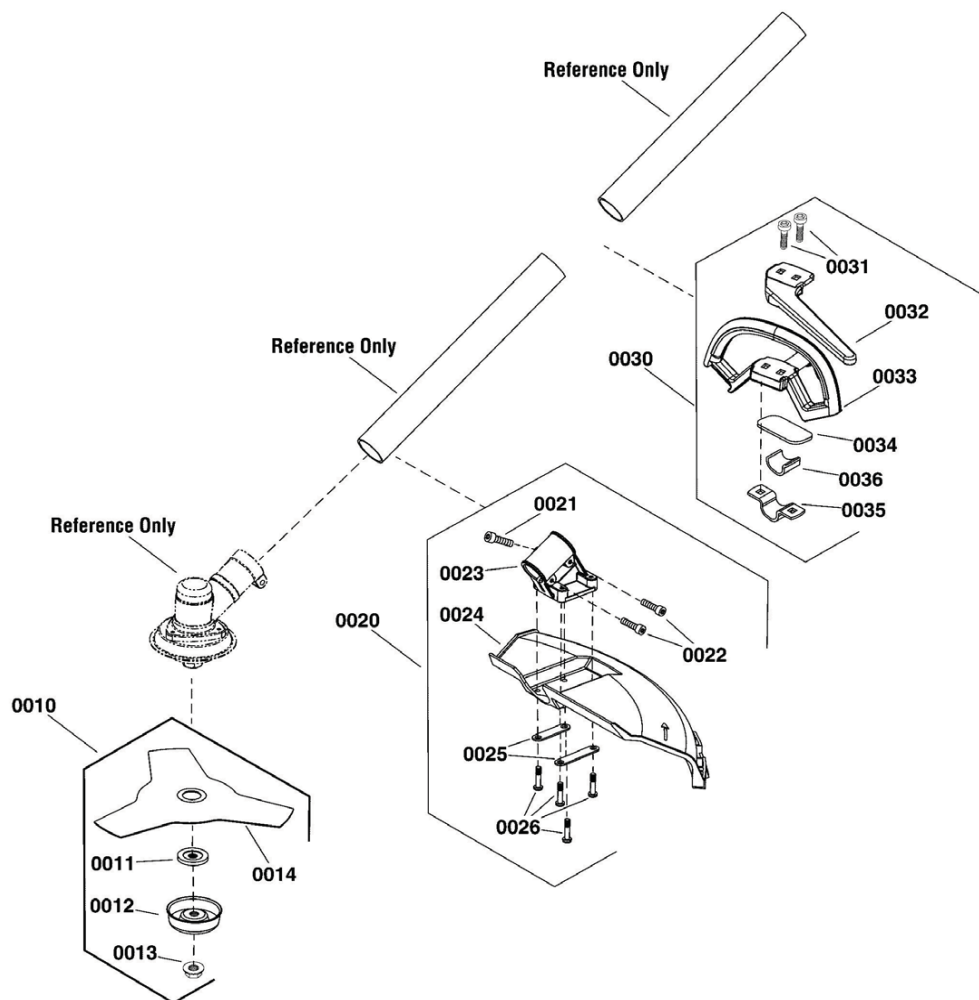
Requirements	Actions	Before start	After finish
<b>Cutting System</b>	Visual inspection	•	•
	Inspect and check assembly	•	
<b>All accessible fasteners</b>	Check	•	
	Retighten	•	•

# Troubleshooting

The following chart lists problems, causes and corrective actions if your brush cutter does not operate properly. If these do not correct the problem, contact an authorized service center.

Problem	Possible Cause	Correction
<b>Motor runs but blades remain stationary</b>	Drive cables not engaged.	Disconnect the poles; make sure the drive cables engage as poles are connected.
<b>Cutting tool too hot</b>	Dull cutting blades.	Replace the blade assembly.
<b>Excessive vibration</b>	Loose fasteners.	Tighten fasteners.

## Exploded View



## Parts List

ITEM NO.	PART NO.	DESCRIPTION	QTY
0010	771012	BLADE ASSEMBLY	1
0011	-----	PLATE, Pressure	1
0012	-----	CUP	1
0013	-----	NUT, M10-1.25	1
0014	-----	BLADE	1
0020	771013	GUARD ASSEMBLY	1
0021	-----	CAPSCREW, M5-14	1
0022	-----	CAPSCREW, M5-20	2
0023	-----	CLAMP	1
0024	-----	GUARD	1
0025	-----	PLATE	2
0026	-----	BOLT, M5-20	4
0030	771520	KIT, HANDLE	1
0031	-----	SCREW, PHILLIPS	2
0032	-----	HANDLE, AUXILIARY	1
0033	-----	HANDLE	1
0034	-----	PAD	1
0035	-----	CLAMP	1
0036	-----	BRACE	1

**LIMITED WARRANTY**

Briggs & Stratton warrants that, during the warranty period specified below, it will repair or replace, free of charge, any part that is defective in material or workmanship or both. Transportation charges on product submitted for repair or replacement under this warranty must be borne by purchaser. This warranty is effective for and is subject to the time periods and conditions stated below. For warranty service, find the nearest Authorized Service Dealer in our dealer locator map at [www.snapper.com](http://www.snapper.com). The purchaser must contact the Authorized Service Dealer, and then make the product available to the Authorized Service Dealer for inspection and testing.

**There is no other express warranty. Implied warranties, including those of merchantability and fitness for a particular purpose, are limited to the warranty period listed below, or to the extent permitted by law. Liability for incidental or consequential damages are excluded to the extent exclusion is permitted by law.** Some states or countries do not allow limitations on how long an implied warranty lasts, and some states or countries do not allow the exclusion or limitation of incidental or consequential damages, so the above limitation and exclusion may not apply to you. This warranty gives you specific legal rights and you may also have other rights which vary from state to state or country to country.\*\*

**WARRANTY PERIOD**

Item	Consumer Use	Commercial Use
Accessory/Attachment/Equipment	36 months	None

\*\* In Australia - Our goods come with guarantees that cannot be excluded under the Australian Consumer Law. You are entitled to a replacement or refund for a major failure and for compensation for any other reasonably foreseeable loss or damage. You are also entitled to have the goods repaired or replaced if the goods fail to be of acceptable quality and the failure does not amount to a major failure. For warranty service, find the nearest Authorized Service Dealer in our dealer locator map at [BRIGGSandSTRATTON.COM](http://BRIGGSandSTRATTON.COM), or by calling 1300 274 447, or by emailing or writing to [salesenquires@briggsandstratton.com.au](mailto:salesenquires@briggsandstratton.com.au), Briggs & Stratton Australia Pty Ltd, 1 Moorebank Avenue, NSW, Australia, 2170.

The warranty period begins on the date of purchase by the first retail or commercial consumer. "Consumer use" means personal residential household use by a retail consumer. "Commercial use" means all other uses, including use for commercial, income producing or rental purposes. Once a product has experienced commercial use, it shall thereafter be considered as a commercial use product for purposes of this warranty.

To ensure prompt and complete warranty coverage, register your product on-line at [www.onlineproductregistration.com](http://www.onlineproductregistration.com).

Save your proof of purchase receipt. If you do not provide proof of the initial purchase date at the time warranty service is requested, the manufacturing date of the product will be used to determine the warranty period. Product registration is not required to obtain warranty service on Briggs & Stratton products.

**ABOUT YOUR WARRANTY**

Warranty service is available only through Snapper Authorized Service Dealers. This warranty covers only defects in materials or workmanship. It does not cover damage caused by improper use or abuse, improper maintenance or repair, or normal wear and tear.

**Improper Use and Abuse** - The proper, intended use of this product is described in the Operator's Manual. Using the product in a way not described in the Operator's Manual or using the product after it has been damaged will not be covered under this warranty. Warranty coverage will also not be provided if the serial number on the product has been removed or the product has been altered or modified in any way, or if the product has evidence of abuse such as impact damage or water/chemical corrosion damage.

**Improper Maintenance or Repair** - This product must be maintained according to the procedures and schedules provided in the Operator's Manual, and serviced or repaired using genuine Briggs & Stratton parts or equivalent. Damage caused by lack of maintenance or use of non-original parts is not covered by warranty.

**Normal Wear and Tear** - Like most mechanical devices, your unit is subject to wear even when properly maintained. This warranty does not cover repairs when normal use has exhausted the life of a part or the equipment. Maintenance and wear items such as filters, belts, cutting blades, and brake pads (except engine brake pads) are not covered by warranty due to wear characteristics alone, unless the cause is due to defects in material or workmanship.

**Other Exclusions** - This warranty excludes damage due to accident, abuse, modifications, alterations, improper servicing, freezing or chemical deterioration. Attachments or accessories that were not originally packaged with the product are also excluded. This warranty does not include used, reconditioned, second-hand, or demonstration equipment or engines. This warranty also excludes failures due to acts of God and other force majeure events beyond the manufacturer's control.