



# ELECTRIC PRESSURE WASHER *INSTRUCTION MANUAL*

*BY01-HBE*



**WARNING:** *Do not use the appliance without reading the instruction manual.*

## CONTENT

| Chapter                                               | Page |
|-------------------------------------------------------|------|
| 1.Application                                         | 1    |
| 2.Technical data                                      | 1    |
| 3. Product overview                                   | 1    |
| 4. Safety instructions                                | 2    |
| 5. Operating instructions                             | 4    |
| 6. After use instructions                             | 7    |
| 7. Environmental protection                           | 7    |
| 8. Maintenance, cleaning, repair                      | 7    |
| 9. Trouble shooting                                   | 9    |
| 10. WEEE - Waste of electric and electronic equipment | 10   |
| 11. Warranty                                          | 10   |

## APPLICATION

Your electric pressure washer has been designed for outdoor cleaning.

Cleaning of: machines, vehicles, structures, tools, facades, terraces, gardening tools...

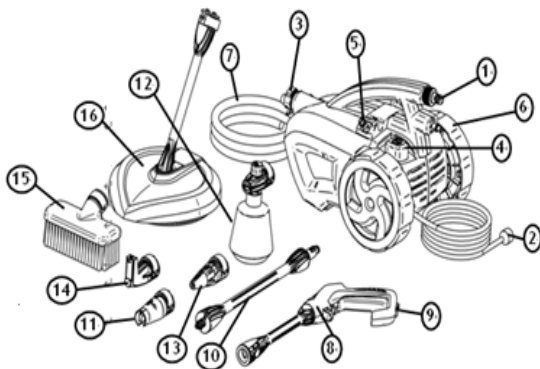
**WARNING:** Read this manual and general safety instruction carefully before using the appliance, for your own safety. Your power tool should only be passed on together with these instructions.

## TECHNICAL DATA

|                       |            |
|-----------------------|------------|
| Mo                    | Brush      |
| Max. pressure         | 1500PSI    |
| Max. flow             | 1.50GPM    |
| Current               | 11A        |
| Voltage               | 120V/60 Hz |
| Max. water temperatur | 40° C      |

## 3. PRODUCT OVERVIEW

1. Water inlet coupling
2. Electrical plug
3. Water outlet
4. Switch
5. Nozzle storage
6. Wheel
7. High pressure hose
8. Trigger gun
9. Trigger lock
10. Lance
11. Adjustable nozzle
12. High pressure detergent bottle
13. Turbo nozzle (optional)
14. Angle nozzle (optional)
15. Brush (optional)
16. Patio Cleaner (optional)



#### 4. SAFETY INSTRUCTIONS

- The appliance is designed solely for outdoor private use and NOT for commercial use. Please keep it away from heat, direct sunlight, moisture and rain, frost and sharp edges.
- Do not let people who have not been trained in the use of a high pressure washer nor read the instruction manual operate the machine!
- Electric pressure washers shall not be used by children or untrained personnel.
- Children should be supervised to ensure that they do not play with the appliance.
- Before starting up your machine please check it carefully for any defects. If you find any, do not start up your machine and contact your local distributor.
- Check especially the insulation of the electric cable should be faultless and without any cracks. If the electric cable is damaged, an authorized local service centre should replace it.
- **WARNING:** High pressure jets can be dangerous if subject to misuse. The jet must not be directed at persons, live electrical equipment or the appliance itself.
- **WARNING:** Do not use the appliance within range of persons unless they wear protective clothing.
- Do not direct the jet against yourself or others in order to clean clothes or foot-wear.
- Hold the spray lance firmly with both hands.
- The operator and anyone in the immediate vicinity of the site of cleaning should take action to protect them from being struck by debris dislodged during operation.
- Wear goggles and protection clothes during operation.
- **WARNING:** This appliance has been designed for use with pressure washer detergent only. Using other cleaning products or chemical products may affect the safety of the appliance.
- Disconnect from electrical power supply before carrying out user maintenance.
- To ensure appliance safety, use only original spare parts from the manufacturer or approved by the manufacturer.
- Do not use the appliance if a supply cord or important parts of appliance are damaged, e.g. safety device, high pressure hose and trigger gun.
- Do not use the appliance with wet hands. If the appliance is humid or wet, unplug it immediately. Do not put it in water.
- Tires and tire valves may be damaged by the high-pressure jet and then burst.
- Never use the machine in an environment where there could be a danger of explosion.
- It is not allowed to clean asbestos-containing surfaces with high pressure.
- This Electric pressure washer must not be used at temperatures below 0°C
- **WARNING:** High pressure hoses, fittings and couplings are important

for the safety of the appliance. Use only hoses, fittings and couplings recommended by the manufacturer.

- **WARNING:** Inadequate extension cables can be dangerous. Cables on reels should always be completely unwinded to prevent the cable from overheating.
- If an extension cable is used, the plug and the socket must be waterproof and comply with the below-mentioned requirements for length and cable dimensions.
  - 1.0mm<sup>2</sup> max. 12.5m
  - 1.5mm<sup>2</sup> max. 20m
- If the electric cable is damaged, it must be replaced by the manufacturer or his service agent or similarly qualified person in order to avoid a hazard.

## MAINS POWER CONNECTION

The following should be observed when connecting the electric pressure washer to the electric installation:

- The electric supply connection shall be made by a qualified electrician and comply with IEC 60364-1
- It is recommended that the electric supply to this appliance should include either a residual current device that will interrupt the supply if the leakage current to earth exceeds 30 mA for 30 ms.

## WATER CONNECTION

- Connection to the public mains according to regulations.
- Inlet hose can be connected to the water mains with a max. inlet pressure of 10 bars.



This high pressure washer is in Europe only allowed to be connected with the drinking

water mains, when an appropriate mains backflow preventer has been installed, Type BA according to EN 1717. The length of the hose between the backflow preventer and the high pressure washer must be at least 10 metres to absorb possible pressure peaks (min diameter ½ inch).

Operation by suction (for example from a rainwater vessel) is carried out without backflow preventer.

As soon as water has flown through the BA valve, this water is not considered to be drinking water any more.

## IMPORTANT!

Only use water without any impurities. If there is a risk of sand particles in the inlet water (i.e. from your own well), an additional filter should be mounted.

## SAFETY DEVICES

- The unloader valve can reduce pressure if it exceeds pre-set values.
- Locking device (12) on trigger gun (11) (see illustration at the beginning of this manual): The trigger gun (11) features a locking device (12). When the knob is activated, the trigger gun (11) cannot be operated.

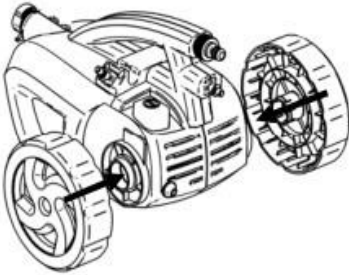
## THERMAL SENSOR

A thermal sensor protects the motor against overloading. The machine will restart after a few minutes when the thermal sensor has cooled.

## OPERATION INSTRUCTIONS

### 5.1 Mounting of wheels

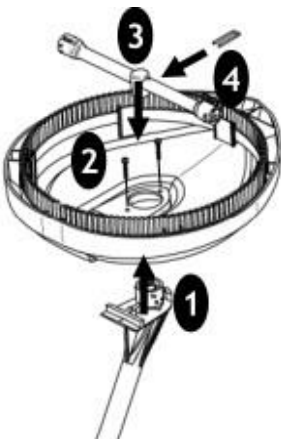
Click the wheels (6) into the machine



### 5.2 Mounting of Patio Cleaner

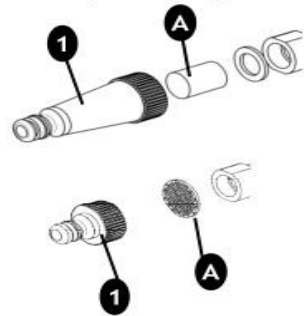
1. Insert the extension lance into to the housing
2. Fix the extension lance with the two screws to the housing
3. Insert the rotor arm into the extension lance
4. Insert the U-pin to fix the rotor arm.

NOTE: Make sure the rotor arm is properly fixed to the extension lance with the U-pin



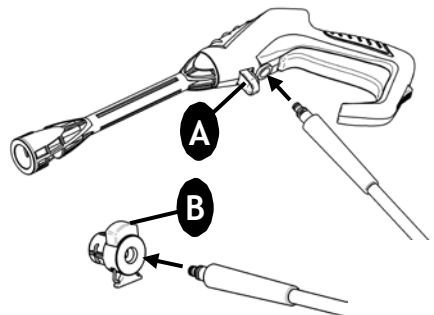
### 5.3 Connection of garden hose

1. Screw the water inlet coupling (1) tight on to the water inlet  
**Note:** The inlet filter must always be fitted in the water inlet pipe to filter out sand, lime stone and other impurities as these will damage the pump valves.  
**Caution:** Failure to fit the filter will invalidate the guarantee.
2. Connect the garden hose with a standard quick coupling



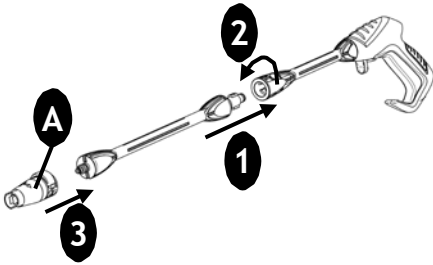
### 5.4 Mounting of high pressure hose

1. Attach the high pressure hose (7) to the trigger gun (8) and machine.
2. Detach the high pressure hose by pressing the pawl (A) or button (B)



## 5.5 Mounting of lance and nozzle

1. Push the lance (10) into the trigger gun (8)
2. When inserted turn it.  
**Caution:** Make sure the lance (10) is properly fixed to the gun (8)
3. Attach the nozzles (11-16).  
**Caution:** When attaching the nozzle (11-16) the button (A) on the nozzle (11-16) should come out again.  
Check before activating the trigger that the nozzle (11-16) is properly fixed.



## 5.6 Water connection

**IMPORTANT!** Only use water without any impurities. If there is a risk of sand particles in the inlet water (i.e. from your own well), an additional filter should be mounted.

1. Let the water run through the water hose before connecting it to the machine to prevent sand and dirt from penetrating the machine. Note: Check that the filter is fitted in the water inlet pipe and that it is not clogged up.
2. Connect the water hose to the water supply by means of the quick connector (inlet water, max. pressure: 10 bar, max. temperature: 40 °C).
3. Turn on the water.

## 5.7 Start/stop of the machine

The trigger gun (8) and lance (10) is affected by a thrust during operation - therefore always hold it firmly with both hands.

**IMPORTANT:** Point the nozzle at the ground.

1. Check that the machine is in upright position. NOTE: Do not place the machine in high grass!
2. Release the trigger lock (9)
3. Activate the trigger of the trigger gun (8) and let the water run until all air has escaped from the water hose.
4. Press the Start/stop switch (4).
5. Activate the trigger of the trigger gun (8).
6. Always adjust the distance and thus the pressure of the nozzle to the surface, which is to be cleaned.

Do not cover the machine during operation or use it in a room without adequate ventilation!

**NOTE:** If the machine is left or not used for 5 minutes, it must be switched off on the start/stop switch (4) "O":

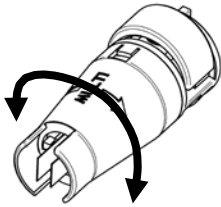
1. Press the start/stop switch (4) "O".
  2. Disconnect the electrical plug (2) from the socket.
  3. Shut off the water supply and activate the trigger of the trigger gun (8) to relieve the machine of pressure.
  4. Lock the trigger gun (9)
- When releasing the trigger of the trigger gun (8), the machine automatically stops. The machine will

start again when you re- activate the trigger gun (8)

### 5.8 Adjustable Nozzle

The pressure can be adjusted by turning the adjustable nozzle (11).

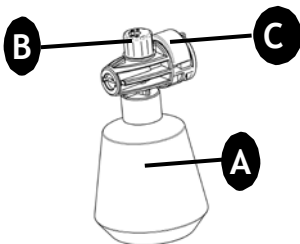
**WARNING:** Do not do this under operation to avoid that the hand hits the jet.



### 5.9 High pressure detergent bottle

1. Unscrew the container (A) from the high pressure detergent bottle (12).
2. Add detergent to the container (A) and screw the container to the high pressure detergent bottle (12)
3. Adjust the amount of detergent with the button (B)
4. Foam equipped quick connector. Press (C), then insert into the gun.

**Caution:** When attaching the detergent bottle, the button (C) should come out again. Check before activating the trigger that the nozzle is properly fixed.



### 5.10 Angle Nozzle (optional)

The angle nozzle (14) can be used for many applications e.g. cleaning the underbody of a car, underneath a lawn mover without being splashed back with debris, etc.

After attaching the angle nozzle (14), be aware of the moment on the lance trigger gun (8) and lance (10) as the jet is coming out perpendicular to these.

### 5.11 Patio Cleaner (optional)

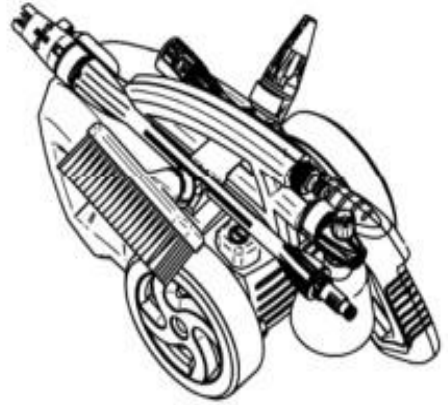
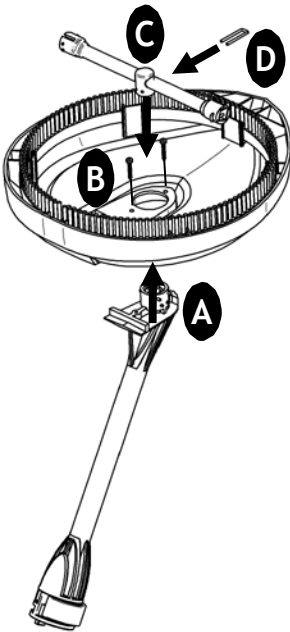
The patio cleaner is a powerful accessory for cleaning patio, driveways, etc.

The patio cleaner is a powerful accessory for cleaning patio, driveways, etc.

1. Insert the extension lance (A) into to the housing (B).
2. Fix the extension lance (A) with the two screws to the housing (B).
3. Insert the rotor arm (C) into the extension lance.
4. Insert the U-pin (D) to fix the rotor arm (C).

**NOTE:** Make sure the rotor arm (C) is properly fixed to the extension lance (A) with the U-pin (D).

**NOTE:** Do not use the Patio Cleaner (16) as a broom but let it surf smoothly over the surface.



## AFTER USE INSTRUCTIONS

The machine should be stored in a frost-free room!

Pump, hose and accessories should always be emptied of water prior to storing as follows:

1. Stop the machine (press the start/stop switch (4) "O" and detach water hose, high pressure hose (7) and nozzle (11-16)
2. Restart the machine (4) and activate the trigger of the trigger gun (8). Let the machine run until no more water runs through the trigger gun (8)
3. Stop the machine, unplug and wind up hose and cable.
4. Place trigger gun (8), lance (10), nozzles (11-16) and other accessories in the holders of the machine.

Should the machine by mistake be frozen, it will be necessary to check it for damage.

**WARNING:** Never start up a frozen machine. Frost damages are not covered by the guarantee!

## ENVIRONMENTAL PROTECTION

Old appliances contain valuable materials that can be recycled. Please arrange for the proper recycling of old appliances. Please dispose your old appliances using appropriate collection systems.

## 8. MAINTENANCE, CLEANER AND REPAIR

**WARNING!** Always disconnect the electrical plug from the socket prior to maintenance or cleaning.

To ensure a long and problem free



working life, please take the following advice:

- Wash out water hose, high pressure hose, spray lance and accessories before mounting.
- Clean the connectors of dust and sand.
- Rinse the detergent spraying attachment after use.
- Clean the nozzles.

Any repair should always be made in an authorized workshop with original spare parts

### **Cleaning of inlet filter**

Clean the water inlet filter regularly once a month or more frequently according to use.

Carefully loosen the filter with a screwdriver and clean it (see section 5.3). Check that it is intact before re-mounting it.

The inlet filter must always be fitted inside the water inlet pipe to filter out sand, limestone and other impurities, as they will damage the pump valves.

**CAUTION:** Failure to fit the filter will invalidate the warranty

### **Cleaning of air vents**

The machine should be kept clean so as to let cooling air pass freely through the machine vents.

### **Greasing of couplings**

To ensure an easy connection and that o-rings do not dry up; the couplings should be greased regularly.

## TROUBLE SHOOTING

| Symptom                                  | Cause                                                    | Recommended action                                                                       |
|------------------------------------------|----------------------------------------------------------|------------------------------------------------------------------------------------------|
| Machine refuses to start                 | Machine not plugged in                                   | Plug in machine.                                                                         |
|                                          | Defective socket                                         | Try another socket.                                                                      |
|                                          | Fuse has blown                                           | Replace fuse. Switch off other machines.                                                 |
|                                          | Defective extension cable                                | Try without the extension cable.                                                         |
| Fluctuating pressure                     | Pump is sucking air                                      | Check that hoses and connections are airtight.                                           |
|                                          | Valves dirty, worn out or stuck                          | Contact your nearest service centre.                                                     |
|                                          | Water supply not sufficient                              | Increase water pressure, check for blockage of garden hose and/or change to bigger hose. |
|                                          | Pump seals worn                                          | Contact your nearest service centre.                                                     |
| Machine stops                            | Fuse has blown                                           | Replace fuse. Switch off other machines.                                                 |
|                                          | Incorrect mains voltage                                  | Check that the mains voltage corresponds to specification on the name plate.             |
|                                          | Thermal sensor activated                                 | Leave the machine for 5 minutes to cool down.                                            |
|                                          | Nozzle partially blocked                                 | Clean the nozzle with a needle and by spraying water backwards through the nozzle.       |
| Fuse blows                               | Fuse too small                                           | Change to an installation higher than the amperage consumption of the machine.           |
|                                          | Amperage increase                                        | Try without the extension cable.                                                         |
| Machine pulsating                        | Air in inlet hose/pump                                   | Allow machine to run with open trigger until regular working pressure resumes.           |
|                                          | Inadequate supply of mains water specifications required | Increase water pressure, check for blockage of garden hose and/or change to bigger hose. |
|                                          | Nozzle partially blocked                                 | Clean the nozzle with a needle and by spraying water backwards through the nozzle.       |
|                                          | Water filter blocked                                     | Clean the filter.                                                                        |
|                                          | Hose kinked                                              | Straighten out hose.                                                                     |
| Machine often starts and stops by itself | Pump and/or trigger gun is leaking                       | Contact your nearest service centre.                                                     |
|                                          | No water supply                                          | Connect inlet water.                                                                     |
| Machine starts but no water comes out    | Water filter blocked                                     | Clean the filter.                                                                        |
|                                          | Nozzle blocked                                           | Clean the nozzle with a needle and by spraying water backwards through the nozzle.       |

## WEEE - WASTE OF ELECTRIC AND ELECTRONIC EQUIPMENT



The symbol on the product or on its packing indicates that this product may not be treated as household waste. Instead it shall be handed over to the applicable collection point for the recycling of electrical and electronic equipment. By ensuring this product is disposed of correctly, you will help prevent potential negative consequences for the environment and human health, which could otherwise be caused by inappropriate waste handling of this product. For more detailed information about recycling of this product, please contact your local city office, your household waste disposal service or the shop where you purchased the product.

## WARRANTY

- This product is warranted for a 12 months period effective from the date of purchase by the first user.
- Damage and/or defects resulting from inappropriate use do not fall under the warranty provisions.
- We also disclaim all liability for any bodily injury resulting from inappropriate use of the tool.
- At the same time, no claim can be made on the warranty if the damage of the device is the result of negligent maintenance or overload.
- Definitely excluded from the warranty is damage resulting from fluid permeation, excessive dust penetration, intentional damage (on purpose or by gross carelessness), inappropriate usage (use for purposes for which the device is not suitable), incompetent usage (e.g. not following the instructions given in the manual), inexpert assembly, lightning strike, erroneous net voltage. This list is not exhaustive.
- Acceptance of claims under warranty can never lead to the prolongation of the warranty period nor commencement of a new warranty period in case of a device replacement.
- We reserve the right to reject a claim whenever the purchase cannot be verified or when it is clear that the product has not been properly maintained (Clean ventilation slots, carbon brushes serviced regularly, etc.).
- Any transportation costs shall always be borne by the customer, unless agreed otherwise in writing.
- You can always obtain more information by the email [realminfo@yahoo.com](mailto:realminfo@yahoo.com) or at the number **888-899-1688**.

**USA Office:**

101 wales avenue, Avon, MA 02322, United States

**Service Hot line:** 888-899-1688

**Email:** [realminfo@yahoo.com](mailto:realminfo@yahoo.com)