

12x12 Transom Top Installation Instructions

Step 1

Attach the Transom Top to the shutter by using the clips provided. Align the shutter and the Transom Top on a flat surface. Join them together by pushing each clip on as far as it will go. Use 2 clips per Transom Top. See Figure 1 at right for clip placement.

Step 2

Fasten the shutter to the wall using the instructions supplied with the shutter.

Step 3

Fastening the Transom Top to the wall is just like fastening the shutter. With the shutter in location against the wall, drill through the Transom Top and wall a total of 3 1/4" with a 1/4" drill bit. See Figure 2 at right for proper Shutter Lok location.

Step 4

Grasp the Shutter-Lok by supporting the shank, and push it through the shutter hole and into the wall surface. Tap the Shutter Lok gently with a hammer to snug the shutter against the siding. Do not over tighten, or this will cause the shutter to dimple.

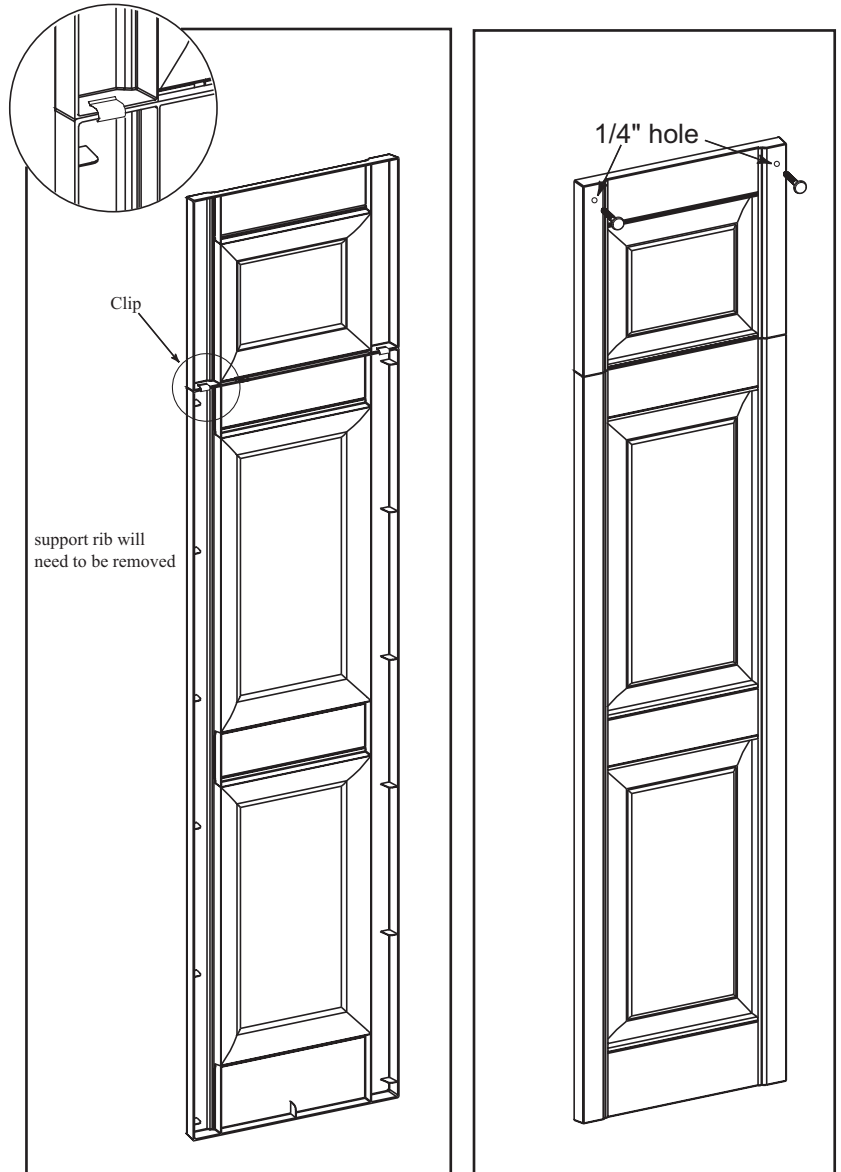


Fig. 1 (back of assembly)

Fig. 2 (front of assembly)