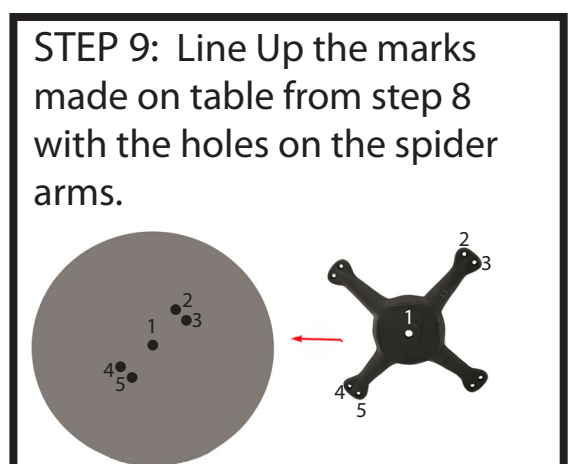
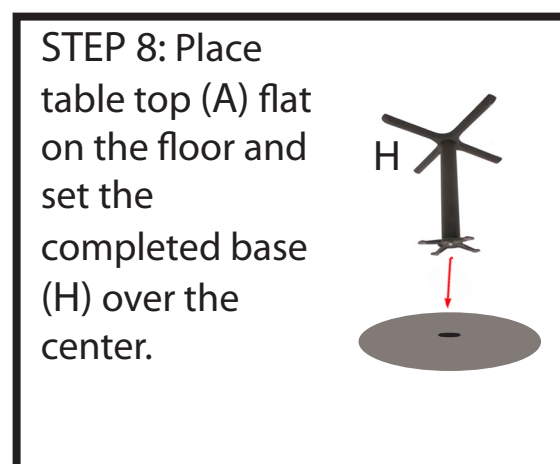
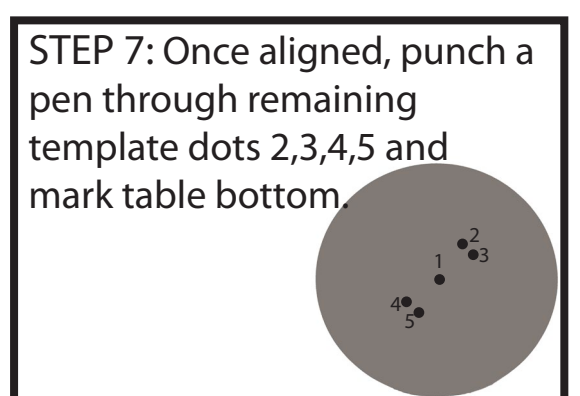
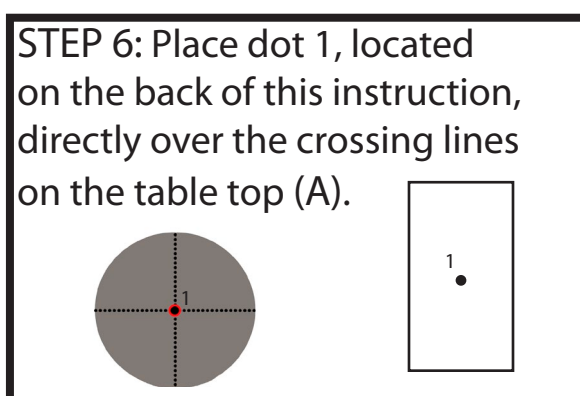
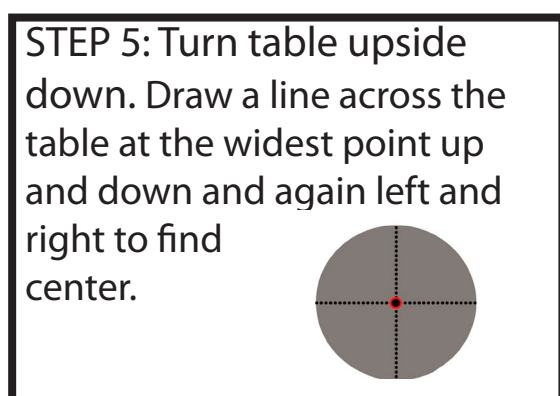
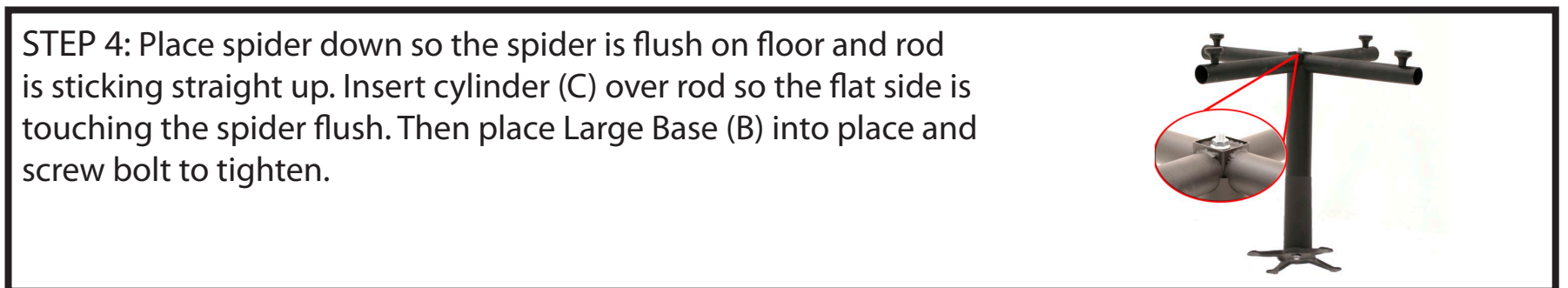
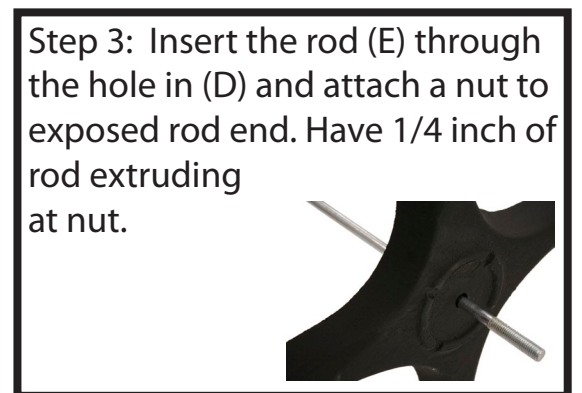
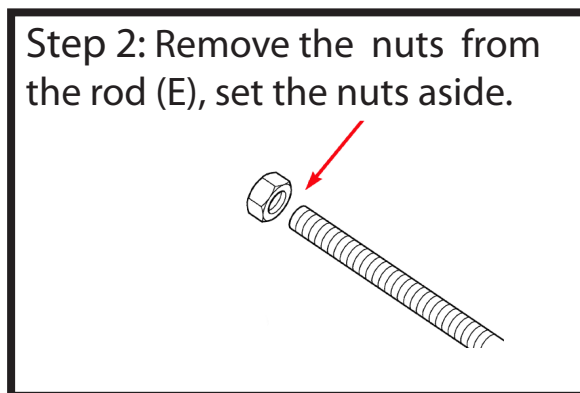
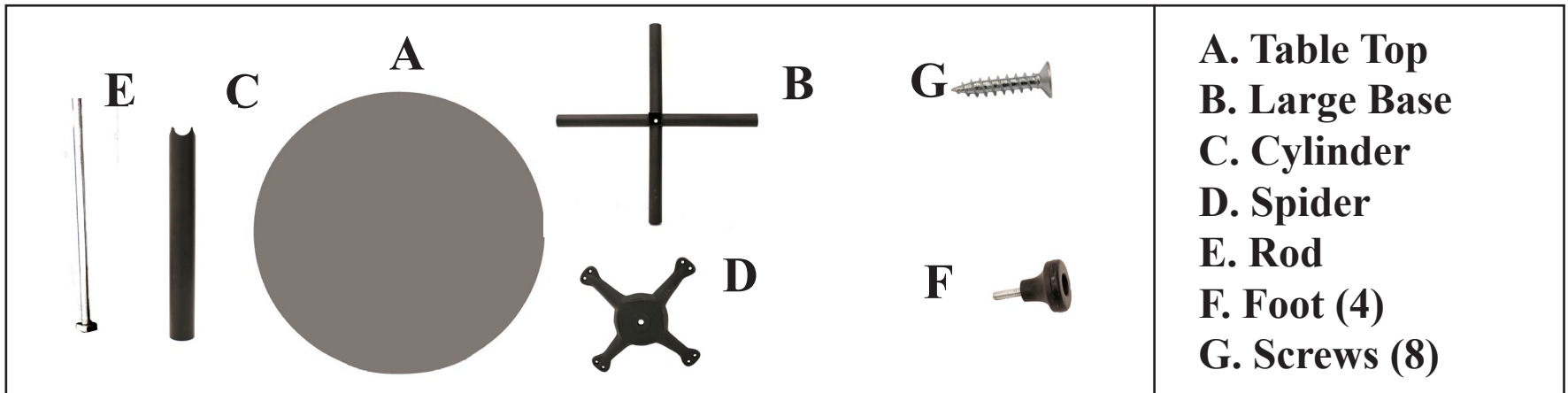




Round Table Top • INSTRUCTIONS

(MKTBX22, MKTBX30, MKTBX36, TTRD30, TTRD36, TTRD42, TTRD48)

Organize your parts. You will need a drill, pencil and crescent wrench. Two people are required for assembly.



IMPORTANT NOTICE

Place all wooden parts on a clean and smooth surface such as a rug or carpet to avoid the parts from being scratched.
Check to be sure that you have a ll parts and hardware.
Remove all wrapping materials, including staples & packing straps before you start to assemble.
Do not tighten all screws/bolts until completely assembled.
Keep all hardware parts out of reach of children.

Any problems or questions please call Regency Office Furniture at 1-866-816-9822

-The Outside dots are for 48" Table tops and MKTBX 36 X-Bases.

-The Inside dots are for 30", 36" and 42" Table tops and MKTBX 22 & 30 X-Bases.

