

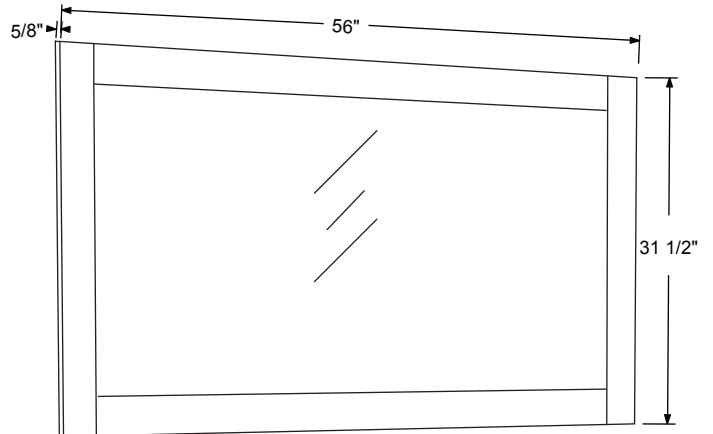
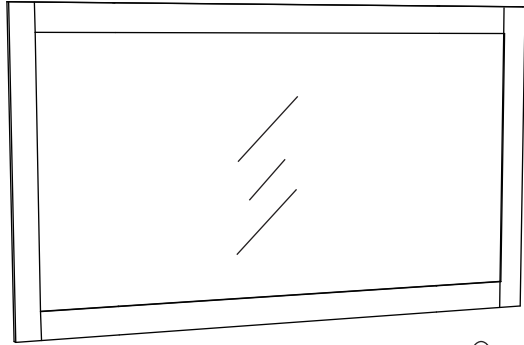


**WS2260**

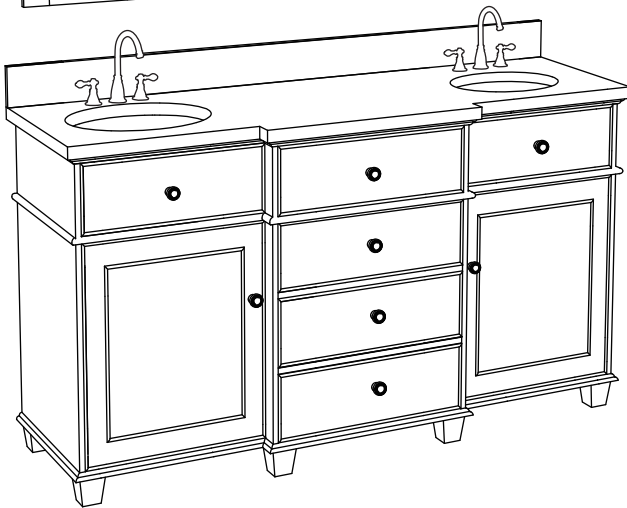
**INSTALLATION GUIDE**



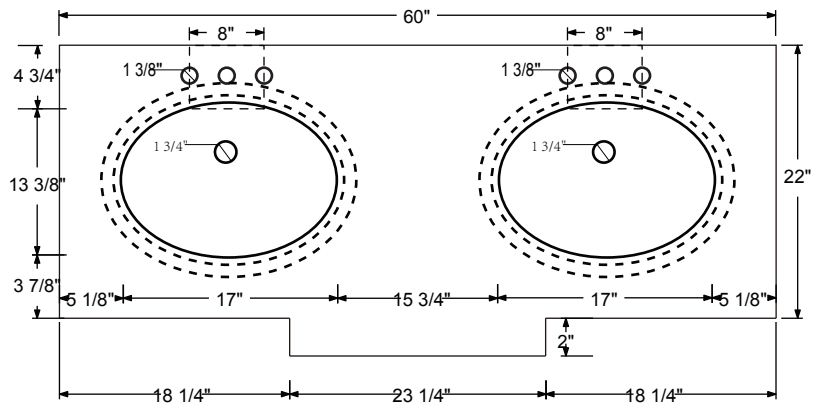
**LEGION FURNITURE**



Mirror



Vanity Ensemble



Sink

*Note: All dimensions and specifications are approximate and subject to change without notice.*



**LEGION FURNITURE**

**WS2260**

**INSTALLATION GUIDE**

PAGE 1



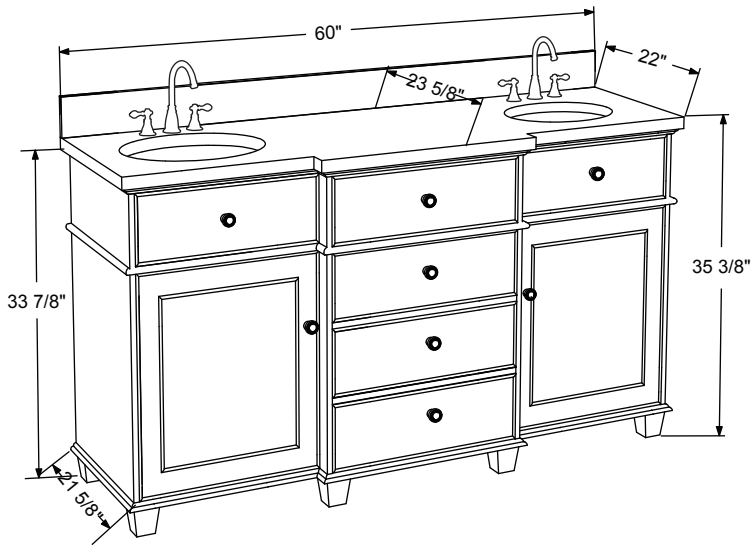
**WS2260**

**INSTALLATION GUIDE**

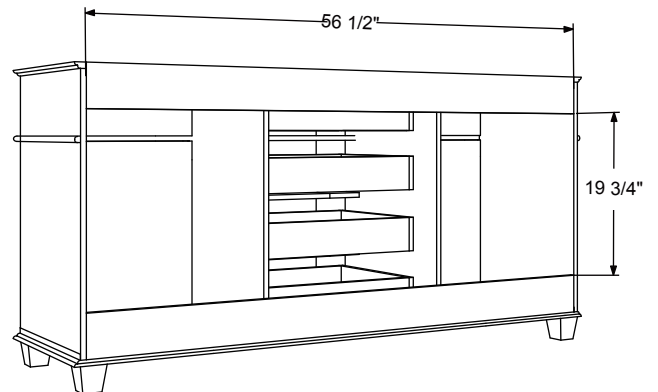


**LEGION FURNITURE**

Vanity Front



Vanity Back



**LEGION FURNITURE**

**WS2260**

**INSTALLATION GUIDE**

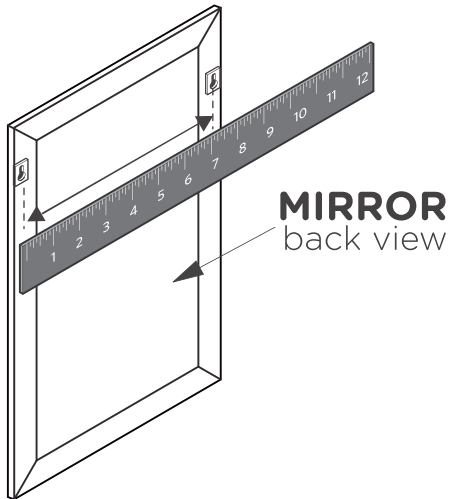
PAGE 2

# MIRROR INSTALLATION INSTRUCTION

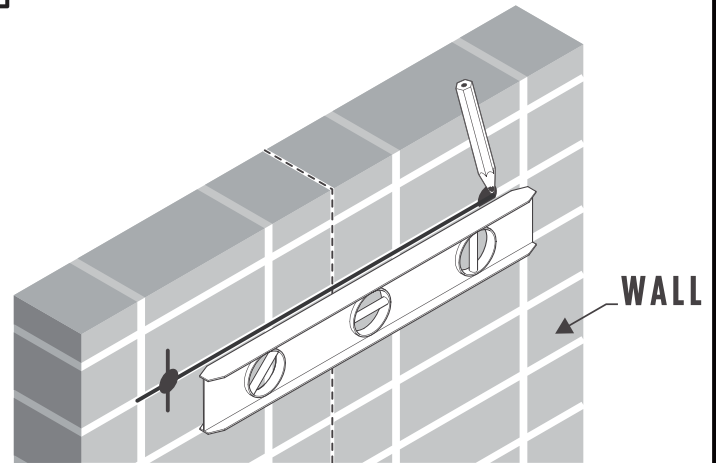
## TOOLS FOR ASSEMBLY



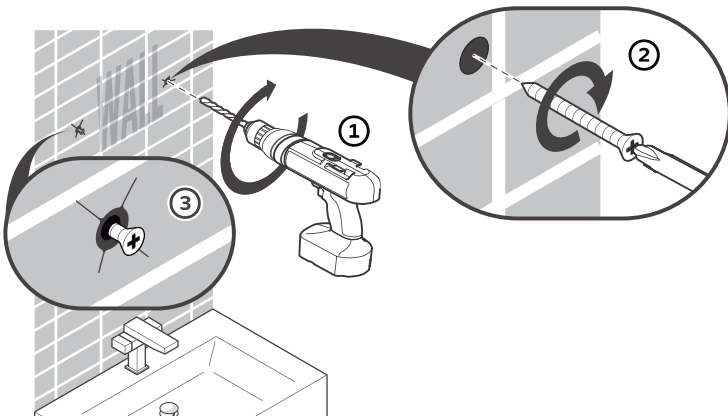
- 1 Measure the distance between the brackets on the back of the mirror



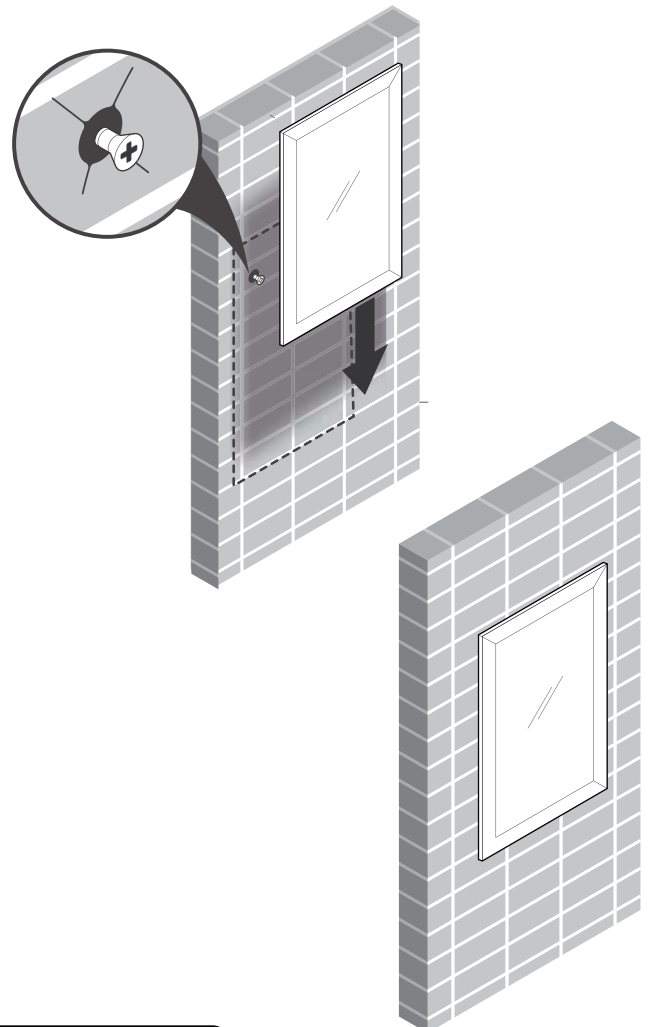
- 2 Mark the measured distance on the wall using a level



- 3 Once position is marked, drill 2 holes and insert anchors if stud is not available



- 4 Hang mirror on the wall



### IMPORTANT:

CONSULT AN EXPERT FOR THE PROPER SCREWS/BOLTS TO USE WHEN ATTACHING TO VARIOUS WALL CONSTRUCTIONS. SCREWS PROVIDED **DO NOT** ATTACH TO ALL WALL CONSTRUCTION TYPES.



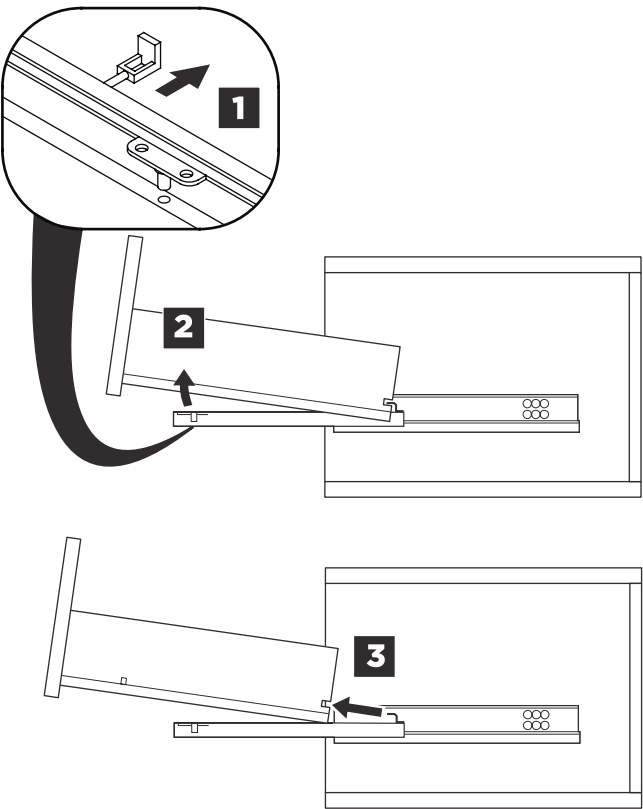
LEGION FURNITURE

WS2260

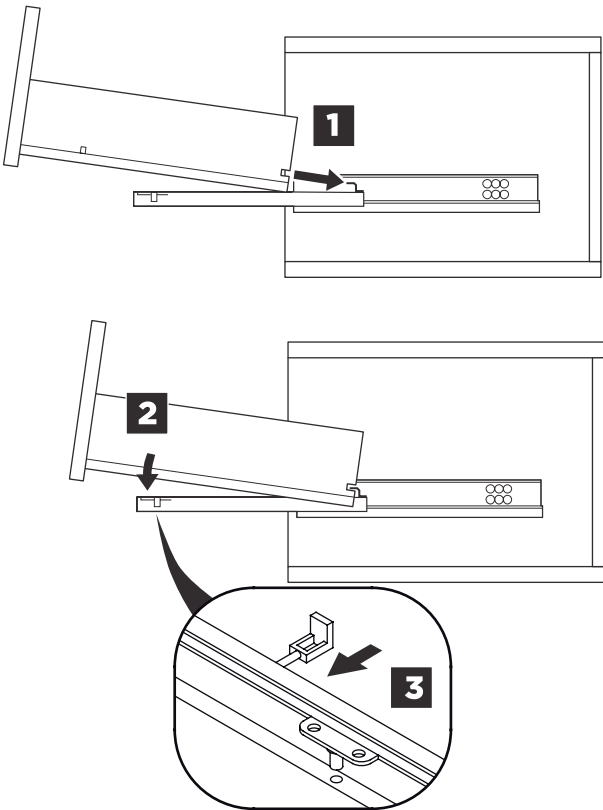
INSTALLATION GUIDE

PAGE 3

DRAWER REMOVAL

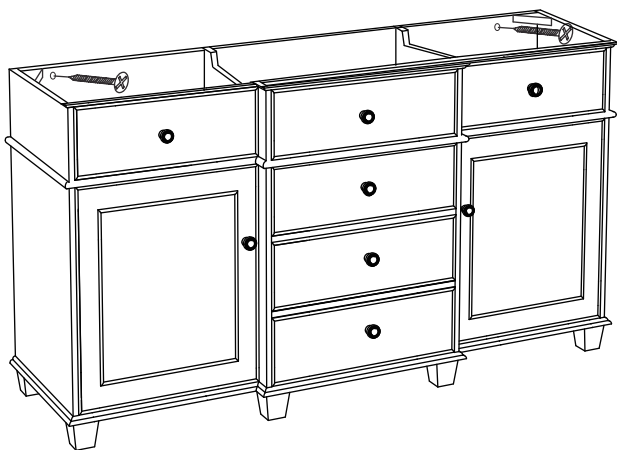


DRAWER INSTALLATION

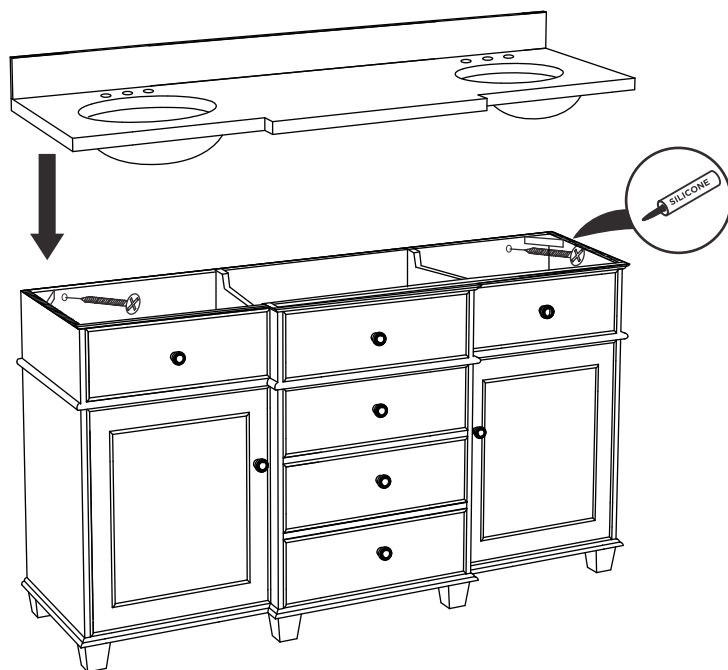


## INSTALLATION INSTRUCTIONS

- 1** Secure cabinet to the wall



- 2** Apply a bead of silicone on the top of the cabinet and place the sink on top



**IMPORTANT:**

Consult an expert for the proper screws/bolts to use when attaching to various wall constructions. Screws provided do not attach to all wall construction types.



LEGION FURNITURE

**WS2260**

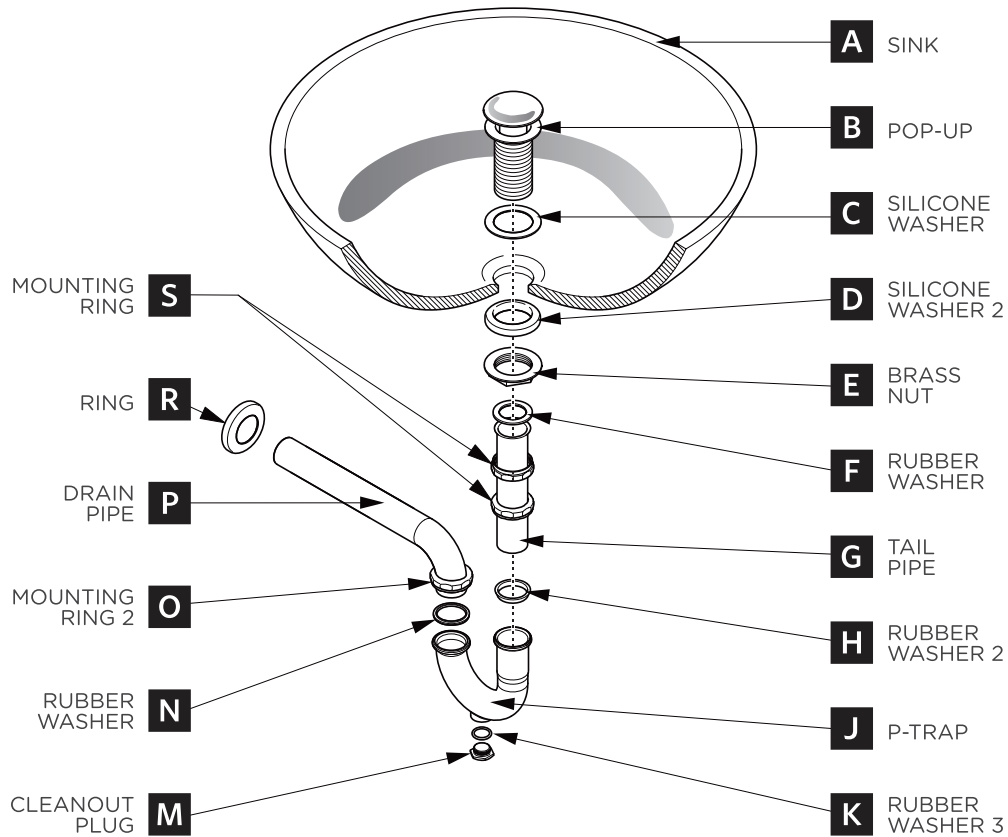
**INSTALLATION GUIDE**

PAGE 5

## P-TRAP & POP-UP

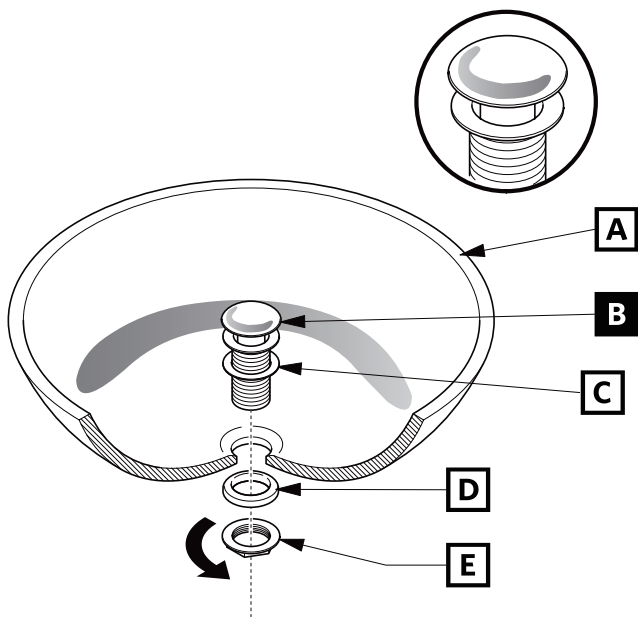
### INSTALLATION INSTRUCTIONS

Your item may appear slightly different from the illustration.



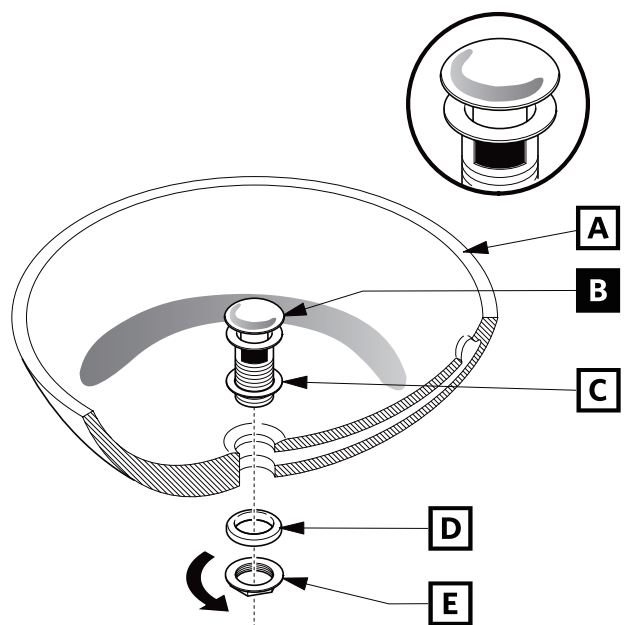
### POP-UP INSTALLATION

#### FOR SINKS WITHOUT OVERFLOW



OR

#### FOR SINKS WITH OVERFLOW



LEGION FURNITURE

WS2260

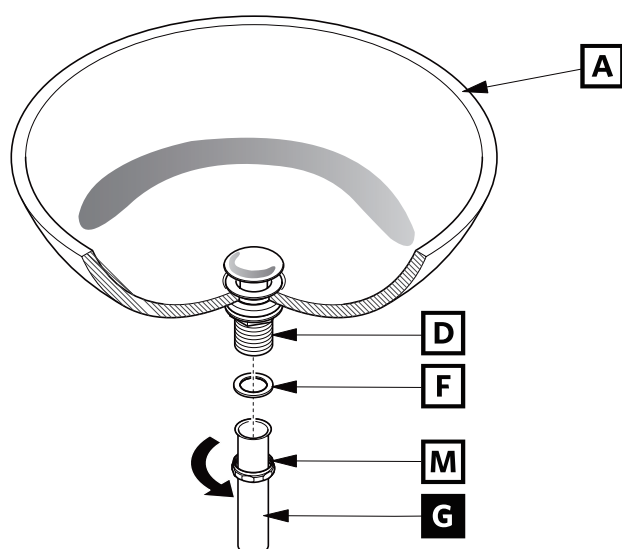
INSTALLATION GUIDE

PAGE 6

## P-TRAP INSTALLATION

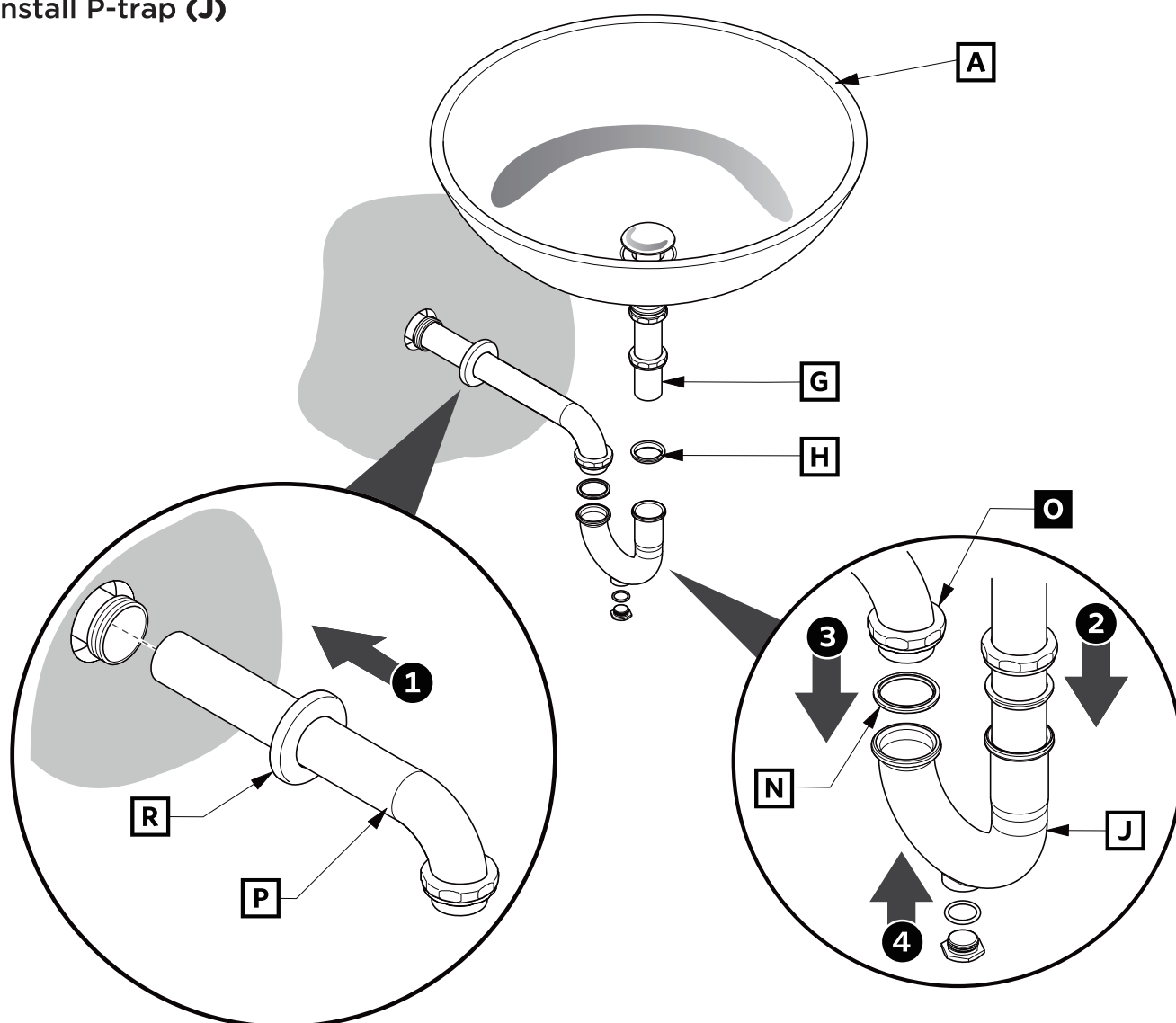
1

### Install tail pipe (G)



2

## Install P-trap (J)



LEGION FURNITURE

WS2260

## INSTALLATION GUIDE

PAGE 7