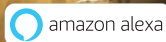
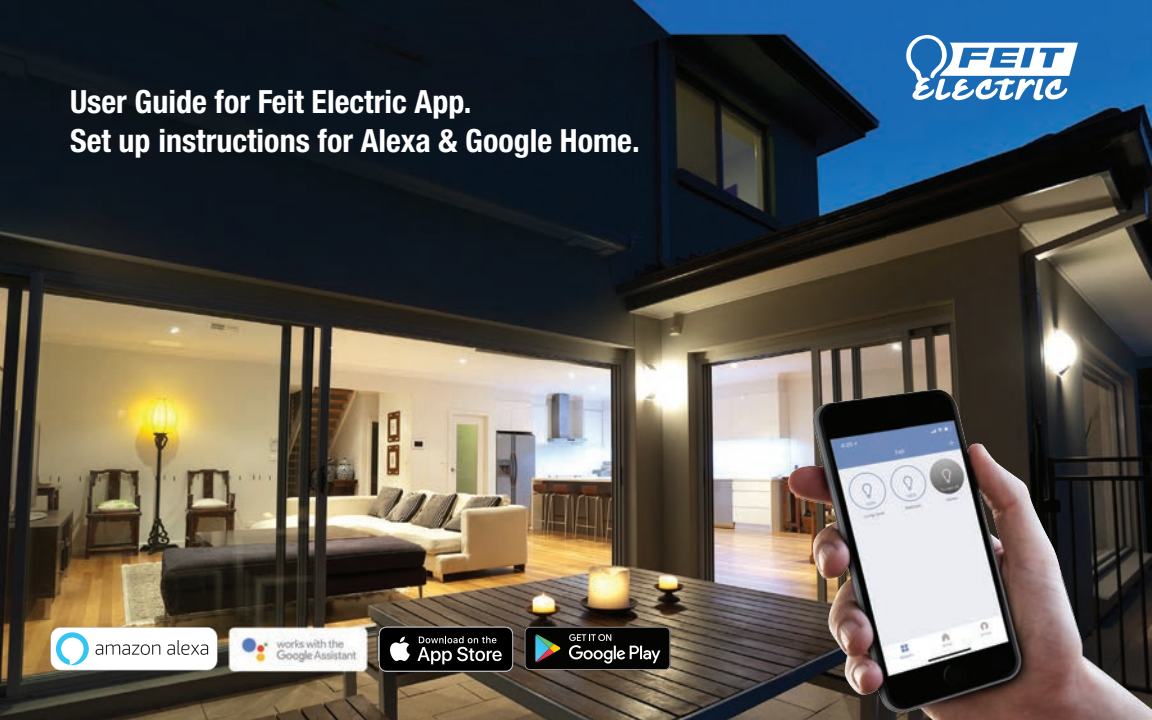




User Guide for Feit Electric App. Set up instructions for Alexa & Google Home.



1

Getting Started



Download on the
App Store

GET IT ON
Google Play

Download the Feit Electric App from the
Apple App StoreSM or
Android Google PlayTM store.

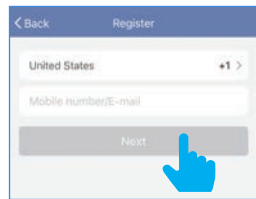
2

Launch the App and tap **“Register”**
for new accounts or **“Login”**
for existing accounts.



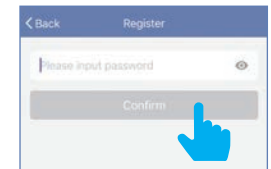
3

Enter Mobile Number or E-Mail address,
then tap **“Next”**.
(A verification code will be sent to your
device if using a Mobile Number.)



4

Create a Password then tap **“Confirm”**.

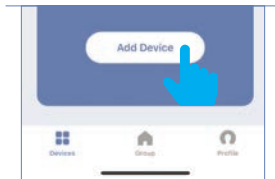


Adding Devices

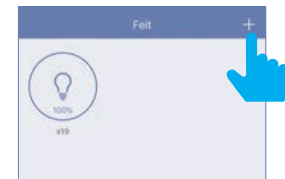


5

Install & power On bulb(s)
then tap **“Add Device”**.

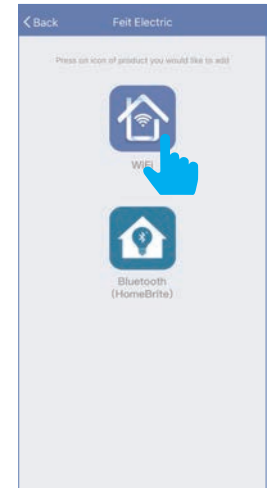


To add additional devices
tap the **plus (+)** sign in the upper
right hand corner under Devices.



6

Make sure you are connected to
a **2.4GHz WiFi Network** then tap on
the **“Feit Electric WiFi Icon”**.



7

Power On the bulb(s) and confirm the light(s) is blinking. Then tap **“Confirm that the light blinks rapidly”**.

Note: If the bulbs are not blinking, turn bulbs ON-OFF-ON-OFF-ON.



8

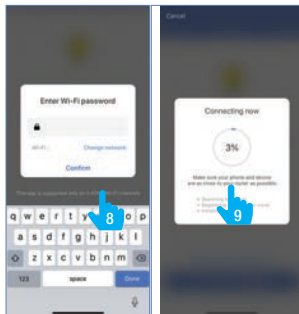
Choose a 2.4GHz WiFi network and enter the WiFi password, then tap **“Confirm”**

Note: Only works with 2.4GHz WiFi networks.

9

The status window will appear once the device(s) have successfully connected and the 3 bullets on the bottom will turn green.

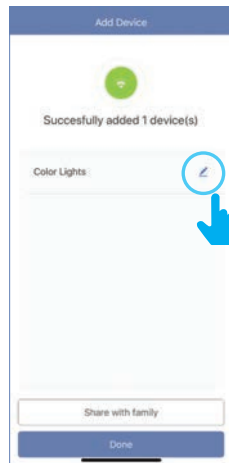
Note: If unsuccessful, the **“Failed to Add”** screen will appear. Close the App and repeat the previous steps.



10

To rename the bulb(s), tap the **“Pen”** icon, enter the new name and tap **“Done”**. The bulb(s) are now ready to be controlled with the Feit Electric App.

Note: Constant power to the bulb(s) is required at all times.



Features



Dimmable



Tunable White



Color Changing



Schedule

Individual Bulb On/Off

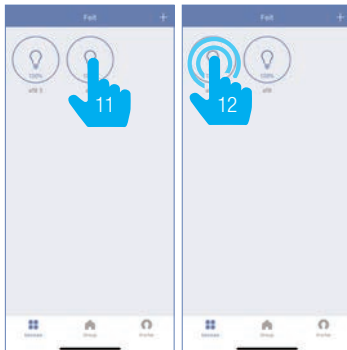
11

Tap the bulb icon to turn the bulb On/Off.

12

Individual Bulb Setting

Press and hold the icon for 2 seconds for bulb settings.

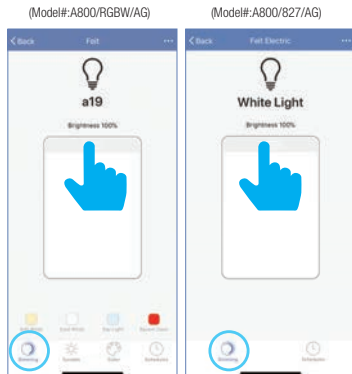


Dimming

13

Slide the dimming bar up or down to set the brightness level.

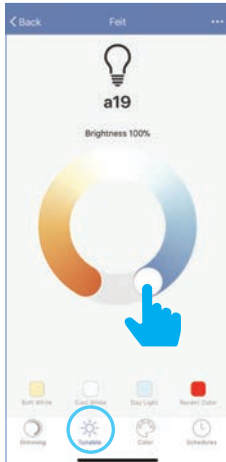
Select a preset color temperature or the last color used.



Tunable White

14

Use the round slider to adjust color temperatures from Warm (2700K) to Cool (6500K).



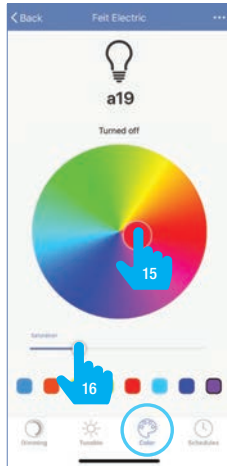
Color Changing

15

Tap on any part of the color picker to select a desired color or choose a preset color.

16

Use the slide bar to adjust the color saturation.



Schedule

17

Tap on "Schedule"



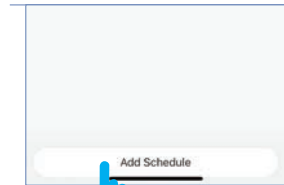
(Model#:A800/RGBW/AG)



(Model#:A800/827/AG)

18

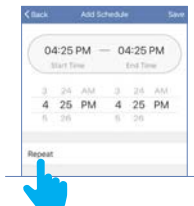
Tap "Add Schedule".



19

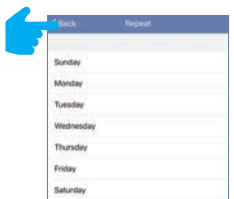
Choose a Start Time (On) and End Time (Off).

To repeat on certain days of the week tap **“Repeat”**, otherwise the schedule will only occur once.



20

Tap on the day(s) of the week you would like the schedule to repeat. Then tap **“Back”** then **“Save”**.



Additional Features



Modify Device Name



Device Sharing



Use Echo or Google Home



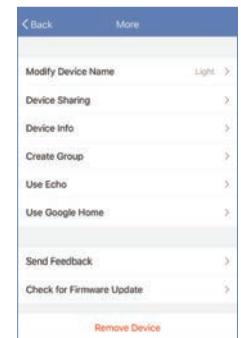
Grouping



Remove Devices

21

Additional features are available in the bulb settings context menu, including renaming and removing devices. Tap the context menu in the upper right corner (•••).



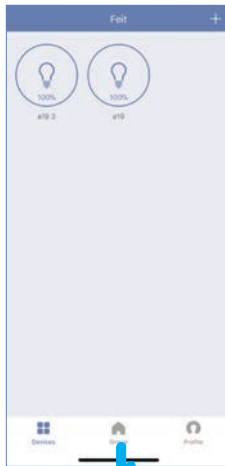
Creating Groups



22

To create groups, tap on the “Group” icon at the bottom of the App.

Note: To create groups you will need at least 2 bulbs.



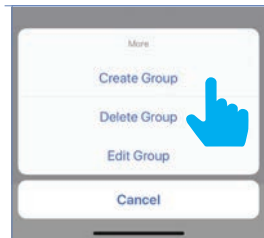
23

Tap the context menu in the upper right corner (•••).



24

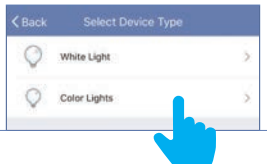
Tap on “Create Group”.



25

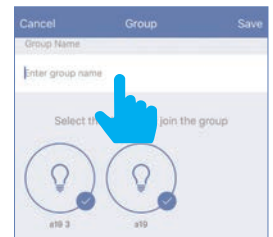
Tap **“White Light”** for soft white bulbs. Tap **“Color Lights”** for Color Changing/Tunable bulbs.

Note: You can only group like bulbs



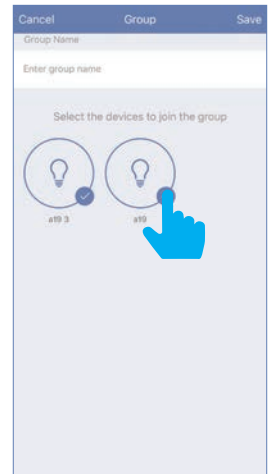
26

Tap the group name and enter the name of the group.



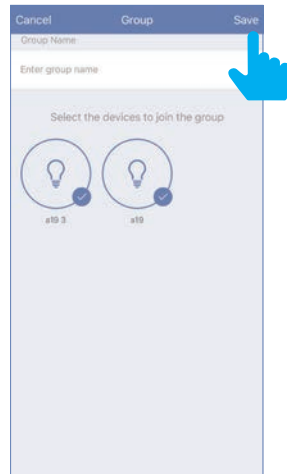
27

Then select the bulbs you want in the group.



28

Once the group is named and the bulbs are selected, tap **“Save”**.



Edit Groups



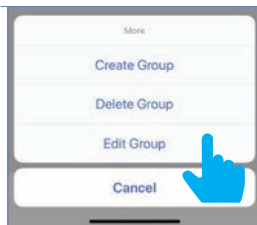
29 Tap the **“Group”** icon.



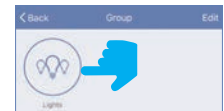
30 Tap the context menu in the upper right corner (•••).



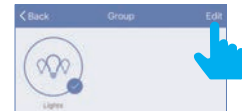
31 Tap **“Edit Group”**.



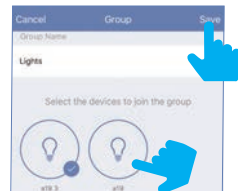
32 Select the group you would like to edit.



33 Once selected, tap **“Edit”** in the upper right hand corner.



34 Rename the group by tapping on the name or remove a bulb by tapping to deselect bulb(s). Tap **“Save”** once completed.



Delete Groups



35

Tap the **“Group”** icon.



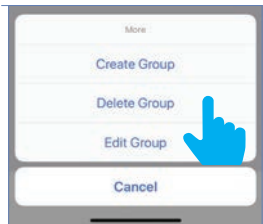
36

Tap the context menu in the upper right corner (•••).



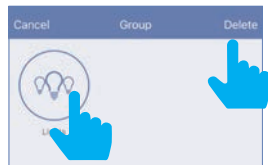
37

Tap **“Delete Group”**.



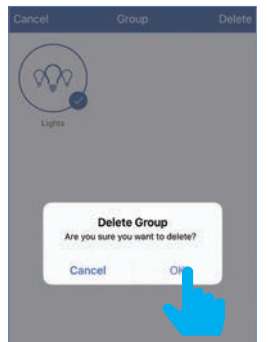
38

Select the group you would like to delete. Once selected, tap **“Delete”** in the upper right corner.



39

Tap **“OK”** to confirm.

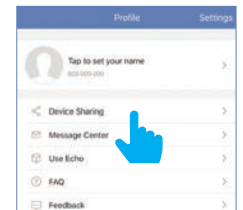
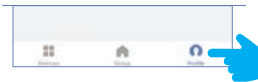


Device Sharing



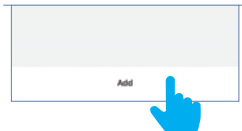
40

To share device(s) tap on the “**Profile**” icon and then tap on “**Device Sharing**”.



41

Tap “**Add**”.



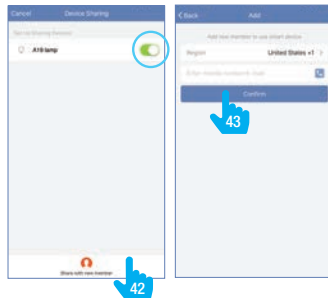
42

Select the device that you wish to share.
Tap “**Share with new member**”.

43

Enter the new member's
mobile number or email address
then tap “**Confirm**”.

Note: New members must set up an
account before sharing is possible.





feit.com/smartwifibulb