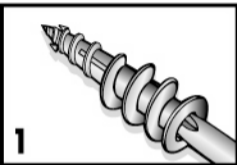
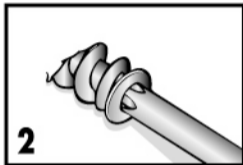


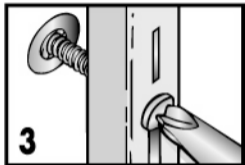
# ***Stud Solver Installation***



**Using #2 Phillips,  
press tip of E-Z Anchor<sup>®</sup>  
into drywall.**



**Press firmly and turn  
clockwise until seated  
flush. If resistance is felt  
due to stud, increase  
pressure and continue  
turning.**



**Place fixture  
(max. 3/4" thick)  
over E-Z Anchor<sup>®</sup>,  
insert screw and fasten.**