

# SANIBEST® Pro Grinder

## CONNECTIONS



TOILET



SINK



SHOWER



BATHTUB



LAUNDRY  
SINK



WASHING  
MACHINE

## APPLICATIONS



RESIDENTIAL

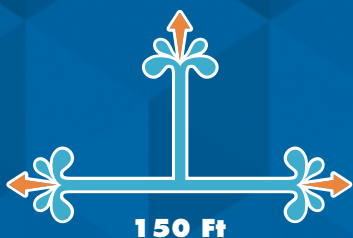


COMMERCIAL



## PUMPING DISTANCE

25 Ft



150 Ft



### INSTALLATION BEHIND THE TOILET



Example of installation. Follow local plumbing codes for actual install.

### INSTALLATION BEHIND THE WALL



Example of installation. Follow local plumbing codes for actual install.

The **Sanibest Pro** is a **1 HP pump system** used to install a complete bathroom **up to 25 feet below the sewer line, or even up to 150 feet away** from a soil stack. It incorporates a **grinder system** which is ideal for uncontrolled environments in both residential and commercial applications (ie. rental unit, offices, warehouses, etc). The Sanibest Pro is designed to **handle sanitary products** that may have been flushed down the toilet; such may consist of condoms, sanitary napkins, q-tips, dental floss, etc.

- **Discharges the waste through a 3/4" or 1" rigid pipe. A non-return valve is included** on the discharge elbow assembly provided with the system. This elbow can be rotated 360 degrees depending on the discharge installation.
- Has been designed with a **1-1/2" vent connection** on the top of the lid. All plumbing codes require connection to a vent system. Please note that the vent system should be a two-way air vent as air needs to freely flow both ways. Note: The use of mechanical vents, air admittance valves or similar devices is not permitted.
- Must be connected to **Saniflo's 1.28 GPF / 4.8 LPF rear discharge toilet**. These toilets come in round and elongated (ADA compliant) models. More technical information on page 6.
- Will also discharge gray water from any **sink, bath/shower, urinal and even a washing machine** (indirect connection). The wastewater will drain into the system via **two 2" inlets with built-in check valves** on either side of the housing. Note that when adding a bathtub/shower, the base should be raised up by a minimum of 8" off the floor.
- An **easy access service panel** is located on top of the pump. This will give you easy access to the electrical components such as the capacitor, microswitch, electronic board and membrane. For a full list of parts, please refer to the next page.



#### Toilet Tank

(Part N° 005)

Insulated 1.28 GPF / 4.8 LPF toilet tank equipped with all internal valves. For more information, please turn to page 6.

#### Round/Elongated Bowl

(Part N° 083 or 087)

Rear discharge toilet with 16 3/4" seating height (Elongated bowl is ADA compliant). For more information, please turn to page 6.

#### Extension Pipe

(Part N° 030)

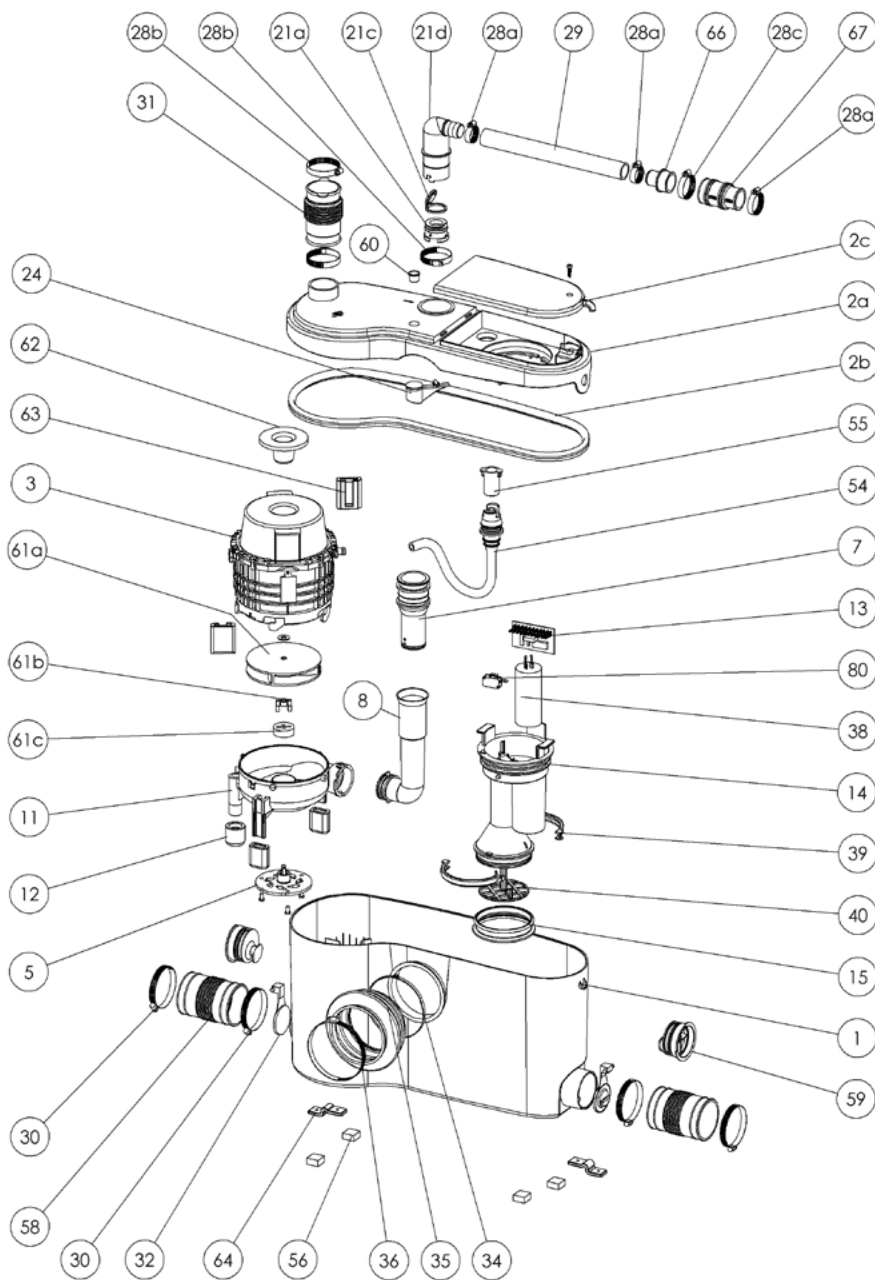
18" long PVC pipe with internal gasket used to hide the pump behind the wall. For more information, please turn to page 51.

#### Sanibest Pro

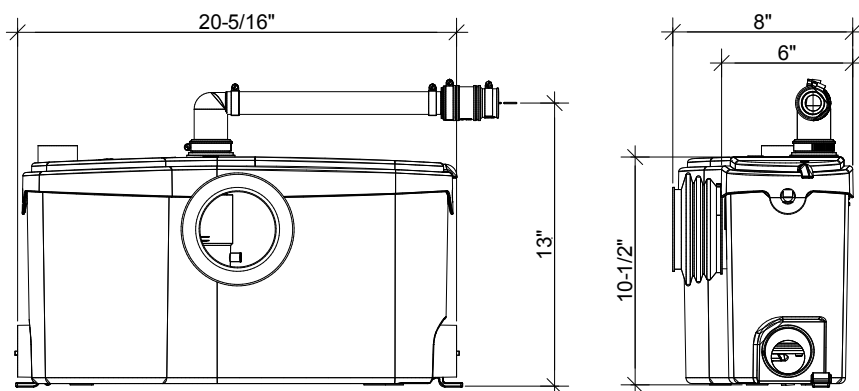
(Part N° 013)

1 HP grinder pump for commercial applications that is able to handle the accidental flushing of sanitary napkins from full bathroom applications.

**PLEASE CALL US TOLL-FREE AT  
800-571-8191 (US) / 800-363-5874 (CDN)  
TO PURCHASE PARTS REFERENCED BELOW**



## DIMENSIONAL DRAWINGS



**Choose any shower, bathtub or sink and enjoy  
your dream bathroom.**

## TECHNICAL SPECIFICATIONS

### Pump type:

Grinder

### Electrical:

120 V – 60 Hz / 9 Amps (Max)

### Motor:

1 HP oil-filled thermally protected motor

### Capacitor rating:

60 microfarad

### Operating Temperature:

104°F (110°F Max.)

### Power cord length:

49 inches

### Noise level:

≤ 63 dBA (Lp) (measured at 3 ft.)

### Discharge pipe diameter:

3/4" or 1"

### Discharge rate at 25 ft:

19 GPM

### Discharge rate at 3 ft:

38 GPM

### Shut-off head:

38 ft.

### Normal running time:

10-12 seconds

### Capacity:

3.2 gallons / 12.1 liters

### Inlets:

2" (side), 1-1/2" vent (top)

### Method of activation:

Membrane/microswitch

### Shower/bathtub base height:

8" min

### Weight:

28 lbs / 12.7 kg

### Certifying agencies:

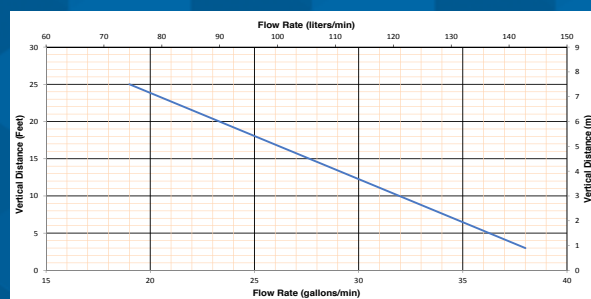
CSA (IPC, NSPC), IAPMO (UPC)

### Recommended accessories:

Descaler, Sanialarm

### Connections:

Rear outlet toilet, sink, shower/bathtub, washing machine (indirect connection via laundry sink)





# SANIFLUSH TWO-PIECE ROUND TOILET SYSTEM

**Close-Couple Toilet – 1.28 GPF (4.8 Liter Flush)**

## **SANIFLUSH 083 & 005**

### ✓ **083 Round Bowl**

- Vitreous china
- Integral P-trap and a rear outlet spigot
- Seating height: 16 ¾" (without seat)
- Large 3" trapway
- Wash down style toilet
- Low flush toilet; it uses 1.28 gallons (4.8 L) per flush
- Toilet supplied with a set of lag screws, plastic anchors and china protectors
- Water spot measures 4 ½" x 3 ¾"
- 1 Year limited warranty

### ✓ **005 Toilet Tank**

- Vitreous china
- Insulated tank to prevent condensation
- The zero re-fill fill valve is easily adjustable
- The flush valve has a silicone flapper seal
- Tank is not designed to be used with refill hose thus not provided.
- Water level mark applied to the overflow tube
- Toilet tank supplied with bowl screws, washers and wing nuts
- 1 year limited warranty
- Warranty for fill and flush valve as per manufacturer

### **Nominal Dimensions**

31" x 17-3/4" x 27"  
(787mm x 451mm x 686mm)

### **Fixture Dimensions and Hydraulic Performance - Meets or Exceeds the Following Specifications**

- ANSI/ASME A112.19.2M and CAN/CSA B45 Requirements
- IAPMO/UPC Certificate of Listing
- EPA WaterSense labeled

### **Notes**

- Available in white only
- Includes soft-close toilet seat along with mounting hardware kit Part# SEATROUND
- Replacement fill valve recommended – Fluidmaster 400A or equal (not supplied)



*Round Bowl with Tank (083 & 005)*

### **Care & Cleaning**

- When cleaning toilet, wash it with mild soapy water or liquid cleaners that are not chlorine or bleach based. Avoid using harsh detergents.
- We do not recommend the use of in-tank cleansers. Products containing chlorine can cause damage to components inside the tank and cause them to fail prematurely.





## SANIFLUSH TWO-PIECE ROUND TOILET SYSTEM

Close-Couple Toilet – 1.28 GPF (4.8 Liter Flush)

**SANIFLUSH 083 & 005**

### Drawings and Dimensions

