

# ONDUVILLA®

The New Design In Shingles

Product Fact Sheet for

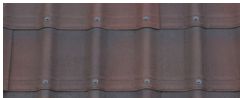


## WHAT IS ONDUVILLA?

A unique 3D shingle roofing system that offers a cost-effective, lightweight alternative to a tile roof.

## WHAT IS THE ONDUVILLA PRODUCT LINE?

**STOCK COLORS:**



SIENA BROWN



TUSCANY RED



EBONY BLACK

**SOS COLORS:**



SLATE GREY



FOREST GREEN 3D



TERRA COTTA 3D



CLASSIC RED 3D



SHINGLES

42" X 16", 1.6" wave height,  
3.33 ft.<sup>2</sup> coverage, 2.8 lbs.



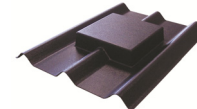
FASTENERS

3" or 4" galvanized, ring-shanked, neoprene washer, color coordinated



CLOSURE STRIPS

38" solid or vented (2 tops/2 bottoms; pack of 4)



MOULDED PIPE FLASHING

25" x 19-1/2"



ONDUBAND PRO

6" x 32'



SLIM CAP

41-1/2" X 7"



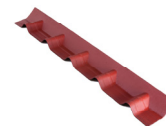
VERGE PIECE

42" X 4-1/2"



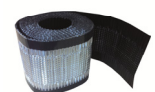
CLOSURE CAP

42" X 7"



APRON PIECE

40-1/2" X 5-1/2"



ONDULAIR SLIM

6" X 16'

# WHY ONDUVILLA?

- Lifetime Limited Warranty—Resists corrosion and cracking
- Dramatically improves your home’s appearance
- Distinctive design that looks like expensive European tile but costs much less
- Can be applied over existing shingles
- High wind resistance
- Will not rust or corrode
- Eco-responsible—manufactured with 50% post-consumer recycled material
- Lightweight and easy to cut and install

## INSTALLATION TIPS

<b>SLOPE</b>	Recommended—3:12; Minimum—2:12
<b>STRUCTURE</b>	Most standard roof structures; apply over solid decking or up to 2 layers of shingles
<b>CUTTING</b>	Across corrugation—circular saw with carbide bit; Parallel to corrugation—utility knife
<b>OVERLAP (SHINGLE)</b>	3-1/2” —follow the overlapping guides that are in place on shingles
<b>OVERLAP (SLIM CAP, CLOSURE CAP, APRON PIECE &amp; VERGE PIECE)</b>	Slim Cap, Closure Cap, Verge Piece—3”; Apron Piece—1-1/2”
<b>HIPS</b>	Seal with fillers cut from closure strips or Ondulair Slim; apply Slim Cap
<b>VALLEYS</b>	Apply a minimum of 28” of ice/water shield. Apply 20” wide metal flashing. Apply strips of OSB on each side of flashing. Cut shingle to fit valley; push fillers cut from closure strips into each corrugation

## ESTIMATING GUIDE

<b>SHINGLES</b>	3 bundles/square
<b>FASTENERS (SHINGLES)</b>	5 fasteners per shingle (1 box of fasteners per bundle) (plus 5 roofing nails [installed in the valley] per shingle for high wind areas)
<b>FASTENERS (SLIM CAP, CLOSURE CAP, APRON PIECE &amp; VERGE PIECE)</b>	Slim Cap, Closure Cap—10; Verge Piece—6; Apron Piece—5
<b>SLIM CAP, CLOSURE CAP, APRON PIECE &amp; VERGE PIECE</b>	Closure Cap, Apron Piece, Verge Piece—39” coverage after overlap; Slim Cap—38-1/2” after overlap
<b>CLOSURE STRIPS</b>	Length of eaves, plus 2x the length of hips, ridges and valleys, divided by 38 = number of closures needed



**QUESTIONS? Please call 800-777-7663**  
(Monday-Friday, 8 a.m.-5 p.m. EST)

**ONDUVILLA®**

The New Design In Shingles

4900 Ondura Drive, Fredericksburg, VA 22407

Fax: 540-898-4991

[www.onduvilla-usa.com](http://www.onduvilla-usa.com)