

CL&D TECHNICAL SPECIFICATIONS • ROLLED FILM LEGEND			
<b>ROLLED FILM TEMPLATE</b> CUSTOMER: RUST-OLEUM SIZE: (604 x 211) 8.625 X 5.917 ME: 3801, 3802, 3804, 3805  PSS Completed: (date/initials)REMADE JR 10.25.13 Revisions: 4.29.15 (RAD) Updated legend to have ME# in place of PSS/Base (previous base#7977). 7.6.15 (MAW) Adding UPC area.	<b>CONSTRUCTION</b> Seal/Seam Area Dieline Fold Line Perforation Zipper	<b>GRAPHIC PLACEMENT</b> Print Area Printed Area NO COPY, LIMITED GRAPHICS Non Printed Area NO INK OR COATING Graphics Bleed	<b>3D / DISTORTION</b> NO Distortion Area HIGH Distortion Area
<b>DISCLAIMER/TOLERANCE SPECIFICATIONS:</b> 1.) Glue flap area will be covered by opposing side of label during application 2.) Final outside packaging dimension may vary +/- <.0625" 3.) Eyemark position subject to change pending label application equipment *Colors of the mechanicals within the template may be modified for legibility purposes. Assignment of purpose to these mechanicals has not been altered.			

Front Panel → Final Unwind 3 → Back Panel

5.917" Across

# Varathane

SINCE 1958

## ULTIMATE POLYURETHANE

OIL BASED

**INTERIOR**

**SUPERIOR SCRATCH RESISTANCE**

**MAXIMUM DURABILITY**

**FAST DRY TIME**

**CLEAR GLOSS**

**SATISFACTION GUARANTEED**

**NET WT. 11.25 oz. 319g**

GLUE FLAP → COPY FREE AREA

**DANGER!** EXTREMELY FLAMMABLE LIQUID AND VAPOR. VAPORS MAY CAUSE FLASH FIRE. VAPOR HARMFUL. CONTENTS UNDER PRESSURE. Read other cautions on back panel.

**¡PELIGRO!** LÍQUIDO Y VAPOR EXTREMADAMENTE INFLAMABLES. PUEDEN CAUSAR UN INCENDIO REPENTINO. VAPORES NOCIVOS. NO SOMETER A PRESIÓN. Observar otras precauciones al dorso.

**RUST-OLEUM CORPORATION**  
 11 Hawthorn Pkwy., Vernon Hills, IL 60061  
 800-901-4810 rustoleum.com/varathane  
 Made in USA | Hecho en E.U.A.  
 ©2018 Rust-Oleum Corporation 342465 0418

342076 GLOSS

0 20066 43266 9

**CL&D**

Item#: 1026257	Line Black
C P N: 342465	Black
Customer: Rust Oleum Corporation	485
Plate #: 87191	ORNG
Cust Item: 87191 Clear Gloss	Yellow
Master Est #: 3801	Stock Simm
Size: 5.917" x 8.625" / 150.292mm x 219.075mm	

<b>PLEASE NOTE:</b> Please read and check closely all information on the proof: color, color breaks, spelling, missing text. This information is extremely important. The job will not be sent to print until final OK is received. All information contained in the label and info box are the responsibility of the final approver.
--

<b>PRINTING FLEXOGRAPHIC</b>
<b>CUSTOMER SIGN OFF:</b>
<input type="checkbox"/> APPROVED
<input type="checkbox"/> NOT APPROVED
<b>INITIAL &amp; DATE:</b>
<b>ARTIST INITIAL &amp; DATE:</b>
<b>QC INITIAL &amp; DATE:</b>

<b>CL&amp;D</b> Graphics Inc. 1101 W. 2nd St. Oconomowoc, WI 53066	Ph. (262) 569-4060 Fax (262) 569-4075 www.cldgraphics.com
--	---

<b>JOB HISTORY</b>	(Note: Revisions will be listed here as they occur.)
8.22.18 (JR) New Job Setup.	

**COPY FREE AREA**

**Varathane Polyurethane** is a protective top coat that has been specially formulated to provide the best protection against scratches and stains. Varathane Polyurethane adds a warm, golden glow to your projects.

**BEST PROJECT USAGE:** Interior stained, bare or painted wood surfaces. Ideal for: Furniture, trim, cabinets, doors, paneling and wood toys. **NOT RECOMMENDED FOR:** Linoleum, vinyl or glazed tiles and metal. For wood floors, use Varathane Floor Finishes. **PREVIOUSLY FINISHED SURFACES:** For best adhesion, surfaces must be clean, dry and free of wax, grease, oil, shellac, lacquer, mildew and polishes. Remove shellac with a paint stripper, and mildew with a solution of up to 10% household bleach and tap water. Old finishes in poor condition must be removed. Sand to obtain a smooth surface. Remove all sanding dust using a vacuum or cloth dampened with mineral spirits. **WARNING!** If you scrape, sand, or remove old paint, you may release lead dust. **LEAD IS TOXIC.** Contact the National Lead Hotline at 1-800-424-LEAD or log on to [www.epa.gov/lead](http://www.epa.gov/lead). **STAINED OR PAINTED WOOD:** Follow manufacturer's directions for application of stain or paint. Make certain surface is thoroughly dry before applying Varathane Polyurethane. Refer to manufacturer's label for dry times. For best results, use a Varathane Wood Stain. **UNFINISHED SURFACE PREPARATION:** Sand using 150-220 grit sandpaper and remove all sanding dust using a rag lightly dampened with mineral spirits, or vacuum. If a filler or putty is used, make sure that it does not contain wax and allow enough time to dry thoroughly. **APPLICATION TIPS:** Use adequate ventilation at all times. Apply at temperatures above 55°F or below 90°F. Slower dry times may result from applications on redwood, cedar or woods with high oil content. Use of stain or sealer, periods of high humidity and/or low temperatures. Use full strength. Varathane Polyurethane has a slight amber cast. Test Varathane Polyurethane in an inconspicuous area. Testing is particularly important when applying over paints or stains as their appearance may change slightly when an oil-based finish is applied. **APPLICATION:** Shake can vigorously before and during use. Use a drop cloth or newspapers to protect surrounding areas from spray mist. Spray light mist coats, holding can 10-12 inches from surface. Move can with a smooth sweeping motion to avoid runs and sags. Several light coats give a better finish than one heavy coat. Allow finish to dry 4 hours then re-coat. Give the touch in 2 hours. Once hard in 4 hours. For extra smoothness, sand lightly with fine-grit (220) sandpaper before final coat. For maximum durability, a minimum of 3 coats is recommended. Clean spray button immediately after use by turning can upside down and pressing spray button for 10 seconds or until only clear gas comes out. **CLEAN-UP:** For easy clean-up, use paint thinner or mineral spirits. Dispose of properly. For guidance on disposal of unused product, contact your local or state government environmental control agency. **CVERAGE:** 25-35 square feet.

**CONTAINS: MINERAL SPIRITS, ACETONE, METHYL ETHYL KETONE AND TOLUENE.** Vapor harmful. May affect the brain or nervous system causing dizziness, headache or nausea. Causes eye, skin, nose and throat irritation. Do not puncture or incinerate (burn) container. Exposure to heat or prolonged exposure to sun may cause bursting. Do not expose to heat or store at temperatures above 120°F. **NOTICE:** Reports have associated repeated and prolonged occupational overexposure to solvents with permanent brain and nervous system damage. Intentional misuse by deliberately concentrating and inhaling the contents may be harmful or fatal. Vapors may ignite explosively. Keep away from heat, sparks and flame. Do not smoke. Extinguish all flames and pilot lights and turn off stoves, heaters, electric motors and other sources of ignition during use and until all vapors are gone. Prevent build-up of vapors by opening all windows and doors to achieve cross-ventilation. Use only with adequate ventilation. Do not breathe dust, vapors or spray mist. Ensure fresh air entry during application and drying. If you experience eye watering, headache or dizziness or if air monitoring demonstrates vapor/mist levels are above applicable limits, wear an appropriate, properly fitted respirator (NIOSH approved) during and after application. Follow respirator manufacturer's directions for respirator use. Avoid contact with eyes, skin and clothing. **FIRST AID:** If you experience difficulty in breathing, leave the area to obtain fresh air. If continued difficulty is experienced, get medical attention immediately. In case of eye contact, flush immediately with plenty of water for at least 15 minutes and get medical attention; for skin, wash thoroughly with soap and water. **KEEP OUT OF REACH OF CHILDREN.**

**WARNING:** Cancer and Reproductive Harm - [www.P65Warnings.ca.gov](http://www.P65Warnings.ca.gov).

**SATISFACTION GUARANTEED:** If you are dissatisfied with this product, contact Rust-Oleum Product Support at 800-901-4811 for product replacement or a full refund of the purchase price. Refer to product number and batch code.

**MEJOR USO DEL PRODUCTO:** superficies de madera para interiores que están heridas, pintadas o sin acabados. Ideal para: muebles, molduras, gabinetes, puertas, paneles y juguetes de madera. **NO SE RECOMIENDA PARA:** linóleo, vinilo o azulejos esmaltados y metal. Para el acabado de pisos de madera use Varathane Floor Finishes. **SUPERFICIES QUE YA TIENEN UN ACABADO:** Para lograr una mejor adhesión, las superficies deben estar limpias, secas y sin cera, grasa, aceite, goma laca, laca, mucho ni abrillantadores. Elimine la goma laca con un decapante y los hongos con una solución de hasta el 10% de lejía de uso doméstico y agua del grifo. Se deben quitar todos los acabados anteriores en mal estado. Lleve para obtener una superficie lisa. Quite todo el polvo del fondo con una aspiradora o un paño con solvente mineral. **ADVERTENCIA!** Si raspa, lija o quita pintura antigua, puede desprender polvo con plomo. **EL PLOMO ES TOXICO.** Comuníquese con la Línea Directa Nacional de Información sobre el Plomo al 1-800-424-LEAD o visite [www.epa.gov/lead](http://www.epa.gov/lead). **MADEIRA TENDIDA O PINTADA:** siga las instruções do fabricante para a aplicação do tinta e da tinta. Assegure-se de que a superfície está completamente seca antes de aplicar Varathane Polyurethane. Consulte os tempos de secado na etiqueta do fabricante. Para obter melhores resultados, use um tinte Varathane Wood Stain. **PREPARAÇÃO DE UMA SUPERFÍCIE SEM ACABADO:** Use um papel de lija de grão 150 a 220 e quite todo o pó do lixado com um trapo com solvente mineral ou com uma aspiradora. Se utilizar tapetagem ou massa, assegure-se de que não contenga cera e lixe que se seque por completo. **SUGERÊNCIAS DE APLICAÇÃO:** Sempre, deve haver ventilação adequada. Aplique a temperaturas superiores a 55° F e inferiores a 90° F. Su aplicação sobre secouça, cedro e madeiras com alto conteúdo de azeite, o uso de tintas e seladores, así como los períodos de mucha humedad o bajas temperaturas, pueden prolongar los tiempos de secado. Varathane Polyurethane tiene un ligero tono ambar. Pruebe Varathane Premium Polyurethane en un área poco visible. Es muy importante hacer la prueba cuando se aplica sobre pintura o tinta ya que su apariencia puede cambiar ligeramente cuando se aplica un acabado a base de aceite. **APLICACIÓN:** Agite la lata con fuerza antes y durante el uso. Use un paño protector o periódico para proteger las zonas circundantes de la pulverización. Aplique capas ligeras sosteniendo la lata a 10" o 12" de la superficie. Mueva la lata con un movimiento suave de barrido para evitar que el producto se acumule y se corra. Aplique varias capas ligeras den como resultado un mejor acabado que una sola capa gruesa. Deje que el acabado se seque por 4 horas y vuelva a aplicar otra capa. Seca al tacto en 2 horas. Secado absoluto en 4 horas. Para lograr mayor homogeneidad, lije suavemente con una lija de grano fino (220) antes de aplicar la capa final. Para lograr la máxima durabilidad, se recomienda aplicar 3 capas como mínimo. Limpie de inmediato el botón de spray después de usarlo con agua tibia y presione el botón de spray durante 10 segundos o hasta que solo salga gas limpio. **LIMPIEZA:** Para una limpieza sencilla, utilice diluyente de pintura o solvente mineral. Desheche los residuos de forma adecuada. Para información sobre cómo deshechar el producto no utilizado, comuníquese con su agencia local o estatal de control ambiental gubernamental. **RENDIMIENTO:** Entre 20 y 25 pies cuadrados.

**CONTIENE: AGUARRÁS MINERAL, ACETONA, METIL ETIL CETONA Y TOLUENO.** Vapor nocivo. Puede afectar al cerebro o el sistema nervioso y causar mareos, dolores de cabeza o náuseas. Produce irritación nasal, ocular, de la garganta y de la piel. No debe ser ingerido. No perforar ni incinerar (quemar) el envase. La exposición al calor o la exposición prolongada al sol pueden causar una explosión. No lo exponga al calor ni lo almacene a temperaturas superiores a 120° F. **AVISO:** Existen informes que asocian la sobreexposición ocupacional repetida y prolongada al solvente con daños permanentes en el cerebro y el sistema nervioso. Concentrar e inhalar deliberadamente el contenido puede ser nocivo o mortal y constituye un uso indebido intencional del producto. Los vapores pueden encenderse y causar una explosión. Mantenga el producto alejado del calor, las chispas y las llamas. No fume. Asegure todos las llamas y los pilotos y también apague las estufas, los calentadores, los motores eléctricos y demás fuentes de ignición mientras use el producto y hasta que hayan desaparecido todos los vapores. Abra todas las ventanas y las puertas para tener ventilación cruzada y evitar que se acumulen los vapores. **Utilice solo con la ventilación adecuada.** No inhale polvo, vapores ni partículas de la pulverización. Asegúrese de que entre aire fresco durante la aplicación y el secado. Si se lloran los ojos, salire de dolores de cabeza, mareos o el control del aire demuestra que los niveles de vapor o bruma son superiores a los límites aplicables, use un respirador aprobado que le ajuste adecuadamente (aprobado por NIOSH, Instituto Nacional para la Seguridad y Salud Ocupacional) durante y después de la aplicación. Para utilizarlo, siga las instrucciones del fabricante del respirador. Evite el contacto con los ojos, la piel y la ropa. Lávese bien después de manipular. **PRIMEROS AUXILIOS:** Si tiene dificultades para respirar, abandone el área en busca de aire fresco. Si la dificultad persiste, busque atención médica de inmediato. En caso de contacto con los ojos, enjuague de inmediato con abundante agua durante al menos 15 minutos y busque atención médica. En caso de contacto con la piel, lave bien con agua y jabón. **MANTEGA EL PRODUCTO ALEJADO DEL ALCANCE DE LOS NIÑOS.**

**ADVERTENCIA:** Cáncer y daños reproductivos - [www.P65Warnings.ca.gov](http://www.P65Warnings.ca.gov).

CL&D TECHNICAL SPECIFICATIONS • ROLLED FILM LEGEND			
<b>ROLLED FILM TEMPLATE</b> CUSTOMER: RUST-OLEUM SIZE: (604 x 211) 8.625 X 5.917 ME: 3801, 3802, 3804, 3805  PSS Completed: (date/initials)REMADE JR 10.25.13 Revisions: 4.29.15 (RAD) Updated legend to have ME# in place of PSS/Base (previous base#7977). 7.6.15 (MAW) Adding UPC area.	<b>CONSTRUCTION</b> Seal/Seam Area Dieline Fold Line Perforation Zipper	<b>GRAPHIC PLACEMENT</b> Print Area Printed Area NO COPY, LIMITED GRAPHICS Non Printed Area NO INK OR COATING Graphics Bleed	<b>3D / DISTORTION</b> NO Distortion Area HIGH Distortion Area
<b>DISCLAIMER/TOLERANCE SPECIFICATIONS:</b> 1.) Glue flap area will be covered by opposing side of label during application 2.) Final outside packaging dimension may vary +/- <.0625" 3.) Eyemark position subject to change pending label application equipment *Colors of the mechanicals within the template may be modified for legibility purposes. Assignment of purpose to these mechanicals has not been altered.			

Front Panel → Final Unwind 3 → Back Panel

5.917" Across

**Varathane**  
SINCE 1958  
**ULTIMATE POLYURETHANE**  
OIL BASED  
INTERIOR  
SUPERIOR SCRATCH RESISTANCE  
MAXIMUM DURABILITY  
FAST DRY TIME  
CLEAR GLOSS  
SATISFACTION GUARANTEED

GLUE FLAP ← COPY FREE AREA

5.917" Across

8.625" Around

GLUE FLAP ← COPY FREE AREA

**COPY FREE AREA**

Varathane Polyurethane is a protective top coat that has been specially formulated to provide the best protection against scratches and stains. Varathane Polyurethane sets a warm, golden glow to your projects.

**BEST PROJECT USAGE:** Interior stained, bare or painted wood surfaces. Ideal for: Furniture, trim, cabinets, doors, paneling and wood toys. **NOT RECOMMENDED FOR:** Linoleum, vinyl or glass tiles and metal. For wood floors, use Varathane Floor Finishes. **PREVIOUSLY FINISHED SURFACES:** For best adhesion, surfaces must be clean, dry and free of wax, grease, oil, shellac, lacquer, mildew and polishes. Remove shellac with a paint stripper, and mildew with a solution of up to 10% household bleach and tap water. Old finishes in poor condition must be removed. Sand to obtain a smooth surface. Remove all sanding dust using a vacuum or cloth dampened with mineral spirits. **WARNING!** If you scrape, sand, or remove old paint, you may release lead dust. **LEAD IS TOXIC.** Contact the National Lead Hotline at 1-800-424-LEAD or log on to [www.epa.gov/lead](http://www.epa.gov/lead).

**STAINED OR PAINTED WOOD:** Follow manufacturer's directions for application of stain or paint. Make certain surface is thoroughly dry before applying Varathane Polyurethane. Refer to manufacturer's label for dry times. For best results, use a Varathane Wood Stain. **UNFINISHED SURFACE PREPARATION:** Sand using 150-220 grit sandpaper and remove all sanding dust using a rag lightly dampened with mineral spirits, or vacuum. Fill or patch to level; make sure that it does not contain wax and allow enough time to dry thoroughly. **APPLICATION TIPS:** Use adequate ventilation at all times. Apply at temperatures above 55°F or below 90°F. Slower dry times may result from applications on redwood, cedar or woods with high oil content; use of stain or sealer; periods of high humidity and/or low temperatures. Use full strength. Varathane Polyurethane has a slight amber cast. Test Varathane Polyurethane in an inconspicuous area. Testing is particularly important when applying over varnish or stains as their appearance may change slightly when an oil-based finish is applied. **APPLICATION:** Shake can vigorously before and during use. Use a drop cloth or newspapers to protect surrounding areas from spray mist. Spray light mist coats, holding can 10-12 inches from surface. Move can with a smooth sweeping motion to avoid runs and sags. Several light coats give a better finish than one heavy coat. Allow finish to dry 4 hours then re-coat. Give 10 to 20 hours. Once hard in 4 hours. For extra smoothness, sand lightly with fine-grit (220) sandpaper before final coat. For maximum durability, a minimum of 3 coats is recommended. Clean spray button immediately after use by turning can upside down and pressing spray button for 10 seconds or until only clear gas comes out. **CLEAN-UP:** For easy clean-up, use paint thinner or mineral spirits. Dispose of properly. For guidance on disposal of unused product, contact your local or state government environmental control agency. **COVERAGE:** 20-25 square feet.

**CONTAINS: MINERAL SPIRITS, ACETONE, METHYL ETHYL KETONE AND TOLUENE.** Vapor harmful. May affect the brain or nervous system causing dizziness, headache or nausea. Causes eye, skin, nose and throat irritation. Do not puncture or incinerate (burn) container. Exposure to heat or prolonged exposure to sun may cause bursting. Do not expose to heat or store at temperatures above 120°F. **NOTICE:** Reports have associated repeated and prolonged occupational overexposure to solvents with permanent brain and nervous system damage. Intentional misuse by deliberately concentrating and inhaling the contents may be harmful or fatal. Vapors may ignite explosively. Keep away from heat, sparks and flame. Do not smoke. Extinguish all flames and pilot lights and turn off stoves, heaters, electric motors and other sources of ignition during use and until all vapors are gone. Prevent build-up of vapors by opening all windows and doors to achieve cross-ventilation. Use only with adequate ventilation. Do not breathe dust, vapors or spray mist. Ensure fresh air entry during application and drying. If you experience eye watering, headache or dizziness or if air monitoring demonstrates vapor/mist levels are above applicable limits, wear an appropriate, properly fitted respirator (NIOSH approved) during and after application. Follow respirator manufacturer's directions for respirator use. Avoid contact with eyes, skin and clothing. **FIRST AID:** If you experience difficulty in breathing, leave the area to obtain fresh air. If continued difficulty is experienced, get medical attention immediately. In case of eye contact, flush immediately with plenty of water for at least 15 minutes and get medical attention; for skin, wash thoroughly with soap and water. **KEEP OUT OF REACH OF CHILDREN.**

**WARNING:** Cancer and Reproductive Harm - [www.PCSWarnings.ca.gov](http://www.PCSWarnings.ca.gov).

**SATISFACTION GUARANTEED:** If you are dissatisfied with this product, contact Rust-Oleum Product Support at 800-901-4411 for product replacement or a full refund of the purchase price. Refer to product number and batch code.

**MEJOR USO DEL PRODUCTO:** superficies de madera para interiores que están torcidas, pintadas o sin acabados. Ideal para: muebles, molduras, gabinetes, puertas, paneles y juguetes de madera. **NO SE RECOMIENDA PARA:** linóleo, vinilo o azulejos esmaltados y metal. Para el acabado de pisos de madera use Varathane Floor Finishes. **SUPERFICIES QUE YA TIENEN UN ACABADO:** Para lograr una mejor adhesión, las superficies deben estar limpias, secas y sin cera, grasa, aceite, goma laca, cera, polvo ni abrillantadores. Elimine la goma laca con un decapante y los hongos con una solución de hasta el 10% de lejía de uso doméstico y agua del grifo. Se deben quitar todos los acabados anteriores en mal estado. Lije para obtener una superficie lisa. Quite todo el polvo del liado con una aspiradora o un paño con solvente mineral. **ADVERTENCIA!** Si rasca, lija o quita pintura antigua, puede desprenderse polvo con plomo. **EL PLOMO ES TOXICO.** Comuníquese con la Línea Directa Nacional de Información sobre el Plomo al 1-800-424-LEAD o visite [www.epa.gov/lead](http://www.epa.gov/lead). **MODELA TENDIDA O PINTADA:** siga las instrucciones del fabricante para la aplicación del tinte o la tinta. Asegure de que la superficie está completamente seca antes de aplicar Varathane Polyurethane. Consulte los tiempos de secado en la etiqueta del fabricante. Para obtener mejores resultados, use un tinte Varathane Wood Stain. **PREPARACIÓN DE UNA SUPERFICIE SIN ACABADO:** Use un papel de lija de grano 150-220 y quite todo el polvo del liado con un trapo con solvente mineral o con una aspiradora. Si utiliza solventes, mantélosse lejos de que no contenga cera y lejía que se seque por completo. **SUGERENCIAS DE APLICACIÓN:** Siempre debe haber ventilación adecuada. Aplique a temperaturas superiores a 55° F e inferiores a 90° F. Su aplicación sobre secoya, cedro o maderas con alto contenido de aceite, el uso de tintes o selladores, así como los períodos de mucha humedad o bajas temperaturas, pueden prolongar los tiempos de secado. Varathane Polyurethane tiene un ligero tono ámbar. Pruebe Varathane Premium Polyurethane en un área poco visible. Es muy importante hacer la prueba cuando se aplica sobre pintura o tinte ya que su apariencia puede cambiar ligeramente cuando se aplica un acabado a base de aceite. **APLICACIÓN:** Agite la lata con fuerza antes y durante el uso. Use un paño protector o periódico para proteger las zonas circundantes de la pulverización. Aplique capas ligeras sosteniendo la lata a 10" a 12" de la superficie. Mueva la lata con un movimiento suave de barrido para evitar que el producto se acumule y se corra. Aplicar varias capas ligeras dan como resultado un mejor acabado que una sola capa gruesa. Deje que el acabado se seque por 4 horas y vuelva a aplicar otra capa. Seca al tacto en 2 horas. Secado absoluto en 4 horas. Para lograr mayor homogeneidad, lije suavemente con una lija de grano fino (220) antes de aplicar la capa final. Para lograr la máxima durabilidad, se recomienda aplicar 3 capas como mínimo. Limpie de inmediato el botón de accionamiento después de usarlo con un paño de algodón y presione el botón de accionamiento durante 10 segundos o hasta que solo salga gas limpio. **LIQUIDACIÓN:** Para una limpieza sencilla, utilice diluyente de pintura o solvente mineral. Descarte los residuos de forma adecuada. Para información sobre cómo desechar el producto no utilizado, comuníquese con su agencia local estatal de control ambiental gubernamental. **RENDIMIENTO:** Entre 20 y 25 pies cuadrados.

**CONTIENE: AGUARRÁS MINERAL, ACETONA, METIL ETIL CETONA Y TOLUENO.** Vapor nocivo. Puede afectar el cerebro o el sistema nervioso y causar mareos, dolores de cabeza o náuseas. Produce irritación nasal, ocular, de la garganta y de la piel. No debe quemarse. No perforar ni incinerar (quemar) el envase. La exposición al calor o la exposición prolongada al sol pueden causar una explosión. No lo exponga al calor ni lo almacene a temperaturas superiores a 120° F. **AVISO:** Existen informes que asocian la sobreexposición ocupacional repetida y prolongada al solvente con daños permanentes en el cerebro y el sistema nervioso. Concentrar e inhalar deliberadamente el contenido puede ser nocivo o mortal y constituye un uso intencional del producto. Los vapores pueden encenderse y causar una explosión. Mantenga el producto alejado del calor, las chispas y las llamas. No fume. Asegure todos las llamas y los pilotos y también apague las estufas, los calentadores, los motores eléctricos y demás fuentes de ignición mientras use el producto y hasta que hayan desaparecido todos los vapores. Abra todas las ventanas y las puertas para tener ventilación cruzada y evitar que se acumulen los vapores. **Utilice solo con la ventilación adecuada.** No inhale polvo, vapores ni partículas de la pulverización. Asegure de que entre aire fresco durante la aplicación y el secado. Si se irritan los ojos, sufre de dolores de cabeza, mareos o el control del aire demuestra que los niveles de vapor o ozono son superiores a los límites aplicables, use un respirador apropiado que le ajuste adecuadamente (aprobado por NIOSH, Instituto Nacional para la Seguridad y Salud Ocupacional) durante y después de la aplicación. Para utilizarlo, siga las instrucciones del fabricante del respirador. Evite el contacto con los ojos, la piel y la ropa. Lávese bien después de manipular. **PRIMEROS AUXILIOS:** Si tiene dificultades para respirar, abandone el área en busca de aire fresco. Si la dificultad persiste, busque atención médica de inmediato. En caso de contacto con los ojos, enjuague de inmediato con abundante agua durante al menos 15 minutos y busque atención médica. En caso de contacto con la piel, lave bien con agua y jabón. **MANTEGA EL PRODUCTO ALEJADO DEL ALCANCE DE LOS NIÑOS.**

**ADVERTENCIA:** Cáncer y daños reproductivos - [www.PCSWarnings.ca.gov](http://www.PCSWarnings.ca.gov).

**RUST-OLEUM CORPORATION**  
 11 Hawthorn Pkwy., Vernon Hills, IL 60061  
 800-901-4810 [rustoleum.com/varathane](http://rustoleum.com/varathane)  
 Made in USA | Hecho en E.U.A.  
 ©2018 Rust-Oleum Corporation 342465 0418

342076 GLOSS  
  
 0 20066 43266 9

Item#: 1026257	Line Black
C P N: 342465	Black
Customer: Rust Oleum Corporation	485
Plate #: 87191	ORNG
Cust Item: 87191 Clear Gloss	Yellow
Master Est #: 3801	White
Size: 5.917" x 8.625" / 150.292mm x 219.075mm	Bump White
	Stock Simm

**PLEASE NOTE:**  
 Please read and check closely all information on the proof: color, color breaks, spelling, missing text. This information is extremely important. The job will not be sent to print until final OK is received. All information contained in the label and info box are the responsibility of the final approver.

**PRINTING FLEXOGRAPHIC**

**CUSTOMER SIGN OFF:**

APPROVED

NOT APPROVED

**INITIAL & DATE:**

**ARTIST INITIAL & DATE:**

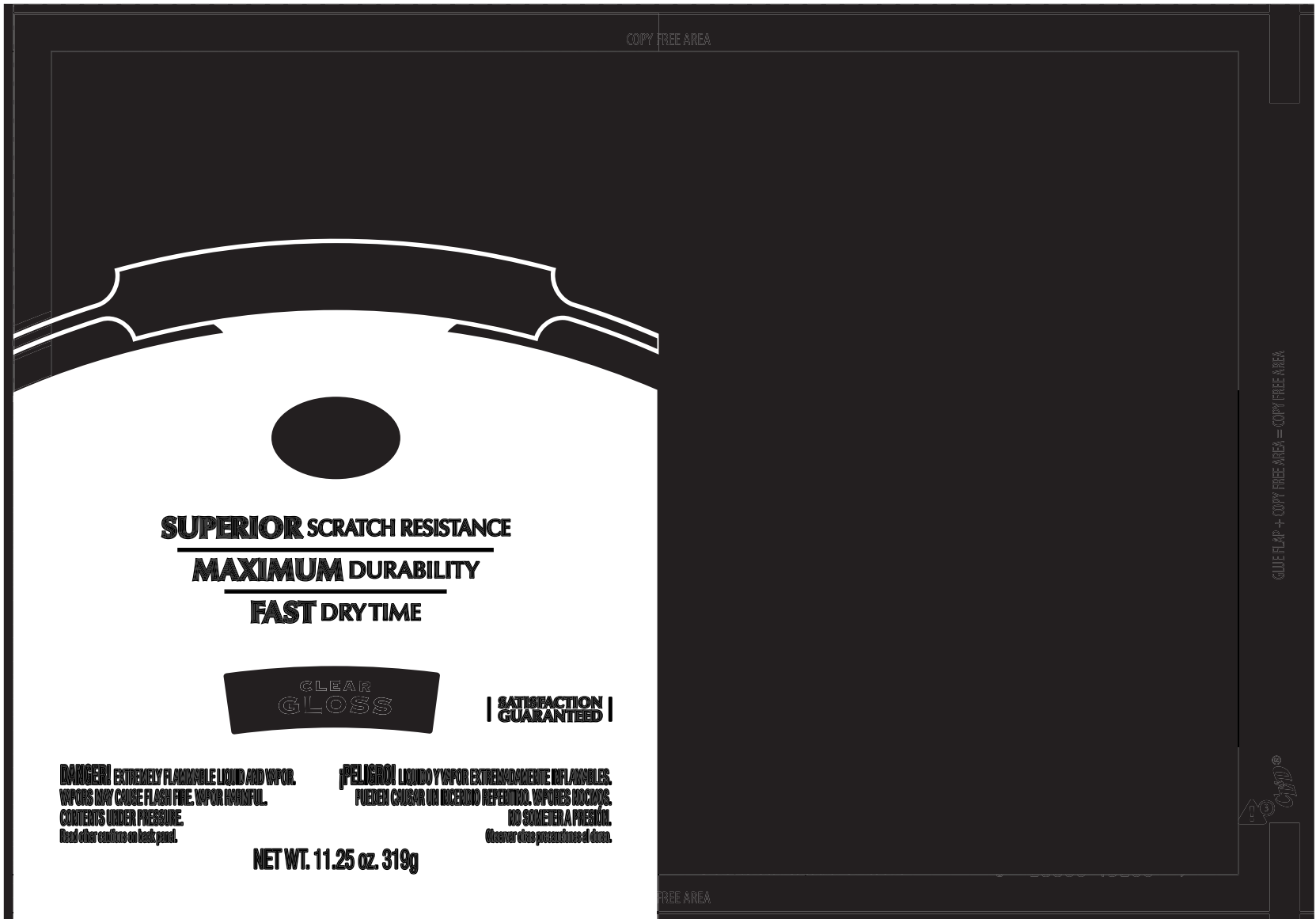
**QC INITIAL & DATE:**

**CL&D** CL&D Graphics Inc.  
 1101 W. 2nd St.  
 Oconomowoc, WI 53066

Ph. (262) 569-4060  
 Fax (262) 569-4075  
[www.cldgraphics.com](http://www.cldgraphics.com)

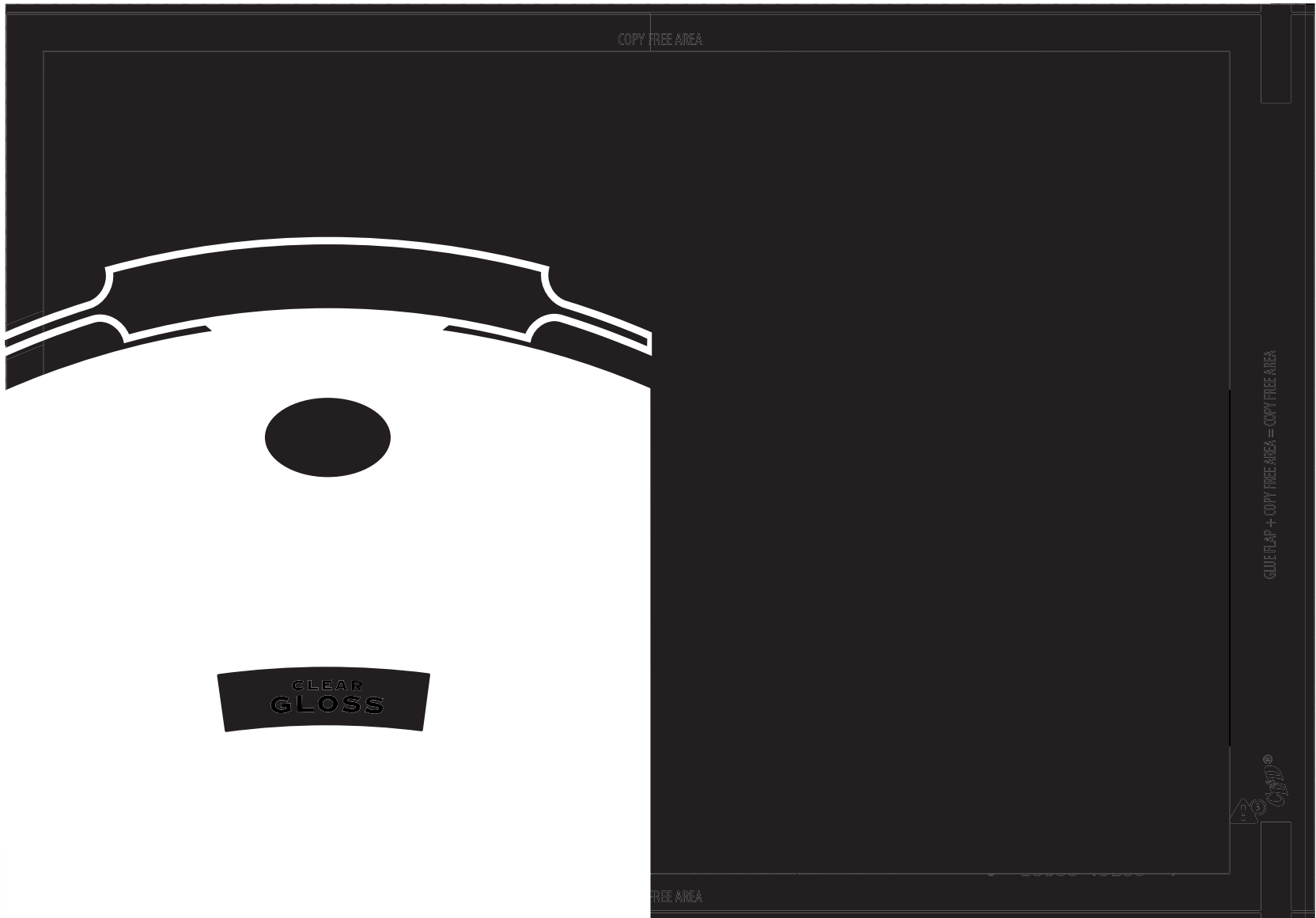
JOB HISTORY	(Note: Revisions will be listed here as they occur.)
8.22.18 (JR) New Job Setup.	

CL&D TECHNICAL SPECIFICATIONS • ROLLFED FILM LEGEND		
<b>ROLLFED FILM TEMPLATE</b> CUSTOMER: RUST-OLEUM SIZE: (604 x 211) 8.625 X 5.917 ME: 3801, 3802, 3804, 3805  PSS Completed: (date/initials)REMADE JR 10.25.13 Revisions: 4.29.15 (RAD) Updated legend to have ME# in place of PSS/Base (previous base#7977). 7.6.15 (MAW) Adding UPC area.		
<b>DISCLAIMER/TOLERANCE SPECIFICATIONS:</b> 1.) Glue flap area will be covered by opposing side of label during application 2.) Final outside packaging dimension may vary +/- <.0625" 3.) Eyemark position subject to change pending label application equipment *Colors of the mechanicals within the template may be modified for legibility purposes. Assignment of purpose to these mechanicals has not been altered.		



Item#: 1026257  C P N: 342465  Customer: Rust Oleum Corporation  Plate #: 87191  Cust Item: 87191 Clear Gloss  Master Est #: 3801  Size: 5.917" x 8.625" ^ 150.292mm x 219.075mm	<b>PLEASE NOTE:</b> Please read and check closely all information on the proof: color, color breaks, spelling, missing text. This information is extremely important. The job will not be sent to print until final OK is received. All information contained in the label and info box are the responsibility of the final approver.	<b>PRINTING FLEXOGRAPHIC</b>  <b>CUSTOMER SIGN OFF:</b> <input type="checkbox"/> APPROVED <input type="checkbox"/> NOT APPROVED  <b>INITIAL &amp; DATE:</b> _____ <b>ARTIST INITIAL &amp; DATE:</b> _____ <b>QC INITIAL &amp; DATE:</b> _____
<b>JOB HISTORY</b> (Note: Revisions will be listed here as they occur.) 8.22.18 (JR) New Job Setup.		

CL&D TECHNICAL SPECIFICATIONS • ROLLFED FILM LEGEND			
<b>ROLLFED FILM TEMPLATE</b> CUSTOMER: RUST-OLEUM SIZE: (604 x 211) 8.625 X 5.917 ME: 3801, 3802, 3804, 3805			
PSS Completed: (date/initials)REMADE JR 10.25.13 Revisions: 4.29.15 (RAD) Updated legend to have ME# in place of PSS/Base (previous base#7977). 7.6.15 (MAW) Adding UPC area.			
<b>DISCLAIMER/TOLERANCE SPECIFICATIONS:</b> 1.) Glue flap area will be covered by opposing side of label during application 2.) Final outside packaging dimension may vary +/- < .0625" 3.) Eyemark position subject to change pending label application equipment *Colors of the mechanicals within the template may be modified for legibility purposes. Assignment of purpose to these mechanicals has not been altered.			



Item#: 1026257  C P N: 342465  Customer: Rust Oleum Corporation  Plate #: 87191  Cust Item: 87191 Clear Gloss  Master Est #: 3801  Size: 5.917" x 8.625" ^ 150.292mm x 219.075mm	<b>PLEASE NOTE:</b> Please read and check closely all information on the proof: color, color breaks, spelling, missing text. This information is extremely important. The job will not be sent to print until final OK is received. All information contained in the label and info box are the responsibility of the final approver.	<b>PRINTING FLEXOGRAPHIC</b>  <b>CUSTOMER SIGN OFF:</b> <input type="checkbox"/> APPROVED <input type="checkbox"/> NOT APPROVED  <b>INITIAL &amp; DATE:</b> _____ <b>ARTIST INITIAL &amp; DATE:</b> _____ <b>QC INITIAL &amp; DATE:</b> _____
<b>JOB HISTORY</b> (Note: Revisions will be listed here as they occur.) 8.22.18 (JR) New Job Setup.		