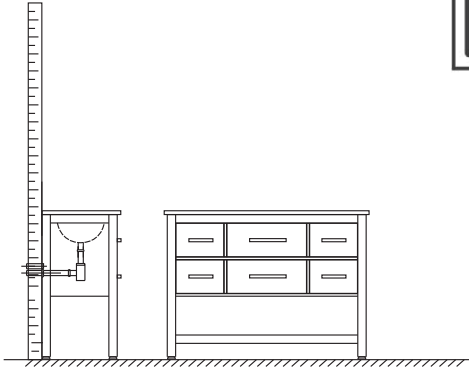
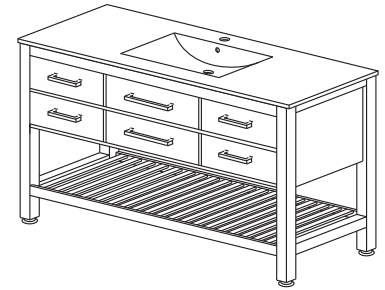


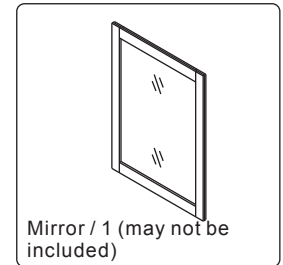
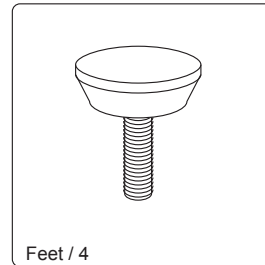
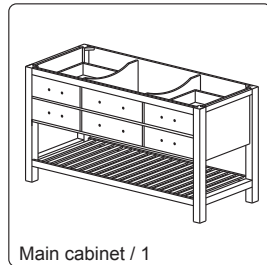
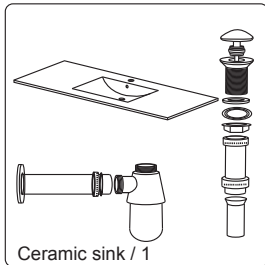
WYNDHAM COLLECTION



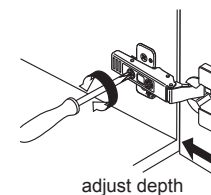
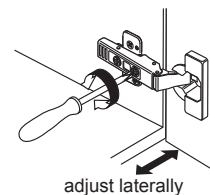
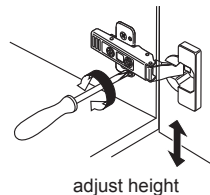
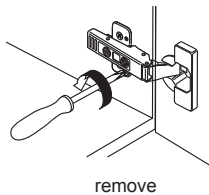
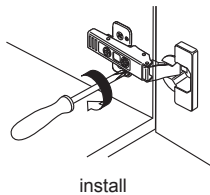
- Prior to installation please check received items against the "Packaging List". Please report any missing items to your retailer immediately.
- Protect all surfaces from sharp objects, high heat sources, direct prolonged sunlight and chemical hazards.
- Professional installation recommended.



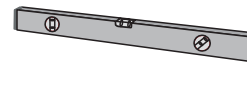
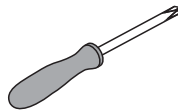
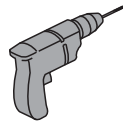
PACKING LIST



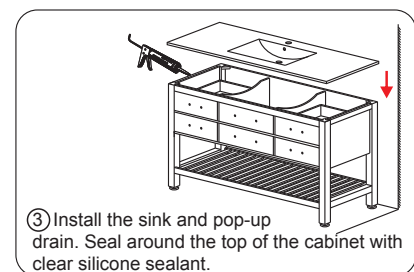
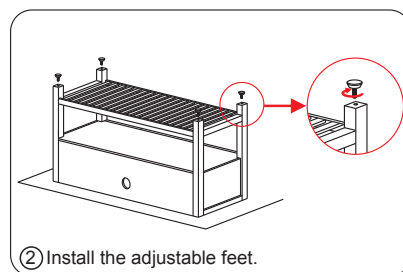
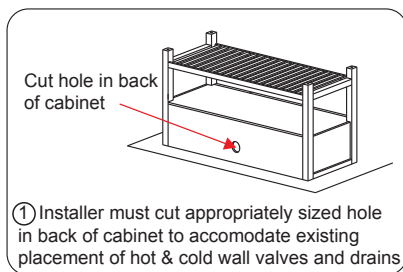
INSTALLATION AND ADJUSTMENT OF HINGES (if required)



REQUIRED TOOLS NOT IN BOX

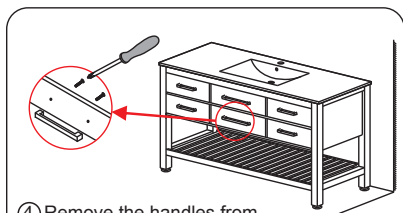


INSTALLATION INSTRUCTIONS

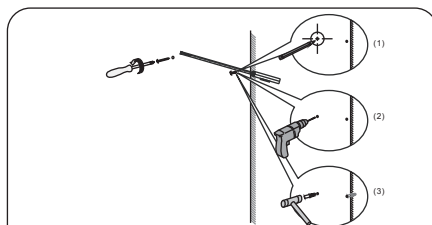


WC-2111-48
INSTALLATION

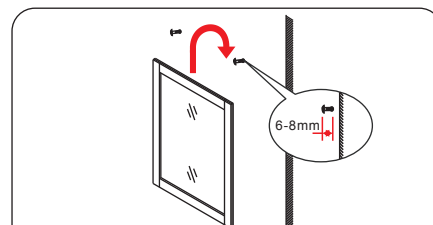
WYNDHAM COLLECTION



④ Remove the handles from inside the cabinet doors and drawers and reinstall on the outside. Do not over-tighten when reattaching.



⑤ Install the mirror: use a pencil to mark the placement of the screw holes on the wall, drill the holes and insert the plastic wall anchors.



⑥ Install the screws into the wall anchors, leaving enough of the screw exposed to hang the mirror - approx 1/4" - 1/2".

WC-2111-48
INSTALLATION