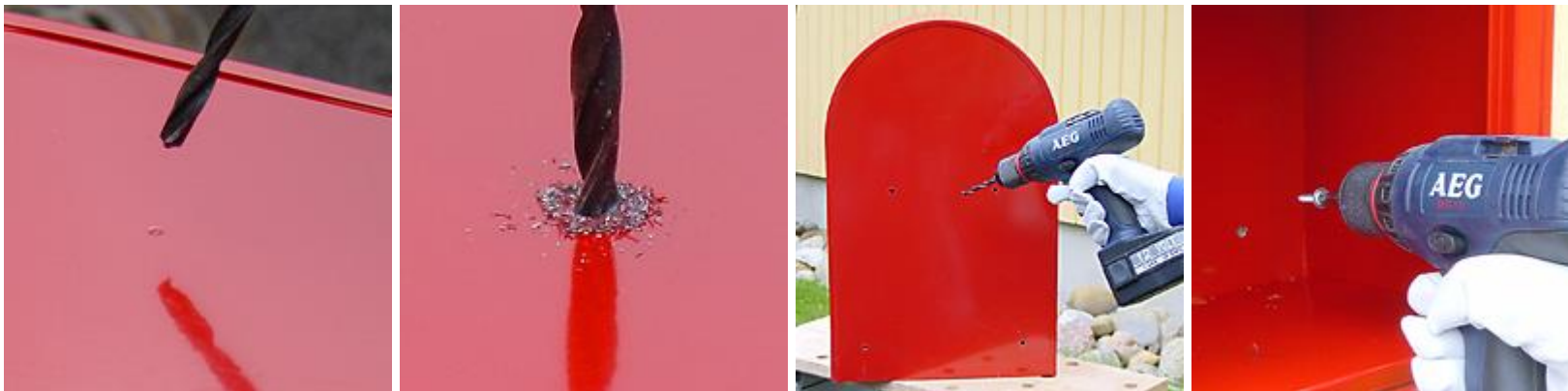




BOBI MAILBOX WALL MOUNT INSTALLATION INSTRUCTIONS

- First find the four pre-marked points on the rear of the mailbox.
- Second with a $\frac{1}{4}$ " drill bit for drilling into metal drill out the four rear holes.
- Last mount the mailbox to the wall with the screws provided.

Note: Screws are included for mounting the mailbox on any wood wall. If mounting to any surface other than wood you will need to purchase the necessary hardware separately.



BOBI USA

www.bobi.com