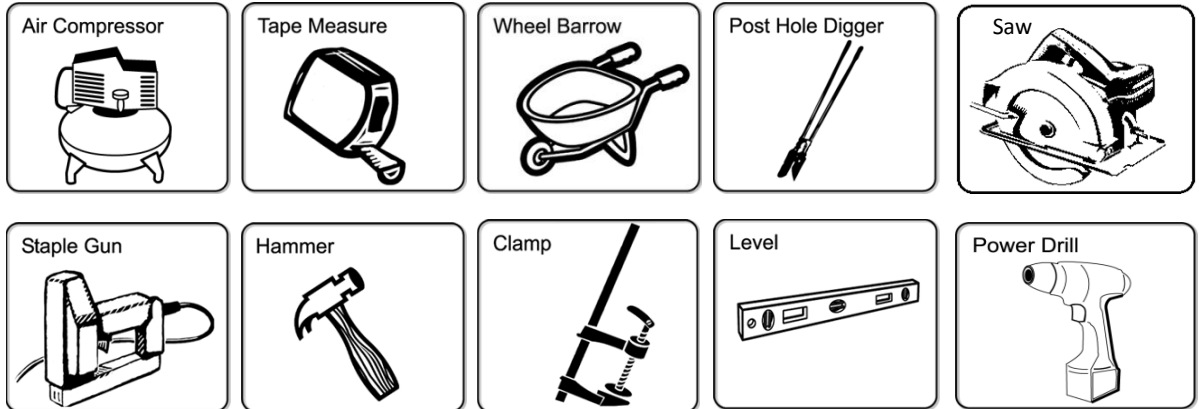
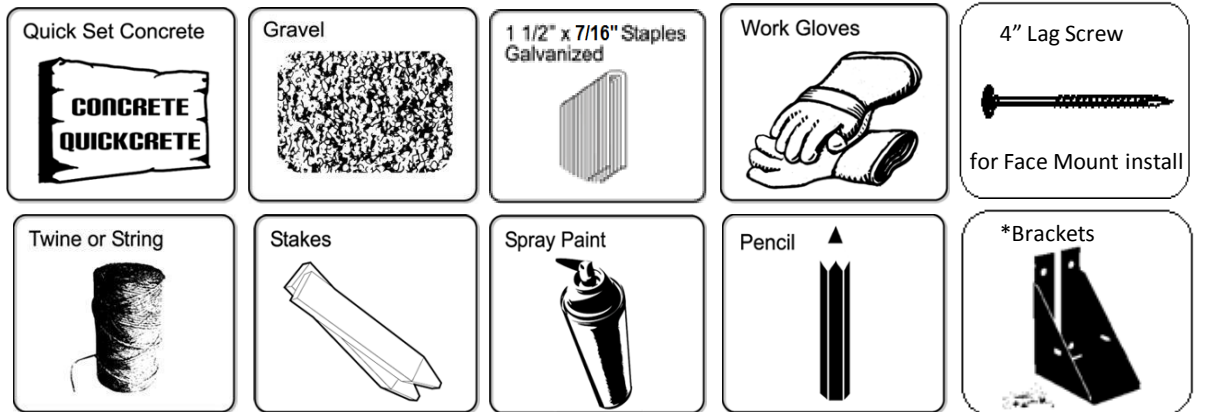


Composite Fencing Installation Instructions FOR DOGEAR PICKET INSTALL

Tools Needed:



Supplies:



*for Side Mount install

Prior to installing fencing:

- ✓ Prior to digging, confirm location of underground utilities with local authorities.
- ✓ Apply for permits if required by local authorities and codes.
- ✓ Local zoning laws, neighborhood associations and/or historic districts may regulate size, type, placement and ability of fencing. Ensure compliance prior to installation.
- ✓ **Due to variation in picket width, minor adjustments to gapping may be required. Care should be taken to ensure that spacing does not result in too large of gap at the end posts**

1. Planning:

- ✓ Determine total area to be fenced.
- ✓ Site-Built installation: Ensure the right amount of pickets and rails per section.
- ✓ Make adjustments for odd widths at the back corners or build partial sections equally. Example: if you have 8 feet left in a run, consider building two 4ft sections rather than a 6ft and a 2ft.
- ✓ Determine the number of posts including gate post & gate location (if applicable).
- ✓ Installations are facilitated with the use of an air compressor or air driven staple gun. Recommended fasteners are 7/16" crown x 1 1/2" galvanized or stainless steel staples, minimum 18ga.

2. Layout (See diagram below)

2A. Establish total area to be fenced. Insert stakes 6" inside of proposed area extending an additional 3' laterally so as not to disturb string lines when digging post holes.

2B. Attach string line to staked area. Verify corners are square using the 3' x 4' x 5' method.

2C. Fence corners are determined by where strings intersect.

2D. Mark locations for subsequent posts starting with the first location and measuring the appropriate distance determined by install method.

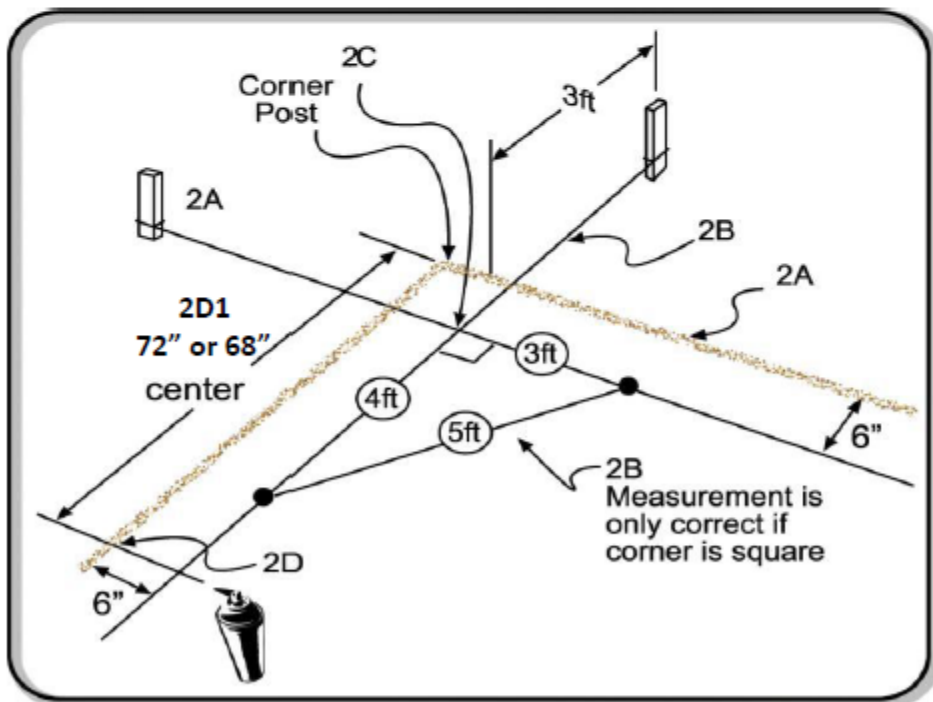
2D1. **Bracket Side Mount – 72" post center to post center**

Face Mount – 68" post center to post center

✓ Mark gate location and size. **Minimum 44" inside posts when using Adjustable Gate Frame.**

✓ Place proper post at each location.

Tip: When marking measurements with spray paint, mark both the ground *and* string (see illustration).



1st CHOOSE
Bracket Mount
 OR
Face Mount

FACE MOUNT

INSTALL INSTRUCTIONS BELOW

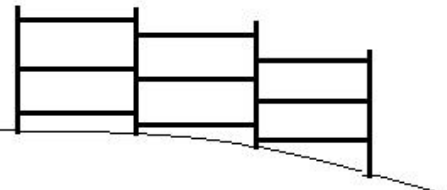
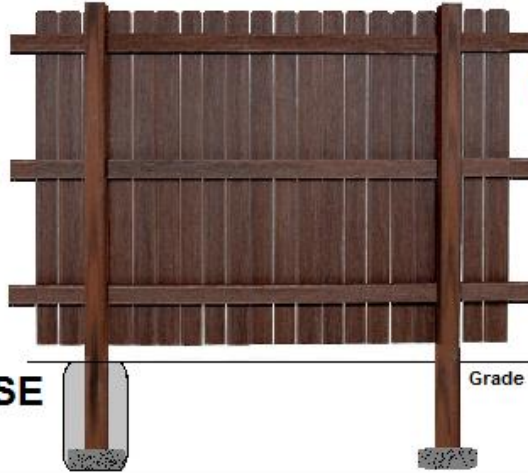
Line posts = 68" Post Center - Post Center



B: CROSS RAILS

C: PICKETS

A: ALL PURPOSE POSTS



* For sloping: step rails down

A POSTS



1 Dig Hole :
 Dig hole 12" wide x 30" deep



2 Add Gravel :
 Add 6" gravel (depth now = 24")



3 Set Post :
 Set post + 120 lbs of Quikrete

4 Set Next Post . Note: Post distance varies based on line, end, corner. See B2 below or page 7, 9, 11

B CROSS RAILS

1 Use Locator :

Predrill holes into rails centered 1" from each rail end with 1/2" drill bit. Align rail locator with post. Mark post for each rail location. Leave a 1/4" gap between rail ends. Attach with 3.5 - 4" ceramic or zinc coated lag screws. Touch tightened. **NO NAILS**



2 For a Corner :

Either overlap the rail ends OR cut rail ends to 45° angles



Rail & Bracket Locator Template

DOG-EAR PICKETS



FACE MOUNT

INSTALL INSTRUCTIONS BELOW



See page 9



Spread pickets evenly across both sides of rail

- 1** Pickets: 1" down from post top
- 2** Pickets: 2" up from ground
- 3** Staples: 1 1/2" Galvanized or Stainless Steel
- 4** Staples: 4 staples per picket & rail crossing

* Cover rail seam with picket

Shadow Box



See page 11



Spread pickets evenly overlapping on 1 side of rail

- 1** Pickets: 1" down from post top
- 2** Pickets: 2" up from ground
- 3** Staples: 1 1/2" Galvanized or Stainless Steel
- 4** Staples: 4 staples per picket & rail crossing

* Cover rail seam with picket

Board on Board



See page 7

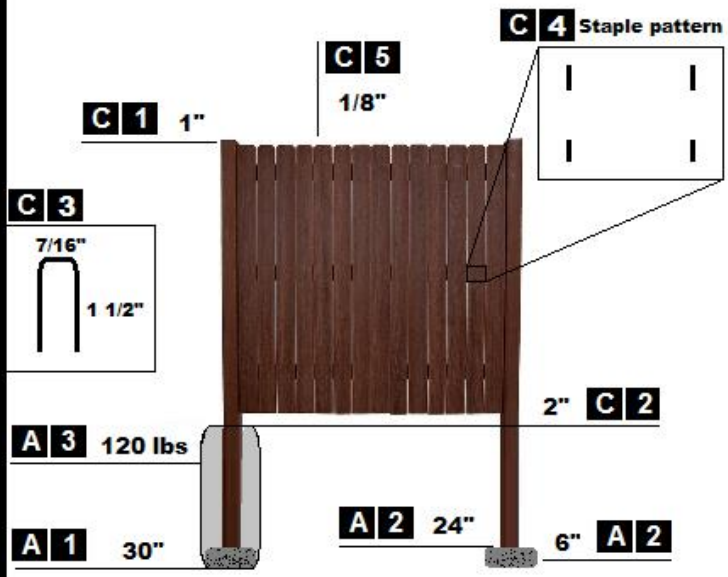


1/8" spacing between pickets

- 1** Pickets: 1" down from post top
- 2** Pickets: 2" up from ground
- 3** Staples: 1 1/2" Galvanized or Stainless Steel
- 4** Staples: 4 staples per picket & rail crossing

* Cover rail seam with picket

Traditional



1st CHOOSE
Bracket Mount
OR
Face Mount

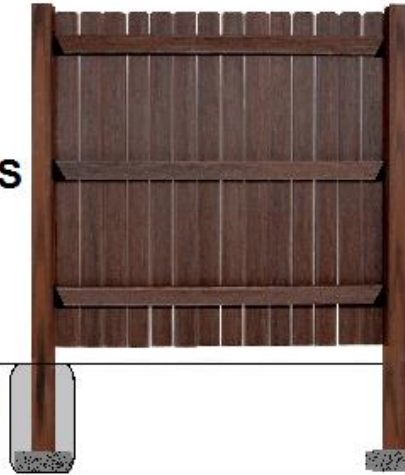
BRACKET MOUNT

INSTALL INSTRUCTIONS BELOW

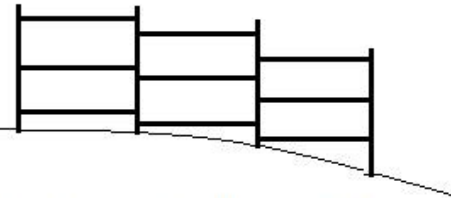
72" Post Center - Post Center



B: CROSS RAILS



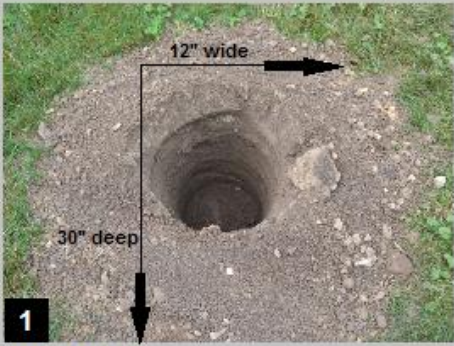
C: PICKETS



* For sloping: step brackets down

A: ALL PURPOSE POSTS

A POSTS



1 Dig Hole :
 Dig hole 12" wide x 30" deep



2 Add Gravel :
 Add 6" gravel (depth now = 24")



3 Set Post :
 Set post + 120 lbs of Quikrete

4 Next Post : Set next post 72" on center post - post

B CROSS RAILS



1 Use Locator :
 Place rail & bracket locator template square against post. Slide brackets into location. Attach with provided screws.



2 Add Cross Rails :
 Slide cross rails into brackets, attach with provided screws



DOG-EAR PICKETS



BRACKET MOUNT

INSTALL INSTRUCTIONS BELOW

See page 10



9 pickets on front / 8 pickets on back

- 1** Pickets: 1" down from post top
- 2** Pickets: 2" up from ground
- 3** Staples: 1 1/2" Galvanized or Stainless Steel
- 4** Staples: 4 staples per picket & rail crossing

Shadow Box



See page 8



14 pickets on 1 side of cross rails

- 1** Pickets: 1" down from post top
- 2** Pickets: 2" up from ground
- 3** Staples: 1 1/2" Galvanized or Stainless Steel
- 4** Staples: 4 staples per picket & rail crossing
- 5** 1/8" spacing between pickets

Traditional



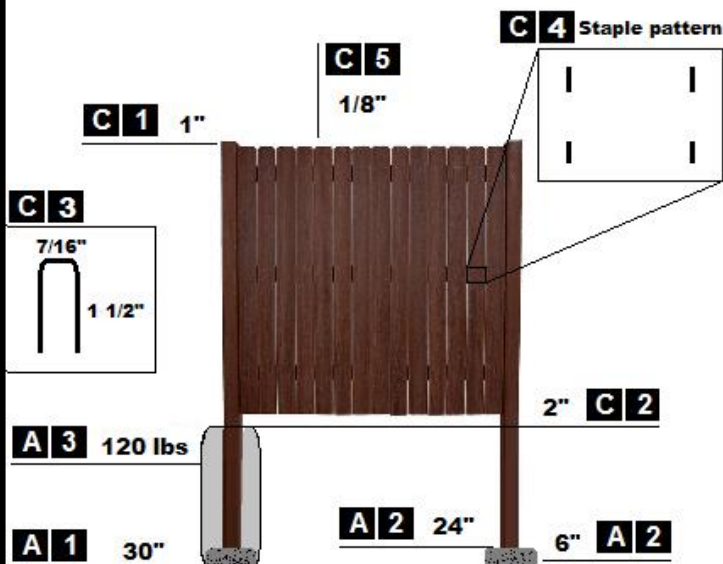
See page 12



9 pickets in / 8 pickets out

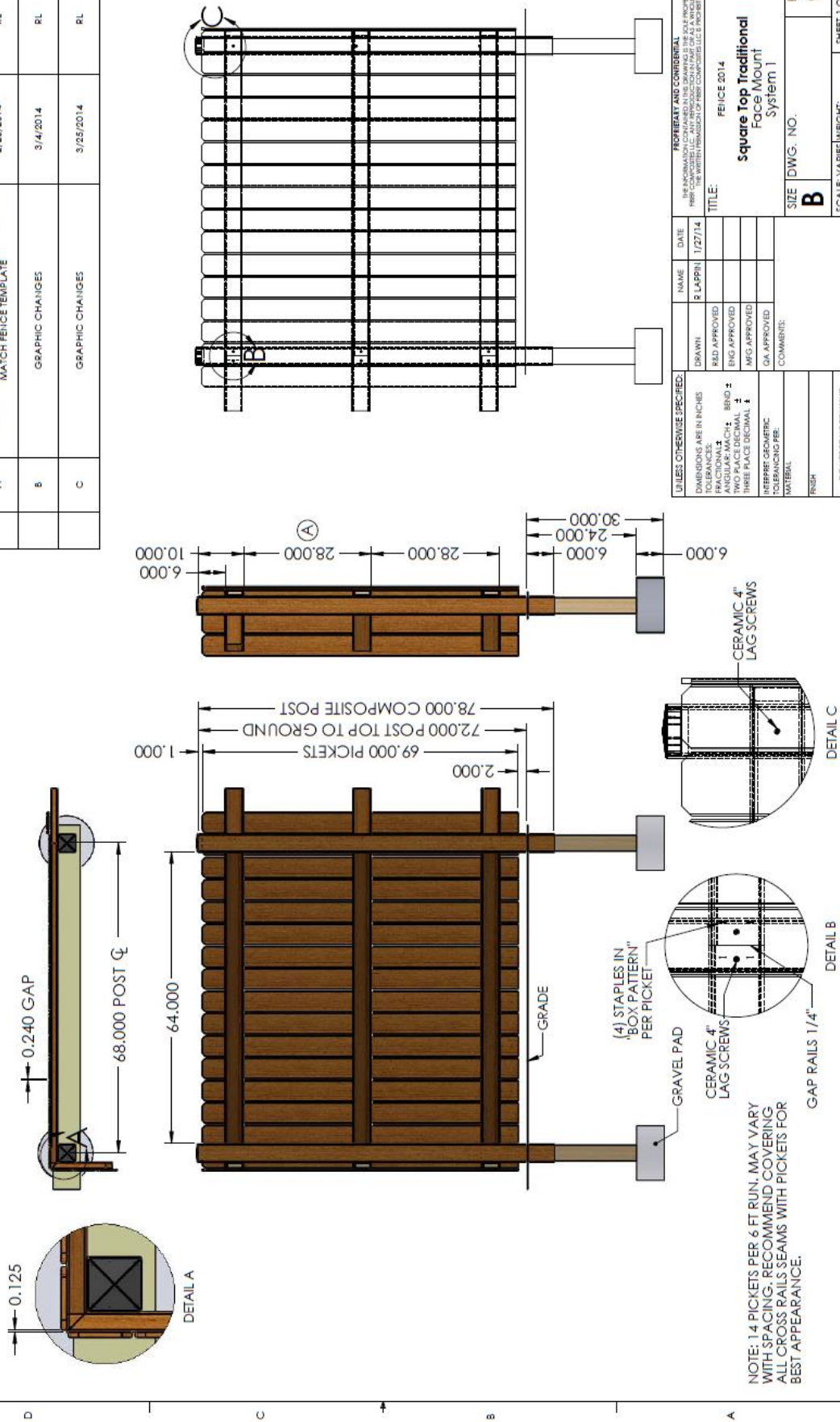
- 1** Pickets: 1" down from post top
- 2** Pickets: 2" up from ground
- 3** Staples: 1 1/2" Galvanized or Stainless Steel
- 4** Staples: 4 staples per picket & rail crossing

Board on Board



4 5/8" Dogear Traditional Face Mount
68 inch Post Centers-to-Center

4 5/8" Dogear Traditional Face Mount
68 inch Post Centers-to-Center



REVISIONS				
ZONE	REV.	DESCRIPTION	DATE	APPROVED
	A	CHANGED SPACING BETWEEN BACKER RAILS TO MATCH FENCE TEMPLATE	2/25/2014	RL
	B	GRAPHIC CHANGES	3/4/2014	RL
	C	GRAPHIC CHANGES	3/25/2014	RL

REGULATORY AND COMPLIANCE
 THE INFORMATION CONTAINED IN THIS DRAWING IS THE SOLE PROPERTY OF FIBERGLASS FENCE SYSTEMS, INC. NO PART OF THIS DRAWING IS TO BE REPRODUCED OR TRANSMITTED IN ANY FORM OR BY ANY MEANS, ELECTRONIC OR MECHANICAL, INCLUDING PHOTOCOPYING, RECORDING, OR BY ANY INFORMATION STORAGE AND RETRIEVAL SYSTEM.

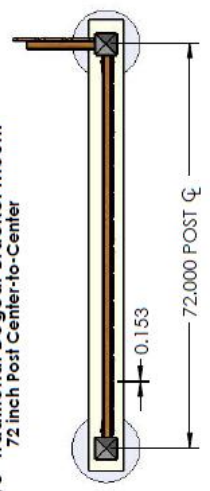
NAME: R LARPIN DATE: 1/27/14
 DRAWN: [] DATE: []
 REVISIONS: []
 ENG. APPROVED: []
 MFG. APPROVED: []
 QA APPROVED: []
 COMMENTS: []

FEICE 2014
Square Top Traditional Face Mount System 1

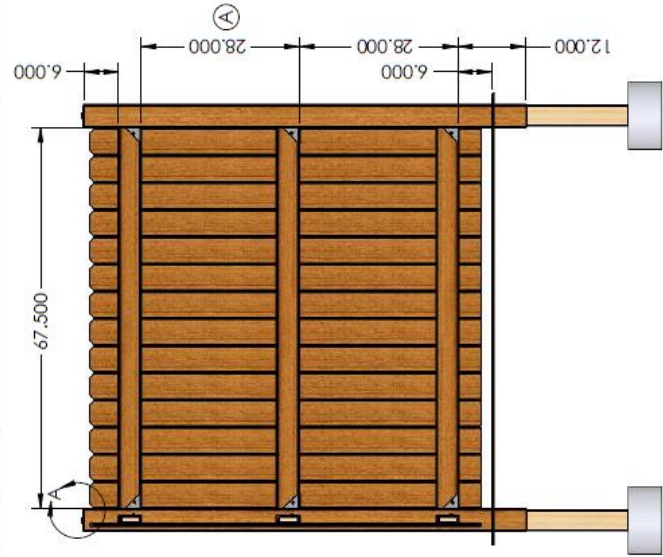
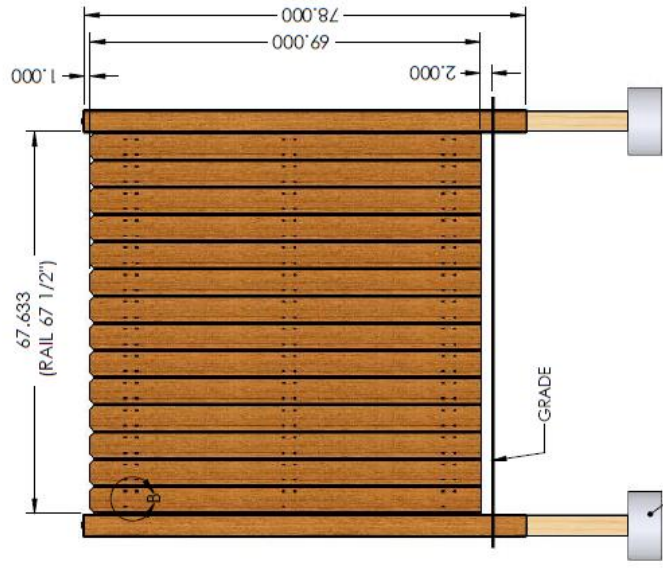
REV: C
 SCALE: VARIES WEIGHT: []
 SHEET 1 OF 1

NOTE: 14 PICKETS PER 6 FT RUN, MAY VARY WITH SPACING. RECOMMEND COVERING ALL CROSS RAILS SEAMS WITH PICKETS FOR BEST APPEARANCE.

**4 5/8" Traditional Dogear Bracket Mount
72 inch Post Center-to-Center**



NOTE: SECURE USING "BOX" PATTERN EXCEPT WHERE BRACKETS INTERFERE



**4 5/8" Traditional Dogear Bracket Mount
72 inch Post Center-to-Center**

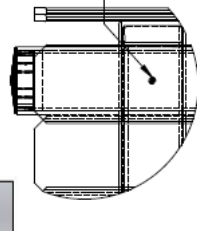
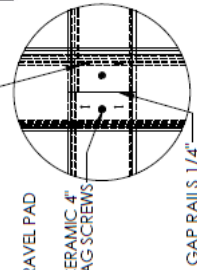
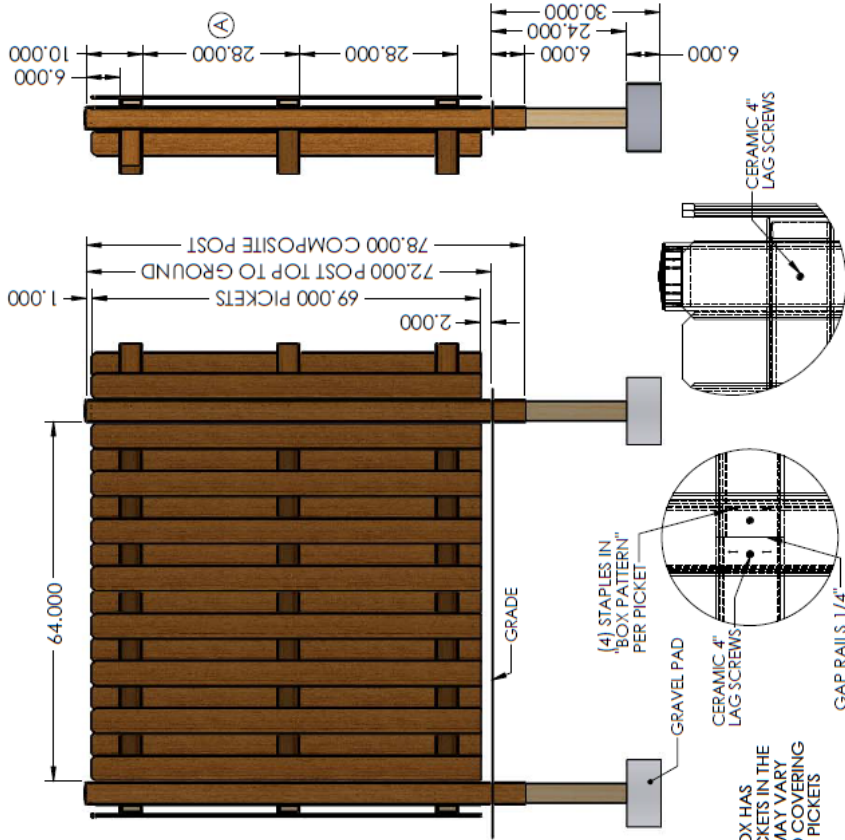
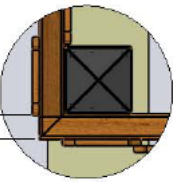
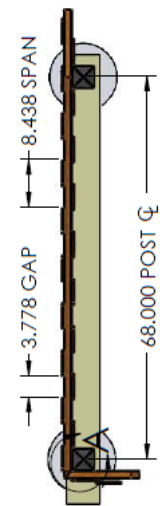
REVISIONS				
ZONE	REV.	DESCRIPTION	DATE	APPROVED
	A	CORRECTED RAIL LOCATIONS TO MATCH INSTALLATION TEMPLATE	2/28/2014	RL
	B	GRAPHIC CHANGES	3/20/2014	RL
	C	GRAPHIC CHANGES	3/25/2014	RL

UNLESS OTHERWISE SPECIFIED:		NAME	DATE
DIMENSIONS ARE IN INCHES		R. LAPPIN	1/14/14
TOLERANCES:		DRAWN	
ANGULAR: MACH: ±		RAD APPROVED	
ANGULAR: MACH: ±		ENG APPROVED	
TWO PLACE DECIMAL: ±		MFG APPROVED	
THREE PLACE DECIMAL: ±		Q.A. APPROVED	
INTERFERE GEOMETRIC		COMMENTS:	
TOLERANCING PER:			
MATERIAL:			
FINISH:			
DO NOT SCALE DRAWING			

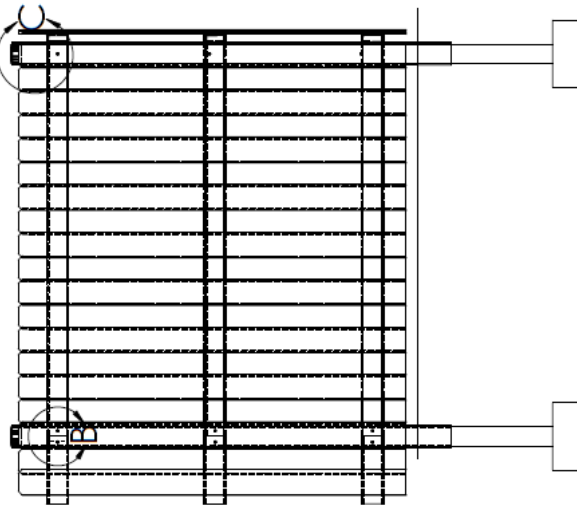
PROFESSIONAL AND CONSTRUCTION	
THE INFORMATION CONTAINED IN THIS DRAWING IS THE SOLE PROPERTY OF THE COMPANY AND IS NOT TO BE REPRODUCED OR TRANSMITTED IN ANY FORM OR BY ANY MEANS, ELECTRONIC OR MECHANICAL, INCLUDING PHOTOCOPYING, RECORDING, OR BY ANY INFORMATION STORAGE AND RETRIEVAL SYSTEM, WITHOUT THE WRITTEN PERMISSION OF THE COMPANY'S PROJECT MANAGER.	
TITLE: Traditional Dogear Bracket Mount	
FENCE 2014:	
SYSTEM 2	
SIZE	IDWG. NO.
B	
REV	C
SHEET 1 OF 1	

4 5/8" Dogear Good Neighbor Shadowbox Face Mount
68 inch Post Center-to-Center

4 5/8" Dogear Good Neighbor Shadowbox Face Mount
68 inch Post Center-to-Center



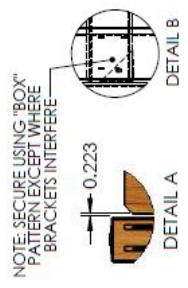
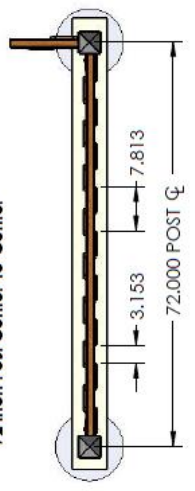
REVISIONS				
ZONE	REV.	DESCRIPTION	DATE	APPROVED
	A	CHANGED SPACING BETWEEN BACKER RAILS TO MATCH FENCE TEMPLATE	2/28/2014	RL
	B	GRAPHIC CHANGES	3/4/2014	RL
	C	GRAPHIC CHANGES	3/25/2014	RL



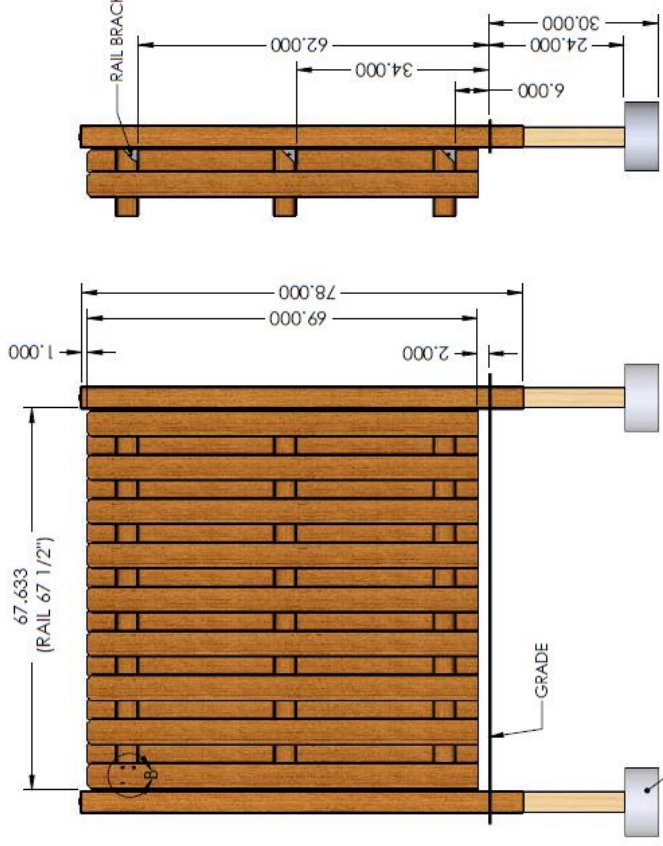
UNLESS OTHERWISE SPECIFIED:		NAME	DATE
DIMENSIONS ARE IN INCHES	FRANCHISES	S. LAPPIN	1/27/14
FRACTIONAL: 1/8	ANGULAR MATCH: 1	DRAWN	
THREE PLACE DECIMAL: 1	INTERPRET GEOMETRIC CONSTRUCTION PER MATERIAL	RED APPROVED	
		ENG APPROVED	
		MFG APPROVED	
		QA APPROVED	
		COMMENTS:	
PROPERTY AND CONFIDENTIAL		TITLE:	
THE INFORMATION CONTAINED HEREIN IS THE PROPERTY OF FIRST COMPOSITE LLC. ANY REPRODUCTION IN PART OR AS A WHOLE WITHOUT THE WRITTEN PERMISSION OF FIRST COMPOSITE LLC IS PROHIBITED.		Dogear Good Neighbor Shadowbox Face Mount System 5	
SIZE		DWG. NO.	REV
B			C
SCALE: Varies		WEIGHT:	
		SHEET 1 OF 1	

NOTE: STANDARD SHADOWBOX HAS 17 PICKETS PER 6 FT RUN, 9 PICKETS IN THE BACK ROW, 8 IN THE FRONT. MAY VARY WITH SPACING. RECOMMEND COVERING ALL CROSS RAIL SEAMS WITH PICKETS FOR BEST APPEARANCE.

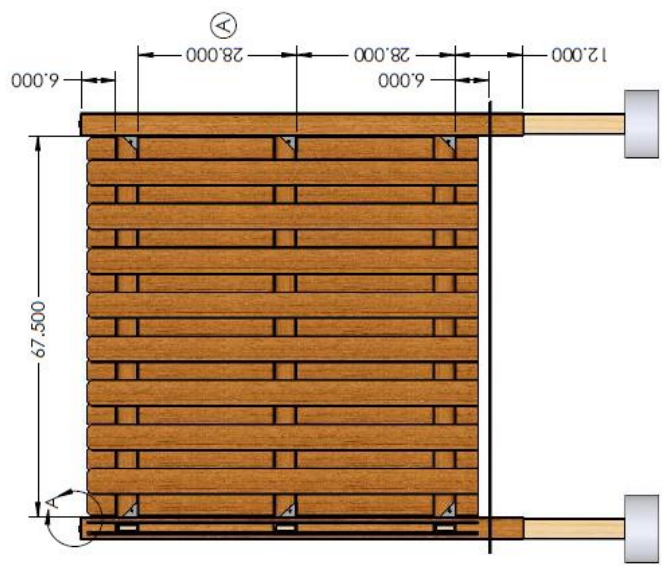
4 5/8" Dogear Good Neighbor Shadowbox Bracket Mount
72 inch Post Center-to-Center



NOTE: SECURE USING "BOX" PATTERN EXCEPT WHERE BRACKETS INTERFERE



4 5/8" Dogear Good Neighbor Shadowbox Bracket Mount
72 inch Post Center-to-Center



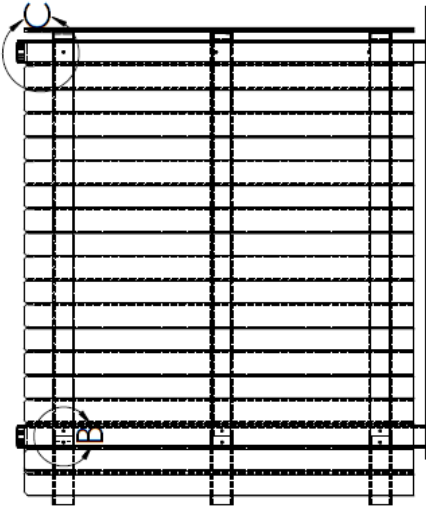
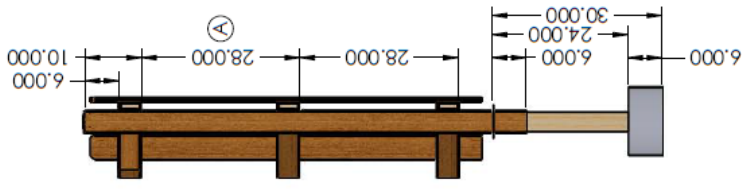
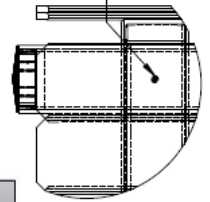
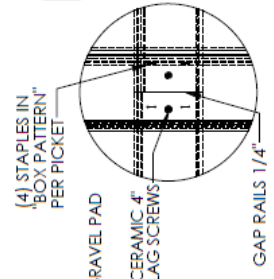
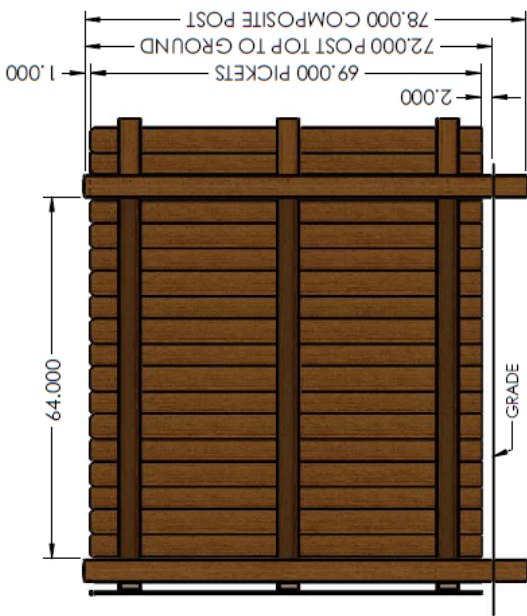
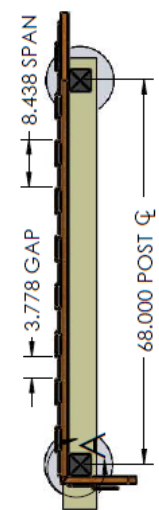
NOTE: STANDARD SHADOWBOX IS 17 PICKET, 9 ON THE FRONT, 8 ON THE BACK. TO REDUCE SPACING AND TIGHTEN VIEW, ADD PICKETS AS DESIRED (9/9, 10/9, OR 10/10).

ZONE	REV.	DESCRIPTION	DATE	APPROVED
	A	CORRECTED RAIL LOCATIONS TO MATCH INSTALLATION TEMPLATE	2/26/2014	RL
	B	GRAPHIC CHANGES	3/20/2014	RL
	C	GRAPHIC CHANGES	3/25/2014	RL

UNLESS OTHERWISE SPECIFIED: DIMENSIONS ARE IN INCHES FRACTIONAL: 1/16, 1/8, 3/16, 1/4, 3/8, 1/2, 5/8, 3/4, 7/8, 1 DECIMAL: 0.1, 0.2, 0.3, 0.5, 1.0, 1.5, 2.0, 3.0, 4.0, 5.0, 6.0, 8.0, 10.0 THREE PLACE DECIMAL: 0.125, 0.250, 0.375, 0.500, 0.625, 0.750, 0.875, 1.000, 1.125, 1.250, 1.375, 1.500, 1.625, 1.750, 1.875, 2.000, 2.125, 2.250, 2.375, 2.500, 2.625, 2.750, 2.875, 3.000, 3.125, 3.250, 3.375, 3.500, 3.625, 3.750, 3.875, 4.000, 4.125, 4.250, 4.375, 4.500, 4.625, 4.750, 4.875, 5.000, 5.125, 5.250, 5.375, 5.500, 5.625, 5.750, 5.875, 6.000, 6.125, 6.250, 6.375, 6.500, 6.625, 6.750, 6.875, 7.000, 7.125, 7.250, 7.375, 7.500, 7.625, 7.750, 7.875, 8.000, 8.125, 8.250, 8.375, 8.500, 8.625, 8.750, 8.875, 9.000, 9.125, 9.250, 9.375, 9.500, 9.625, 9.750, 9.875, 10.000		NAME	DATE
DRAWN	1/14/14		
RED APPROVED			
ENG APPROVED			
MFG APPROVED			
Q.A. APPROVED			
COMMENTS:			
PROPERTY AND CONFIDENTIALITY NOTICE: THE INFORMATION CONTAINED HEREIN IS THE PROPERTY OF HERRICK COMPANY, LLC. AND IS PROVIDED IN CONFIDENCE. IT IS NOT TO BE REPRODUCED OR TRANSMITTED IN ANY FORM OR BY ANY MEANS, ELECTRONIC OR MECHANICAL, INCLUDING PHOTOCOPYING, RECORDING, OR BY ANY INFORMATION STORAGE AND RETRIEVAL SYSTEM, WITHOUT THE WRITTEN PERMISSION OF HERRICK COMPANY, LLC.	TITLE: Dogear Good Neighbor Shadowbox Bracket Mount SYSTEM 6		
SIZE	DWG. NO.	REV	C
B			
SCALE VARIES	WEIGHT:	SHEET 1 OF 1	

4 5/8" Dogear Board on Board Face Mount
Privacy 68 inch Post Centers-to-Center

4 5/8" Dogear Board on Board Face Mount
Privacy 68 inch Post Centers-to-Center

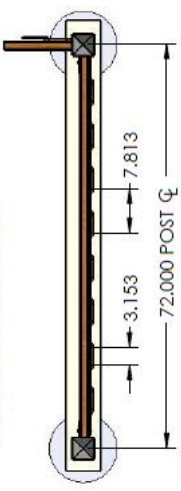


REVISIONS				
ZONE	REV.	DESCRIPTION	DATE	APPROVED
	A	CHANGED SPACING BETWEEN BACKER RAILS TO MATCH FENCE TEMPLATE	2/28/2014	RL
	B	GRAPHIC CHANGES	3/4/2014	RL
	C	GRAPHIC CHANGES	3/25/2014	RL

UNLESS OTHERWISE SPECIFIED: DIMENSIONS ARE IN INCHES FRACTIONAL 1/8 ANGULAR: MACH: BEND 2 TWO PLACE DECIMAL 1 THREE PLACE DECIMAL 1 INTERFERE GEOMETRIC TOLERANCING PER MATERIAL FINISH		NAME B LAPPIN	DATE 1/27/14	PROPERTY AND CONFIDENTIAL INFORMATION. ANY REPRODUCTION OR DISSEMINATION OF THIS DRAWING WITHOUT THE WRITTEN PERMISSION OF P&S COMPOSITES LLC IS PROHIBITED.
DRAWN		FIELD APPROVED	TITLE: Dogear Board on Board Privacy Face Mount System 9	
ENG APPROVED		MFG APPROVED		FEINCE 2014
QA APPROVED		COMMENTS:		SIZE DWG. NO. B
DO NOT SCALE DRAWING		SCALE: VARIES/WEIGHT:		REV C
				SHEET 1 OF 1

NOTE: STANDARD BOARD ON BOARD HAS 17 PICKETS PER 6 FT RUN, 9 PICKETS IN THE BACK ROW, 8 IN THE FRONT - BOTH ROWS ON THE SAME SIDE OF THE CROSS RAILS. MAY VARY WITH SPACING. RECOMMEND COVERING ALL CROSS RAILS SEAMS WITH PICKETS FOR BEST APPEARANCE.

**4 5/8" Dogear Board on Board Privacy Bracket Mount
72 inch Post Center-to-Center**



NOTE: SECURE USING "BOX" PATTERN EXCEPT WHERE BRACKETS INTERFERE

