



Parts Manual

Mfg. No: 1687915-00
SXD19PWM82K, 82V Battery Electric



Model Components	Page
Battery & Cover Group.....	4
Handles Group.....	8
Wheels & Deck Group.....	12
Torque Specification Chart.....	14

Not For
Reproduction

Battery & Cover Group

REF NO	PART NO	QTY	DESCRIPTION
9	771427	1	KIT, REAR COVER ASSEMBLY
9-1		1	REAR COVER
9-2		1	AXLE
9-3		1	SPRING
9-4		2	SPLIT WASHER
9-5		1	WARNING LABEL -(Not Shown)
11	771429	1	KIT, REAR BAFFLE
11-1		1	REAR BAFFLE
11-2		1	SCREW
11-3		1	COVER
11-4		1	PLATE
11-5		4	SCREW
12	771430	1	KIT, FRONT BULKHEAD
12-1		1	FRONT BAFFLE
12-2		5	SCREW
13	771431	1	KIT, PLUG
18	771466	1	KIT, FRONT PANEL
18-1		4	SCREW ST4.2-12
18-2		1	BUMPER
18-3		1	BUMPER COVER
18-4		4	SCREW
18-5		1	LABEL
21	771439	1	KIT, BATTERY COVER
21-1		1	BATTERY DOOR
21-2		2	SCREW
21-3		1	SPRING
22	771440	1	KIT, TOP COVER
22-1		1	TOP COVER
22-2		2	MAGNET
22-3		2	SCREW
22-4		4	SCREW
22-5		1	B&S LOGO
22-6		1	LABEL
23	771468	1	KIT, DECORATIVE COVER
23-1		1	TOP COVER
23-2		1	SHROUD
24	771442	1	KIT, RIGHT COVER
24-1		1	RIGHT COVER
24-2		1	RIGHT DECORATIVE COVER
24-3		1	DUST SCREEN
24-4		4	SCREW
25	771443	1	KIT, LEFT COVER
25-1		1	LEFT COVER
25-2		1	LEFT DECORATIVE COVER
25-3		1	DUST SCRREN
25-4		4	SCREW
25-5		5	SCREW
26	771444	1	KIT, RELEASE BUTTON
26-1		1	PIN
26-2		1	SPRING

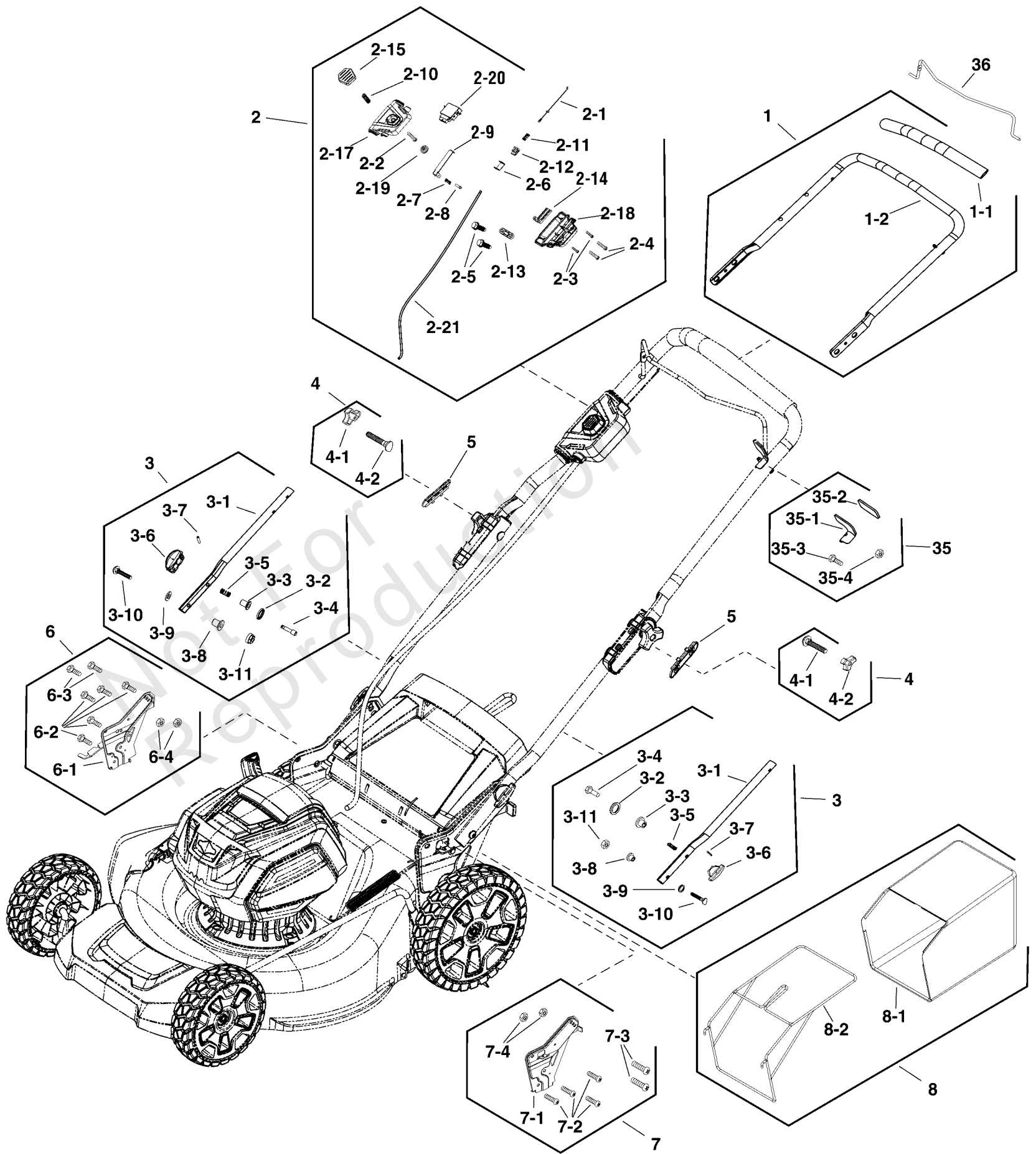
Battery & Cover Group

REF NO	PART NO	QTY	DESCRIPTION
26-3		1	BUTTON
27	771445	1	KIT, BATTERY COMPARTMENT
27-1		1	BATTERY HOUSING
27-2		1	BATTERY TERMINAL
27-3		1	WIRE
27-4		1	WIRE
27-5		1	WIRE
27-7		3	CONTACT
27-8		1	CONNECTOR
27-9		2	SPRING
28	771446	1	KIT, BASE
28-1		1	BASE
28-2		4	SCREW
28-3		1	SEAL
29	771447	1	KIT, PCB, NA
30	771448	1	KIT, MOTOR
30-1		1	MOTOR
30-2		4	NUT
31	771449	1	KIT, MOTOR BASE
31-1		1	MOTOR BASE
31-2		1	TENSION DISC
31-3		2	SCREW
31-4		4	BOLT
31-5		4	NUT
32	771450	1	KIT, BOLT & FAN
32-1		1	FAN
32-2		1	BOLT
33	771451	1	KIT, BLADE
34	771452	1	KIT, COVER, NA
34-1		1	SIDE DISCHARGE COVER
34-2		1	AXLE
34-3		1	BRACKET
34-4		1	SPRING
34-5		2	BOLT
34-7		1	LABEL
37	771455	1	KIT, DEFLECTOR, NA
38	1760266	1	BATTERY, 2AH, NA -(Option)
39	1760265	1	BATTERY, 4AH, NA -(Option)
40	1760263	1	CHARGER, RAPID, NA -(Option)
--	770294	1	REMOTE BELT FOR BATTERY -(Not Shown)

Handles Group

Note: Unless noted otherwise, use the standard torque specifications

Mfg. No: 1687915-00



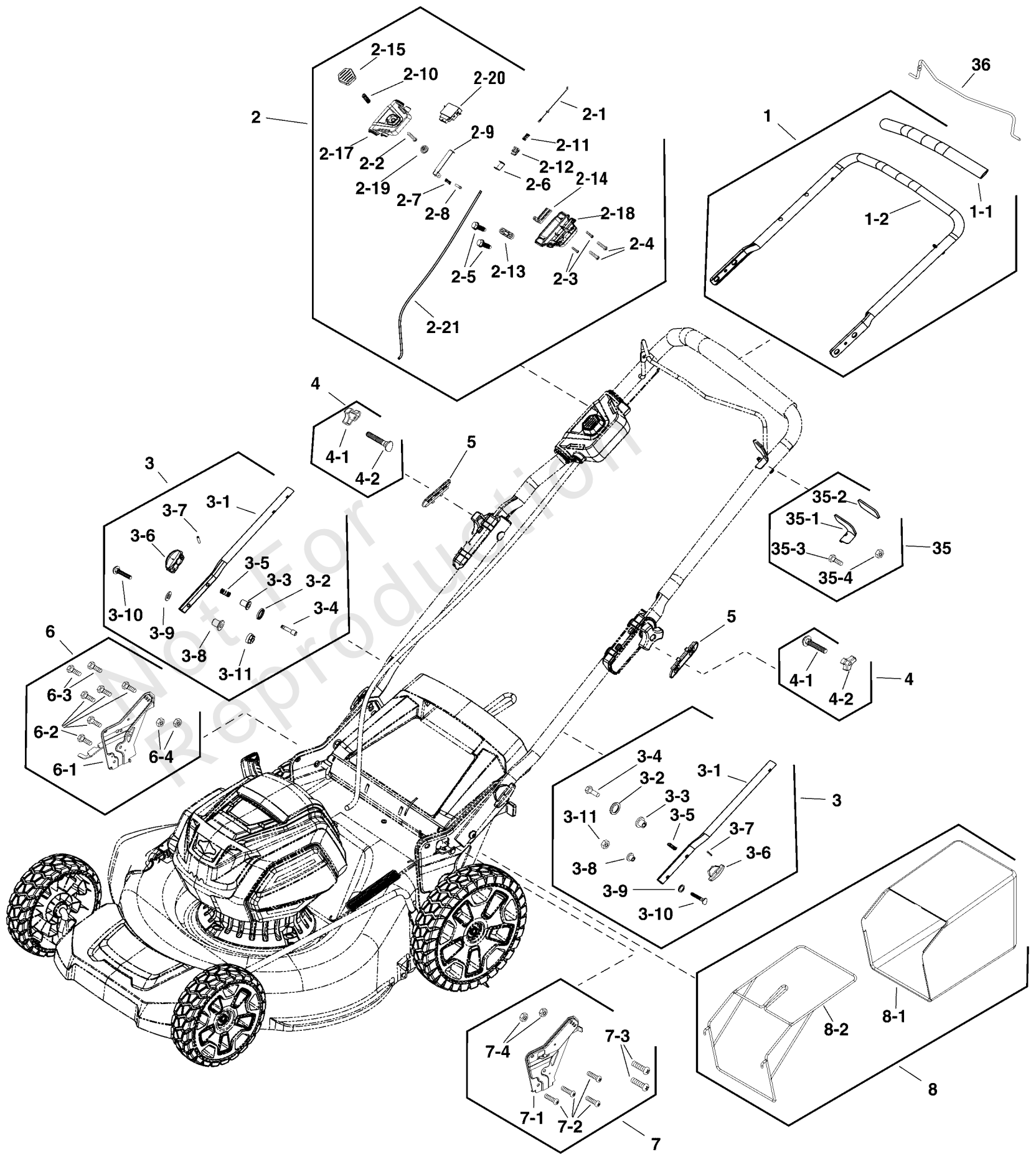
Handles Group

REF NO	PART NO	QTY	DESCRIPTION
1	771419	1	KIT, UPPER HANDLE, NA
1-1		1	SPONGE
1-2		1	UPPER HANDLE
2	771420	1	KIT, SWITCH BOX COMPONENT, NA
2-1		1	CABLE
2-3		2	SCREW
2-4		2	SCREW
2-5		2	SCREW ST4.2-16
2-6		1	SLIDER
2-7		1	AXLE
2-8		1	SPRING
2-9		1	PLATE
2-10		1	SPRING
2-11		1	SPRING
2-12		1	SEAT
2-13		1	CLAMP
2-14		1	SLIDER
2-15		1	BUTTON
2-17		1	SWITCH BOX COVER
2-18		1	SWITCH BOX COVER
2-19		1	COVER
2-20		1	SWITCH
2-21		1	POWER LINE
3	771458	1	KIT, LOWER HANDLE
3-1		1	LOWER HANDLE
3-2		1	GASKET
3-3		1	INSERT
3-4		1	POST
3-5		1	SPRING
3-6		1	KNOB
3-7		1	PIN
3-8		1	BLOCK
3-9		1	FLAT WASHER
3-10		1	BOLT
3-11		1	NUT
4	771422	1	KIT, HARDWARE
4-1		1	KNOB
4-2		1	BOLT
5	771423	1	KIT, SLEEVE
6	771458	1	KIT, LOWER HANDLE
6-1		1	HEIGHT ADJUST, RIGHT
6-2		5	SCREW
6-3		2	BOLT
6-4		2	NUT
7	771425	1	KIT, LEFT BRACKET
7-1		1	HEIGHT ADJUST, LEFT
7-2		4	SCREW
7-3		2	BOLT
7-4		2	NUT
8	771426	1	KIT, GRASS BAGGER
8-1		1	GRASS CATCHING BAG

Handles Group

Note: Unless noted otherwise, use the standard torque specifications

Mfg. No: 1687915-00



Handles Group

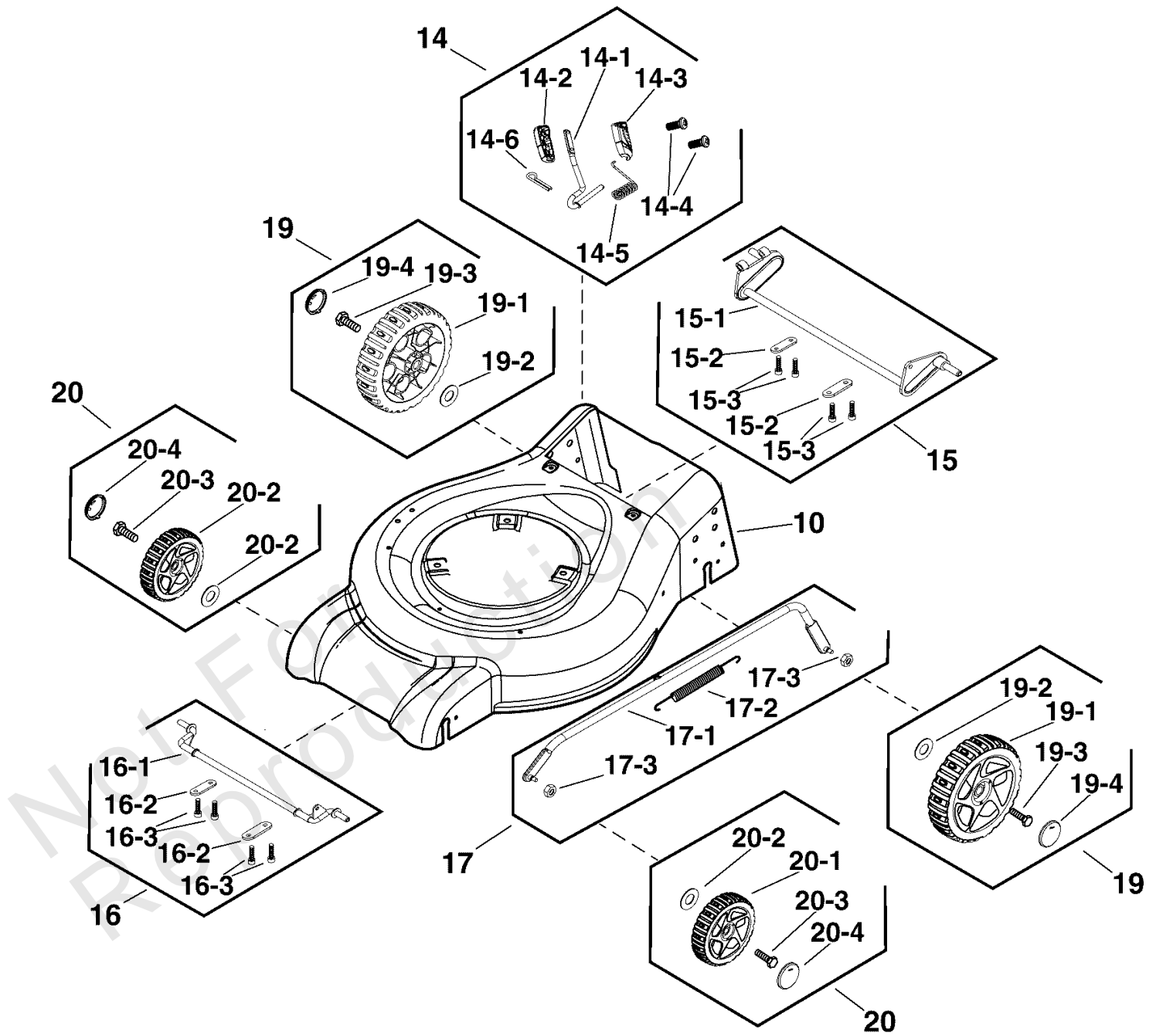
REF NO	PART NO	QTY	DESCRIPTION
8-2		1	FRAME
35	771453	1	KIT, STOP
35-1		1	STOP
35-2		1	SPONGE
35-3		1	BOLT
35-4		1	NUT
36	771454	1	KIT, LEVER

Not For
Reproduction

Wheels & Deck Group

Note: Unless noted otherwise, use the standard torque specifications

Mfg. No: 1687915-00



Wheels & Deck Group

REF NO	PART NO	QTY	DESCRIPTION
10	771428	1	MOWER DECK
14	771432	1	KIT, HEIGHT ADJUST BAR
14-1		1	HEIGHT ADJUSTMENT BAR
14-2		1	LEFT HOUSING
14-3		1	RIGHT HOUSING
14-4		2	SCREW
14-5		1	SPRING
14-6		1	COTTER PIN
15	771433	1	KIT, REAR AXLE
15-1		1	REAR AXLE
15-2		2	TABS
15-3		4	SCREW
16	771434	1	KIT, FRONT AXLE
16-1		1	FRONT AXLE
16-2		2	TABS
16-3		4	SCREW
17	771435	1	KIT, HEIGHT ADJUST ROD
17-1		1	HEIGHT ADJUSTMENT
17-2		1	SPRING
17-3		2	NUT
19	771437	2	KIT, REAR WHEEL
19-1		1	WHEEL
19-2		1	WASHER
19-3		1	BOLT
19-4		1	WHEEL COVER
20	771438	2	KIT, FRONT WHEEL
20-1		1	WHEEL
20-2		1	WASHER
20-3		1	BOLT
20-4		1	WHEEL COVER

Hardware Identification & Torque Specifications

Torque Specification Chart								
FOR STANDARD METRIC MACHINE HARDWARE (Tolerance ± 20%)								
Property Class	5.6		8.8		10.9		12.9	
	Class 5.6		Class 8.8		Class 10.9		Class 12.9	
Size Of Hardware	in/lbs	Nm.	in/lbs	Nm.	in/lbs	Nm.	in/lbs	Nm.
	ft/lbs		ft/lbs		ft/lbs		ft/lbs	
M3	5.88	.56	13.44	1.28	19.2	1.80	22.92	2.15
M4	13.44	1.28	30.72	2.90	43.44	4.10	52.56	4.95
M5	26.4	2.50	60.96	5.75	5.97	8.10	7.15	9.7
M6	44.64	4.3	7.3	9.9	10.3	14	12.1	16.5
M7	5.2	7.1	12.1	16.5	16.9	23	19.9	27
M8	7.7	10.5	17.7	24	25	34	29	40
M10	15	21	35	48	50	67	59	81
M12	26	36	61	83	86.2	117	103	140
M14	42	58	101	132	136	185	162	220
M16	64	88	147	200	210	285	250	340
M18	89	121	202	275	287	390	346	470
M20	126	171	290	390	405	550	486	660
M22	169	230	390	530	559	745	656	890
M24	217	295	497	375	708	960	840	1140
M27	320	435	733	995	1032	1400	1239	1680
M30	435	590	995	1350	1401	1900	1681	2280
M33	590	800	1349	1830	1902	2580	2278	3090
M36	759	1030	1740	2360	2441	3310	2935	3980
M39	988	1340	2249	3050	3163	4290	3798	5150

Torque Specification Chart						
FOR STANDARD MACHINE HARDWARE (Tolerance ± 20%)						
Hardware Grade	No Marks		SAE Grade 5		SAE Grade 8	
	SAE Grade 2		SAE Grade 5		SAE Grade 8	
Size Of Hardware	in/lbs	Nm.	in/lbs	Nm.	in/lbs	Nm.
	ft/lbs		ft/lbs		ft/lbs	
8-32	19	2.1	30	3.4	41	4.6
8-36	20	2.3	31	3.5	43	4.9
10-24	27	3.1	43	4.9	60	6.8
10-32	31	3.5	49	5.5	68	7.7
1/4-20	66	7.6	8	10.9	12	16.3
1/4-28	76	8.6	10	13.6	14	19.0
5/16-18	11	15.0	17	23.1	25	34.0
5/16-24	12	16.3	19	25.8	29	34.0
3/8-16	20	27.2	30	40.8	45	61.2
3/8-24	23	31.3	35	47.6	50	68.0
7/16-14	30	40.8	50	68.0	70	95.2
7/16-20	35	47.6	55	74.8	80	108.8
1/2-13	50	68.0	75	102.0	110	149.6
1/2-20	55	74.8	90	122.4	120	163.2
9/16-12	65	88.4	110	149.6	150	204.0
9/16-18	75	102.0	120	163.2	170	231.2
5/8-11	90	122.4	150	204.0	220	299.2
5/8-18	100	136	180	244.8	240	326.4
3/4-10	160	217.6	260	353.6	386	525.0
3/4-16	180	244.8	300	408.0	420	571.2
7/8-9	140	190.4	400	544.0	600	816.0
7/8-14	155	210.8	440	598.4	660	897.6
1-8	220	299.2	580	788.8	900	1,244.0
1-12	240	326.4	640	870.4	1,000	1,360.0

The guides and ruler furnished below are designed to help you select the appropriate hardware.



Nut, M8

Thread Diameter (mm)

Inside Diameter (in) Threads per inch

Nut, 1/2-16



Screw, M8- 1.25 x 25

Thread Diameter (mm) Distance between threads (mm) Body Length (mm)

Body Diameter Threads per inch Body Length (in)

Screw, 1/2- 16 x 2



Standard Hardware Sizing

When a washer or nut is identified as 1/2" (M8), this is the *Nominal size*, meaning the *inside diameter* is 1/2 inch (8mm metric thread diameter); if a second number is present it represents the *threads per inch* (distance between threads).

When bolt or capscrew is identified as 1/2 - 16 x 2" (M8 - 1.25 x 50), this means the *Nominal size*, or body diameter is 1/2 inch (8mm metric thread diameter), the second number, 16, represents the *threads per inch*, (*distance between threads*). The final number is the body length of the bolt or screw, 2 inches (50mm).

NOTES

- These torque values are to be used for all hardware excluding: locknuts, self-tapping screws, thread forming screws, sheet metal screws and socket head setscrews.
- Recommended seating torque values for locknuts:
 - for prevailing torque locknuts - use 65% of grade 5 torques.
 - for flange whizlock nuts and screws - use 135% of grade 5 torques.
- Unless otherwise noted on assembly drawings, all torque values must meet this specification.

Common Hardware Types

Hex Head Capscrew



Washer



Carriage Bolt



Hex Nut

Wrench & Fastener Size Guide

1/4" Bolt or Nut Wrench—7/16"	5/16" Bolt or Nut Wrench—1/2"	3/8" Bolt or Nut Wrench—9/16"	7/16" Bolt or Nut Wrench (Bolt)—5/8" Wrench (Nut)—11/16"	1/2" Bolt or Nut Wrench—3/4"
M6 Bolt or Nut Wrench—10mm	M8 Bolt or Nut Wrench—13mm	M10 Bolt or Nut Wrench—17mm	M12 Bolt or Nut Wrench—19mm	M14 Bolt or Nut Wrench—22mm

