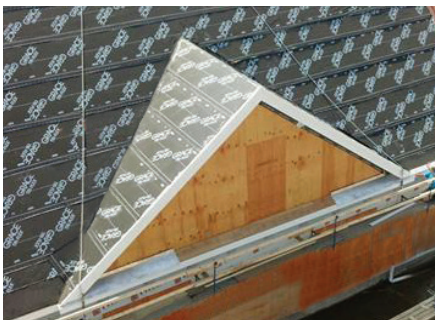


# GRACE SELECT™

Roofing Underlayment

## A Better Alternative to Granulars



Offers higher performance benefits at similar price point



Protects roofs against wind driven rain and ice dams



Backed by Grace- The name that roofing professionals trust

Grace® Select™ smooth surface roofing underlayment is composed of a rubberized asphalt adhesive laminated to a strong slip-resistant film. It meets the industry standards for fastener sealability equivalent to granular products, while it provides fast and easy installation.

*“After using several brands of granular underlayments over the years, I am glad I discovered Grace Select. Select is definitely better than any granular underlayments out there and does a much better job. Since it is lightweight, it is easier to work with. Also, it is made by Grace, which gives me peace of mind that my clients’ roofs are well protected. Overall, I am very satisfied with Grace Select.”*

— Mario Sousa, Caliber Construction

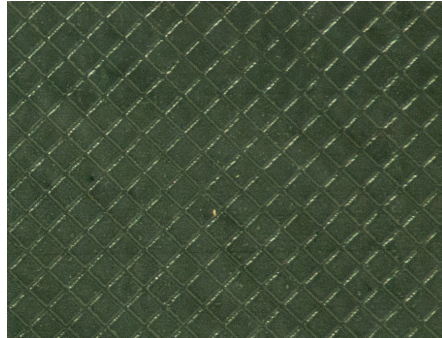


# Why **GRACE**<sup>®</sup> **SELECT**<sup>™</sup> Roofing Underlayment?

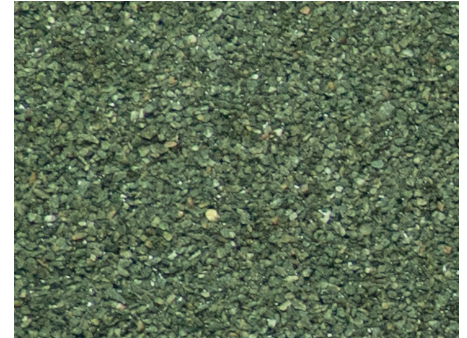


Developed  
by Grace<sup>®</sup>

the recognized  
leader in  
self-adhered  
roofing  
underlayments  
and the  
manufacturer  
of Grace Ice &  
Water Shield<sup>®</sup>



**GRACE SELECT**<sup>™</sup>



**GRANULARS**

**Light weight**—  
Great performance with minimal weight  
*Fast and easy installation*

**Double weight**—  
Difficult to handle during  
installation

**Superior lap adhesion**—  
Better protection against leaks  
*Job done well the first time*

**Granular surface may  
inhibit watertight laps**—  
May require special treatment  
of the laps

**Re-roofable**—  
Shingles can be easily removed from  
existing Select underlayment during  
re-roofing  
*Easier & less costly retrofit applications*

**Not re-roofable**—  
Shingles cannot be easily removed  
from the existing granular underlay-  
ment when re-roofing; more difficult  
& costly retrofit jobs

**Higher adhesive content; no fillers**—  
Strong defense against wind-driven  
rain and ice dams  
*Protection against costly call backs*

**Lower adhesive  
and higher filler  
content is typical**

**Proprietary film surface**—  
Superior foot traction without loose  
granules; scuff free surface  
*Safe & Clean Installation*

**Granular surface**—  
Loose granules may cause slip  
hazards; may be vulnerable to  
scuffing in hot weather

Roll Weight	32 lbs.
Roll Size	195 ft <sup>2</sup>
Roll Length	65 ft.
Roll Width	36 in.

[www.graceresidential.com](http://www.graceresidential.com)

**For additional information on Grace's Residential Waterproofing,  
call: 1-866-333-3SBM**

GRACE<sup>®</sup> and Ice & Water Shield<sup>®</sup> are trademarks, registered in the United States and/or other countries, of W. R. Grace & Co.-Conn. GRACE Select<sup>™</sup> is a trademark of W. R. Grace & Co.-Conn. This trademark list has been compiled using available published information as of the publication date of this brochure and may not accurately reflect current trademark ownership or status. Grace Construction Products is a business segment of W. R. Grace & Co.-Conn.

We hope the information here will be helpful. It is based on data and knowledge considered to be true and accurate and is offered for the users' consideration, investigation and verification, but we do not warrant the results to be obtained. Please read all statements, recommendations or suggestions in conjunction with our conditions of sale, which apply to all goods supplied by us. No statement, recommendation or suggestion is intended for any use which would infringe any patent or copyright. W. R. Grace & Co.-Conn., 62 Whittemore Avenue, Cambridge, MA 02140. In Canada, Grace Canada, Inc., 294 Clements Road, West, Ajax, Ontario, Canada L1S 3C6.

© Copyright 2014. W. R. Grace & Co.-Conn. UL-168A Printed in U.S.A. 04/14 GCS/PDF

**GRACE**