



LED ER20-2000e

Part #: EBR20DM/B/7.5W/500/120D/30K/E26/E Bulb Class: R20



Product Description

LED ER20-2000e delivers superior brightness, valuable energy savings, long lasting performance and true color perception. This flood R20 LED bulb is ideal for ambient lighting due to its uniform *soft white light (3000K) replacing conventional 50 Watt incandescent bulbs. Built-in MCOB LED Technology offers exceptional light uniformity, energy efficiency, and optimal heat dissipation guaranteeing durability and constant bulb performance. Enjoy features such as: instant on, dimming options, shatter resistance and mercury free.



Estimated Energy Cost: \$0.90 per year

*Note: Design, features and specifications subject to change without notice. Some features may not be available on all models. For more information regarding dimmer compatibility please visit: www.eurilighting.com or call 1-888-743-5766

MCOB
LED TECHNOLOGY

50W
REPLACEMENT

Specifications

Input Power	Input Voltage	Lumen Output	Beam Angle	CCT	CRI
7.5 W	120 V	500 lm	120°	3000 K	80
Luminous Efficacy	Power Factor	Input Current	Base/Cap	Lamp Lifespan	
73 lm/W	0.7	0.1 A	E26	25,000 Hrs.	

Product Features



Dimmable



Instant-On/Off

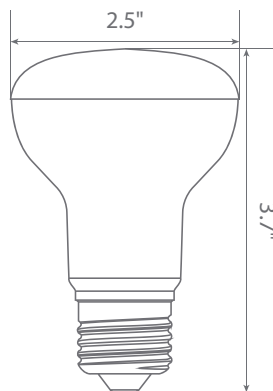


Mercury Free

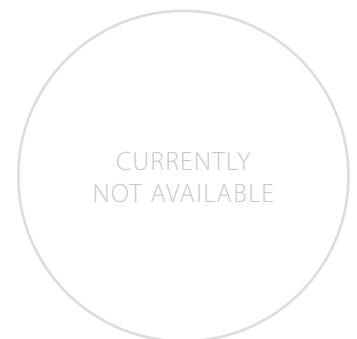


Energy Efficient

Product Dimensions



Product Photometric Data



Euri Lighting | A Division of IRTRONIX Inc.

635 Hawaii Ave. Torrance CA 90503 | Tel: 888.743.5766 | Fax: 310.787.1166 | www.eurilighting.com
©2016 Euri Lighting. All Rights Reserved