



**TRAEGER®**  
WOOD PELLET GRILLS

**Handcrafted Wood Pellet Grills**

# **Pro Pid Digital Thermostat Kit With Meat Probes Installation Manual**



**Step-By-Step Instructions for Installing Digital Thermostat Kits in Traeger Wood Pellet Grills**

**All Models with Digital Controls**

# INTRODUCTION



When you un-box the Digital Thermostat Kit, make sure you have, and can identify all of the following parts:

- (1) Pro Pid Controller With Meat Probes
- (1) 7" RTD - Temperature Sensor Rod
- (1) Screw (1/2" long)
- (1) Lock Nut
- (1) Meat probe 1
- (1) Meat probe 2
- (1) Silicone Grommet
- (4) Wire ties

The easy installation process includes:

- 1) Removing the existing digital control.
- 2) Installing the RTD.
- 3) Wiring and Mounting the Digital Thermostat Control.

Tools required: Phillips screw driver, 11/32 wrench.

	<b>DANGER</b>	
<p><b>Before attempting to remove or install the control for any reason disconnect the power cord from source. Failure to disconnect from power source could result in electrical shock, burn or cause death.</b></p>		

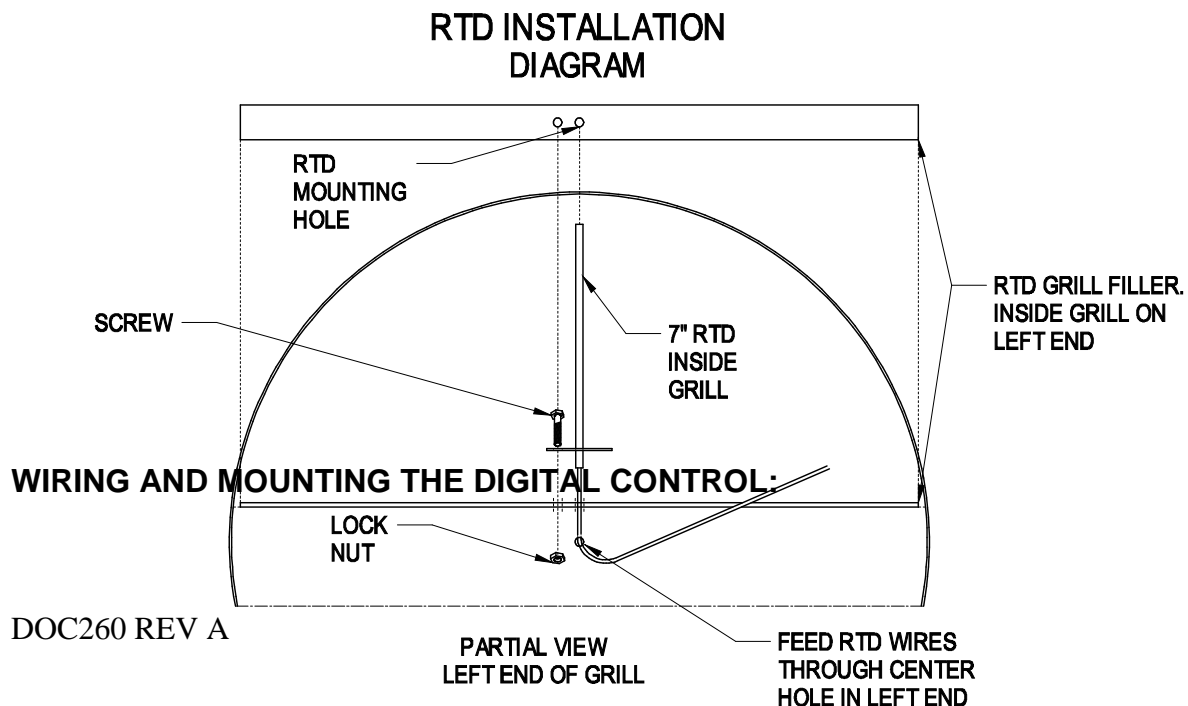
# INSTALLATION INSTRUCTIONS

## REMOVING THE EXISTING SMOKER CONTROL:

- 1) Make sure the Switch/Dial is in the **OFF** position. Disconnect the Power Cord from the electrical outlet.
- 2) Review the Digital Control Wiring Diagram to familiarize yourself with the color coding of the wiring connections. Disconnect the wiring from the Smoker Control by separating the 4 Molex Connectors found on the underside of the Pellet hopper.
- 3) Remove the two screws securing the Smoker Control to the Pellet Hopper. Save these screws as they will be used to mount the Digital Control later.
- 4) Carefully remove the Smoker Control through the opening in the front of the Pellet Hopper. You may need to adjust the angle of the Smoker Control to allow the circuit board to pass through the opening. Save the Smoker Control in case you should have a problem with your Digital Control. It can be reinstalled until the problem with the Digital Control is resolved.

## INSTALLING THE RTD:

- 1) Open the Door and remove the Porcelain Grill and Grease Drain Pan to provide access to the left side of the Grill.
- 2) Carefully cut the cable tie securing the RTD Wires to the RTD. Remove the Screw and Lock Nut from the RTD mounting bracket if they are attached.
- 3) Thread the RTD Wires through the center hole of the RTD Grill Filler and then through the small hole in the left end of the Grill. Continue to feed the RTD wires through the Grill until the lower end of the RTD can be inserted into RTD Grill Filler. On new Grills there will be a "Digital Thermostat RTD Mounting Hole" label pointing to the holes in the RTD Grill Filler. Refer to the RTD Installation Diagram for additional information.
- 4) Mount the RTD to the RTD Grill Filler using the 1/2" long Screw and the Lock Nut as shown in the RTD installation Diagram. Tighten to secure the RTD.
- 5) Run the RTD Wires down through the space between the end of the Grill and the Pellet Hopper. Then feed the Wires up through the opening for the Control.



- 1) Locate the Green Terminal Block on the back of the Digital Control in the upper right corner. Using a small screwdriver, loosen the two screws to open the clamping jaws enough to insert the RTD Wire ends.
- 2) Insert a **bare** wire end on one of the RTD Wires into the clamping jaws on one post of the Terminal Block. Tighten the screw to securely attach the wire. Do not over tighten. Repeat this process on the remaining wire. **The RTD Wires may be connected to the Terminal Block in any combination.**
- 3) Along with the RTD Wires, feed the wiring from the Digital Control into the opening in the Pellet Hopper.
- 4) Carefully insert the Digital Control into the opening in the Pellet Hopper. Again, you may need to adjust the angle of the Digital Control to allow the circuit board to pass through the opening.
- 5) Using the two screws that mounted the Smoker Control, attach the Digital Control to the Pellet Hopper. Do not over tighten the screws.
- 6) Connect the Molex Connectors according to the color coding shown on the Digital Control Wiring Diagram. You may have some excess length for the RTD Wires. This additional wiring can be coiled and secured to the Digital Control Wiring with a cable tie or a twist tie. Make sure that none of the wires interfere with the fan blades on the Draft Inducer Fan or the Auger Drive Motor.

### DIGITAL THERMOSTAT CONTROL WIRING DIAGRAM

