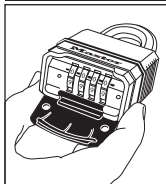
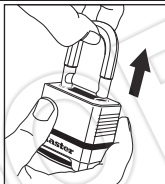


Preset Combination:
 Combinaison pré-réglée :
 Combinación preconfigurada:

TO OPEN FOR THE FIRST TIME



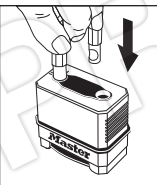
1. Enter the preset combination located at the top of this sheet.



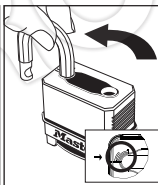
2. Pull shackle open.



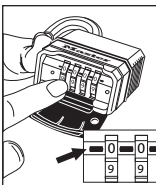
1. OPEN lock and TURN shackle 90°.



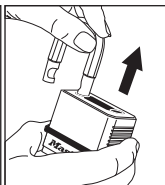
2. PUSH shackle in to lock until it "clicks."



3. TURN shackle another 90°.



4. SET dials at black indicator line to desired combination.



5. PULL shackle UP. VERIFY dials remained set to your combination before locking.

TO LOCK: Close the shackle and **SCRAMBLE THE DIALS.**

TO REOPEN: DIAL your combination and PULL shackle.

TO USE IN LOW LIGHT CONDITIONS

NEW blind dial feature: Rotate dials up until they stop at zero. Next, slowly rotate each dial down while counting the clicks as you dial your combination. Ideal for low light conditions.