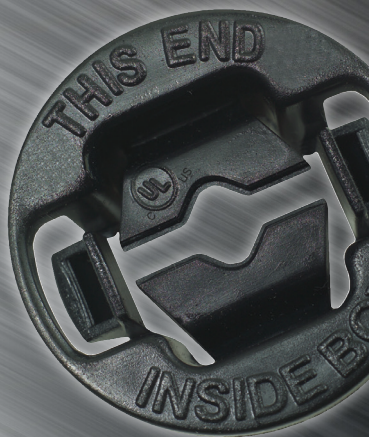




THE INSIDER™

Nonmetallic Sheathed Cable Connector

Accommodates one of the widest
ranges of NMSC combinations
in the industry

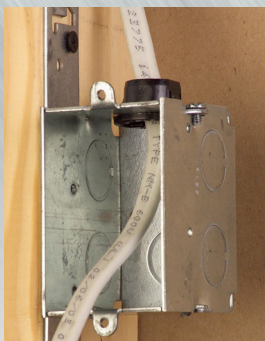
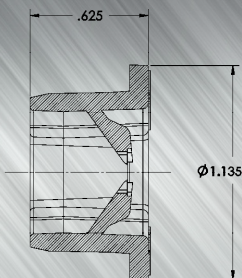


RACO® **TAYMAC®** **BELL®**

THE INSIDER™



c **UL** US LISTED



New Work

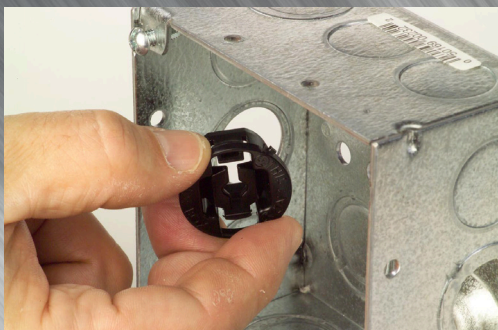


Old Work

Use **THE INSIDER** in dry locations to connect one or two runs of Nonmetallic Sheathed Cable (NMSC) to a box.

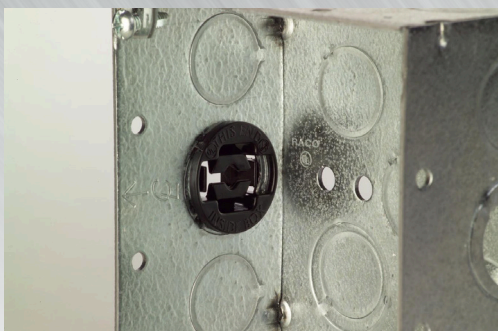
THE INSIDER and NMSC can be used with Steel Boxes, Panel Boxes or Plastic Boxes with knockouts.

SINGLE CABLE	TWO CABLE COMBINATIONS
14-2 with Ground	(2) 14-2's with Ground
14-3 with Ground	(1) 14-2 with Ground & (1) 12-2 with Ground
12-2 with Ground	(1) 14-2 with Ground & (1) 10-2 with Ground
12-3 with Ground	
10-2 with Ground	
10-3 with Ground	



STEP 1: Easy Installation

Remove desired knockout. Insert THE INSIDER into the knockout from the inside of the box.



STEP 2: Done

Catalog Number	Trade Size	Description	Cable Range	Material	Color	Un Cart Qt
4714	1/2"	THE INSIDER™ NMSC Connector	See Chart Above	Thermo-plastic	Black	10

Unit Carton Dimensions: 6-1/4" x 4-1/2" x 4-1/4"

Ship Carton Dimensions: 21-3/8" x 9-3/4" x 7-1/2"





Easy Removal

Push the wing tab of the connector with a screwdriver. Push the connector through the knockout towards the inside of the box.



Large Cable

For two cable installations insert the cables through the connector together or one by one. Ideal for circuit breaker panel use.

Unit Carton Qty.	Ship Carton Qty.	Weight Per 100 Pcs.	I Two of Five Bar Code Unit Carton	I Two of Five Bar Code Ship Carton
100	1000	0.861	3 0050169 04714 0	5 0050169 04714 4

US PATENT 7,211,744

YMAC®

BELL®

PRODUCT FEATURES

Installs from the inside of the box:

The unique design of **THE INSIDER** allows the installer to run the NMSC through the knockout to the desired length before snapping the connector into the knockout. No more need to cut an oversized hole for an old work box and connector installation.

UL listed for use with eccentric knockouts:

THE INSIDER is the only NMSC Connector that has been U.L. tested for use with an eccentric knockout. No need to worry about the unused knockout pulling out.

Accepts single and dual runs of NMSC:

THE INSIDER can accommodate one of the widest ranges of NMSC combinations in the industry. There's no need to stock another connector.

Snap-in design for ½" knockouts:

THE INSIDER locks into the removed knockout securely. No need to waste time with installing locknuts.

One piece nonmetallic construction:

THE INSIDER resists corrosion and offers insulation protection. **THE INSIDER** is made of a tough engineered thermoplastic and conforms to the requirements of UL514B, UL514C and CSA. **THE INSIDER** can be used in exposed and concealed ceilings and walls.

Easy removal:

If you make a mistake, **THE INSIDER** can be removed easily by pushing one of the locking wing tabs with a screwdriver.

Accepts UL Listed Voltage Partition - Cat. No. 981

THE INSIDER™



c  US LISTED



ELECTRICAL PRODUCTS

A Division of Hubbell Incorporated (Delaware)

3902 West Sample St.
South Bend, IN 46619

p 574.234.7151 f 574.234.0625

www.Hubbell-RTB.com