



OMS THD SKU# 1001 767 245

Model # TY337-1611-1

ASSEMBLY INSTRUCTIONS

62in 160 Light LED TINSEL PENGUINS with TREE

USE AND CARE GUIDE

PLANNING ASSEMBLY

Carefully remove all the parts from the box and place them on a flat surface. Please note that many of the parts are connected by the lighting string that runs throughout the item. Remove the parts with care not to damage the lighting string or parts. Read the entire manual prior to assembly and identify all the parts included in the package against the parts list. If any parts are missing or damaged do not attempt assembly. Contact our customer service center or return the item to place of purchase with purchase receipt. Assembly of this product may require more than one person.

Pre-Operation

CAUTION: Grasp the plug to insert or remove from the power source. Do not unplug by pulling on cord.

CAUTION: The lighting string on this product is rated at 9.6 Watts (0.08 Amps). Do not overload. Do not connect to another lighting string, decorative outfit or other electrical products. Before you use or re-use this product, inspect it carefully. Discard or return to place of purchase with purchase receipt if the product has cuts, damage, frayed wire insulation on cords, cracks in the socket enclosures, loose connections or exposed copper wire.

Care and Cleaning

- Carefully remove the product from wherever it is placed. This helps to avoid any undue strain or stress on the product connections and wires. If the product is placed somewhere other than the ground it should be well secured and stable.
- Wipe the unit with a damp cloth and allow the unit to dry before storing.
- Store the product neatly in a cool, dry location protected from sunlight.

Guarantee

What is Covered

The product is intended for residential seasonal use for 90 days per year. This product is covered by a 90 days limited guarantee due to defects in material and workmanship. Return the product with purchase receipts to the location of purchase for refund within 90 days of purchase.

What is Not Covered

This warranty does not cover commercial use, normal wear and tear, products not used in accordance with directions provided on or with the product, burn out of bulbs or LEDs, batteries, products that have been subjected to unauthorized repair and/or modification and damage caused by shipping and improper handling, alterations, misuse or accidents. Questions, problems, missing parts? Before returning to the store, call Home Accents Holiday Customer Service 8 a.m.-6 p.m., EST, Monday-Friday



Thank you!

We appreciate the trust and confidence you have placed in Home Accents through the purchase of this 62in 160 Light LED TINSEL PENGUINS with TREE. We strive to continually create quality products designed to enhance your home. Visit us online to see our full line of products available for your home decoration needs. Thank you for choosing Home Accents!

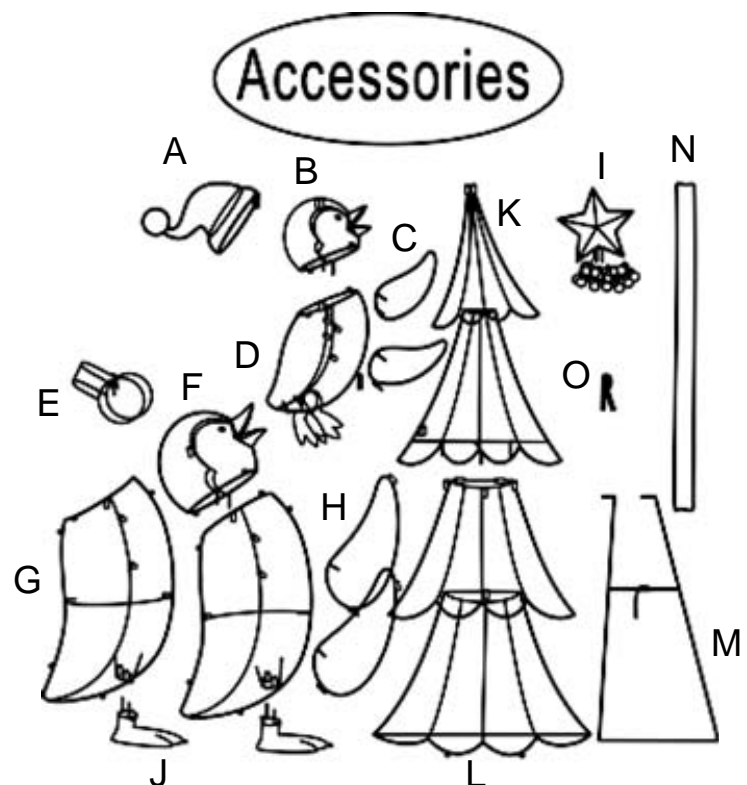
1-877-527-0313

HOMEACCENTSHOLIDAY.COM

Parts List		
Locater	Name	Qty.
A	Hat	1
B	Small Penguin Head	1
C	Small Penguin Arm	2
D	Small Penguin Body/Feet	1
E	Big Penguin Ear Muff	1
F	Big Penguin Head	1
G	Big Penguin Body Halves	2
H	Big Penguin Arm	2
I	Star with lighting string	1
J	Big Penguin Feet	2
K	Upper Section of Tree	1
L	Lower Section of Tree	1
M	Base Stand	1
N	Scarf	2
O	Cotter Pin	1

Hardware List		
Locater	Name	Qty.
P	Ground Stake	6
Q	Plastic Tie	15
R	Spare Fuse	2
S	Spare Bulb	4

Diagram of Parts



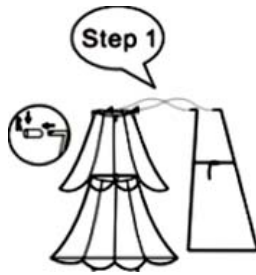
Hardware



ASSEMBLY

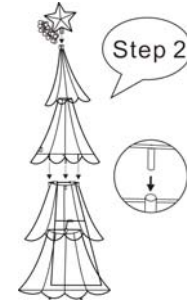
1. Assembling the Lower Section to Base Stand

Insert the connecting rods on the Base Stand (M) into the connecting holes on the Lower Section of Tree and lock with the Cotter Pin (O).



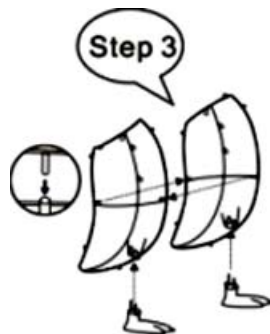
2. Assembling the Upper & Lower Sections of Tree

Insert the connecting rods on the bottom of the Upper Section of Tree (K) into the matching holes on the top of the Lower Section of Tree (L). Fasten the two Sections of Tree with Plastic Ties (Q). Attach the Star with Lighting String (I) to the top of the Upper Section of Tree (K).



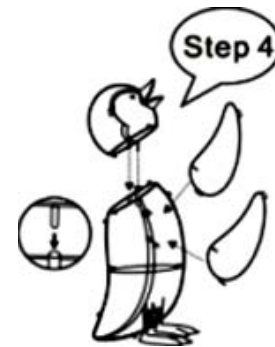
3. Assembling the Big Penguin

Align the connecting rods on the Big Penguin Body Halves (G) with each other and insert the connecting rods on one half into the connecting holes on the other half then fasten with Plastic Ties (Q). Insert the connecting rods on the Big Penguin's Feet (J) into the holes at the bottom of the Big Penguin's Body and fasten them with Plastic Ties (Q).



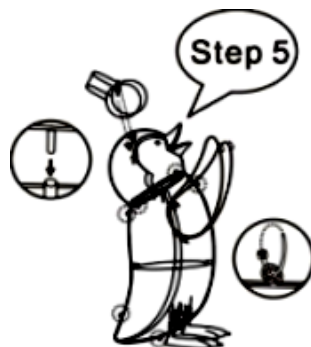
4. Assembling the Arms and Head to the Big Penguin

Insert the connecting rods on the Big Penguin's Arms (H) into the matching holes on the Big Penguin's Body (G). Insert the connecting rods on the Big Penguin's Head (F) into the holes on the top of the Big Penguin's Body and fasten them with Plastic Tie (Q).



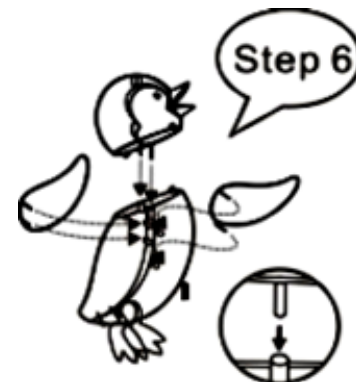
5. Assembling the Ear Muff to the Big Penguin

Insert the connecting rods on the Big Penguin's Ear Muff (E) into the holes on the Big Penguin's Head and fasten them with Plastic Tie (Q).



6. Assembling the Arms and Head to the Small Penguin

Insert the connecting rods on the Small Penguin's Head (B) and Small Penguin's Arms (C) into the matching holes on the Small Penguin's Body/Feet (D) and fasten all parts together with Plastic Tie (Q).



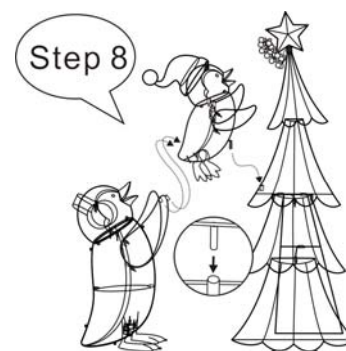
7. Assembling the Hat to the Small Penguin

Insert the connecting rods on the Hat (A) into the holes of the Small Penguin's Head (B).



8. Assembling the Small Penguin to the Big Penguin

Insert the connecting rods at the bottom of the Small Penguin's Body/Feet (D) into the matching holes on the Big Penguin's Arms. Insert the connecting rods on the front of the Small Penguin's Body (D) into the matching holes on the right side of the Upper Section of Tree (K).



9. Attaching the Scarfs, Unwind Lighting String & Secure to Ground

Wrap the Scarfs (N) around the necks of both Penguins. Unwind the Lighting String (I) around the Tree evenly. Secure the Big Penguin and the Tree to the ground with the Ground Stakes (P).

