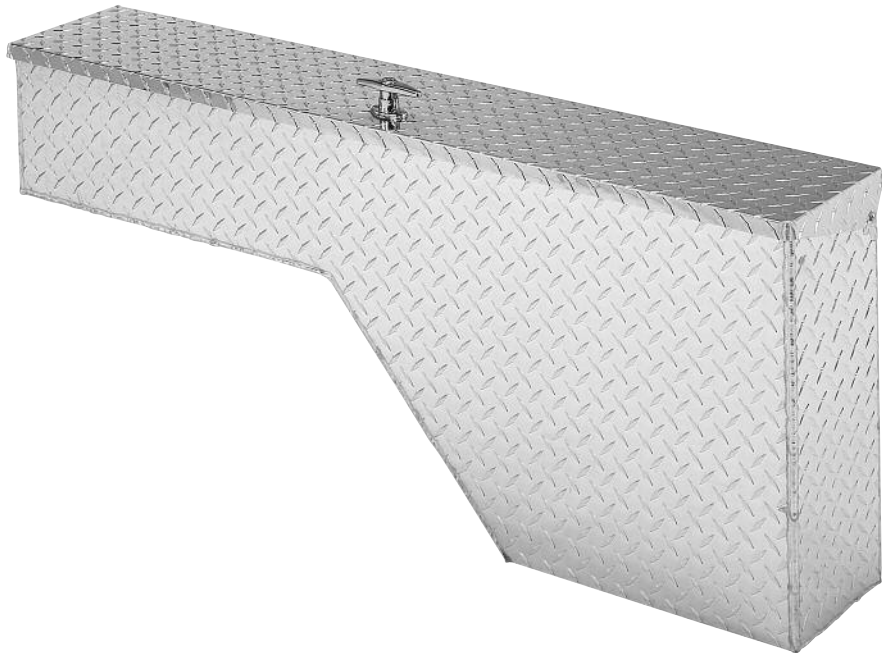
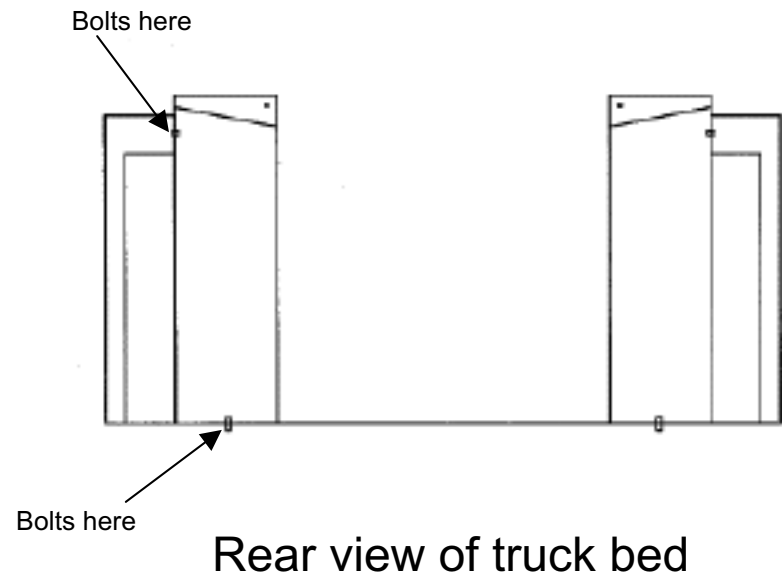


TRADESMAN®

TALFW48/BK
TALFW60/BK
TALFW2/BK

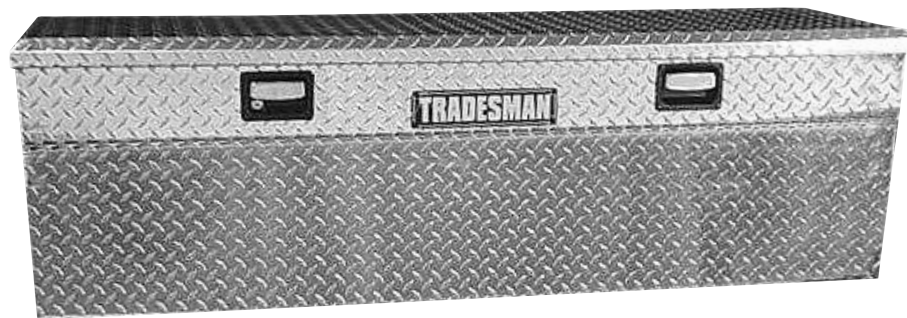


- 1) Locate box in desired position.
- 2) Lid can be reversed for left or right side mounting (see lid reversal instructions).
- 3) Bolt box thru bottom and side to complete installation.

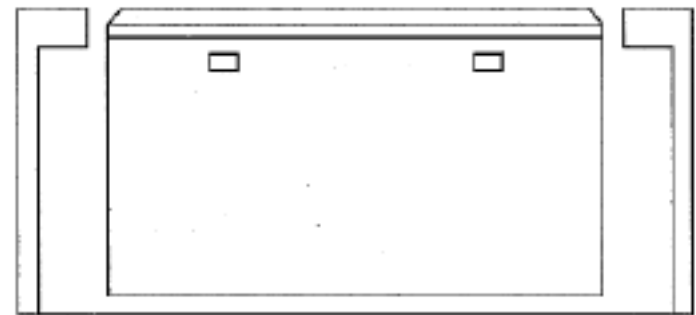




TAWB60SL/BK



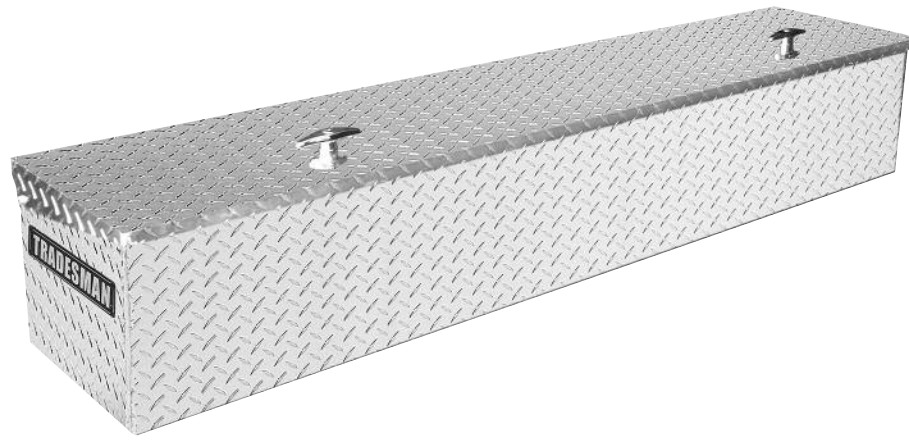
- 1) Locate box in desired position.
- 2) Drill holes in bottom of box and truck bed. (Caution; be sure not to drill into wiring and/or fuel or brake lines.)
- 3) Bolt box to truck bed. (Note: using a small amount of sealer on the bolts will keep out dust and water.)



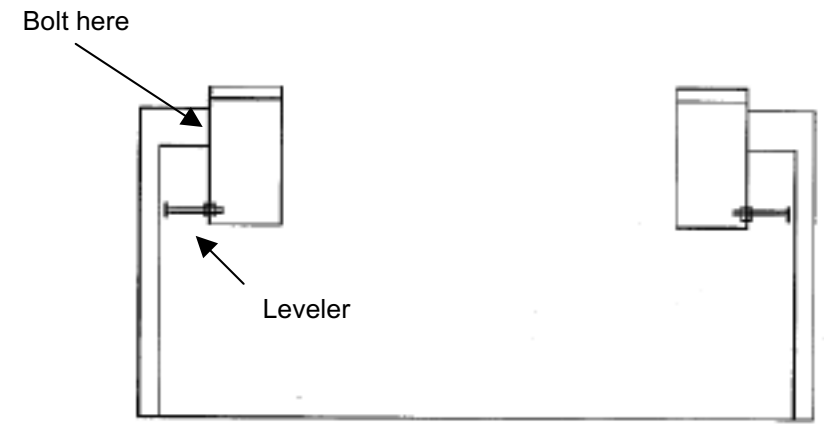
Rear view of truck bed



TALFMSB/BK 48, 60, 70



- 1) Locate box in desired position on left or right side bed rail.
- 2) Bolt box to bed side rail flange.
- 3) Place adjustable support screw (Leveler) in each end of box with non scratch pad toward bed side.
- 4) Adjust screw length to support box.



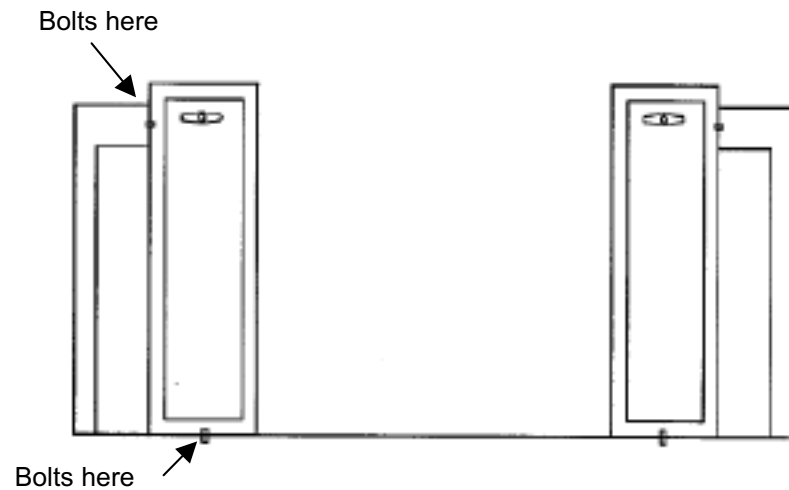
Rear view of truck bed

TRADESMAN[®]

TALFWGB60/BK
TALFWGB53/BK



- 1) Locate box in desired position behind left or right fenderwell, making sure door will open freely.
- 2) Attach front of box with included bracket.
- 3) Attach back of box with bolts and/or screws.

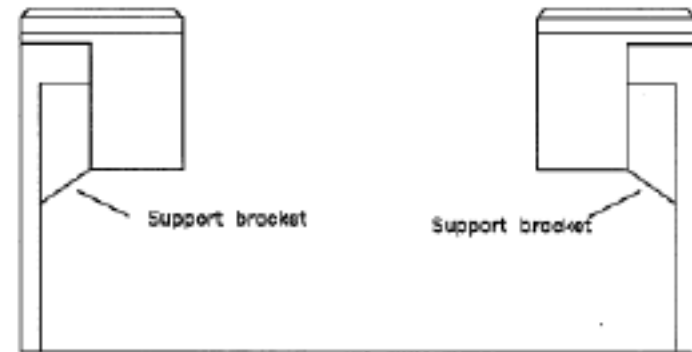


Rear view of truck bed

TRADESMAN®

TAL 480, 600, 700/BK
TST 480, 700/BK

- 1) Locate box on left or right side of bed rail.
- 2) Drill and bolt box to rail.
- 3) Drill and bolt support bracket to box and bed side.



Rear view of truck bed

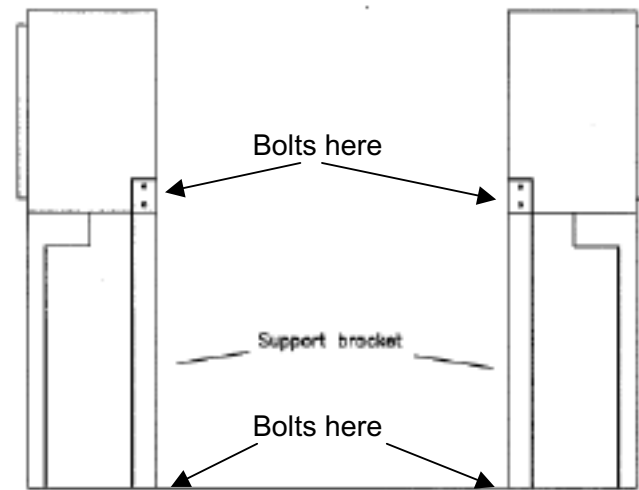
TRADESMAN[®]

TALTM 48, 60, 72, 90, 96

TALPTM 72, 90, 96

TSTM 48, 60, 72, 90

- 1) Locate Top Mount Box in desired position.
- 2) Drill holes in bottom of box and bed side rail. Attach with 3/8" bolts, nuts and washers.
- 3) Locate rear stabilizer bracket (included in the box).
- 4) Attach bracket to back of box and bed floor.

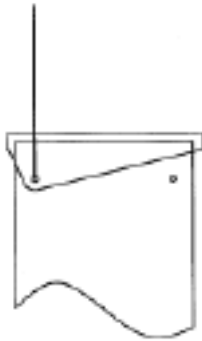


Rear view of truck bed

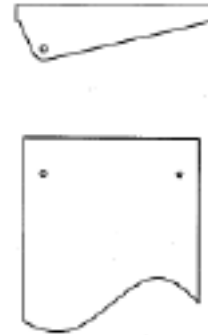
TRADESMAN®

Lid reversal for TALFW48/BK, TALFW60/BK,
and TSTFW2/BK

Step 1
Remove 1/4" bolt, plastic
spacer, and nut from each end
of box

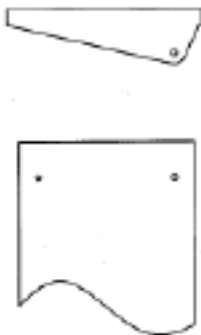


Step 2
Remove Lid



Rear View of Tool Box

Step 3
Reverse lid



Step 4
Replace lid using
existing hardware

