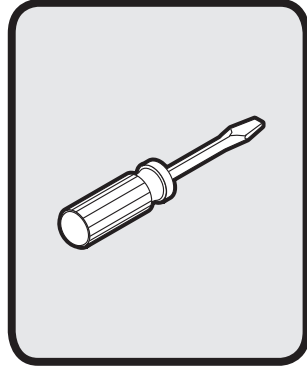
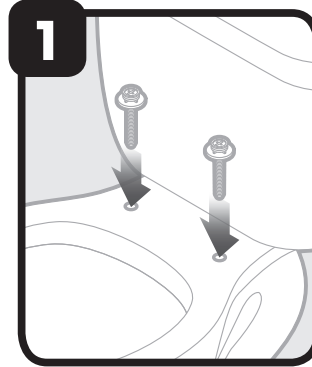


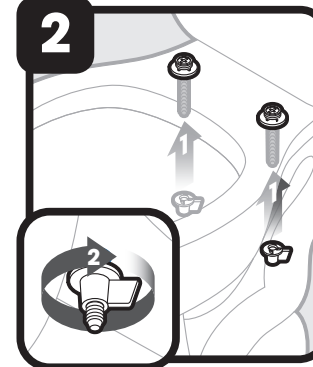
Hardware kit includes
El kit de instalación incluye
Le kit de matériel inclut



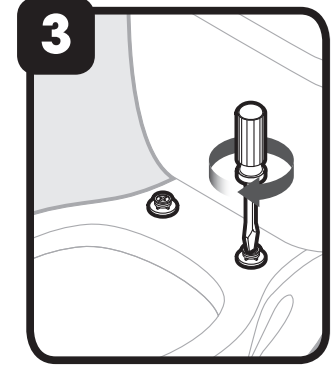
Tools required
Herramientas requeridas
Outils requis



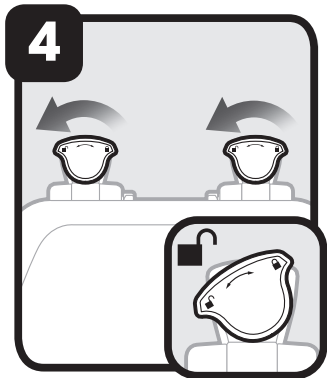
Insert bolts
Inserte los pernos
Insérer les boulons



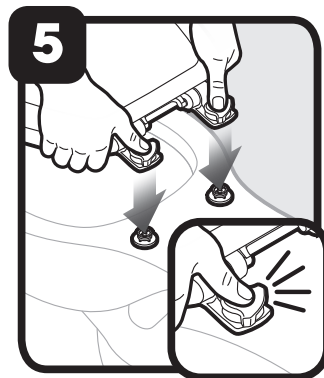
Attach nuts
Coloque las tuercas
Fixer les écrous



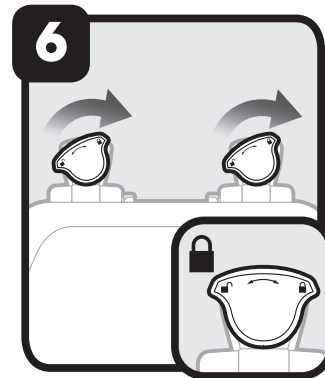
Tighten
Ajuste
Serrez



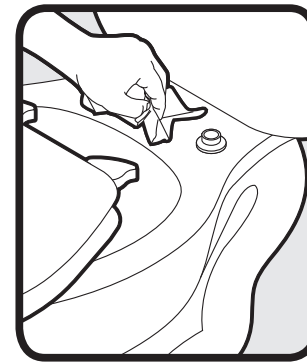
Unlock hinge
Desbloquear bisagra
Déverrouillez la charnière



Hold in unlock position and
snap in place
Mantenga en posición abierta
e inserte en su lugar
Laissez à la position non-ver-
rouillée et faites pression



Lock hinge
Bloquear bisagra
Verrouillez la charnière



For easy cleaning and replacement,
reference steps 4, 5 and 6
Para una fácil limpieza y reemplazo,
siga los pasos 4, 5 y 6
Pour un nettoyage et un remplacement
facile, veuillez vous référer aux étapes 4, 5,
et 6