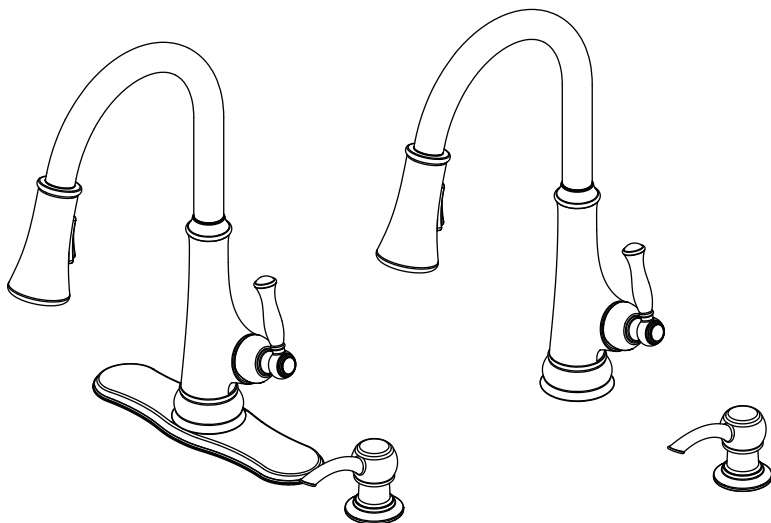


INSTALLATION AND CARE GUIDE

PULL-DOWN KITCHEN FAUCET



Questions, problems, missing parts?

Before returning to the store, call Glacier Bay Customer Service

8 a.m. - 7 p.m., EST, Monday - Friday

9 a.m. - 6 p.m., EST, Saturday

1-855-HD-GLACIER (1-855-434-5224)

HOMEDEPOT.COM/GLACIERBAY

THANK YOU

We appreciate the trust and confidence you have placed in Glacier Bay through the purchase of this kitchen faucet. We strive to continually create quality products designed to enhance your home. Visit us online to see our full line of products available for your home improvement needs. Thank you for choosing Glacier Bay!

Table of Contents

Important Information	2	Installation	4
Warranty	2	Operation	14
Pre-Installation	2	Care and Cleaning	15
Planning Installation	2	Troubleshooting	16
Tools and Hardware Required	2	Service Parts.....	18
Package Contents	3		

Important Information

- Observe all local plumbing and building codes.
- Cover the sink drain to avoid losing any parts.
- Review the care and cleaning section included in this guide.

Warranty

LIMITED LIFETIME WARRANTY

Glacier Bay products are manufactured with superior quality standards and workmanship and are backed by our limited lifetime warranty. Glacier Bay products are warranted to the original consumer purchaser to be free of defects in materials or workmanship. We will replace FREE OF CHARGE any product or parts that prove defective. Sensor mechanism and LED light excluded from Limited Lifetime Warranty and are covered by a 3-year warranty from date of purchase. Simply, return the product / part to any of The Home Depot retail locations or call 1-855-HD-GLACIER (1-855-434-5224) to receive the replacement item. Proof of purchase (original sales receipt) from the original consumer purchaser must be made available for all Glacier Bay warranty claims.

This warranty excludes incidental/inconsequential damages and failures due to misuse, abuse or normal wear and tear. This warranty excludes all industrial, commercial & business usage, whose purchasers are hereby, extended a five year limited warranty from the date of purchase, with all other terms of this warranty applying except the duration of warranty.

Some states and provinces do not allow the exclusion or limitation of incidental or consequential damages, so the above limitations may not apply to you. This warranty gives you specific legal rights and you may also have other rights that vary from state to state and province to province. Please see a store or contact 1-855-HD-GLACIER for more details.

Pre-Installation

PLANNING INSTALLATION

Before beginning the installation of this product, ensure all parts are present. Compare parts with the Package Contents list. If any part is missing or damaged, do not attempt to install the product. Contact customer service for replacement parts.

TOOLS AND HARDWARE REQUIRED



Adjustable wrench



Safety goggles



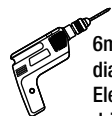
⊕ Phillips screwdriver



Silicone sealant



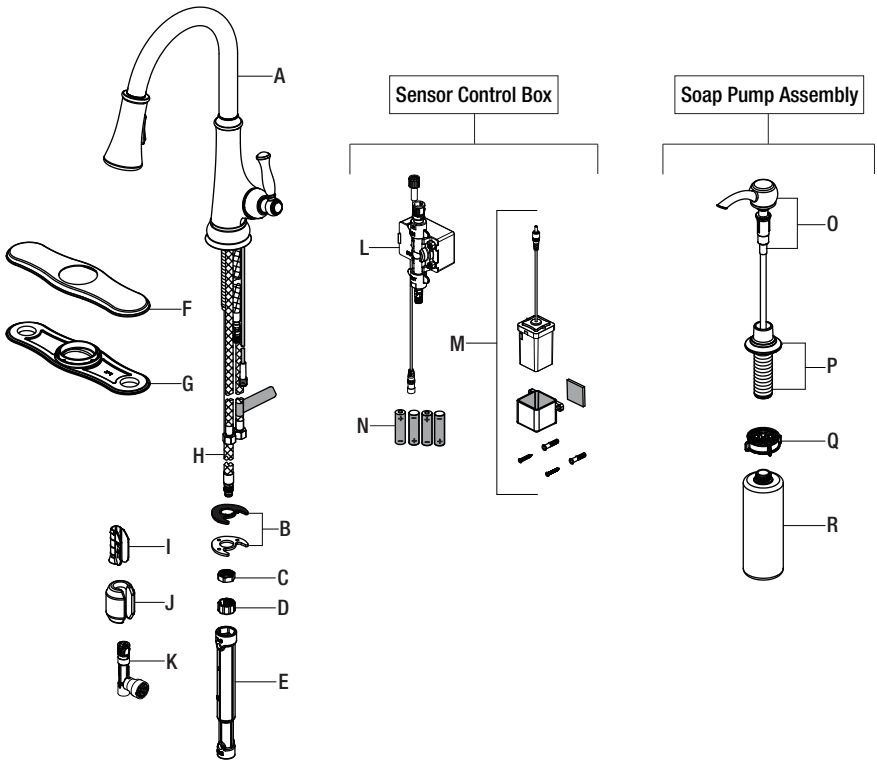
Channel lock pliers



6mm diameter Electric drill

Pre-Installation (continued)

PACKAGE CONTENTS



Part	Description	Quantity
A	Faucet body	1
B	Washer	2
C	Nut	1
D	Protective cap	1
E	Wrench	1
F	Escutcheon	1
G	Gasket	1
H	Hose	1
I	Weight clip	1
J	Weight	1

Part	Description	Quantity
K	Quick connect assembly	1
L	Sensor control box	1
M	Battery pack	1
N	"AA" Battery	4
O	Soap pump	1
P	Soap assembly	1
Q	Soap dispenser mounting nut	1
R	Soap bottle	1

Installation

1 Installing the faucet assembly



CAUTION: Always turn off the water supply before removing an existing faucet or replacing any part of a faucet. Open the faucet handle to relieve water pressure and ensure that the water is completely shut off.

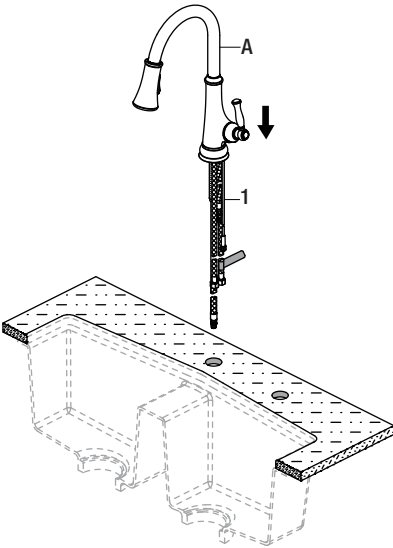
- Shut off the water supply. Remove the old faucet. Clean the mounting surface.

1a



NOTE: This step is for no escutcheon installation (optional).

- Install the faucet body (A)-including supply hoses and sensor cable (1)-through the hole in the sink.

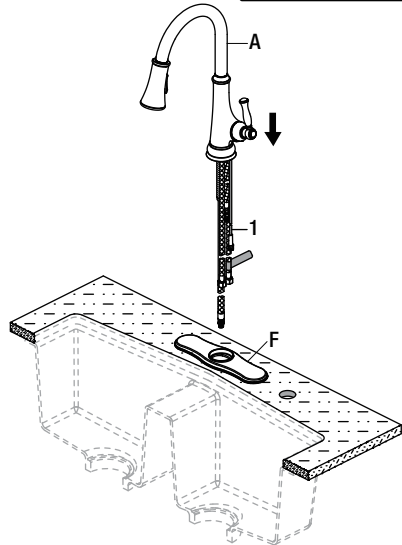
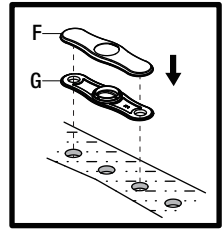


1b



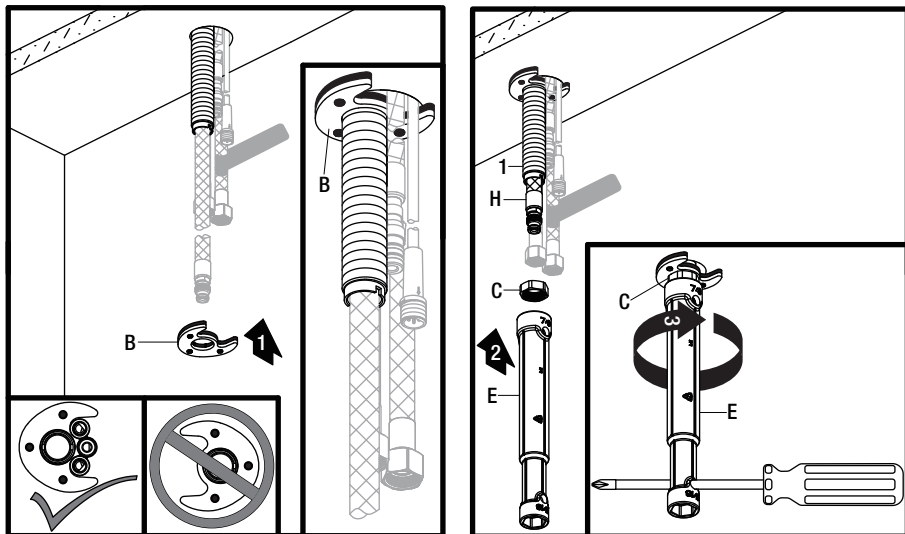
NOTE: This step is for escutcheon installation (optional). If the sink is uneven, use silicone under the gasket (G).

- Place the escutcheon (F) and gasket (G) on the holes in the sink.
- Install the faucet body (A)-including supply hoses and sensor cable (1)-through the hole in the escutcheon (F).



2 Securing the faucet assembly

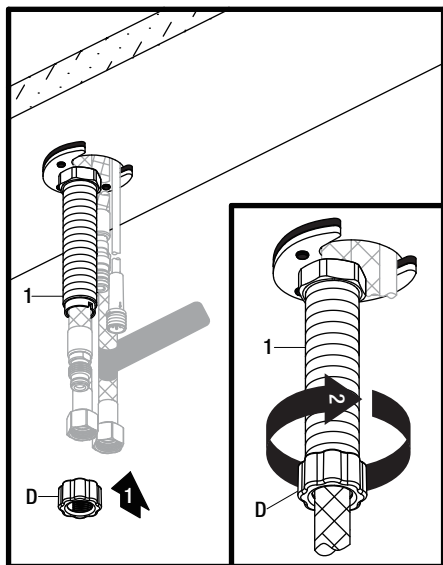
- Install the washers (B) onto the threaded shank.
- Push the hose (H) up through the faucet body until the end of the hose is flush with the bottom on the shank (1) so it's out of the way for the next step.
- Thread the mounting nut (C) onto the shank using the wrench (E) provided to tighten firmly.



Installation (continued)

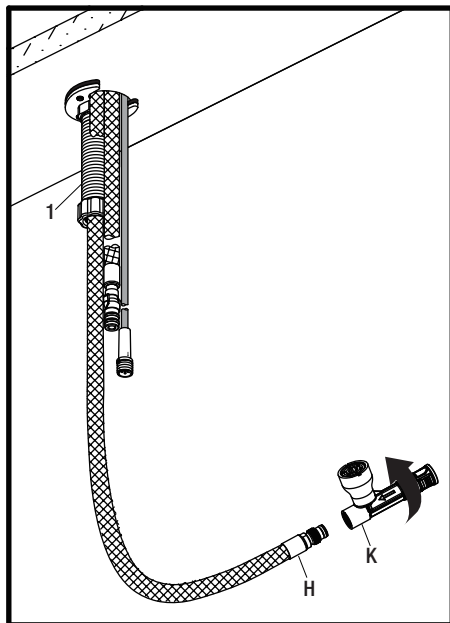
3 Installing the protective cap

- Screw the protective cap (D) onto the threaded mounting shank (1).



4 Attaching the quick connector to the hose

- Pull out the hose (H) from the threaded mounting shank (1).
- Attach the quick connector (K) by screwing it onto the threaded end of the hose (H) in a clockwise motion. Hand tighten only.



5 Installing the sensor cable

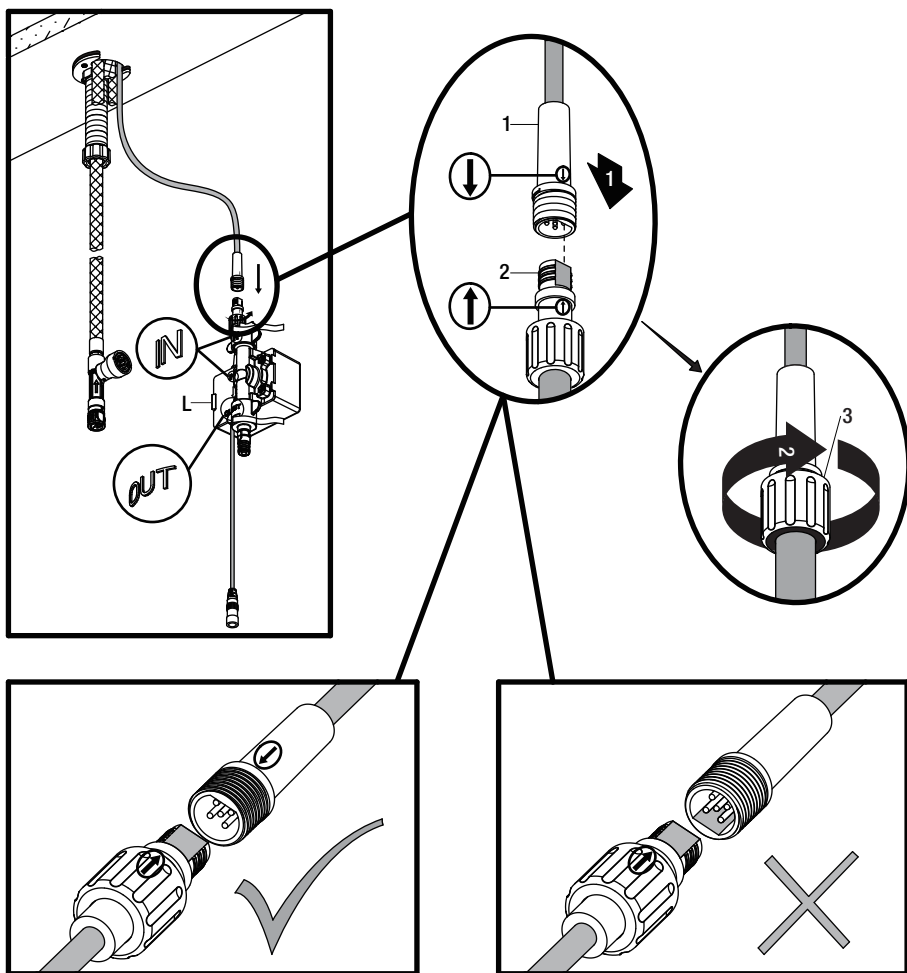


NOTE: The side of the control box (L) with "in" and "out" showing must face the front of the cabinet (away from the back of the cabinet).

- Install the data cable (1) to the control box connection (2). Ensure the arrows on the data cable and control box connection are aligned to one another to ensure proper installation. Ensure they are tightly connected by firmly pushing together.
- Secure the connection by hand tightening the nut (3) in a clockwise direction onto the threaded sensor cable.



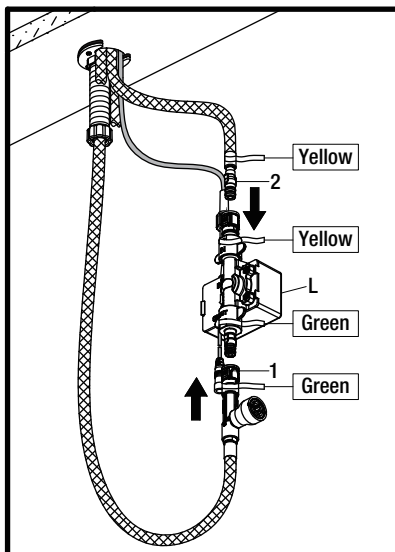
CAUTION: If the connections are not made properly, the sensor feature will not work.



6 Attaching the quick connector to the receiving block

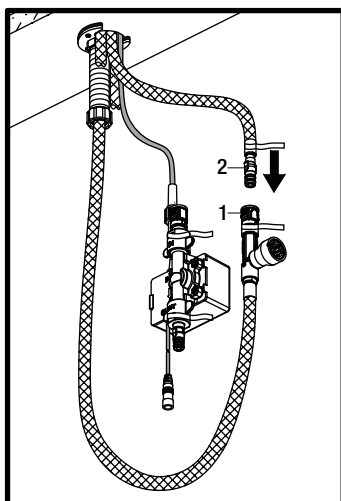
- Connect the hose with the yellow tag to the hose on the control box (L) with a matching yellow tag. Push firmly together until they snap into place. As shown in the Fig 1.
- Connect the hose with the green tag to the hose on the control box (L) with a matching green tag. Push firmly together until they snap into place. As shown in the Fig 1.

Fig 1



- **OPTIONAL:** If you want to use the faucet without the sensor feature or without power, you can attach the quick connector (1) to the receiving block (2). This bypasses the sensor feature and enables the faucet to work by operating the handle. As shown in the Fig 2.

Fig 2



7 Installing the batteries



NOTE: This step is for batteries installation (optional). If the batteries will not be used, install as described in step 10.

- To open the battery housing, squeeze the sides while pulling the cover (1). DO NOT pull on the wire. See figure 1.
- Install the four AA batteries (N) included by matching the positive (+) and Negative (-) ends on the battery (N) to the (+) and (-) markings in the battery pack (M). The negative ends of the battery (N) should always connect to the spring end of the battery slots in the battery pack (M). See figure 2.
- Reinstall the battery pack cover (1) by pushing up and snapping into place. See figure 3.



NOTE: When the sensor flashes 10 times continuously and slowly, the batteries have lost their charge. Replace the batteries (N).

Figure 1

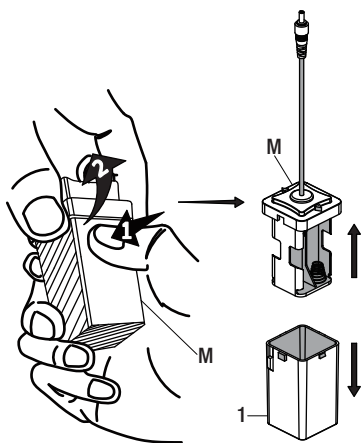


Figure 2

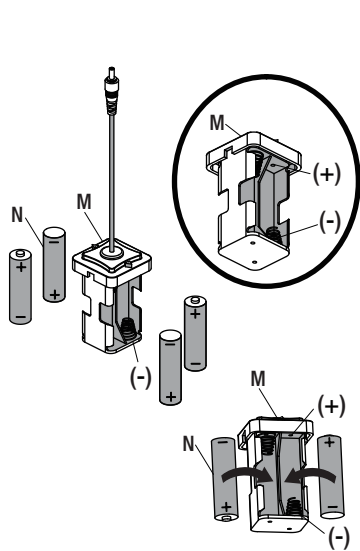
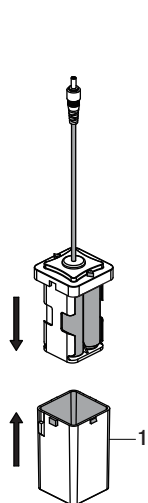


Figure 3



Installation (continued)

8 Installation using the battery pack

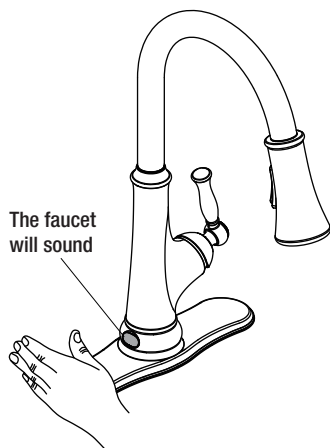
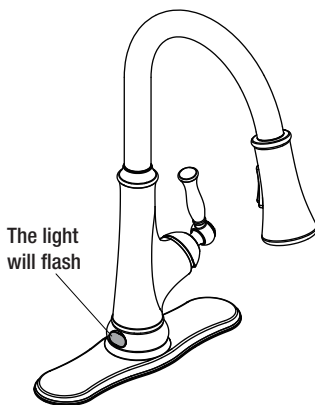
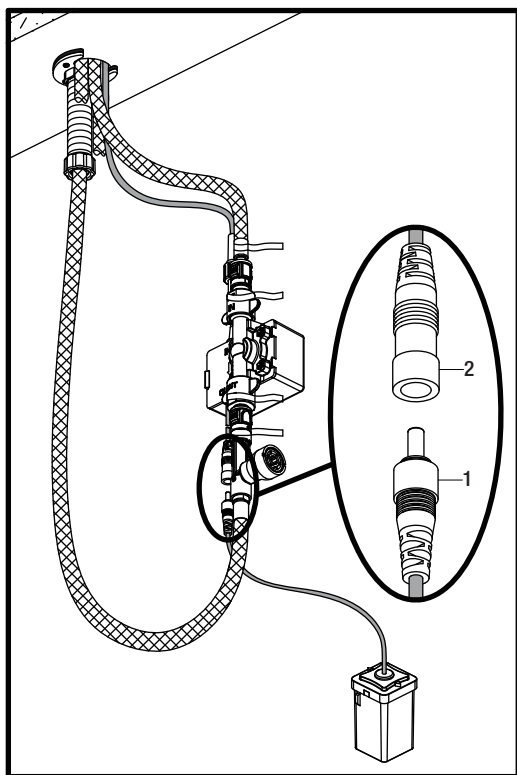


NOTE: This step is for battery installation (optional). If the battery will not be used, install as described in step 10.

- Insert the battery pack cable (1) into the control box connection (2).



NOTE: After installing the battery pack, the light on the sensor will flash and the faucet will sound when you move your hand in the sensor area. If not, check to ensure the batteries are installed correctly.

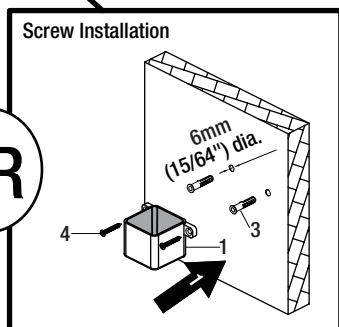
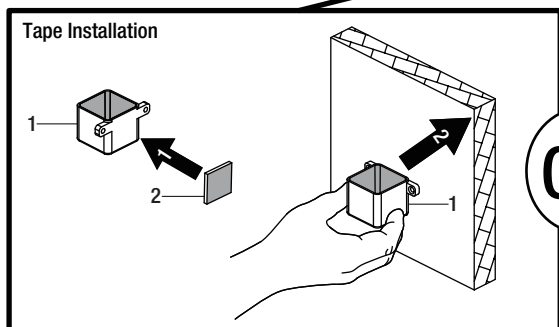
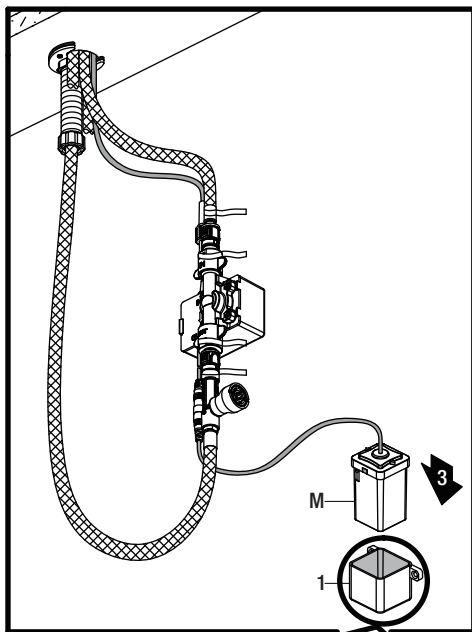


9 Placing the battery pack into the battery pack seat



NOTE: This step is for battery installation (optional). If the batteries will not be used, skip to step 10. Before installation, select the location for the battery pack seat (1) and verify that the battery pack (M) will reach battery pack seat (1).

- There are 2 options to secure the battery pack (M) under the counter: Tape Installation or Screw Installation.
- **Tape Installation:** Attach one side of the double sided tape (2) to the battery pack seat (1). Firmly attach the battery pack seat (1) to the cabinet wall. Place the battery pack (M) into the battery pack seat (1).
- **Screw Installation:** Drill holes in the wall using a 6mm (15/64") diameter drill bit. Install the battery pack seat (1) using the molly anchors (3) and screws (4) provided. Place the battery pack (M) into the battery pack seat (1).



OR

10 Installation using the AC adapter (not included)

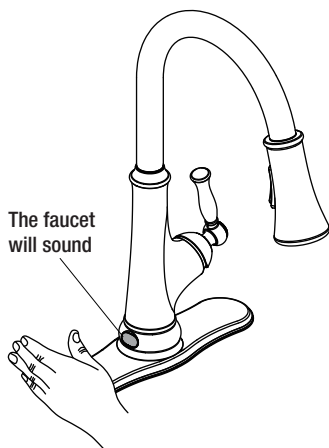
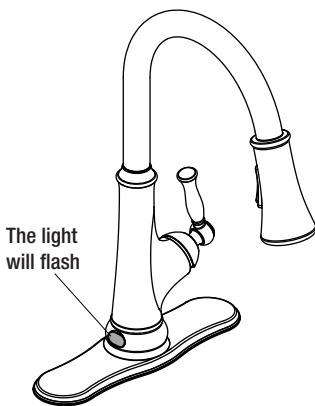
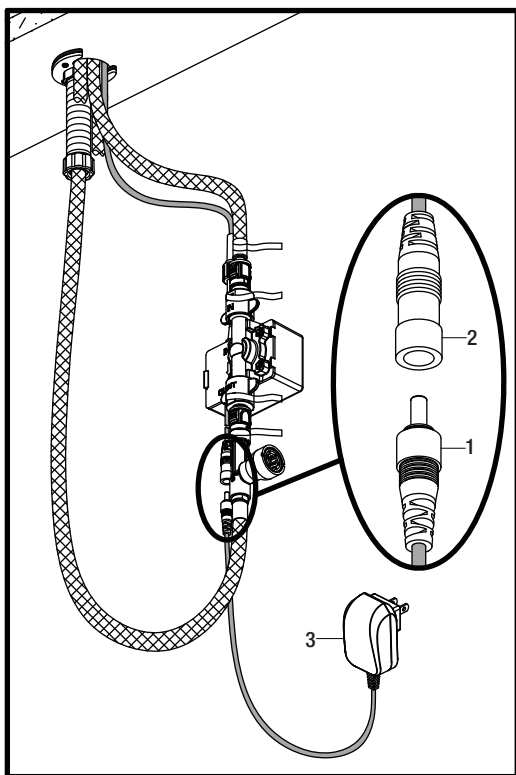


NOTE: This step is for installation without batteries using an AC adapter (not included). If using the batteries, install as instructed in step 7 and skip to step 11. The AC adapter is not included with the product, but can be purchased from Homedepot.com.

- Insert the AC adapter cable (1) into the control box port (2).
- Install the AC adapter (3) into the power outlet.

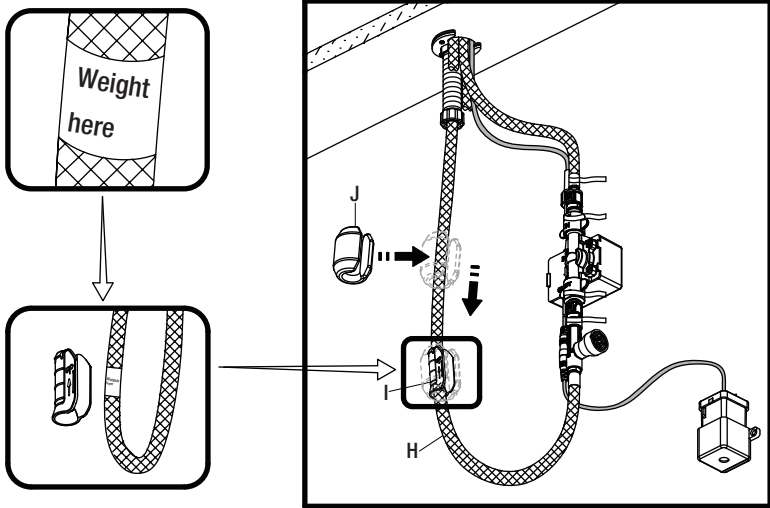


NOTE: After installing the AC adapter, the light on the sensor will flash and the faucet will sound when you move your hand in the sensor area. If not, check if the connections are made properly.



11 Installing the weight

- Install the weight clip (I) at the point of the hose (H) marking “weight here”.
- Insert the weight (J) onto the clip (I) by sliding it down onto the clip (I).



12 Installing the soap dispenser

- Insert the soap assembly (P) through the selected hole in the sink. Secure the soap assembly to the sink with the soap dispenser mounting nut (Q) provided. Push up the soap dispenser mounting nut (Q) to sink and hand-turn to tighten, as shown in the Fig 1.
- From under the sink, screw the soap bottle (R) onto the soap assembly (P) shank. Insert the soap pump (O) down into the soap assembly (P).

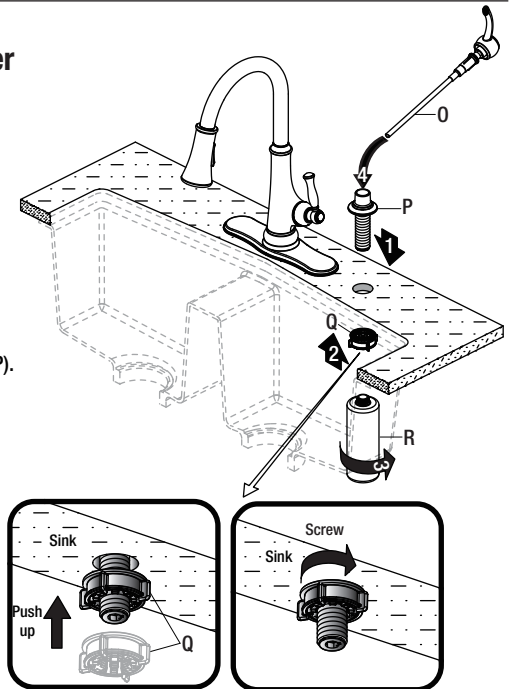


Fig 1

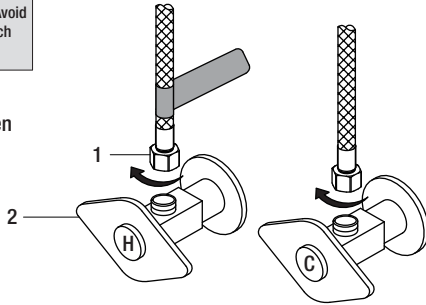
Installation (continued)

13 Making the water supply connections



NOTE: The hot side inlet tube is indicated by a label. Avoid twisting wires together or placing the wires close to each other and damaging.

- Thread the nut (1) on the supply line onto the outlet of the water supply valve (2) and tighten with a wrench. Do not overtighten.



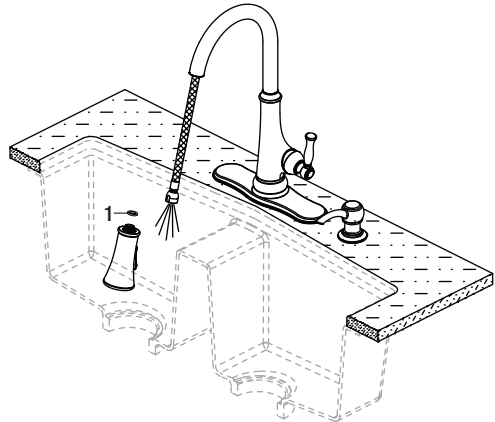
Operation

1 Flushing and checking for leaks



IMPORTANT: After installation is completed, turn on the hot and cold water supplies. Check for leaks. Do not lose the gasket (1) in the hose.

- Pull the hose assembly out of the spout and remove the spray head by unscrewing it from the hose in a counterclockwise direction. Be sure to hold the end of the hose down into the sink and turn the faucet to the warm position where it mixes hot and cold water.
- Flush the water lines for one minute. This flushes away any debris that could cause damage to internal parts. Check for leaks.
- Re-tighten any connections if necessary, but do not overtighten. Reinstall the spray head by hand tightening it back onto the spray hose in a clockwise direction.



Operation (continued)

2 Operating the sensor

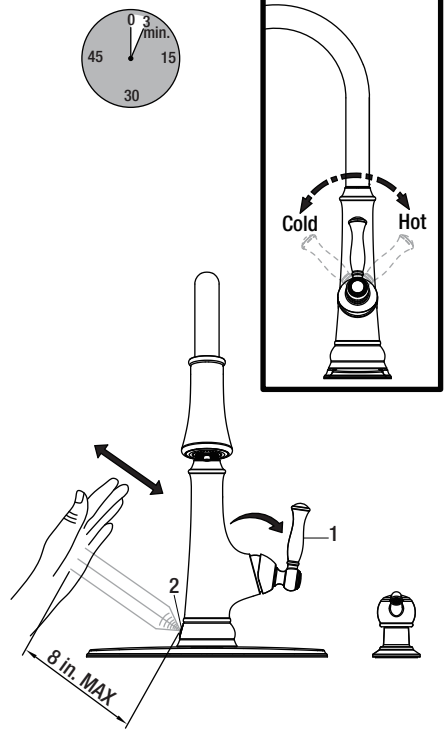


NOTE: The sensor is active only when the handle is in the ON position.

- Turn the handle (1) away from the faucet to the full on position. Turn the water on by activating the sensor (2) by waving your hand within 8 inches of the sensor.
- Move handle towards you and away from you, the water flow pattern can be switched from the cold water to hot water.
- **If the sensor does not work, then you can refer to the troubleshooting. If you want to use the faucet without the sensor feature, then you can refer to step 6. Then, turning on the water can be done by moving the handle away from the faucet to the full on position.**

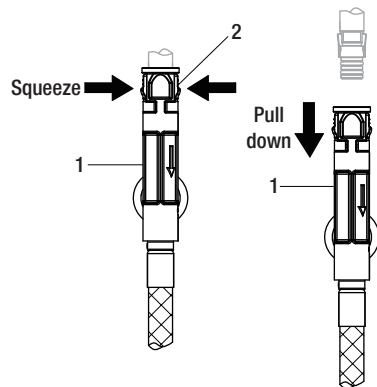


NOTE: As a water saving feature, the water will turn off automatically after 3 minutes of continuous flow.



3 Removing the quick connector (not required)

- If it is necessary to remove the quick connector (1), squeeze the tabs (2) on the quick connector and then pull down to disconnect.



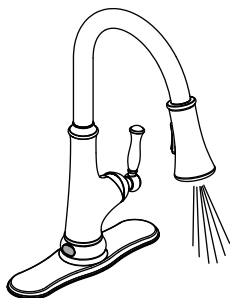
Care and Cleaning

- To clean, wipe down with a damp cloth and dry with a towel.
- Do not use abrasive cleaners, steel wool, or harsh chemicals when cleaning this faucet, or the warranty will be voided.

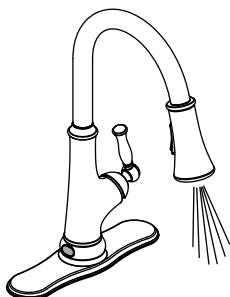
Troubleshooting

1 Water will not shut off when turning the handle to the OFF position

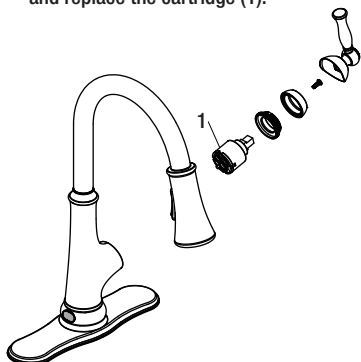
- When you turn the handle to the full on position, the water will turn on.



- But when you turn the handle to the full off position, the water does not turn off.

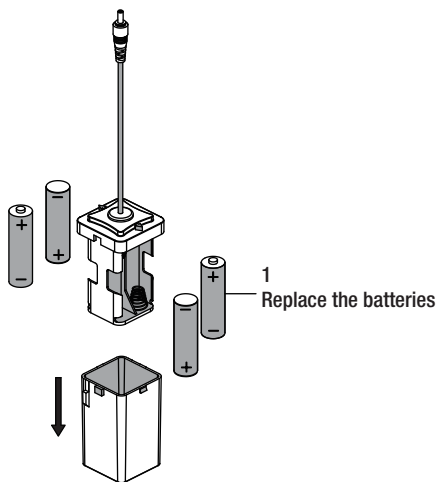
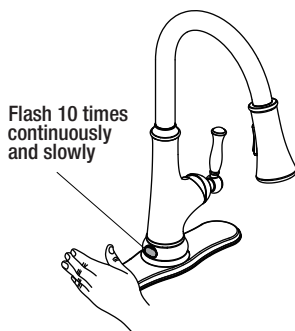


- This indicates that the cartridge is damaged. Turn off the water supply, remove the handle and replace the cartridge (1).



2 The light on the sensor is flashing continuously

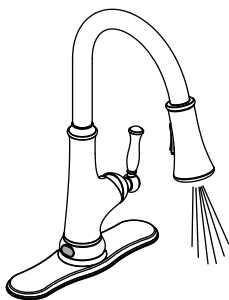
- If the handle is closed, turn the handle to the on position and move your hand in the sensor area. If the sensor flashes 10 times continuously and slowly, then replace the 4 "AA" batteries.



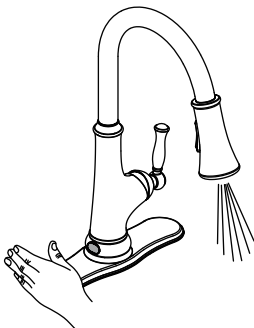
Troubleshooting (continued)

3 The sensor is not activating the water flow

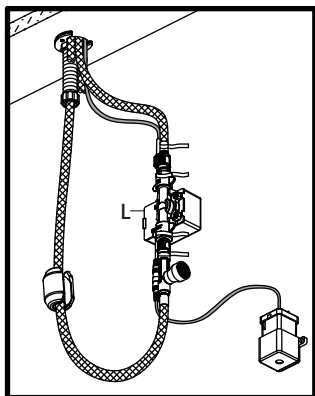
- When you turn the handle to the full on position, the water will turn on.



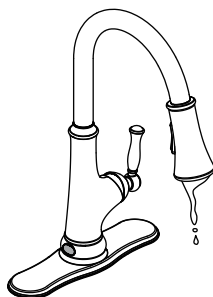
- However, when you move your hand in front of the sensor, the water does not turn off as it should.



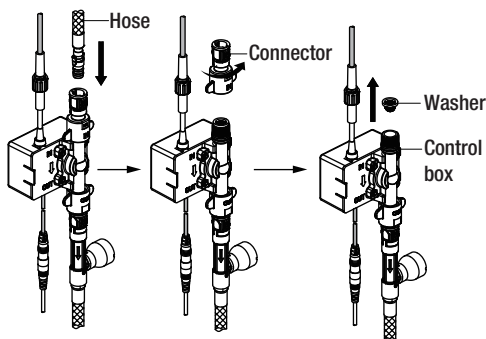
- This indicates that the control box is damaged. Call Glacier Bay customer service to request a replacement control box. Replace the old control box with the new control box.



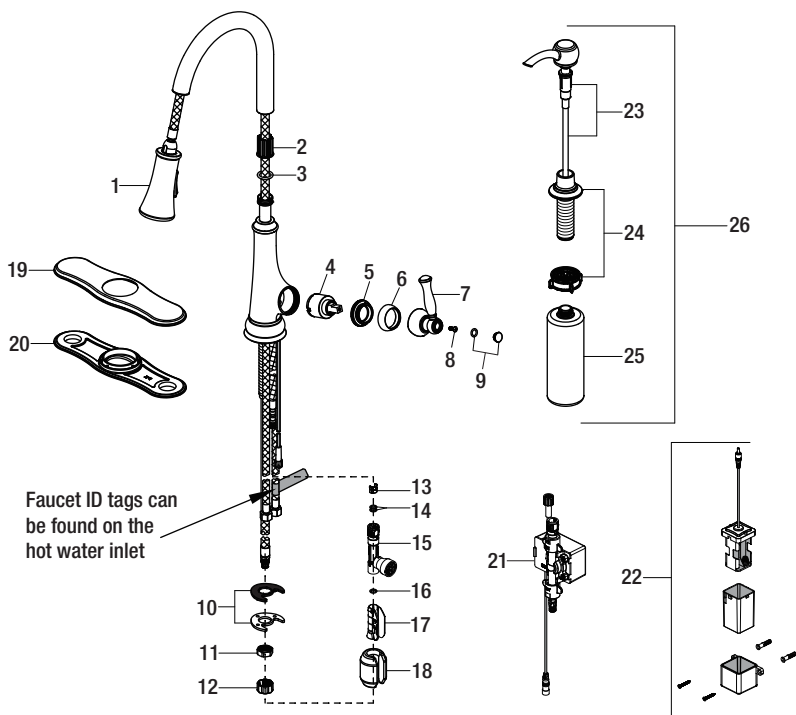
4 There is a low flow of water or LED indicator in the spray head is not functioning



- This could indicate that the washer in the "in" end of the control box is dirty or damaged. Remove the hose and unscrew the connector. Take out the washer from the control box. Clear the washer or replace the washer. Reassemble the connector and hose.



Service Parts



Part	Description	Part Number
1	Spray head and Hose	RP38223*
2	Wearable ring	RP70380
3	O-ring	RP60071
4	Cartridge	RP20005
5	Bonnet nut	RP70394
6	Cap	RP80028*
7	Handle	RP13368*
8	Screw	RP50015
9	Index & O-ring	RP80440*
10	Washer	RP64239
11	Nut	RP56098
12	Protective cap	RP70448
13	Block	RP70421
14	O-ring	RP60002

Part	Description	Part Number
15	Quick connect assembly	RP70482
16	O-ring	RP60089
17	Weight clip	RP64204
18	Weight	RP70441
19	Escutcheon	RP80441*
20	Gasket	RP80442
21	Sensor control box	RP70515
22	Battery pack	RP70514
23	Pump kit	RP46022
24	Flange kit	RP46066*
25	Soap bottle	RP46060
26	Soap dispenser kit	RP46065*

*Specify Finish

Many replacement cartridges, aerators, and drain assemblies can be purchased at your local The Home Depot store or online at HOMEDEPOT.COM



Questions, problems, missing parts?

Before returning to the store, call Glacier Bay Customer Service

8 a.m. - 7 p.m., EST, Monday - Friday

9 a.m. - 6 p.m., EST, Saturday

1-855-HD-GLACIER (1-855-434-5224)

[HOMEDEPOT.COM/GLACIERBAY](https://www.homedepot.com/glacierbay)

Retain this manual for future use.