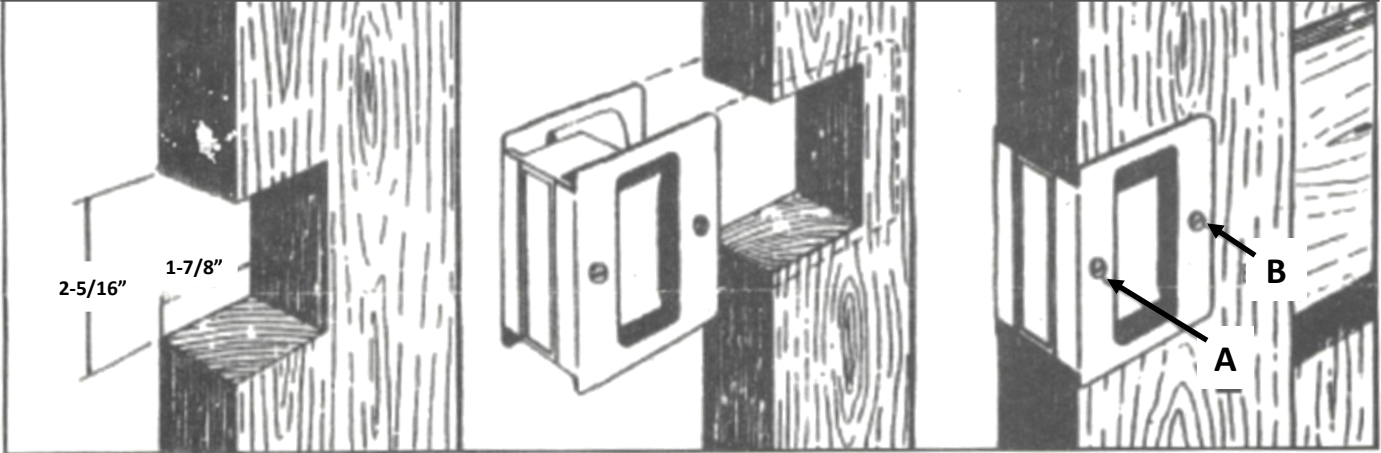


INSTALLATION INSTRUCTIONS

COMBINATION SLIDING DOOR PULL AND LOCK

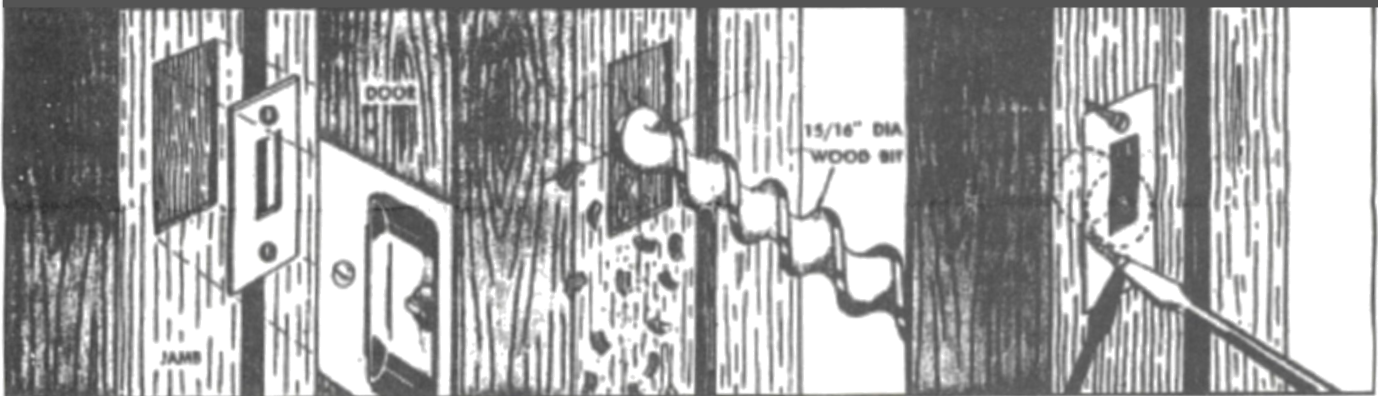


① Cut one simple notch in door

② Slip pull into position as shown. Mark screw hole locations on door. Countersink to 5/16" dia.

③ Fasten side plates with wood screws (B). Align center section by loosening and tightening machine screws (A).

INSTALLATION OF STRIKE PLATE FOR LOCKING SET ONLY



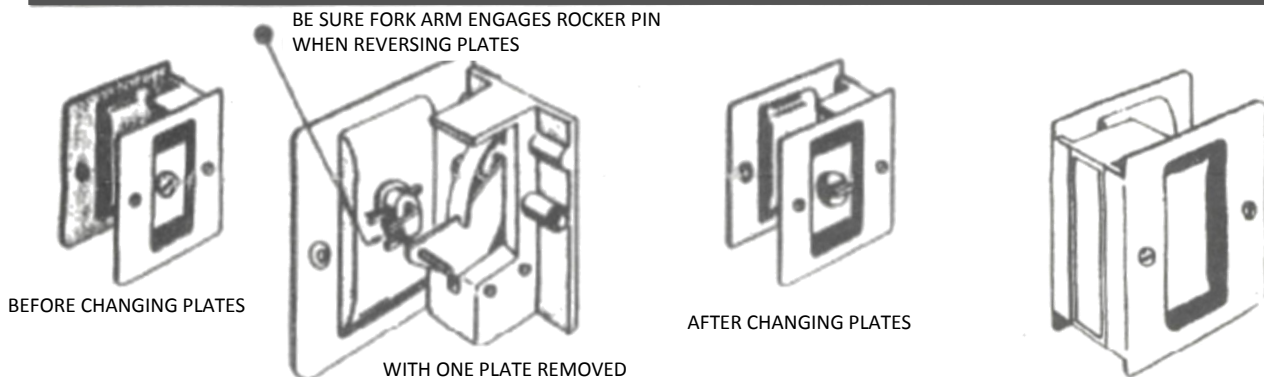
① Mark and mortise strike on jamb to correspond to lock position on door.

② Drill 15/16" diameter hole 1/2" deep in center of mortise.

③ Screw strike plate into position using #6 x 5/8" large flat head wood screws

TO ASSEMBLE AFTER REVERSING PLATES

FOR 1-3/4" THICK DOORS



When it is desirable to reverse outside plates on lock assembly, first remove machine screws on each side - change plates from side to side (making sure that fork arm engages rocker pin) and re-assemble

Back out machine screw on each side of 3/16" - then install per instructions