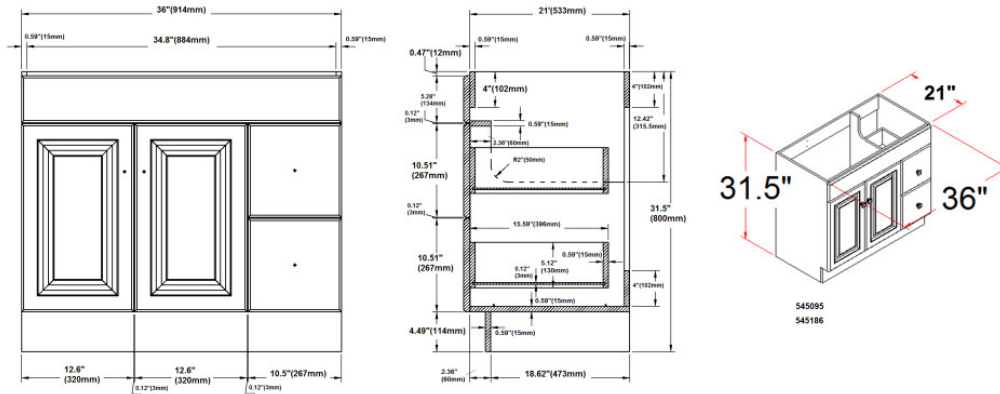


Wyndham Unassembled 2-Door 2-Drawer Vanity without Top 36"  
Grey



SPECIFICATIONS

MATERIAL CONSTRUCTION:	PVC
ASSEMBLY REQUIRED:	Yes
TOOLS NEEDED FOR ASSEMBLY:	Wrench
ASSEMBLED DIMENSIONS:	31.5" H x 36" L x 21" D
ASSEMBLED WEIGHT:	83 lbs.
HINGE STYLE:	Concealed
DOOR STYLE:	2 Slab MDF Doors
DRAWER STYLE:	2 MDF Drawers
GLIDE STYLE:	STD Easy Glide
FAKE DWR STYLE:	N/A
DWR #1 DIMENSIONS:	15.59" W x 5.12" H
DWR CONSTRUCTION:	Standard
SHELF STYLE:	N/A
SHELF ADJUSTABILITY INCREMENTS:	N/A
SHELF MAX WEIGHT CAPACITY:	N/A
SHELF DIMENSIONS:	N/A
SHELF THICKNESS:	N/A
SHELF MATERIAL:	N/A

FRAME STYLE:	N/A
FACE FRAME MATERIAL:	MDF
SIDES MATERIAL:	Particle Board
BOTTOM MATERIAL:	Particle Board
TOE KICK INSET WIDTH:	4.5"
BACK PANEL MATERIAL:	N/A
BACK BRACE MATERIAL:	Particle Board



WARRANTY:	1-Year limited warranty
CARB COMPLIANT:	CARB Phase 2
TITLE IV COMPLIANT:	Yes



TYPE:  
JOB:  
ORDER CODE:  
APPROVALS: