



EZ Shelf Instructions – Closet Shelf & Rod with 1 Optional End Bracket

Need Help?



888-399-2880

Watch 2 Installation videos BEFORE Installation: www.ezshelf.com/install.

Included Plastic Parts

Tube Receivers – Left and Right	1 - Center Support	1 - End Bracket (use is optional)
 <p>Left shown</p>		

Notes Before Starting -End Bracket will NOT be used if installing between two sidewalls (sides of a closet).

Installing in a Tight Space (40-44" wide for 40-73" tubes, and 28-32" wide for 28-48" tubes)

Insert ALL tubes into both left & right Tube Receivers BEFORE step 1. Tubes will NOT fit into a tight space once the brackets are mounted to the wall. Either have someone help hold the Shelf or mount Center Support Bracket First. The tubes will NOT fit into a tight space once the brackets are mounted to the wall.

Mounting Tube Receiver to Sidewall

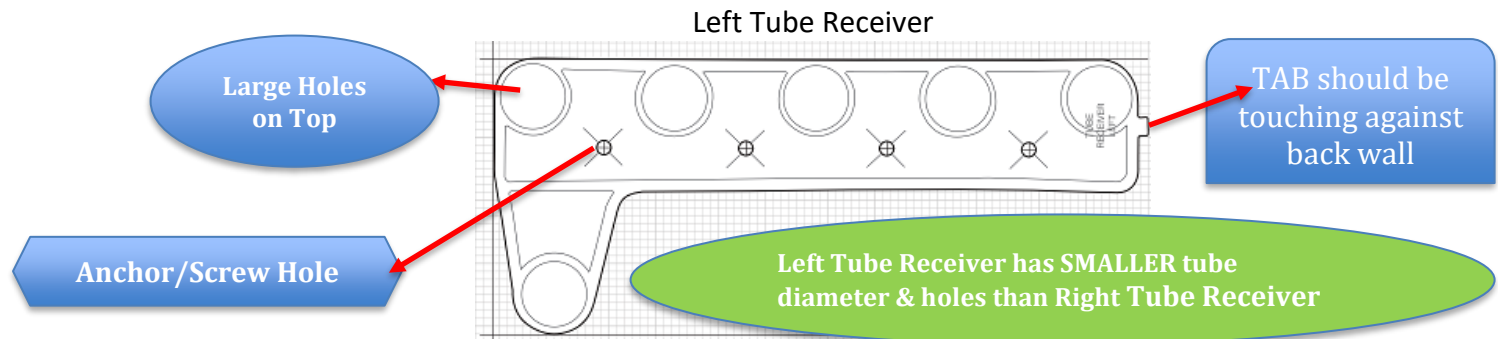
1. Measure & Mark Sidewall from floor up

Suggested Shelf Heights: Single Hanging: 60-80" from floor to top of shelf. Double Hanging: 80-84" from floor to top shelf & 40-42" for bottom shelf.

2. Tape Tube Receiver Template to sidewall – Must be Level.

3. Mark Four Screw Holes with Pencil.

Note: Tube Receiver Installation: Large Holes MUST be on Top & Small, Protruding TAB MUST touch back wall (see below).



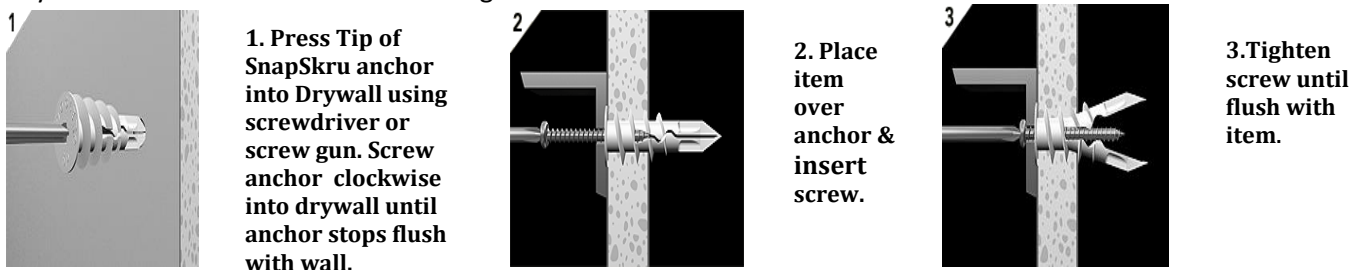
4. Check for Studs –Push nail/screw into drywall - If it doesn't go all the way in you may be hitting a stud or other object.

5. Drywall Anchor Instructions- Drill/poke a small hole into wall. Push TIP ONLY of Anchor into drywall & Screw in plastic anchors (see drywall anchor pictures below). Use screwdriver/electric drill **(on LOW setting – do NOT over tighten).**

Note: EZ Shelf will hold 200 lbs. WITHOUT securing to studs.

- **If you HIT A STUD:** Do NOT use included anchors. Drill "pilot" hole into stud & attach screw directly to stud.
- **PLASTER WALLS:** Do NOT use included anchors/screws. Use plastic or lead anchors & appropriate screws.
- **CONCRETE WALLS:** Do NOT use included anchors/screws. Use concrete anchors/screws (Tapcon or similar). Drill pilot hole first (hammer drill may be best).

Drywall Anchor & Screw Installation Diagrams



6. **Insert Back Tube (closest to back wall)** into installed Tube Receiver (use hammer or mallet if necessary).
7. **If using an End Bracket, follow steps 15-22 for End Bracket Installation.**
8. **Attach Back Tube to other Tube Receiver and Extend to opposite sidewall.**
9. **Place Level on Back Tube & then also on Tube Receiver** – Must be level - Mark Holes on wall with pencil.
10. **Repeat Steps 4 and 5 above** (from page 1)
11. **Insert 4 other Top Tubes into both Tube Receivers. Don't insert Hanging Rod tube (Bottom of "L") until after step 13.**
12. **Twist both ends of tubes until fully secured.** You may need to use a hammer to tap in tubes.
13. **Place Center Support so the tubes rest in the slots** (preferably thicker part of tubes) & Mark Holes on back wall. Push center support up so that they come into full contact with tubes.



Note: DO NOT rest Center Support on tube extension sleeves.

14. **Attach Center Support using anchors and screws** (see steps 4-5 on page 1).

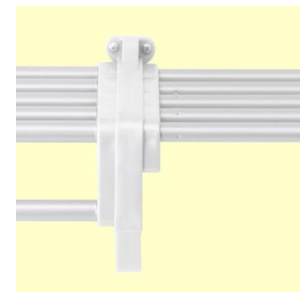
Installing with only 1 Side Wall – Mount 1 Tube Receiver on Side Wall using steps 1 - 6

One Optional End Bracket is needed when:

Ending Unit **WITHOUT** a side wall.



Joining 2 units together.



Forming a corner with another unit.



If you have NO Side Walls, a 2nd End Bracket must be purchased.

15. **Snap Tube Receiver into appropriate side of End Bracket.** Hold End Bracket up to wall to ensure that the correct Tube Receiver is snapped in and the shelf will extend in the correct direction
16. **Place Bolts into End Bracket holes** on the outside of the End Bracket. **17. Thread nuts on the bolts** and turn them a few times with your fingers.
18. **Tighten nuts & bolts** with a manual or electric screwdriver until snug.
19. **Attach Back Tube to other Tube Receiver** (which is attached to End Bracket).
20. **Place Level on Back Tube & also on Tube Receiver/End Bracket**–Must be level - Mark Holes on wall with pencil.
21. **Repeat Steps 4 and 5** (page 1). **22. Repeat steps 10-13**
23. **Insert Tube for Hanging Rod into both Tube Receivers.**