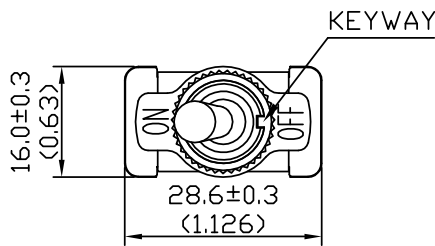


Rating	20A 125V, 10A 277V AC 3/4HP 125-250 VAC	Mounting Hole	Circuit Diagram
Contact R	50m ohm Max.		
Insulation R	DC 500V 100M ohm Min.		
Dielectric Strength	AC 1500V 1 minute		
Circuit	2P SPST ON-OFF		
Operation Force	600g±200g		



- 1 HEX NUT ASSY
- 1 ON/OFF FACE PLATE ASSY
- 1 KNURL NUT ASSY

Packing: As GB's standard pack
(1 pce/blister card, 5 pcs
/box stick with one label)

