

## Vinyl Rip-Bead L-Trim (VLZL)

### Vinyl Trims

Vinyl Rip Bead™ L-Trim produces an exceptional finish at intersection of gypsum panels to ceiling grid, window returns and dissimilar wall types. A tear-away strip on the Rip Bead™ L-Trim provides a protective edge and a guide for the drywall finishing knives. Once joint compound is applied, finished and painted, the tear-away strip is removed to form a crisp, clean edge. Multiple perforations along the nailing flange enhance strong compound adhesion.

#### Product Data & Ordering Information:

Material: 0.028" PVC (Polyvinyl Chloride)  
Dimensions: 1/2" & 5/8" depths

Width	Length	Wt./Ctn.	Pcs./Ctn.
1/2"	8'	16 lbs	50
1/2"	10'	20 lbs	50
5/8"	8'	17 lbs	50
5/8"	10'	21 lbs	50

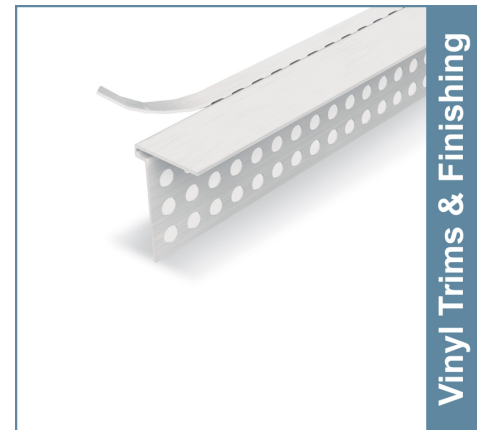
#### ASTM & Code Standards:

- ASTM C1047 - Standard Specification for Accessories for Gypsum Wallboard and Gypsum Veneer Base
- ASTM D3678 Class 2 materials
- Installation: ASTM C840 & C841 (Interior Finishes)
- SDS & Product Certification Information is available at [www.clarkdietrich.com/SupportDocs](http://www.clarkdietrich.com/SupportDocs)

#### Storage:

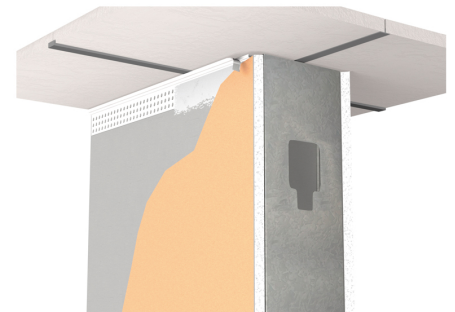
All stored materials shall be kept dry. Materials shall be stacked off the ground, supported on a level platform, and protected from the weather.

### 09.22.00 (Support for Plaster & Gypsum Board)



Vinyl Trims & Finishing

- Rust proof and dent resistant
- Eliminates clean up and masking tape
- Produces finished edges at panel terminations
- Multiple perforations enhance joint compound adhesion



#### Project Information

Name:  
Address:

#### Contractor Information

Name:  
Contact:  
Phone:  
Fax:

#### Architect Information

Name:  
Contact:  
Phone:  
Fax: