



# ELASTO LOCK

100% WATER-PROOF RUBBER MEMBRANE

## DATA SHEET



Flood Protection for Floors and Walls



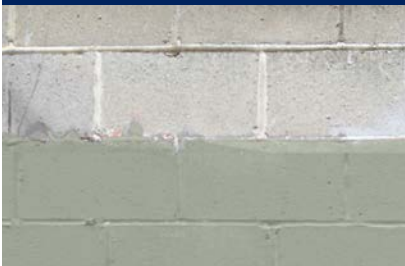
Water and Vapor Barrier



Undercoat Before Paint



Undercoat Before Tile Mortar



Below-Grade Moisture Barrier

ElastoLock® is a versatile and functional roll-on waterproof membrane that imparts exceptional waterproofing, flexibility and weathering advantages to many existing surfaces. It's an easy-to-use, single component, zero VOC, water-based / water clean-up coating that exhibits excellent bonding power on concrete, concrete block and wood – as well as tile backer-board, plasterboard, primed metal and plastic.

As a superior moisture and stain-blocking material – with outstanding ability to span seams and cracks – ElastoLock® is also an excellent installation surface for all DAICH Spreadable Stone coatings.

ElastoLock® delivers excellent flexibility with high elongation up to 800%. Resilience is maintained even in sub-zero temperatures as low as -15° F (-27° C).

### Multiple Uses:

ElastoLock® is an excellent solution wherever added protection from water and vapor are desired:

- **Waterproof Surfaces** before painting
- **Daich Textured Floor and Wall finishes** where a resilient water-proof underlayment is desired
- **Flooring Underlayment** protective water-proof membrane prior to tile, hardwood or carpet.
- **Wood** – part of a water-proof deck coating system
- **Basement Walls** – blocks water and vapor
- **Shower Enclosures** – and more
- **Balconies** – to halt moisture transmission
- **Foundation Walls** below grade



### ElastoLock® Performance Features...

- excellent adhesion
- excellent water and vapor blocking
- up to 800% elongation
- spans cracks and seams
- stays flexible in sub-zero temperatures
- blocks stain transmission
- water submersible
- does not support mold growth
- fast dry time (30 - 60 minutes)
- extends exterior paint life
- roller or spray application
- ready to apply
- water-based / water clean-up
- ZERO VOC

### Uses:

Interior and exterior applications on concrete, concrete block, plywood, drywall, tile backer board, fiberglass decking, etc. As a pliable water-proof membrane, ElastoLock® is used to block intrusion of liquid water, as well as transmission of moisture vapor and stains.

Used in combination with ElastoLock® Reinforcing Deck Fabric and ElastoLock® Seam Mesh Tape, ElastoLock® is also an excellent solution for adding a water-proof, resilient protective barrier over plywood decks.

### COVERAGE RATES: Variable with substrate conditions and application method/thickness.

Waterproofing - with ElastoLock® Mesh and Reinforcing Fabric	Moisture Repellent Coating Coating alone (no mesh / fabric).	Adhesion Promoter - Undercoat that grabs onto smooth concrete, tile.
For heaviest duty water protection. A waterproof underlay system for wood decks & porches, cracked exterior concrete slabs, balconies, shower enclosures, etc.	For simple, effective water and vapor repellency. As a protective underlayment coating before paint, tile, etc. on walls and floors. Interior / exterior.	Moisture blocking benefits in addition to good bonding capability on very smooth surfaces. An ideal adhesive undercoat before other coatings.
<b>80 sq.ft. (7.5 m<sup>2</sup>) per gal, per coat.</b> Apply two coats for a final dry thickness of 40 - 60 mils (1/16").	<b>120 sq.ft. (11m<sup>2</sup>) per gal.</b> Two uniform coats required.	<b>250 sq.ft. (23m<sup>2</sup>) per gal</b> (two thin coats recommended)

### Packaging:

Available in 1 gallon (3.78L) and 5 gallon (20L) container sizes. 55 (US) gallon drums are also available as special orders.

### Surface Preparation:

Surface must be clean and dry, stable and free from spalling, efflorescence, dust, dirt, oils, surface flaking, sawdust, poorly bonded or glossy paint, sealers, salts and other contaminants which may effect adhesion and product

performance. Surface defects should be repaired prior to coating. **NEW CONCRETE:** must be allowed a minimum of 30 days cure time prior to application of ElastoLock®. **NEW MASONRY SURFACES:** should be allowed to cure a minimum of 48 hours prior to application. Exterior surfaces should be power washed to clear any surface contaminants. **ACID ETCHING:** is only required on concrete/masonry surfaces which are new or efflorescent. Follow with thorough power washing for effective removal of all etching/acid residues. **INTERIOR CONCRETE SURFACES:** scrub with Daich Concrete Cleaner/Etcher™ or TSP (trisodium phosphate) solution followed by thorough rinsing / wet vacuuming. **FOR PLYWOOD SURFACES:** Scuff the surface with 100 grit sandpaper, and vacuum ALL dust. DO NOT INTRODUCE WATER TO WOOD.

**Mixing:** Thoroughly stir ElastoLock® prior to application. DO NOT SHAKE as this may introduce air bubbles to the product.

### Application Tools:

ElastoLock® Damp Proof Rubber Membrane may be applied by brush, roller or airless spray equipment.

ROLLER APPLICATIONS: use a 1/2" (15mm) or 3/4" (20mm) roller.

AIRLESS SPRAY APPLICATIONS: 800 psi recommended. Compression rate of 28:1 with a 0.025" tip. Width of fan spray should be 8". Where dilution is required, an addition of water not exceeding 5% is allowed.

### Application:

ElastoLock® must be applied in two coats 2 to 4 hours apart at right angles to each other to ensure thorough coverage. Optimal final dry thickness for water-proofing purposes is between 30 - 60 wet mils (1/25" - 1/16"). Thinner applications can also be applied for varied uses. (See "Coverage Rate" chart on pg. 1 for details.) Ambient temperatures should not be less than 50° F (10° C), and should not exceed 30° C (85° F) during application and for a continuous period of at least 24 hours after application. DO NOT APPLY IN HOT SUN. Apply in early morning or late afternoon for best control. Not recommended for use on concrete subject to hydrostatic pressure. Check adhesion quality on the intended substrate by applying to a small sample area before starting the job. **\*\*FOR RELIABLE WATER PROTECTION, THE APPLICATION SURFACE MUST NOT BE VISIBLE THROUGH THE COATING.\*\***

**NOTE: ElastoLock® IS NOT SUITED TO LONG-TERM EXPOSURE TO EXTERIOR UV RAYS.** IF USED OUTDOORS, ElastoLock® MUST BE TOP-COATED **after it has cured (24 - 48 hours)** with a material as such as **DAICH Textured Primer™, RollerRock®, SpreadRock®, SpreadStone® or VertiStone®** -- or covered by paint, shingles, back-fill or other suitable material.

**Protective Waterproof Undercoat / Adhesion Promoter** - To lock out water and prolong substrate and paint life. Two thin coats recommended.

**Below-Grade Concrete:** Two thick coats required for a final dry film thickness of 60 mils (1/16"). Allow 48 hours to cure prior to back filling.

**Plywood Flooring (INTERIOR):** Two thin coats required for a final dry film thickness between 30 - 40 mils (1/32" - 1/16"). ElastoLock® Seam Mesh Tape should be used with ElastoLock® along seams, followed by one or two top coats.

**Interior Concrete Basement Walls:** Two coats recommended for a final dry film thickness between up 30 and 60 mils (1/32" - 1/16").

**Exterior Plywood Decks:** two coats are required. ElastoLock® Seam Mesh Tape must be imbedded into a generous wet coat of ElastoLock® along seams. When treated seams are dry, apply two coats of ElastoLock® combined with ElastoLock® Reinforcing Deck Fabric applied as a middle layer between coats to form a seamless and flexible water-proof surface. See instruction DVD for details.

### Cure Time:

Dry to touch in 60 minutes, depending on atmospheric conditions. Protect coated surfaces for 8 hours prior to exposure to rain or heavy condensation. In dry, warmer conditions, product cures in 24 hours. In cooler weather [ 40° - 50° F (5° C - 10° C ) ] allow 48 hours for curing prior to application of top coats.

**NOTE:** THOUGH FULLY DRY, ELASTOLOCK REMAINS TACKY FOR ONE TO TWO WEEKS AFTER APPLICATION. THIS IS NORMAL AND DOES NOT INDICATE INCOMPLETE CURING.

### Clean Up:

Equipment can be cleaned with soap and water prior to cure of material.

### Precautions:

In case of contact with eyes, flood eyes repeatedly with potable water and call a physician. Wash hands thoroughly after handling. Do not take internally. KEEP OUT OF REACH OF CHILDREN. Keep container closed. Do not use in the presence of unprotected foodstuffs. **Keep product from freezing.** Product which has been frozen must be discarded. Dispose of unused material in accordance with local, state and federal guidelines.

\*\*\* ElastoLock® Damp Proof Rubber Membrane is designed to function as an effective barrier against unwanted water-intrusion and an additional precautionary measure against general moisture problems. It should be applied in combination with established building practices and local building codes. \*\*\*

### Physical Properties:

Color: Gray  
Opacity – Semi-Translucent  
PH – 8.9 - 9.2  
Viscosity, cps† 19,000 – 21,000  
Wt./Gallon: 4.2 kg (9.3 lb.)  
Freeze/Thaw - Do not freeze

### Performance Data:

Permeability ASTM E-96 – 0.011  
Tensile Strength ASTM D-638 – Up to 549 p.s.i.  
Elongation Percentage - 550 to 820%  
12-Week Shear Strength (M5.6) – 388 psi  
Hydrostatic Resistance – ASTM D-751 Procedure B  
7-Day Water Immersion – 150 psi  
7-Day Shear Strength (M5.3) – 200 psi  
100-Day Water Immersion – 196 psi  
Stain Testing – 0% penetration  
Micro-organism Resistance – no mold growth  
Damp-Proofing (M4.5) – no penetration after 48 hrs  
Seam Strength – 10.3 lb./in. width  
Break Strength (M4.3) – 401 psi 220 psi  
Dimensional Stability (M4.4) – 0.70% length change