

QUICK STRAP®

INSTALLATION INSTRUCTIONS:

*Caution:

Wall coverings may conceal electrical wiring or pipes, which may cause damage or serious injury if punctured by drills or fasteners. Unless you are confident that there will be no interference from such obstacles, we recommend that you seek qualified help when installing this product.

INSTALLER: WEAR GLOVES & PROTECTIVE EYEWEAR WHEN INSTALLING THIS PRODUCT.

*Caution: Strap coil is under tension.

Box Contents

BOX CONTENTS:

- 4 - Straps
- 4 - J-Clips
- 4 - Lag bolts 1/4" x 2 1/2" Self-drilling with 1/4" washers
- 2 - 3/8" bolts, washers, nuts

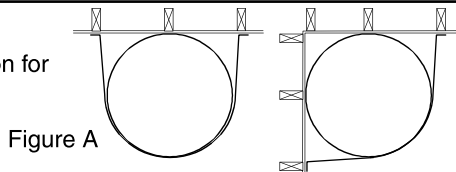
TOOLS NEEDED:

- 3/8" socket or wrench for tightening at wall
- 9/16" wrench for tightening strap and J-Clips
- Optional: Drill with 1/8" drill bit

Check the water heater. If the water heater is not a zero clearance unit (as specified on the rating plate), see instructions inside box on how to build a spacer.

Step 1

Select location for water heater.

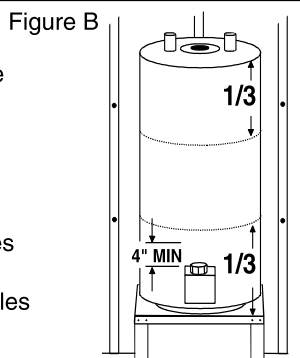


The best place to locate your water heater is directly in front of a 2" x 4" wall stud. See Figure A.

Step 2

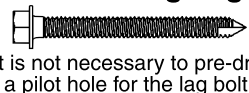
The straps must be installed in the upper and lower 1/3 of the water heater. The lower strap must be at least 4" above the water heater's controls. See Figure B.

Mark the wall studs on both sides of the water heater where you will install the straps. Drill 1/8" pilot holes if desired.



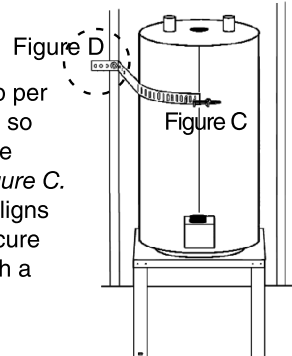
WATER HEATER RESTRAINT BRACKETS

Self-Drilling Lag

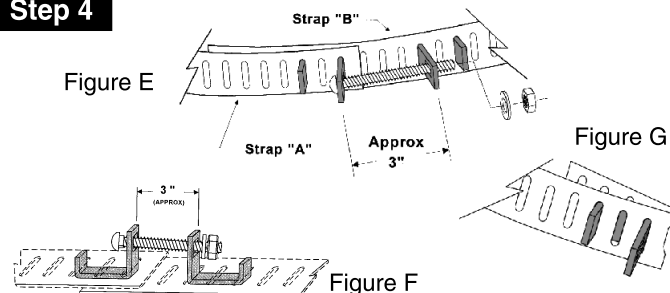


Step 3

Select one strap. Install one J-Clip per Figure E (Strap "A") Hold strap "A" so that the J-Clip is in the approximate center of the water heater. See Figure C. Select a mounting hole that best aligns with the pilot mark on the stud; secure the end of the strap to the stud with a 1/4" x 2 1/2" lag bolt and washer. See Figure D.



Step 4



Install strap "B" (See Figure E) on the opposite side of the heater; select a mounting hole which allows a few inches of strap "B" to pass behind Strap "A", and secure Strap "B" to the wall. Insert a J-Clip into the slots of Strap "B". The longer side of the J-Clip must be towards the end of the strap, so that it is approximately 3" from the J-Clip on Strap "A", when the two J-Clips are pulled together snugly. See Figure F. Hint: If Strap "A" is too long, simply re-position the J-Clip then bend the strap behind the J-Clip as shown in Figure G.

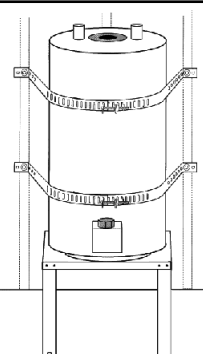
Secure the two J-Clips together with 3/8" carriage bolt, nut and washer, and tighten.

Step 5

Repeat the entire installation process for the second pair of straps using the same hole and slot positions as the first installation. If necessary, trim strap ends at the wall.

Installation Complete

DSA
APPROVED



Hubbard Enterprises
 2560 Progress Street
 Vista, CA 92081
 (800) 321-0316