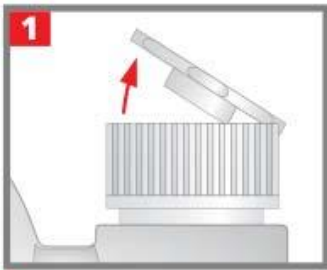


# WET & FORGET. INDOOR

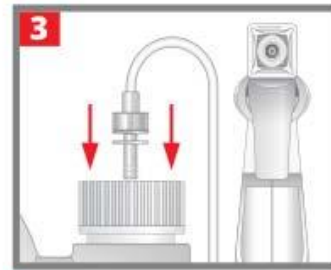
## HOW TO ATTACH THE SPRAYER NOZZLE



**1.** Remove Sticker.  
Open flip cap.



**2.** Hose is coiled inside sprayer. Pull out & fully extend (approx 36in).



**3.** Firmly insert red hose tip.

**NOTE:** Once sprayer is connected, transport upright as product may leak through cap's breather hole.

## APPLICATION TIPS

**Disinfection, Mold & Mildew Control Directions:** Spray 6-8 inches from the surface, until surfaces are thoroughly wet. Do not breathe spray. Treated surfaces must remain wet for 10 minutes. Wipe dry with a clean cloth, sponge or mop or allow to air dry. Rinse all surfaces that come in contact with food such as countertops, appliances, tables and stovetops with potable water before reuse. Do not use on utensils, glassware and dishes.

**For Mold & Mildew:** Repeat treatment every 7 days or more often if new growth appears.

**To Clean & Deodorize:** Apply undiluted to surfaces with a cloth, mop, sponge or sprayer. Wipe or allow to air dry.

**Tough to Reach Areas:** Wet & Forget Indoor is equipped with a remote-spray trigger that allows you to pivot the trigger into any position to get to those tough-to-reach areas. Go ahead turn the sprayer upside-down — you'll get the same product flow that you'd get in the upright position. The Wet & Forget Indoor Mold+Mildew Disinfectant Cleaner spray trigger has the ability to spray up to 10 feet allowing you to clean those not so easy-to-reach areas.

**Where to Use:** Use in damp areas such as bathrooms, showers, kitchens, basements, laundry room and other household areas.

For Use On Hard, Non-Porous Surfaces: Bathtubs, Bathroom Fixtures, Ceilings, Countertops, Finished Woodwork, Floors, Garbage Cans, Glazed Ceramic, Glazed Enameled Surfaces, Glazed Porcelain, Laminated Surfaces, Metal, Plastic, Plastic Upholstery, Showers, Vinyl, Walls

Wet & Forget Indoor Mold+Mildew Disinfectant Cleaner can also be used on: Boats, Campers and Mobile Homes

**Wet & Forget** | Easy Cleaning Solutions For Everyday Problems.