

# Tamarack Technologies HV1000 Whole House Fan **Cools The Indoor Air** of your **WHOLE HOUSE!**

## HV1000

- Energy Efficient
- Easy Installation
- No Maintenance
- Mechanically Sealed Doors Insulated to R38 or R50
- Horizontal or Vertical Installation
- Fits 16" or 24" On Center Joists
- No Joist Cutting Necessary
- 3 Year Limited Warranty
- Assembled in the USA
- 1000 CFM

The HV1000 is an innovative design in whole house cooling. The system is engineered to efficiently reduce the indoor temperature of your home by introducing cooler outside air.



## Install "The Original" **Whole House Fan**

and enjoy the comfort and benefit of a well ventilated home while reducing your **ENERGY COSTS** and your **CARBON FOOTPRINT!**

LIKE US ON  
FACEBOOK



FOLLOW US  
ON TWITTER

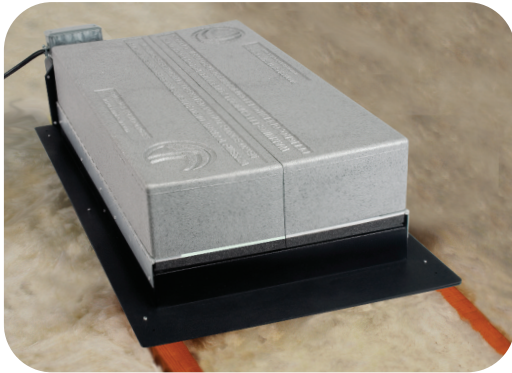


**Tamarack**  
Technologies, Inc.

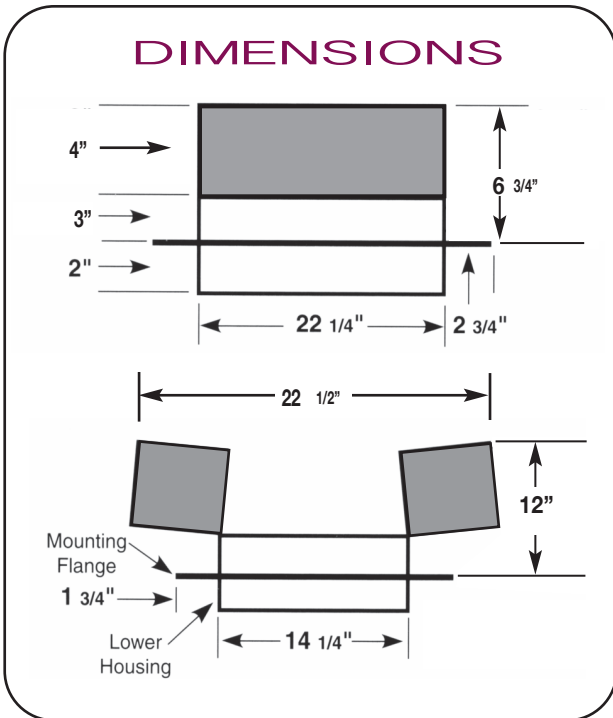
*Ventilation Solutions*  
[www.tamtech.com](http://www.tamtech.com)

800-222-5932

# Cools The Indoor Air of your WHOLE HOUSE!



## DIMENSIONS



### Optional Accessories:

- Remote Control Kit
- Vertical Grille

\*CFM rates measured in a controlled test environment.  
Actual results will vary due to building construction.

## SPECIFICATIONS

<b>Electrical:</b>	
Voltage	115 VAC 60Hz
Power	70 Watts
<b>Air Flow</b>	1000 CFM*
<b>Fan Weight</b>	Fan: 18 Lbs.
<b>Operation</b>	30 second door delay before fans start.
<b>Insulation Value of Closed Doors</b>	R38 or R-50
<b>Rough Opening</b>	14 1/2" x 22 1/2"
<b>Interior Grille</b>	Outside Dimensions: 15 3/4" x 25 3/4" Color: White
<b>Attic Ventilation Requirements</b>	3 square feet.

Hardwired for power and control (control not included).  
Recommended controls are the TTI-HVRC remote kit, or an SPST wall switch, or a non-digital spring wound mechanical timer.  
All other controls will void the product warranty.



**Tamarack**  
Technologies, Inc.

Ventilation Solutions  
[www.tamtech.com](http://www.tamtech.com)

800-222-5932