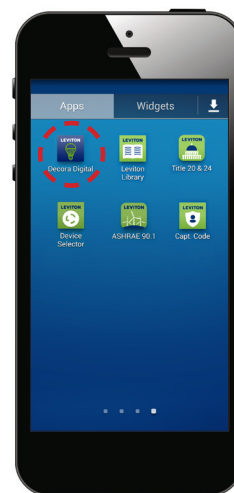


Pairing and Operating the Leviton Decora Digital Dimmer from your Smart Device



Step 1

- Locate and open the Leviton “Decora Digital Dimmer & Timer” app on your smart device.



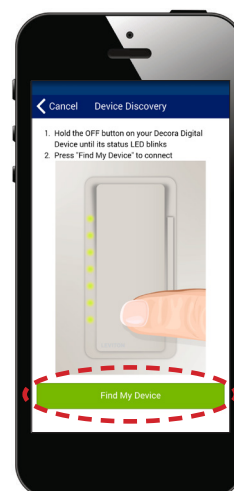
Step 2

- Select the “+” sign at the top right corner to add your Decora Digital device.



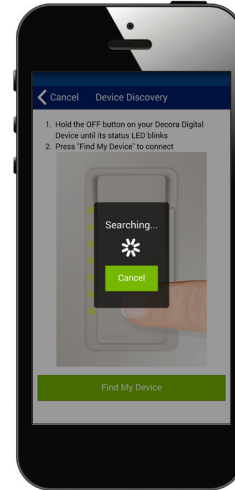
Step 3

- Follow the on-screen instructions to pair your smart device:
 - Hold the OFF button on your Decora Digital device until its status LED blinks.
 - Press “Find my Device” to connect.



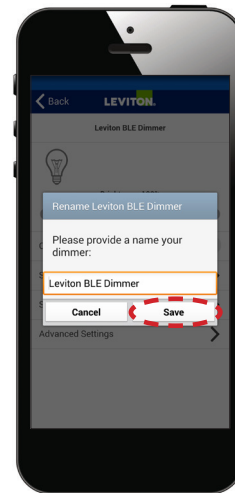
Step 4

- While pairing, your smart device will display a search screen. Wait 10-30 seconds.



Step 5

- Once your smart device has successfully paired, you can assign a nickname to your Decora Digital device.
- Hit the "Save" button to continue.



Step 6

- Your device is now paired.
- You can test it by sliding the "Off" button to the "On" position. Your Decora Digital device will now switch on.



**These instructions apply to both Android and Apple devices.*

Visit our Website at: www.leviton.com/decoradigital

© 2016 Leviton Manufacturing Co., Inc. All rights reserved.
All trademarks are the property of their respective owners.



App Store, Google Play and the Bluetooth word marks and logos are the registered trademarks of Apple Inc., Google Inc. and Bluetooth SIG, Inc., respectively, and any use of such marks by Leviton is under license. All other third party trademarks are the property of their respective owners.