

WEDDING CAKE STEP

INSTRUCTION MANUAL

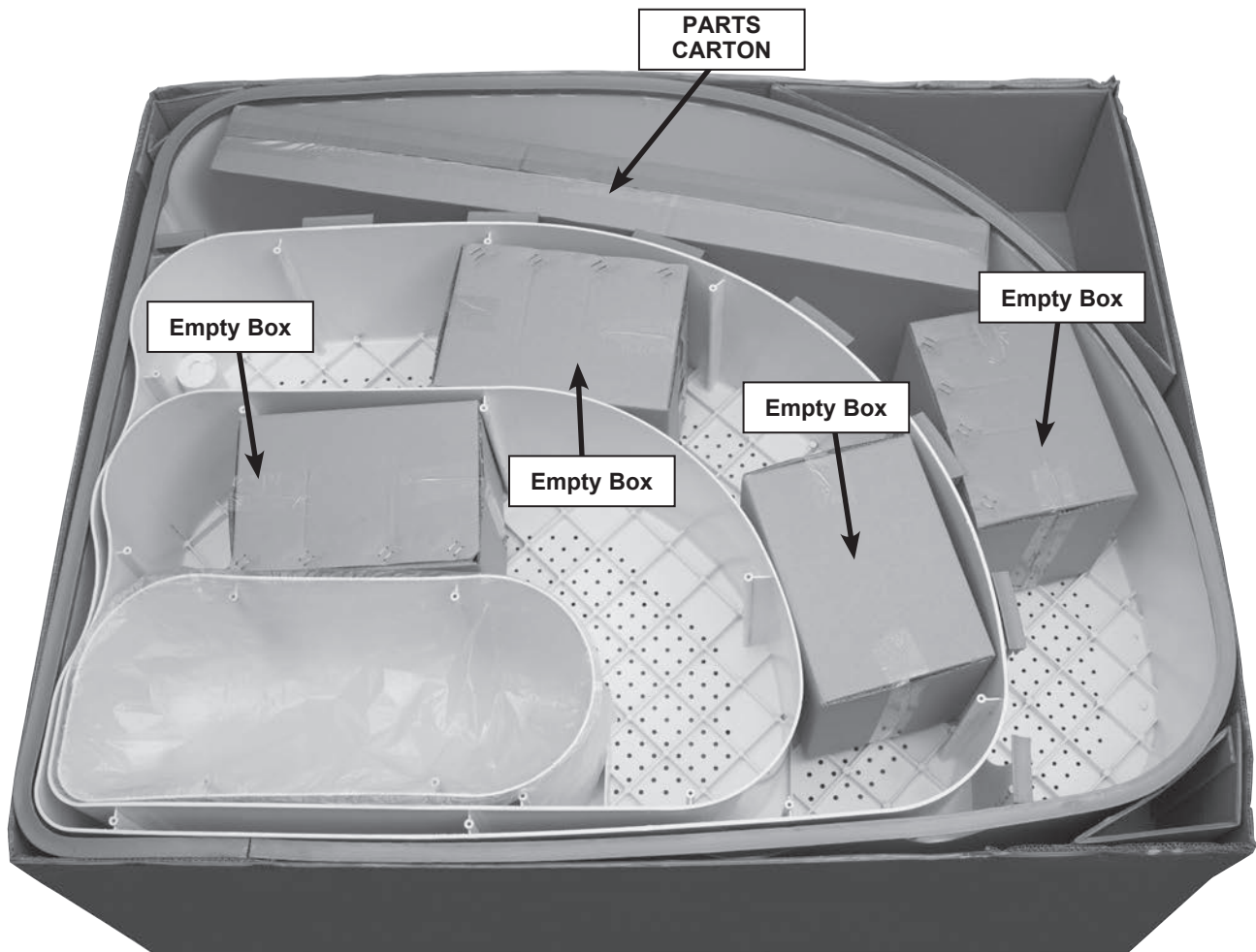
NE100WH



TOOLS REQUIRED

- Phillips head screwdriver — included

PARTS & HARDWARE FOR STEP



- Everything you need to assemble your new Pool Step is located inside the step box. Simply remove the carton top and all the step components are revealed.
- The 4 square boxes inside the steps are empty and are for shipping purposes only.
- The long box packed inside the step is your parts carton. This box contains the hardware and hand rail components. Open this box first.

HARDWARE

- STEP ASSEMBLY — BAG A (NEP1007)
- HAND RAIL — BAG B (NEP1008)
- DECK BRACE — BAG C (NEP1009)

STEP 1



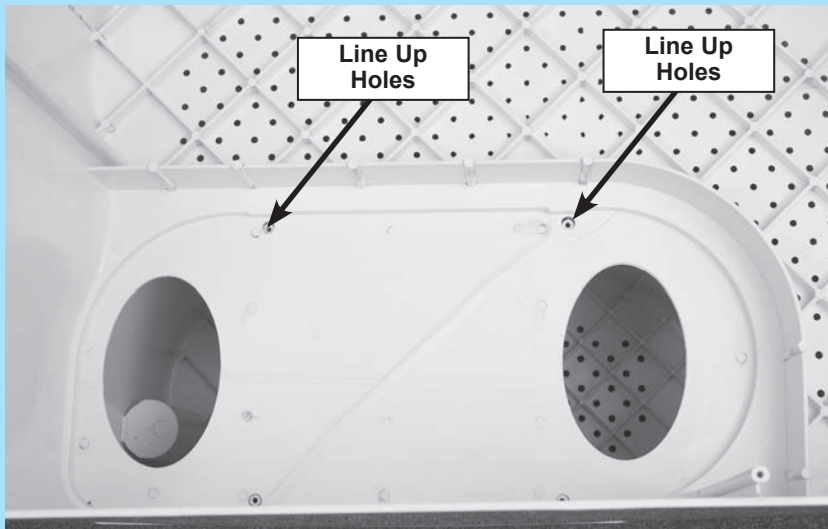
- Remove (NEP1024) from the carton and place it upside down on the ground. This is your top step.

STEP 2

- Remove the next step from the carton — Step 3 (NEP1025) and place it upside down over the top step.



STEP 3



- Be sure to line up the pre-drilled screw holes in the 2 steps.

STEP 4

- Use the screwdriver that is packed in the **HARDWARE Box** to secure the screws from **HARDWARE BAG A.** to the step. **DO NOT USE A DRILL OR SCREW GUN — THIS WILL DAMAGE THE STEP.**



- Begin attaching step 3 and 4 together using the stainless steel screws and washers from hardware bag A.

STEP 4 - CONT.



- Make sure you fasten step 4 to step 3 in all 4 points using the stainless steel washers with each screw.

Washer must be between screw head and step.

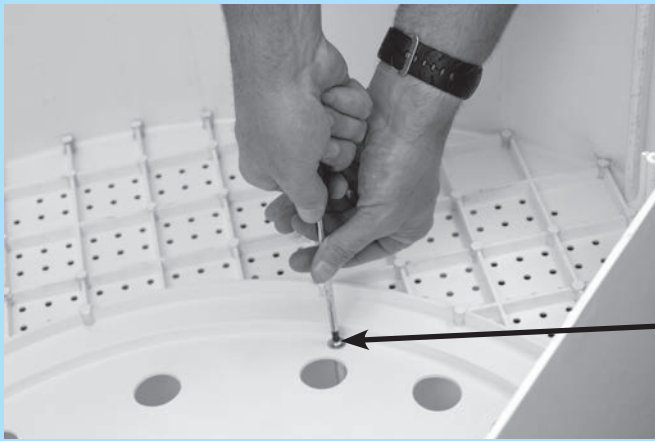
STEP 5

- Use the screwdriver provided with your “Wedding Cake Step ”. **DO NOT USE A DRILL OR SCREW GUN.**



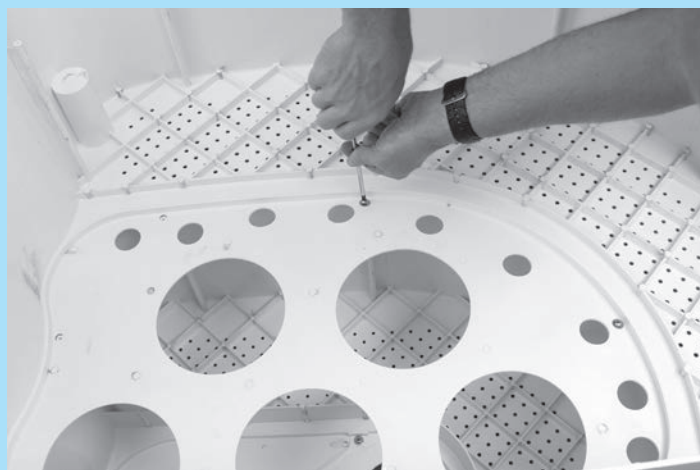
- Now you are ready to attach the next step. Place step 2 (NEP1026) upside down on top of the 2 steps you have already assembled. Be certain to line up the 6 screw holes in step 3 with the corresponding holes in step 2.

STEP 6



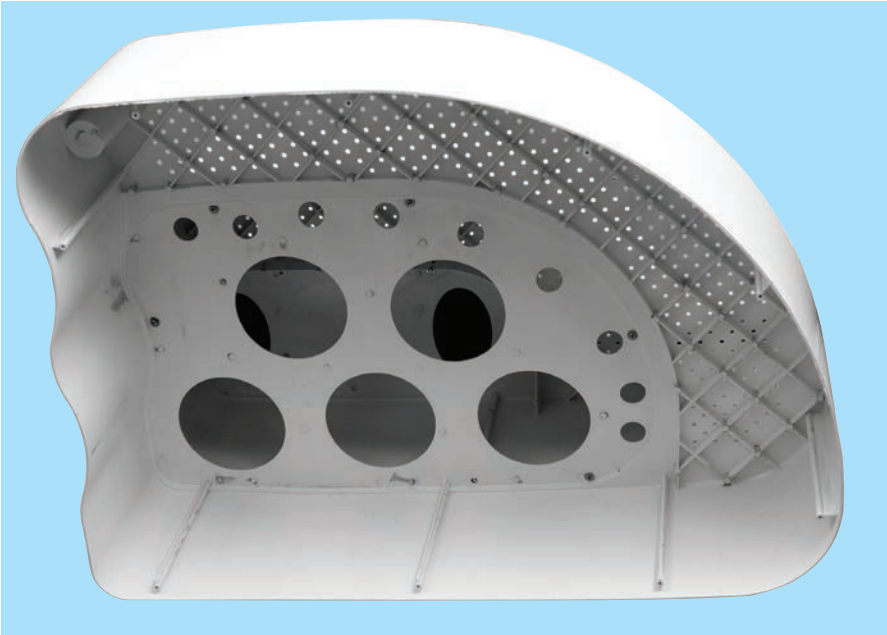
- Make sure you fasten step 3 to step 2 at all 6 points using a stainless steel washer with each screw.

- Be sure to use a stainless steel washer on each and every screw.



- Be sure to secure step 3 to the assembly using all 6 stainless steel screws and washers.

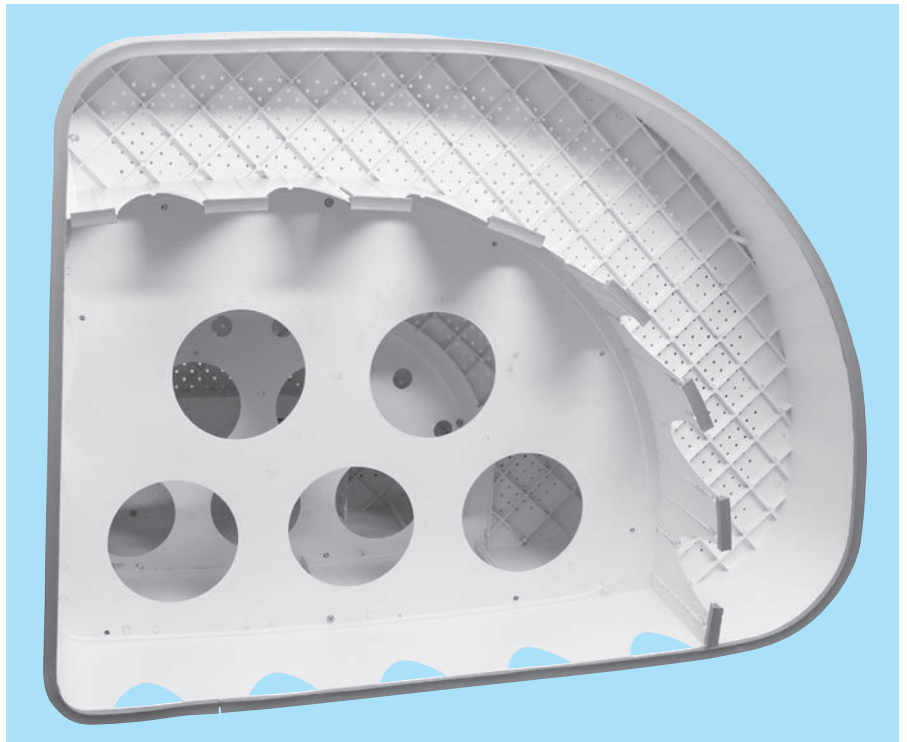
STEP 7



- Once the 3 steps have been assembled you are ready to attach the base step - Step 1 (NEP1027) to the assembly. To do this, turn the steps you have assembled on its side

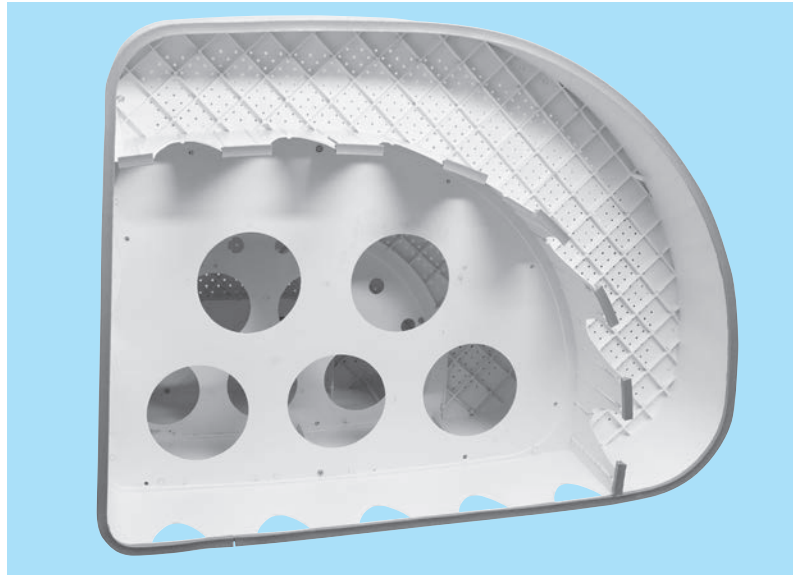
- Take the base step — Step 1 and place it on its side.
- Carefully inspect the Liner protection gasket. Make sure it is secure to the step at all contact points.

If gasket is loose, it can be re-secured using a small amount of PVC cement.



STEP 8

- Align the screw holes in the base step 1 with the screw holes at the bottom of step 3. Be sure to line up the 9 screw holes in step 3 with the corresponding holes in the base step



- Once the 9 holes are lined up secure the base step to the step assembly until all 9 screws are in place along with the stainless steel washers. Be sure to hand tighten only using the screw driver that comes with the step.

- Stand the step up in its upright position



STEP 9

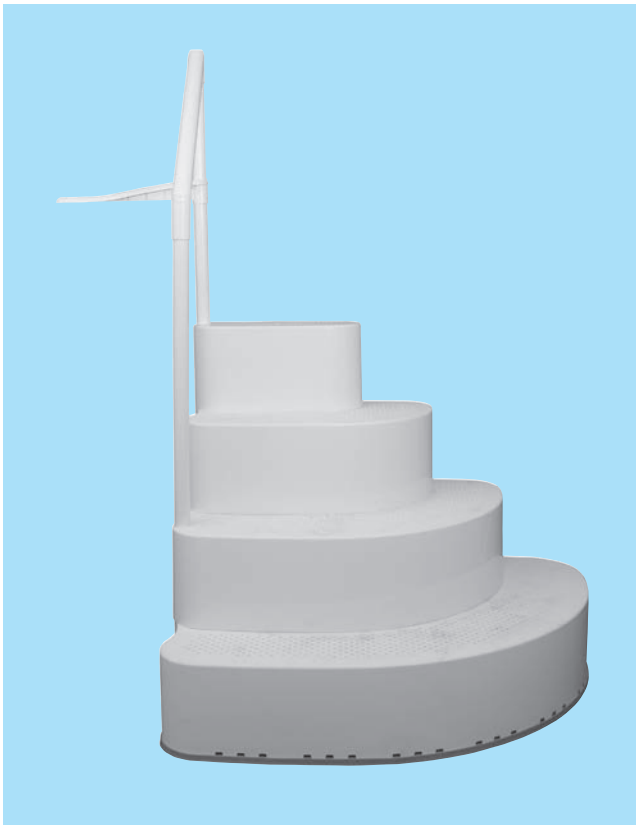
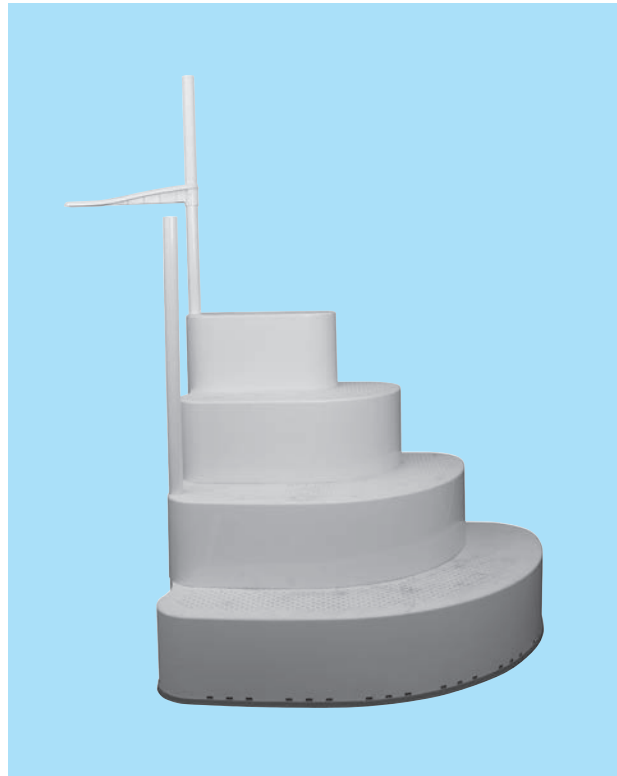
- You are now ready to attach the hand rails. Locate the short post (NEP1015) and slide it into the post socket located on the top step.



- Locate the deck flange (NEP1018) and slide it onto the short post you just attached to the top step.
- Using one of the stainless steel screws from Hardware bag B secure the short post to the step. To do this first attach the screw cap to the stainless steel screw by sliding the screw thru the hole in the cap assembly so the screw head fits snugly inside the cap base. Then secure the screw to the step and into the post using the screw hole located on the side of the top step by the post socket

STEP 10

- Locate the long post (NEP1016) and slide it into the post socket located in step 2.
- Using one of the stainless steel screws from Hardware bag B secure the long post to the step. To do this first attach the screw cap to the stainless steel screw by sliding the screw thru the hole in the cap assembly so the screw head fits snugly inside to cap base. Then secure the screw to the step and into the post using the screw hole located on the side of step 3 by the post socket



- Locate the hand rail (NEP1017). The hand rail has 2 sockets — one on either end— to allow the post to slide into. The shorter to the 2 handrail sockets slides over the short post located at the top of the step, the other handrail socket fits over the top of the long post. Secure the handrail to each post using the stainless steel screws from Hardware bag B. To do this first attach the screw cap to the stainless steel screw by sliding the screw thru the hole in the cap assembly so the screw head fits snugly inside to cap base. Then secure the screw to the handrail and into the post using the screw hole located on the handrail.

INSTALLING YOUR STEP

Once you have completed the assembly of your step you are ready to place in your pool. This will require 2 people to both carry the assembled step to the desired location and to lift the step over the pool wall and lower it in position.

Even though the Wedding Cake Step has built in liner protection it is recommended that you use model NA402 Deluxe Step Pad to protect your liner.

STEP 1

Select a location in your pool for the step. Keep in mind the levelness of the pool floor is a factor in selection of the step location. Choose an area that is level for best results.

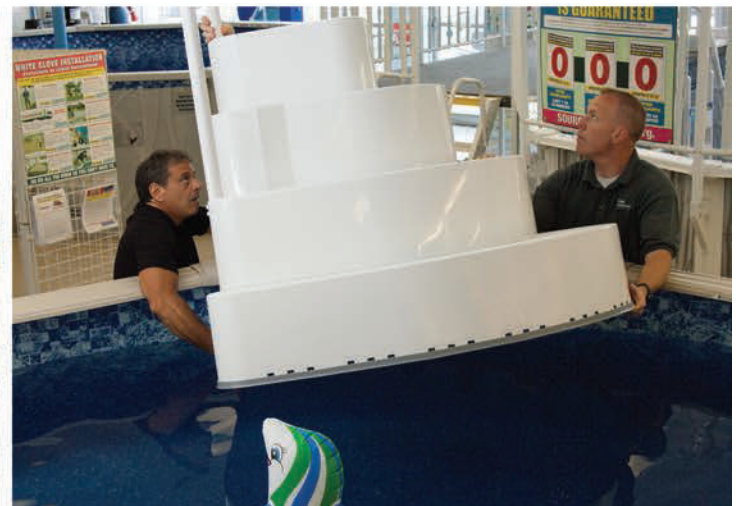
STEP 2

Clear the path to the step location from all obstructions.

STEP 3

With assistance bring the step to the location where you want to install it. Face the step towards the pool.

STEP 4



Carefully lift the step over the pool top rail and gently lower the step into the pool. This will take a few minutes since the trapped air in the step will need to escape through the vent holes as the step lowers into its final position.

STEP 5



Once the step is resting on the pool floor you are ready to secure the deck flange to your pool side decking. Using the hardware from BAG C.



STEP 6

The deck brace is designed for use in decking that is located at the same level as the pool top rails or higher. Simply slide the flange down to the deck surface and secure it with the stainless steel hardware from bag C.

NOTE If your decking is lower than the pool top rails you will need to secure an additional piece of decking (wood) to raise the deck surface under the deck flange. Secure the “shim” to the existing deck before attaching the deck flange to the shim.

WEDDING CAKE STEP COMPONENTS

NEP1017

NEP1015

NEP1018

NEP1016

HARDWARE BAGS

NEP1024

STEP ASSEMBLY
NEP1007

NEP1025

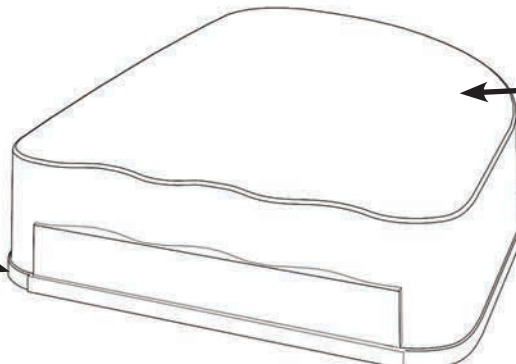
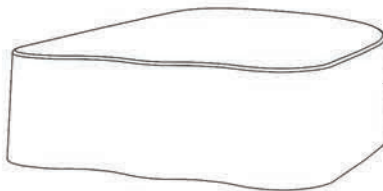
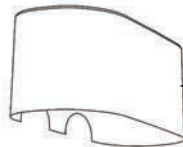
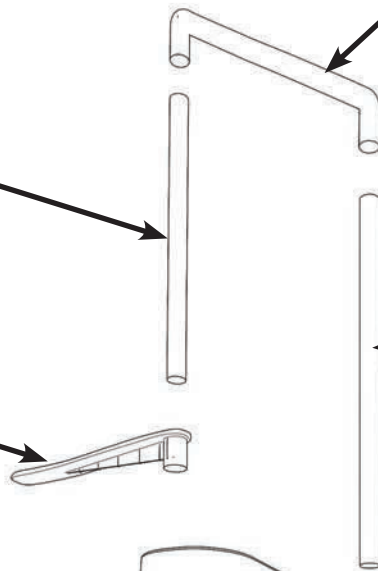
HAND RAIL
NEP1008

DECK BRACE
NEP1009

NEP1026

NEP1027

NEP1019



SAFETY INFORMATION

- When lifting heavy or awkward loads, it is suggested that two people lift to avoid injury.
- DO NOT use the pool entry system for any purpose other than that for which it is intended.
- Maximum weight on steps should NOT exceed 500 lbs.



WARNING Exceeding the recommended weight limit may cause the step to fail and may result in injury.

MAINTENANCE

- Step/ladder/bridges must be removed for winter, failure to do so can cause the step to crack.
- When removing step/ladder/bridges for winter, it is recommended that you spray down step with hose water to rinse off any chemical residual prior to storing.
- When storing step/ladder/bridges for winter, it should be protected from the elements and stored either in a shed or garage, or covered with a tarp.