



Illustrated Parts List

Portable Generator



This generator is rated in accordance with CSA (Canadian Standards Association) standard C22.2 No. 100-94 (motor and generators).

Questions? Help is just a moment away!
Preguntas? La ayuda es justa un momento lejos!

Call: Portable Generator Helpline

Llame: Línea Directa del Generador portátil - 1-800-732-2989 M-F 8-5 CST

Model / Modelo

Mfg. No.	Description / Descripción
030622-00	5,000 Watt Briggs & Stratton

Manual Part No. 1758209

Revision A

Rev. Date: 3/3/2014

Not for
Reproduction

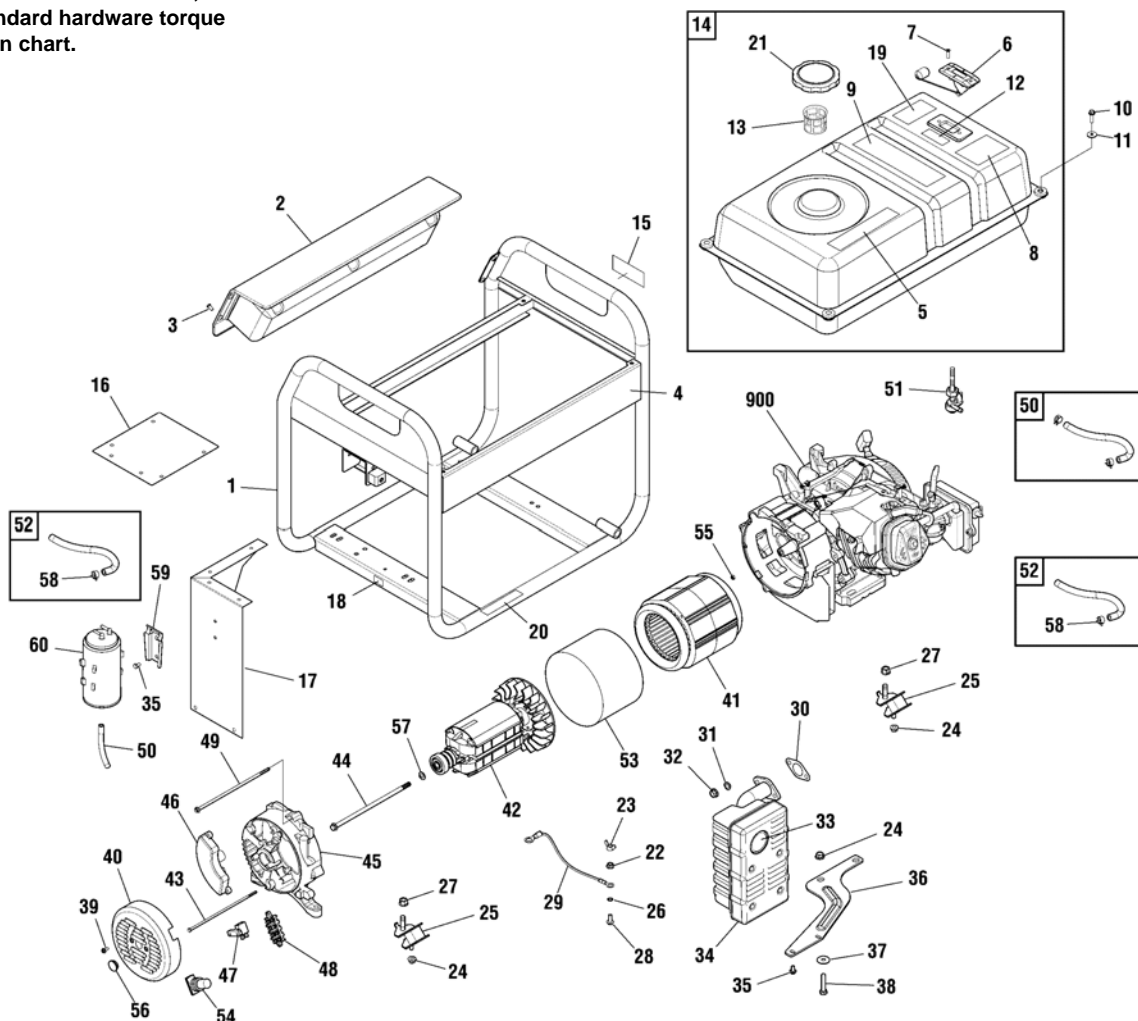
PRODUCT COMPONENTS	PAGES
Main Unit	4
Control Panel	6
Wheel Kit	7
Torque Specification Chart	Inside Back Cover

Not for
Reproduction

Main Unit

80007531

NOTE: Unless noted otherwise, use the standard hardware torque specification chart.



REF.	PART NO.	DESCRIPTION	REF.	PART NO.	DESCRIPTION
1	705502	CRADLE	18	704331	DECAL
2	705499	PANEL-CONTROL	19	705545	DECAL
3	703804	SCREW	20	319066GS	DECAL
4	705500	DECAL	21	319587GS	CAP-FUEL
5	319065GS	DECAL	22	----	* NUT, Flange Lock, M6
6	704183	GAUGE-FUEL	23	87680GS	NUT
7	314440GS	SCREW	24	----	* NUT, Flange Lock, M8
8	202997GS	DECAL	25	319451GS	MOUNT-VIBRATION
9	319064GS	DECAL	26	----	* WASHER, Shakeproof, Ext M6
10	703805	SCREW	27	----	* NUT, Flange Lock, M10
11	312005GS	WASHER	28	----	* SCREW, Flange, M6 x 16
12	703264	DECAL	29	312040GS	WIRE
13	705504	FILTER-FUEL	30	813085GS	GASKET
14	705520	TANK-FUEL	31	----	* WASHER, Lock, M8
15	704142	DECAL	32	----	* NUT, Hex, M8 1.25
16	705489	HEATSHIELD	33	83083GS	SCREEN
17	705503	HEATSHIELD			

Footnotes

* Items without part numbers are common fasteners and are available at your local hardware store.

** Contact Engine Manufacturer

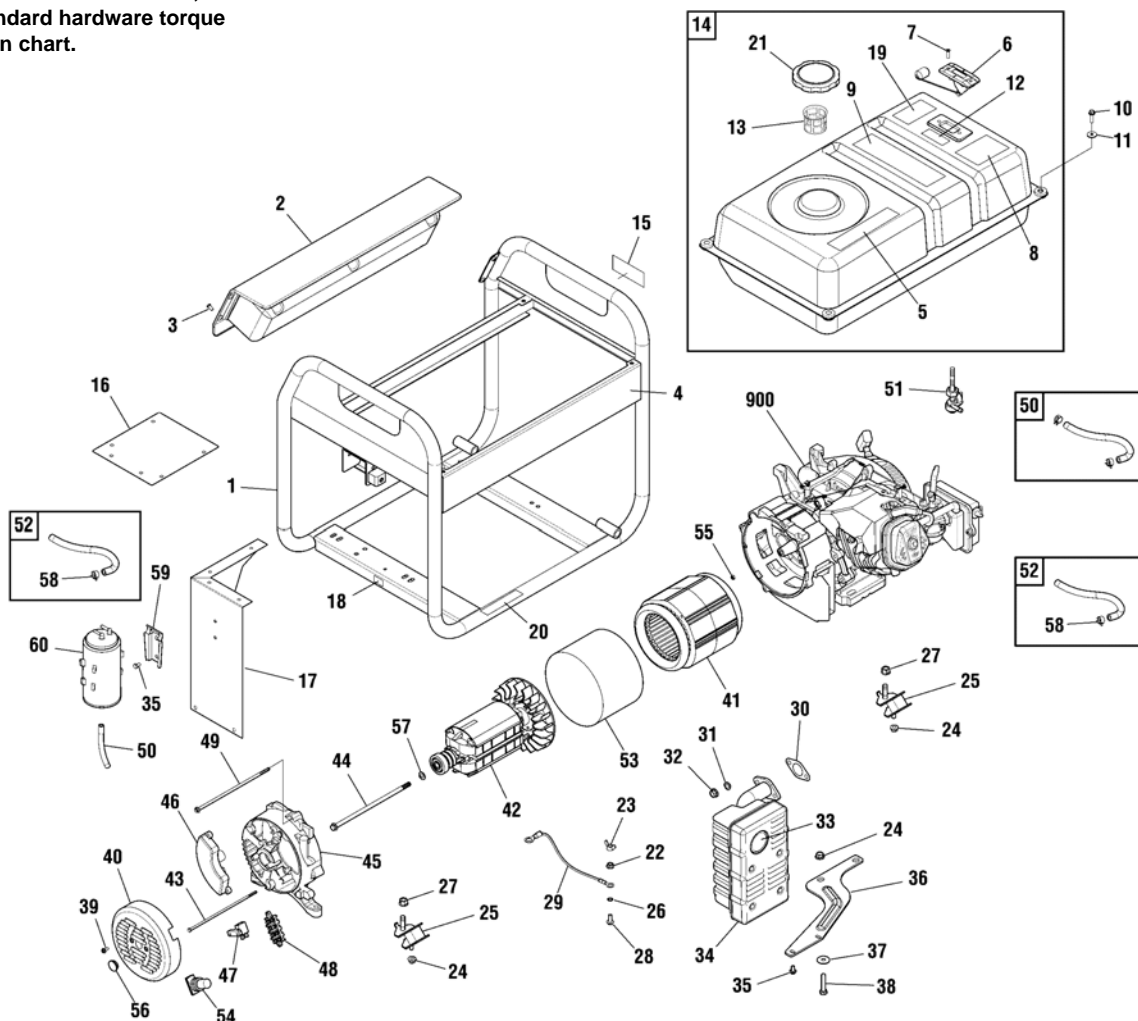
The above parts group applies to the following Mfg. Nos.:

030622-00 - 5,000 Watt Briggs & Stratton

Main Unit

80007531

NOTE: Unless noted otherwise, use the standard hardware torque specification chart.



REF.	PART NO.	DESCRIPTION	REF.	PART NO.	DESCRIPTION
34	192569GS	MUFFLER	51	209417GS	VALVE-FUEL
35	-----	* SCREW, Flange, M6 x 12	52	315017GS	HOSE-VAPOR (Cut to Fit)
36	705501	BRACKET-MUFFLER	53	317342GS	BAND-STATOR
37	-----	* WASHER, Flat, M8	54	207879GS	BOOT
38	57821GS	CAPSCREW-HEX HEAD, M8-1.25 x 40	55	207878GS	NUT
39	207824GS	SCREW	56	315802GS	CAP
40	207823GS	END COVER	57	207826GS	WASHER
41	704140	STATOR	58	314955GS	CLAMP
42	704202	ROTOR	59	318884GS	BRACKET
43	317340GS	BOLT	60	209044GS	CARB CANISTER
44	317341GS	BOLT	900	-----	** ENGINE
45	207838GS	CARRIER-BEARING			
46	207840GS	VOLTAGE REGULATOR			
47	207827GS	BRUSH ASSY			
48	316945GS	TERMINAL BLOCK			
49	317338GS	BOLT			
50	791745	KIT-FUEL HOSE (Cut to Fit)			

Footnotes

* Items without part numbers are common fasteners and are available at your local hardware store.

** Contact Engine Manufacturer

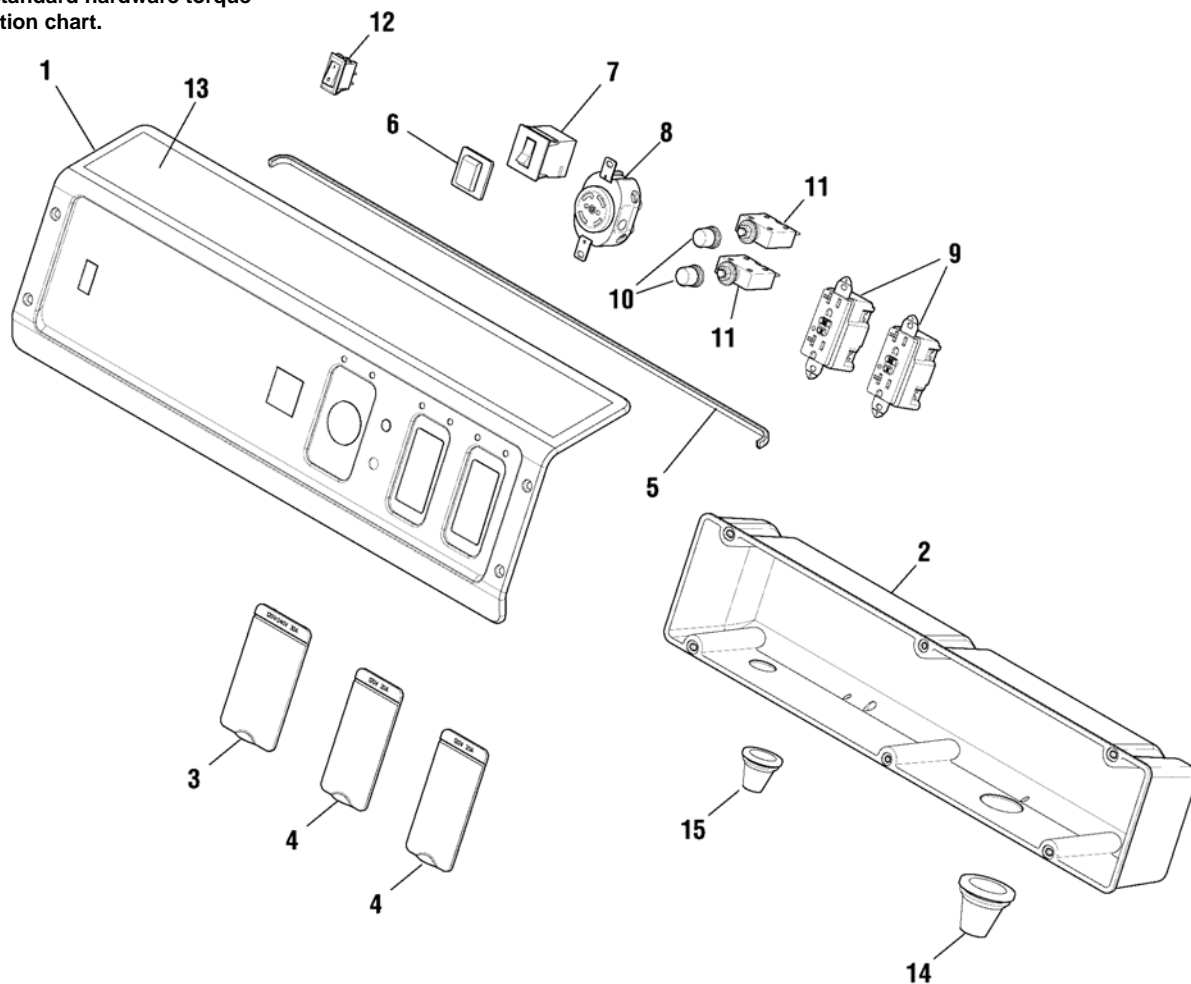
The above parts group applies to the following Mfg. Nos.:

030622-00 - 5,000 Watt Briggs & Stratton

Control Panel

80007534

NOTE: Unless noted otherwise, use the standard hardware torque specification chart.



REF. PART NO.	DESCRIPTION	REF. PART NO.	DESCRIPTION
1	705522	PANEL-CONTROL	
2	319458GS	BOX-CONTROL PANEL	
3	319477GS	COVER-OUTLET	
4	319476GS	COVER-OUTLET	
5	319459GS	TRIM-EDGE	
6	191481GS	BOOT	
7	704197	BREAKER-CIRCUIT	
8	43437GS	OUTLET-120/240V TL30A	
9	80409GS	OUTLET-120V 20A	
10	312636GS	BOOT-CIRCUIT BREAKER	
11	209872GS	BREAKER-CIRCUIT 20A	
12	319525GS	SWITCH-ON/OFF	
13	705519	DECAL	
14	319529GS	GROMMET	
15	319530GS	GROMMET	

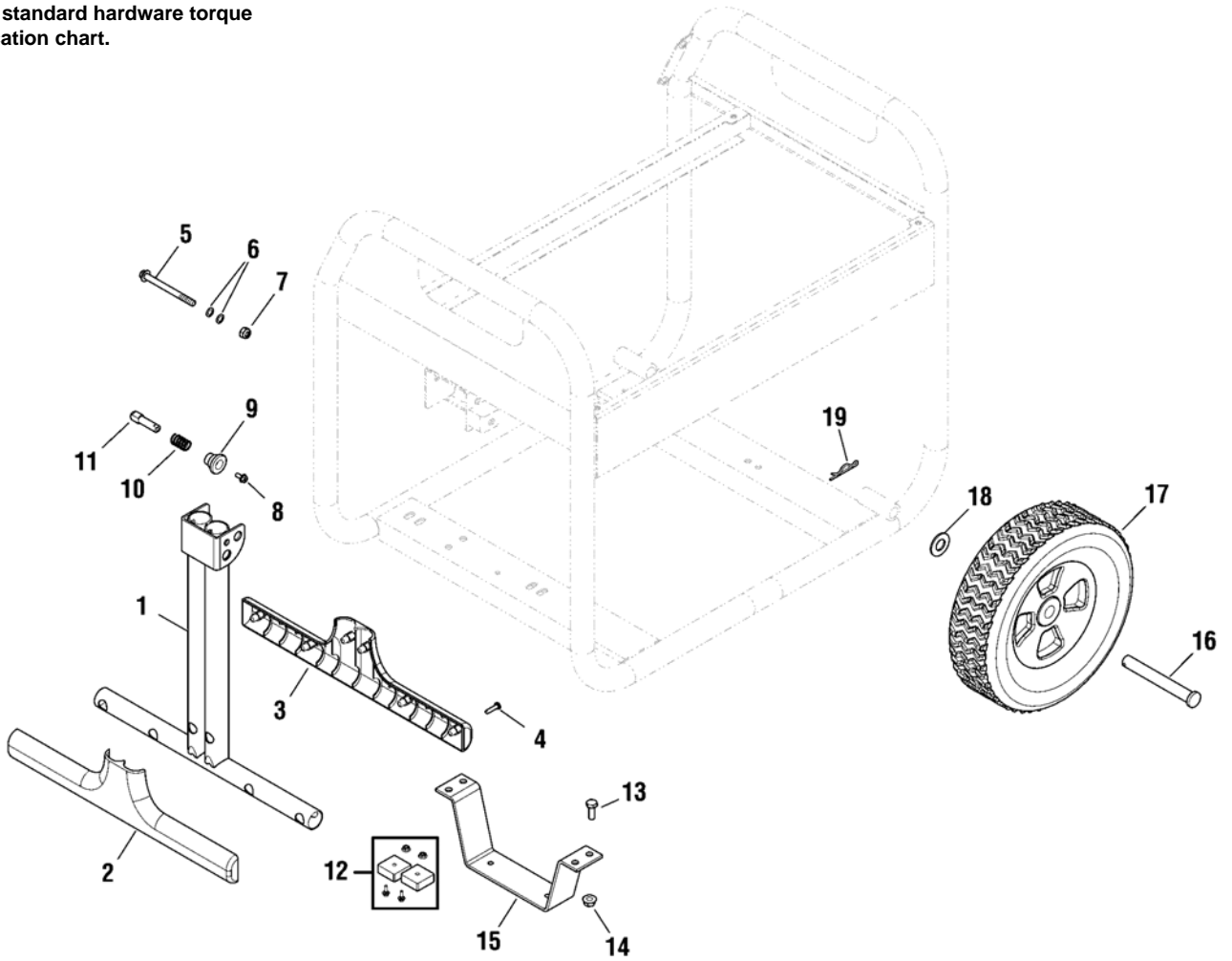
Footnotes

The above parts group applies to the following Mfg. Nos.:
030622-00 - 5,000 Watt Briggs & Stratton

Wheel Kit

80006254

NOTE: Unless noted otherwise, use the standard hardware torque specification chart.



REF. PART NO.	DESCRIPTION	REF. PART NO.	DESCRIPTION
1	319396GS HANDLE	18	22247GS WASHER
2	319360GS GRIP-HANDLE	19	316510GS PIN-HAIR
3	319361GS GRIP-HANDLE		
4	75477GS SCREW		
5	318677GS BOLT		
6	96716GS WASHER		
7	49820GS NUT		
8	207825GS BOLT		
9	319453GS KNOB		
10	319452GS SPRING		
11	319454GS PIN		
12	319285GS MOUNT-VIBRATION		
13	39253GS BOLT		
14	67989GS NUT		
15	704198 SUPPORT-LEG		
16	703813 AXLE		
17	704145 WHEEL		

Footnotes

The above parts group applies to the following Mfg. Nos.:
030622-00 - 5,000 Watt Briggs & Stratton

Not for
Reproduction

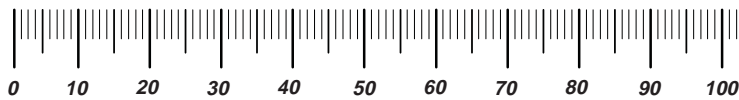
Not for
Reproduction

Not for
Reproduction

Hardware Identification & Torque Specifications

Torque Specification Chart								
FOR STANDARD METRIC MACHINE HARDWARE (Tolerance ± 20%)								
Property Class	5.6		8.8		10.9		12.9	
	Class 5.6		Class 8.8		Class 10.9		Class 12.9	
Size Of Hardware	in/lbs		in/lbs		in/lbs		in/lbs	
	ft/lbs	Nm.	ft/lbs	Nm.	ft/lbs	Nm.	ft/lbs	Nm.
M3	5.88	.56	13.44	1.28	19.2	1.80	22.92	2.15
M4	13.44	1.28	30.72	2.90	43.44	4.10	52.56	4.95
M5	26.4	2.50	60.96	5.75	5.97	8.10	7.15	9.7
M6	44.64	4.3	7.3	9.9	10.3	14	12.1	16.5
M7	5.2	7.1	12.1	16.5	16.9	23	19.9	27
M8	7.7	10.5	17.7	24	25	34	29	40
M10	15	21	35	48	50	67	59	81
M12	26	36	61	83	86.2	117	103	140
M14	42	58	101	132	136	185	162	220
M16	64	88	147	200	210	285	250	340
M18	89	121	202	275	287	390	346	470
M20	126	171	290	390	405	550	486	660
M22	169	230	390	530	559	745	656	890
M24	217	295	497	375	708	960	840	1140
M27	320	435	733	995	1032	1400	1239	1680
M30	435	590	995	1350	1401	1900	1681	2280
M33	590	800	1349	1830	1902	2580	2278	3090
M36	759	1030	1740	2360	2441	3310	2935	3980
M39	988	1340	2249	3050	3163	4290	3798	5150

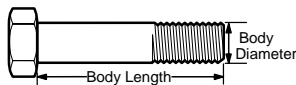
The guides and ruler furnished below are designed to help you select the appropriate hardware.



Nut, M8

Thread Diameter (mm)
Inside Diameter (in)
Threads per inch

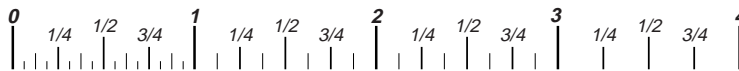
Nut, 1/2-16



Screw, M8- 1.25 x 25

Thread Diameter (mm)
Body Diameter
Distance between threads (mm)
Threads per inch
Body Length (mm)
Body Length (in)

Screw, 1/2- 16 x 2



Standard Hardware Sizing

When a washer or nut is identified as 1/2" (M8), this is the *Nominal size*, meaning the *inside diameter* is 1/2 inch (8mm metric thread diameter); if a second number is present it represents the *threads per inch* (distance between threads).

When bolt or capscrew is identified as 1/2 - 16 x 2" (M8 - 1.25 x 50), this means the *Nominal size*, or body diameter is 1/2 inch (8mm metric thread diameter), the second number, 16, represents the *threads per inch*, (1.25 thread diameter). The final number is the body length of the bolt or screw, 2 inches (50mm).

Torque Specification Chart						
FOR STANDARD MACHINE HARDWARE (Tolerance ± 20%)						
Hardware Grade	No Marks		SAE Grade 5		SAE Grade 8	
	SAE Grade 2		SAE Grade 5		SAE Grade 8	
Size Of Hardware	in/lbs		in/lbs		in/lbs	
	ft/lbs	Nm.	ft/lbs	Nm.	ft/lbs	Nm.
8-32	19	2.1	30	3.4	41	4.6
8-36	20	2.3	31	3.5	43	4.9
10-24	27	3.1	43	4.9	60	6.8
10-32	31	3.5	49	5.5	68	7.7
1/4-20	66	7.6	8	10.9	12	16.3
1/4-28	76	8.6	10	13.6	14	19.0
5/16-18	11	15.0	17	23.1	25	34.0
5/16-24	12	16.3	19	25.8	29	34.0
3/8-16	20	27.2	30	40.8	45	61.2
3/8-24	23	31.3	35	47.6	50	68.0
7/16-14	30	40.8	50	68.0	70	95.2
7/16-20	35	47.6	55	74.8	80	108.8
1/2-13	50	68.0	75	102.0	110	149.6
1/2-20	55	74.8	90	122.4	120	163.2
9/16-12	65	88.4	110	149.6	150	204.0
9/16-18	75	102.0	120	163.2	170	231.2
5/8-11	90	122.4	150	204.0	220	299.2
5/8-18	100	136	180	244.8	240	326.4
3/4-10	160	217.6	260	353.6	386	525.0
3/4-16	180	244.8	300	408.0	420	571.2
7/8-9	140	190.4	400	544.0	600	816.0
7/8-14	155	210.8	440	598.4	660	897.6
1-8	220	299.2	580	788.8	900	1,244.0
1-12	240	326.4	640	870.4	1,000	1,360.0

NOTES

- These torque values are to be used for all hardware excluding: locknuts, self-tapping screws, thread forming screws, sheet metal screws and socket head setscrews.
- Recommended seating torque values for locknuts:
 - for prevailing torque locknuts - use 65% of grade 5 torques.
 - for flange whizlock nuts and screws - use 135% of grade 5 torques.
- Unless otherwise noted on assembly drawings, all torque values must meet this specification.

Common Hardware Types

Hex Head Capscrew



Washer



Lockwasher

Carriage Bolt



Hex Nut

Wrench & Fastener Size Guide

1/4" Bolt or Nut Wrench—7/16"	5/16" Bolt or Nut Wrench—1/2"	3/8" Bolt or Nut Wrench—9/16"	7/16" Bolt or Nut Wrench (Bolt)—5/8" Wrench (Nut)—11/16"	1/2" Bolt or Nut Wrench—3/4"
M6 Bolt or Nut Wrench—10mm	M8 Bolt or Nut Wrench—13mm	M10 Bolt or Nut Wrench—17mm	M12 Bolt or Nut Wrench—19mm	M14 Bolt or Nut Wrench—22mm



Not for
Reproduction

Briggs & Stratton Power Products Group

Copyright© 2014 Briggs & Stratton Power Products Group. All rights reserved. No part of this page can be reproduced or transmitted in any form by any means without the express written permission of Briggs & Stratton Power Products Group.