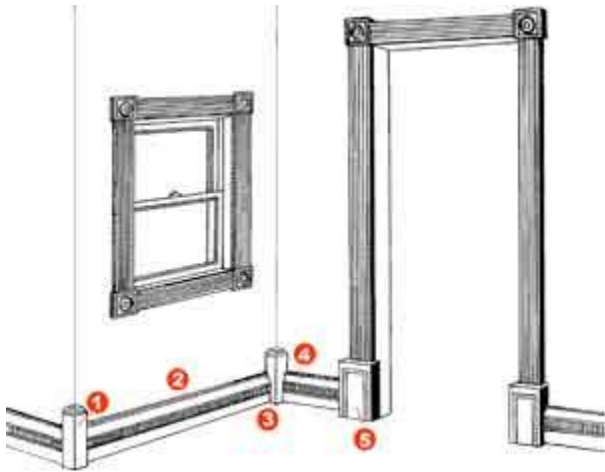


## How to Install Base Moulding & Blocks

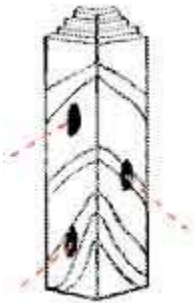
To install base moulding and blocks you will need a power drill and a 3/32-inch drill bit, hammer and 2-inch finishing nails, a hand and/or power saw, putty or wood filler, counter sinker, measuring tape, pencil and safety glasses.



**(A)** If possible install base moulding first when trimming a room with Fara moulding. After the base is installed, you will have a convenient starting place when you trim the doorways.

---

**(B)** Paint or stain the moulding and blocks before installing them. This will save time and ensure a “professional” looking job.

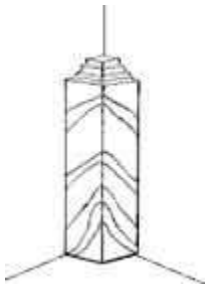


**(C)** Start at a corner and then work around the room installing the base moulding and blocks as you come to them. First drill three 3/32” holes in the outside corner block.

---

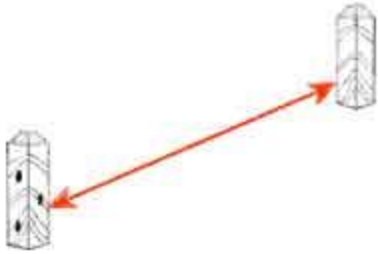
**(D)** Position block on corner of wall (see #1 in illustration at top of page). The groove in the back of the block automatically positions it correctly on the wall. Nail in place with 2” finish nails.

---



**(E)** Place inside corner block tightly in corner (see #3 in illustration at top of page). Measure the distance from the outside corner to the inside corner (see #1 and #3 in illustration at top of page).

---



**(F)** Cut piece of base moulding (#2) to this length. Use simple straight cuts.

---

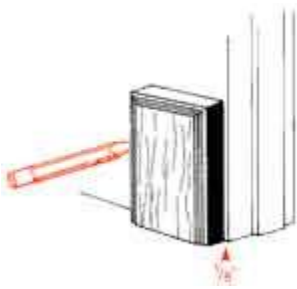


**(G)** Drill  $3/32$ " holes in base moulding and inside corner block.

---

**(H)** Position base moulding and inside corner in place. Push base tightly against outside corner (see #1 and #2 in illustration at top of page). Nail base moulding in place with finish nails, starting at outside corner and moving toward inside corner. Push inside corner tightly against base moulding (see #3 in illustration above). Nail in place.

---



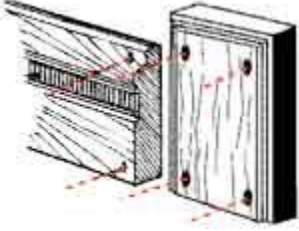
**(I)** Position plinth block at base of door jamb (see #5 in illustration at top of page). Set plinth block approximately  $1/8$ " back from jamb. Mark wall with pencil line on left side of plinth.

---



**(J)** Measure distance between inside corner block (#3) and pencil line.

---



**(K)** Cut base moulding to this length using straight cuts. Drill holes in base and plinth.

---

**(L)** Push base moulding (#4) tight against inside corner. Nail base in place starting at inside corner and moving toward plinth block. Push plinth tight against base; nail in place.

---

**(M)** Continue this same procedure around room until complete.

---

**(N)** Fill nail holes and any gaps with putty or wood filler of matching color (use smallest amount possible for a neat job). Then carefully touch up with paint or stain, only where necessary.

---

Important:

Be sure to use a smooth-face finishing hammer to drive nails.

Do not pound nails in all the way with hammer alone — use a nail set for the last 1/8", counter sink nail head 1/16" so that wood filler can be applied later to hide nail head.