

# Installation Instructions

## WB49X20204(A) GE Gray Badge

### Purpose

To provide instructions to replace the current GE badge with the new larger badge on top freezer model GTZ18G only.

Parts for other models can be ordered through GE Parts at 800-528-8684.



### Installation Procedure

Using the plastic putty knife, carefully pry away the current GE badge from the product (Figure A).

***Do not use any tool other than a plastic putty knife as other tools may scratch the surface of the product.***

Once the badge has been removed (Figure B), use the plastic putty knife to gently scrape away any remaining adhesive (Figure C).

#### Clean surface around old badge

If needed, use Goo Gone to clean and remove any surface oils or debris that may prevent proper adhesion of the new badge.

#### Test badge fit

Before removing the paper from adhesive backing, place the new badge directly over the area where the old badge was positioned. Check to be sure the new badge rests flat and evenly against the product. The new badge must fit flat to bond properly to the product.

**Note:** If the gray badge is damaged call the GE Parts department at 800-528-8684 to order a new part. Make sure to have the model number of the product available.

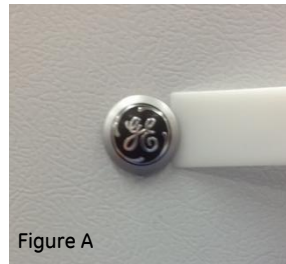


Figure A

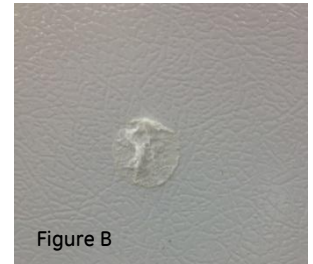


Figure B

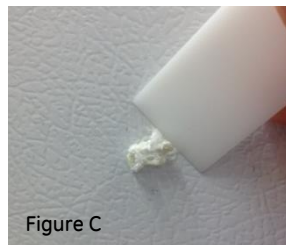


Figure C



Figure D

### Install the new badge

Peel off the paper from adhesive backing and carefully align the new badge directly over the area where the previous badge was positioned.

Check to make certain the new badge is correctly aligned on all sides.

Once proper alignment is achieved, apply pressure evenly to the badge and hold against the product for at least 10 seconds. Press around the circumference of the new badge to ensure proper adhesive bond.

Check to ensure the badge fits flat, with no gaps and is securely seated against the product.

**Note:** If the new gray badge must be removed for any reason after the adhesive backing has bonded, a new gray badge should be ordered.

This part is for use on GE top freezer model GTH18G and GTZ18G only. Other badges can be ordered through GE Parts at 800-528-8684. Make sure to have the model number of the product available.



Front

Back