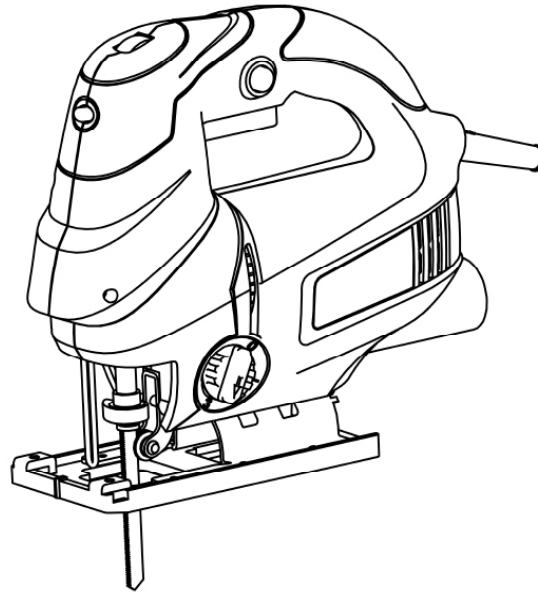




VARIABLE SPEED JIG SAW



For replacement
parts visit
WENPRODUCTS.COM

Model # 3602
bit.ly/wenvideo


IMPORTANT:

Your new tool has been engineered and manufactured to WEN's highest standards for dependability, ease of operation, and operator safety. When properly cared for, this product will supply you years of rugged, trouble-free performance. Pay close attention to the rules for safe operation, warnings, and cautions. If you use your tool properly and for intended purpose, you will enjoy years of safe, reliable service.



NEED HELP? CONTACT US!

Have product questions? Need technical support?
Please feel free to contact us at:

 **800-232-1195** (M-F 8AM-5PM CST)

 techsupport@wenproducts.com

 **WENPRODUCTS.COM**

TABLE OF CONTENTS

Technical Data	2
General Safety Rules	3
Specific Safety Rules For Jig Saw	4
Electrical Information	5
Know Your Jig Saw.....	6
Assembly and Adjustments.....	7
Operation	9
Maintenance	10
Exploded View and Parts List	11
Warranty	13

TECHNICAL DATA

Model Number:	3602
Motor:	120 V, 60 Hz, 6A
Speed:	800 - 3,000 RPM
Cutting Wood Capacity:	4 in.
Cutting Metal Capacity:	3/8 in.
Weight:	5.1 lbs
Includes:	2 Blades

GENERAL SAFETY RULES

Safety is a combination of common sense, staying alert and knowing how your item works. **SAVE THESE SAFETY INSTRUCTIONS.**



WARNING: To avoid mistakes and serious injury, do not plug in your tool until the following steps have been read and understood.

1. **READ** and become familiar with this entire instruction manual. **LEARN** the tool's applications, limitations, and possible hazards.
2. **AVOID DANGEROUS CONDITIONS.** Do not use power tools in wet or damp areas or expose them to rain. Keep work areas well lit.
3. **DO NOT** use power tools in the presence of flammable liquids or gases.
4. **ALWAYS** keep your work area clean, uncluttered, and well lit. **DO NOT** work on floor surfaces that are slippery with sawdust or wax.
5. **KEEP BYSTANDERS AT A SAFE DISTANCE** from the work area, especially when the tool is operating. **NEVER** allow children or pets near the tool.
6. **DO NOT FORCE THE TOOL** to do a job for which it was not designed.
7. **DRESS FOR SAFETY.** Do not wear loose clothing, gloves, neckties, or jewelry (rings, watches, etc.) when operating the tool. Inappropriate clothing and items can get caught in moving parts and draw you in. **ALWAYS** wear non-slip footwear and tie back long hair.
8. **WEAR A FACE MASK OR DUST MASK** to fight the dust produced by sawing operations.



WARNING: Dust generated from certain materials can be hazardous to your health. Always operate the tool in a well-ventilated area and provide for proper dust removal. Use dust collection systems whenever possible.

9. **ALWAYS** remove the power cord plug from the electrical outlet when making adjustments, changing parts, cleaning, or working on the tool.
10. **KEEP GUARDS IN PLACE AND IN WORKING ORDER.**
11. **AVOID ACCIDENTAL START-UPS.** Make sure the power switch is in the **OFF** position before plugging in the power cord.
12. **REMOVE ADJUSTMENT TOOLS.** Always make sure all adjustment tools are removed from the saw before turning it on.
13. **NEVER LEAVE A RUNNING TOOL UNATTENDED.** Turn the power switch to **OFF**. Do not leave the tool until it has come to a complete stop.
14. **NEVER STAND ON A TOOL.** Serious injury could result if the tool tips or is accidentally hit. **DO NOT** store anything above or near the tool.

GENERAL SAFETY RULES

15. **DO NOT OVERREACH.** Keep proper footing and balance at all times. Wear oil-resistant rubber-soled footwear. Keep the floor clear of oil, scrap, and other debris.
16. **MAINTAIN TOOLS PROPERLY.** ALWAYS keep tools clean and in good working order. Follow instructions for lubricating and changing accessories.
17. **CHECK FOR DAMAGED PARTS.** Check for alignment of moving parts, jamming, breakage, improper mounting, or any other conditions that may affect the tool's operation. Any part that is damaged should be properly repaired or replaced before use.
18. **MAKE THE WORKSHOP CHILDPROOF.** Use padlocks and master switches and ALWAYS remove starter keys.
19. **DO NOT** operate the tool if you are under the influence of drugs, alcohol, or medication that may affect your ability to properly use the tool.
20. **USE SAFETY GOGGLES AT ALL TIMES** that comply with ANSI Z87.1. Normal safety glasses only have impact resistant lenses and are not designed for safety. Wear a face or dust mask when working in a dusty environment. Use ear protection such as plugs or muffs during extended periods of operation.

SPECIFIC RULES FOR JIG SAW



WARNING: Do not operate this tool until it is completely assembled and installed according to the instructions.

1. Wait for the cutter to stop before setting the tool down. An exposed rotating cutter may engage the surface, leading to possible loss of control and serious injury.
2. Hold the power tool by insulated gripping surfaces only in case the cutter contacts its own cord. Cutting a “live” wire may make exposed metal parts of the tool “live” and could give the operator an electric shock.
3. Secure the workpiece to a stable platform using clamps or another practical method. Holding the work by hand or against the body leaves it unstable and may lead to a loss of control.
4. Secure the material being cutted. Never hold it in your hand or across your legs. Small workpieces must be adequately secured so that the rotating jig saw blades don't pick them up during the forward motion of the jig saw. Unstable support causes the blades to bind, resulting in a loss of control and possible injury.
5. Always start the jig saw before the blade is in contact with the workpiece. Let the blade reach full speed before using the tool. The jig saw can vibrate or chatter and possibly kickback if the cutting speed is too slow.
6. Check the workpiece for nails. If there are nails, either remove them or set them well below intended finished surface. If the jig saw blades strike objects like nails it may cause serious personal injury from kickback.
7. Unplug the jig saw before changing accessories. Accidental start-ups may occur if the jig saw is plugged in during an accessory change. Before plugging the tool back in, check that the trigger lock is OFF.

SPECIFIC RULES FOR JIG SAW

8. After changing blades, rotate the blade cylinder (cutter drum) to make sure the blades don't hit any part of the blade head housing and that the blade locking screws are tight. Loose or misaligned blades have the potential to strike tool housing and damage the tool as well as cause possible injury.
9. Always hold the tool firmly with both hands for maximum control.
10. Never pull the jig saw backwards over the workpiece.
11. Do not put fingers or any objects into the chip ejector. Do not clean out chips while the tool is running. Contact with the blade drum will cause injury.
12. Remove the plug from power source before removing chips. The blades are hidden from view and you may be cut if the blade is contacted.
13. GFCI and personal protection devices such as electrician's rubber gloves and footwear will increase personal safety.
14. Keep handles and hands dry, clean and free from oil and grease. Slippery surfaces cannot safely maintain control of the power tool.
15. Develop a periodic maintenance schedule for your tool. When cleaning a tool be careful not to disassemble any portion of the tool. Internal wires may be misplaced or pinched and safety guard return springs may be improperly mounted.
16. Certain cleaning agents such as gasoline, carbon tetrachloride, ammonia, etc. may damage plastic parts.

ELECTRICAL INFORMATION

GROUNDING INSTRUCTIONS

IN THE EVENT OF A MALFUNCTION OR BREAKDOWN, grounding provides the path of least resistance for an electric current and reduces the risk of electric shock. This tool is equipped with an electric cord that has an equipment grounding conductor and a grounding plug. The plug **MUST** be plugged into a matching outlet that is properly installed and grounded in accordance with **ALL** local codes and ordinances.

DO NOT MODIFY THE PLUG PROVIDED. If it will not fit the outlet, have the proper outlet installed by a licensed electrician.

IMPROPER CONNECTION of the equipment grounding conductor can result in electric shock. The conductor with the green insulation (with or without yellow stripes) is the equipment grounding conductor. If repair or replacement of the electric cord or plug is necessary, **DO NOT** connect the equipment grounding conductor to a live terminal.

CHECK with a licensed electrician or service personnel if you do not completely understand the grounding instructions or whether the tool is properly grounded.

CAUTION: In all cases, make certain the outlet in question is properly grounded. If you are not sure, have a licensed electrician check the outlet.

ELECTRICAL INFORMATION



WARNING: This tool is for indoor use only. Do not expose to rain or use in damp locations.
 Guidelines for using extension cords

Make sure your extension cord is in good condition. When using an extension cord, be sure to use one heavy enough to carry the current your product will draw. An undersized cord will cause a drop in line voltage resulting in loss of power and overheating. The table below shows the correct size to be used according to cord length and nameplate ampere rating. When in doubt, use a heavier cord. The smaller the gauge number, the heavier the cord.

Make sure your extension cord is properly wired and in good condition. Always replace a damaged extension cord or have it repaired by a qualified person before using it.

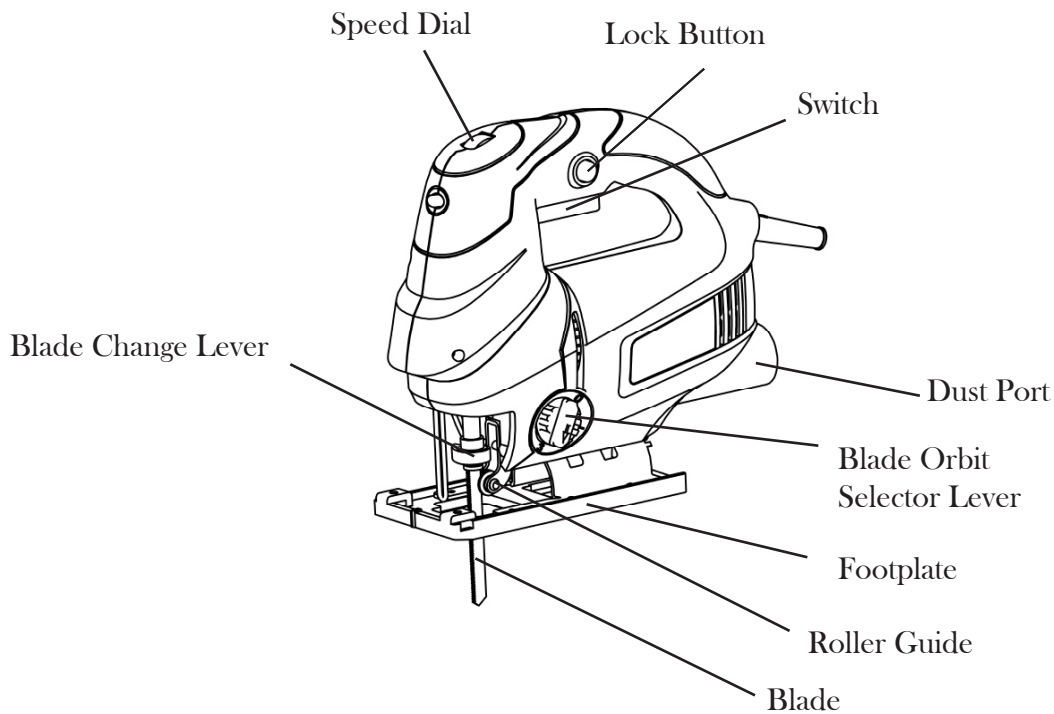
AMPERAGE	REQUIRED GAUGE FOR EXTENSION CORDS			
	25 ft.	50 ft.	100 ft.	150 ft.
6 A	18 gauge	16 gauge	14 gauge	12 gauge

Protect your extension cords from sharp objects, excessive heat and damp/wet areas.

Use a separate electrical circuit for your tools. This circuit must not be less than a #12 wire and should be protected with a 15 A time-delayed fuse. Before connecting the motor to the power line, make sure the switch is in the OFF position and the electric current is rated the same as the current stamped on the motor nameplate. Running at a lower voltage will damage the motor.

WARNING: This tool must be grounded while in use to protect the operator from electric shock.

KNOW YOUR JIG SAW



ASSEMBLY AND ADJUSTMENTS

REMOVING OR INSTALLING JIG SAW BLADE



WARNING: To avoid injury from accidental startups, turn switch OFF and remove the plug from the power source outlet before making any adjustments.



WARNING: These blade cannot and should not be re-sharpened.

WARNING: The jig saw blade is sharp and fragile and must be handled carefully to avoid injury to the user and damage to the blade.

Do not attempt to sharpen or use resharpened blades of any kind. Use only blades designated for use with this model, as other blades may not clamp securely in blade holder.

This jigsaw is equipped with a tool-less blade changing system for fast and easy changes of T-shank blades.

Note: This jigsaw does not accept U-shank blades.

WARNING: If the blade is not properly installed, then it may unexpectedly dislodge from the jigsaw during operation.

1. To remove a previously-used blade, pull the blade change lever until the blade ejects.

WARNING: Blade ejects forcefully when released. Direct away from yourself or bystanders.

2. Pull the blade change lever and insert the saw blade (make sure the teeth are aimed in the direction of the cut) until the “T” part of the blade shank is completely inserted into the blade clamp. When inserting the saw blade, the back of the blade must rest in the grooves in the roller guide.

3. After the blade change lever is released, it should spring back to its closed position.

4. Verify that the blade clamp has also returned to its closed position.

Note: If the saw blade cannot be inserted into the plunger, the slots of the blade holder are not in the correct position.

ASSEMBLY AND ADJUSTMENTS

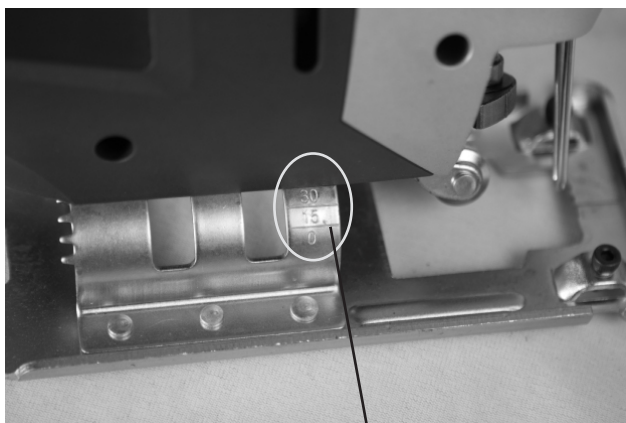
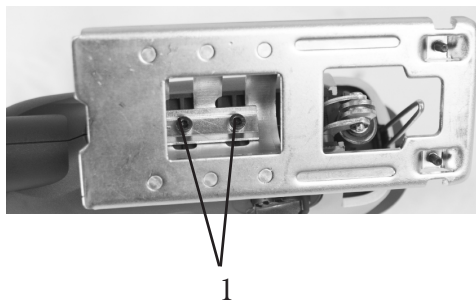
ADJUSTING THE FOOTPLATE FOR BEVEL CUTS

The footplate can be set to make either a straight cut or a left or right bevel cut at an angle of 45°.

1. Loosen the two screws on the underside of the base plate (1) until the base plate slides back and forth.
2. Pull the footplate forward to disengage the angle lock pin. Slide the shoe to the left or right and push it back into the 15°, 30° and 45° location. The angle will appear on the side of the base plate.
3. Tighten the two screws (1).

To reset the shoe plate for straight cuts:

1. Loosen the two screws on the underside of the base plate (1) until the base plate slides back and forth.
2. Pull the shoe forward, rotate to the center and push it back into the 0° location.
3. Tighten the two screws (1).



Angle Mark



Angle Lock Pin

OPERATION

PLUNGER SPEED

The required cutting speed or stroke rate depends on the material being cut, the type of blade being used, and the feed rate preferred by the operator. The best speed for a particular application is largely determined by experience though as a general rule, slower speeds are for denser materials and faster speeds for softer materials.

Note: that when the jigsaw is used at low speed settings for an extended length of time, the motor temperature will rise due to slower speeds of the internal cooling fan. In such cases, it is necessary to occasionally run the tool at full speed for a few minutes to keep the motor running at high efficiency.

VARIABLE SPEED DIAL

Your jig saw is equipped with a variable speed dial. The blade stroke rate may be adjusted during cutting operation by presetting the dial on or between any one of the six numbers.

Setting	Strokes per minute
1	800
2	1200
3	1700
4	2100
5	2600
6	3000

BLADE ORBIT SELECTOR LEVER

Maximum cutting efficiency can be obtained by adjusting the blade orbit selector lever to suit the material being cut. The following list will help you determine which setting to use for your application. This is intended as a guideline only; test cuts in scrap material should be performed first to determine the best setting.

Setting 0: hard materials such as metals or thin sheet metals. This setting can be used with knife blades, grit edge blades, rasp work and down cutting blades.

Setting 1: soft materials where cleaner cutting or delicate scrolling work is performed.

Setting 2: medium density materials such as harder woods or particle board.

Setting 3: soft materials such as wood, plastics, etc. and when fast cutting is more important than a clear cut.----

MAINTENANCE

SERVICE: Preventive maintenance performed by unauthorized personnel may result in misplacing of internal wires and components, possibly causing a serious hazard. We recommend that all tool service be performed by a WEN Service Center or Authorized WEN Service Station.

TOOL LUBRICATION: Your tool has been properly lubricated and is ready to use. It is recommended that tools with gears be regreased with a special gear lubricant at every brush change.

CARBON BRUSHES: The brushes in your tool have been engineered for many hours of dependable service. To maintain peak efficiency of the motor, we recommend examining the brushes every two to six months. Only genuine WEN replacement brushes designed specifically for your tool should be used.

BEARINGS: Bearings that become noisy (due to heavy load or abrasive material cutting) should be replaced as soon as possible to avoid overheating or motor failure.

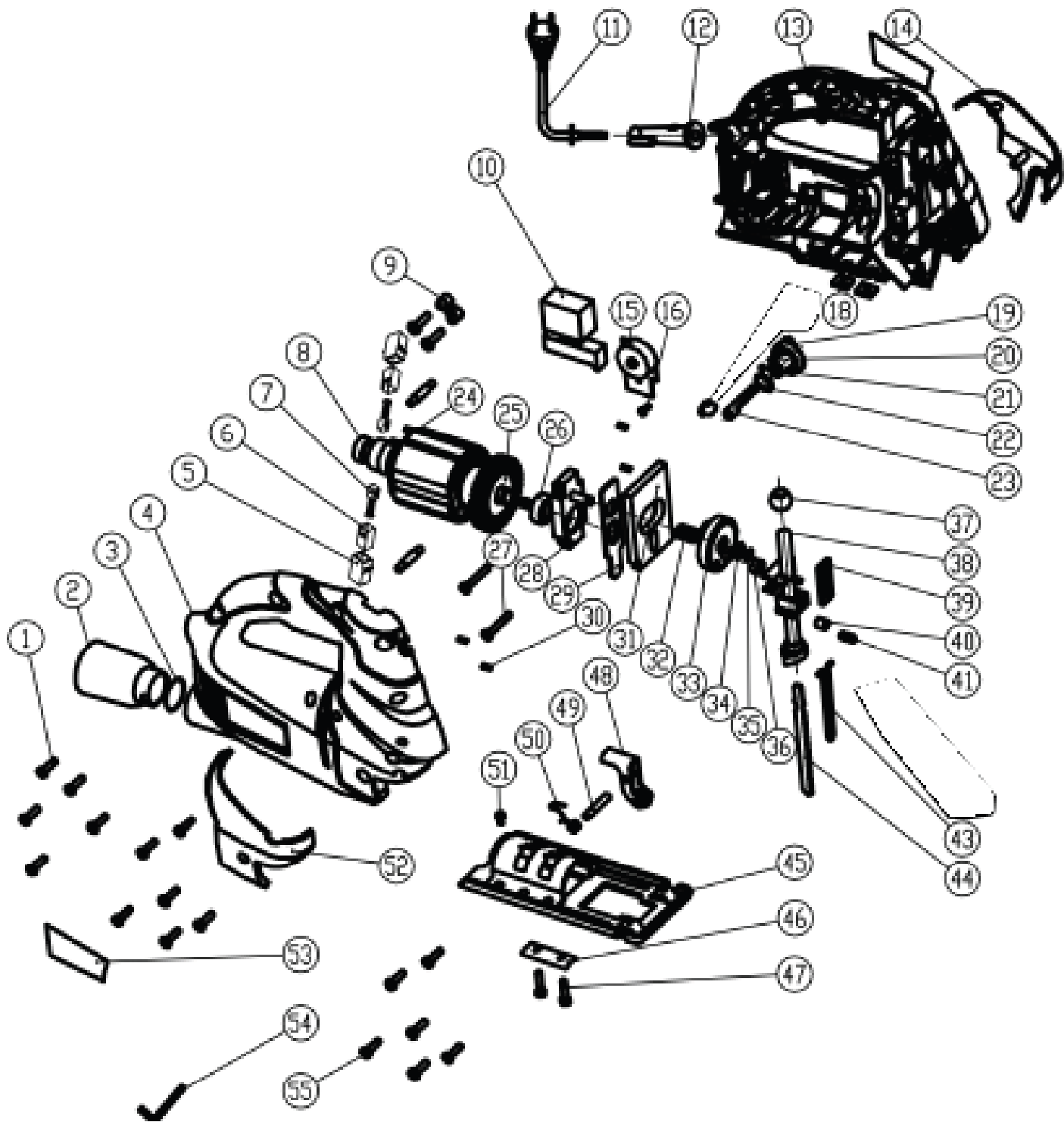


WARNING: To avoid accidents, always disconnect the tool from the power supply before cleaning or performing any maintenance. The tool may be cleaned most effectively with compressed dry air. Always wear safety goggles when cleaning tools with compressed air.



WARNING: Certain cleaning agents and solvents damage plastic parts. Some of these are: gasoline, carbon tetrachloride, chlorinated cleaning solvents, ammonia and household detergents that contain ammonia.

EXPLODED VIEW AND PARTS LIST



EXPLODED VIEW AND PARTS LIST

Item	Stock #	Description	Qty	Item	Stock #	Description	Qty
1	3602-001	Screw	13	28	3602-028	Bearing bracket	1
2	3602-002	Dust tube	1	29	3602-029	Cutter lifting connector	1
3	3602-003	O-ring	1	30	3602-030	Balance pin	4
4	3602-004	Right housing	1	31	3602-031	Balancing weight	1
5	3602-005	Brush holder	2	32	3602-032	Bearing	1
6	3602-006	Brush carrier	2	33	3602-033	Gear	1
7	3602-007	Brush	2	34	3602-034	Washer	1
8	3602-008	Bearing	1	35	3602-035	Clamp spring	1
9	3602-009	Label clip	1	36	3602-036	Bearing sleeve	1
10	3602-010	Switch	1	37	3602-037	Ball sliding block	1
11	3602-011	Cable	1	38	3602-038	Reciprocating lever	1
12	3602-012	Cable guard	1	39	3602-039	Locating board	1
13	3602-013	Left housing	1	40	3602-040	Cutter spring pocket	1
14	3602-014	Left housing coat	1	41	3602-041	Cutter lifting pocket	1
15	3602-015	Speed dial	1	43	3602-043	Wire foam	1
16	3602-016	Screw	1	44	3602-044	Blade	1
18	3602-018	Insert plate	2	45	3602-045	Base plate set	1
19	3602-019	Screw	5	46	3602-046	Base press plate	1
20	3602-020	Cutter lifting knob	1	47	3602-047	Hexagonal screw	2
21	3602-021	Pressure spring	1	48	3602-048	Guide wheel	1
22	3602-022	Steel ball	1	49	3602-049	Guide wheel pin	1
23	3602-023	Clamp spring	1	50	3602-050	Cutter lifting reset spring	1
24	3602-024	Stator	1	51	3602-051	Locating pin	1
25	3602-025	Armature	1	52	3602-052	Right housing coat	1
26	3602-026	Bearing	1	54	3602-054	Hex wrench	1
27	3602-027	Screw	2	55	3602-055	Screw	6

LIMITED TWO YEAR WARRANTY

WEN Products is committed to building tools that are dependable for years. Our warranties are consistent with this commitment and our dedication to quality.

LIMITED WARRANTY OF WEN CONSUMER POWER TOOLS PRODUCTS FOR HOME USE

GREAT LAKES TECHNOLOGIES, LLC (“Seller”) warrants to the original purchaser only, that all WEN consumer power tools will be free from defects in material or workmanship for a period of two (2) years from date of purchase. Ninety days for all WEN products, if the tool is used for professional use.

SELLER’S SOLE OBLIGATION AND YOUR EXCLUSIVE REMEDY under this Limited Warranty and, to the extent permitted by law, any warranty or condition implied by law, shall be the repair or replacement of parts, without charge, which are defective in material or workmanship and which have not been misused, carelessly handled, or misrepaired by persons other than Seller or Authorized Service Center. To make a claim under this Limited Warranty, you must make sure to keep a copy of your proof of purchase that clearly defines the Date of Purchase (month and year) and the Place of Purchase. Place of purchase must be a direct vendor of Great Lakes Technologies, LLC. Third party vendors such as garage sales, pawn shops, resale shops, or any other secondhand merchant void the warranty included with this product. Contact techsupport@wenproducts.com or 1-800-232-1195 to make arrangements for repairs and transportation.

When returning a product for warranty service, the shipping charges must be prepaid by the purchaser. The product must be shipped in its original container (or an equivalent), properly packed to withstand the hazards of shipment. The product must be fully insured with a copy of the warranty card and/or the proof of purchase enclosed. There must also be a description of the problem in order to help our repairs department diagnose and fix the issue. Repairs will be made and the product will be returned and shipped back to the purchaser at no charge.

THIS LIMITED WARRANTY DOES NOT APPLY TO ACCESSORY ITEMS THAT WEAR OUT FROM REGULAR USAGE OVER TIME INCLUDING BELTS, BRUSHES, BLADES, ETC.

ANY IMPLIED WARRANTIES SHALL BE LIMITED IN DURATION TO TWO (2) YEARS FROM DATE OF PURCHASE. SOME STATES IN THE U.S., SOME CANADIAN PROVINCES DO NOT ALLOW LIMITATIONS ON HOW LONG AN IMPLIED WARRANTY LASTS, SO THE ABOVE LIMITATION MAY NOT APPLY TO YOU.

IN NO EVENT SHALL SELLER BE LIABLE FOR ANY INCIDENTAL OR CONSEQUENTIAL DAMAGES (INCLUDING BUT NOT LIMITED TO LIABILITY FOR LOSS OF PROFITS) ARISING FROM THE SALE OR USE OF THIS PRODUCT. SOME STATES IN THE U.S. AND SOME CANADIAN PROVINCES DO NOT ALLOW THE EXCLUSION OR LIMITATION OF INCIDENTAL OR CONSEQUENTIAL DAMAGES, SO THE ABOVE LIMITATION OR EXCLUSION MAY NOT APPLY TO YOU.

THIS LIMITED WARRANTY GIVES YOU SPECIFIC LEGAL RIGHTS, AND YOU MAY ALSO HAVE OTHER RIGHTS WHICH VARY FROM STATE TO STATE IN THE U.S., PROVINCE TO PROVINCE IN CANADA AND FROM COUNTRY TO COUNTRY.

THIS LIMITED WARRANTY APPLIES ONLY TO PORTABLE ELECTRIC TOOLS, BENCH POWER TOOLS, OUTDOOR POWER EQUIPMENT AND PNEUMATIC TOOLS SOLD WITHIN THE UNITED STATES OF AMERICA, CANADA AND THE COMMONWEALTH OF PUERTO RICO. FOR WARRANTY COVERAGE WITHIN OTHER COUNTRIES, CONTACT THE WEN CUSTOMER SUPPORT LINE.

Thanks for remembering

