

**EXTRA
DUTY**

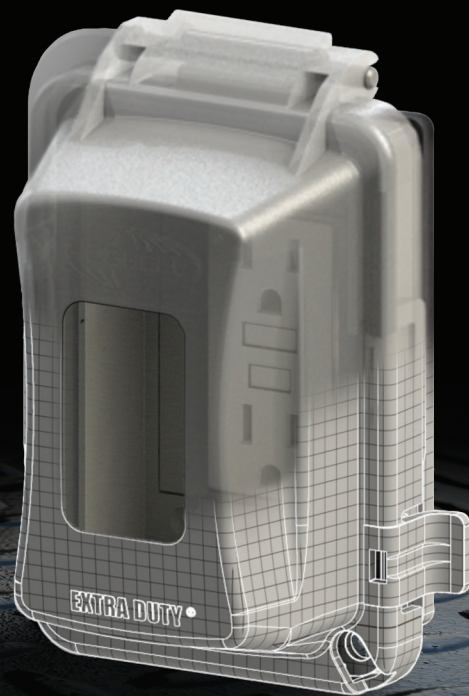


PLAY ROUGH?

Get Tough!

*with innovative EXTRA DUTY® covers from
HUBBELL TAYMAC® and BELL®*

**TAYMAC
TUFF**™



RACO

TAYMAC

BELL



RAGO

TAYMAC

BELL

COMMERCIAL, INDUSTRIAL AND RESIDENTIAL ELECTRICAL PRODUCTS

What has changed in the code for 2014

NATIONAL ELECTRICAL CODE 2014 EDITION

406.9 Receptacles in Damp or Wet Locations.

(A) Damp Locations. A receptacle installed outdoors in a location protected from the weather or in other damp locations shall have an enclosure for the receptacle that is weatherproof when the receptacle is covered (attachment plug cap not inserted and receptacle covers closed).

An installation suitable for wet locations shall also be considered suitable for damp locations.

A receptacle shall be considered to be in a location protected from the weather where located under roofed open porches, canopies, marquees, and the like, and will not be subjected to a beating rain or water runoff. All 15- and 20-ampere, 125- and 250-volt nonlocking receptacles shall be a listed weather-resistant type.

Informational Note: The types of receptacles covered by this requirement are identified as 5-15, 5-20, 6-15, and 6-20 in ANSI/NEMA WD 6-2002, National Electrical Manufacturers Association Standard for Dimensions of Attachment Plugs and Receptacles.

(B) Wet Locations.

(1) Receptacles of 15 and 20 Amperes in a Wet Location.

15- and 20-ampere, 125- and 250-volt receptacles installed in a wet location shall have an enclosure that is weatherproof whether or not the attachment plug cap is inserted. **An outlet box hood installed for this purpose shall be listed and shall be identified as "extra-duty."** All 15- and 20- ampere, 125- and 250-volt nonlocking-type receptacles shall be listed weather-resistant type.

Informational Note No. 1: Requirements for extra-duty outlet box hoods are found in ANSI/UL 514D-2000, Cover Plates for Flush-Mounted Wiring Devices.

Informational Note No. 2: The types of receptacles covered by this requirement are identified as 5-15, 5-20, 6-15, and 6-20 in ANSI/NEMA WD 6-2002, National Electrical Manufacturers Association Standard for Dimensions of Attachment Plugs and Receptacles.

Exception: 15- and 20-ampere, 125- through 250-volt receptacles installed in a wet location and subject to routine high-pressure spray washing shall be permitted to have an enclosure that is weatherproof when the attachment plug is removed.

What does this mean?

All Covers installed in a Wet Location that are using a 15 or 20 amp receptacle must use a While-In-Use cover and must meet "Extra Duty".



EXTRA DUTY // **EXTRA DUTY** // **EXTRA DUTY**

NEW!
EXTRA DUTY® in
Non-Metallic!

HUBBELL® TAYMAC® EXTRA DUTY® NON-METALLIC WHILE-IN-USE COVERS

- High-impact polycarbonate construction provides maximum durability
- Patented Quick-Fit™ keyhole mounting system allows installation in under a minute
- Base configuration with patented Knock-Out™ technology for custom fitting multiple configurations

- Includes attached gasket and mounting hardware
- Lockable tab

U.S. Patents: 7,348,486; 7,282,645; 7,119,277; 6,960,221; 6,790,816; 6,642,453



2014 NEC & NEMA
3R Compliant



CATALOG #	DESCRIPTION	DEPTH	COLOR	PKG. TYPE	STD. PKG.	UPC
1-Gang Extra Duty Plastic In-Use Covers						
MM420C	Extra Duty® Horizontal/Vertical 16-in-1 Standard	2.75"	Clear	Shrink	8	050169917275
MM420G	Extra Duty® Horizontal/Vertical 16-in-1 Standard	2.75"	Gray	Shrink	8	050169917282
MM720C	Extra Duty® Horizontal/Vertical 16-in-1 Jumbo	4.75"	Clear	Shrink	4	050169917299
MM720G	Extra Duty® Horizontal/Vertical 16-in-1 Jumbo	4.75"	Gray	Shrink	4	050169917404
2-Gang Extra Duty Plastic In-Use Covers						
MM2420C	Extra Duty® 55-in-1 Standard	2.75"	Clear	Shrink	6	050169917305
MM2420G	Extra Duty® 55-in-1 Standard	2.75"	Gray	Shrink	4	050169917312

HUBBELL® TAYMAC® EXTRA DUTY® EXPANDABLE WHILE-IN-USE COVERS

- Patented design expands from 1" to 3-1/2" to meet your While-In-Use needs
 - Ultra rugged polycarbonate & synthetic neoprene rubber will not dry rot, crack or deteriorate in sunlight
 - Includes attached gasket and mounting hardware
 - Patented Quick-Fit™ keyhole mounting system allows installation in under a minute
 - 100% paintable surface
- U.S. Patents: 8,101,861; 8,319,334; 8,053,671



16-in-1
CONFIGURATIONS

GFCI Duplex Switch 5 Rounds:
1-1/4" 1-3/8" 1-9/16" 1-3/4" 2-1/8"



55-in-1
CONFIGURATIONS

Multiple Combinations of GFCI, Duplex, Switch, and Rounds:
1-1/4" 1-3/8" 1-9/16" 1-11/16" 2-1/8" 2-1/4" 2-7/16" 8-1-5/8"

CATALOG #	DESCRIPTION	DEPTH	COLOR	PKG. TYPE	STD. PKG.	UPC
1-Gang Flat Expandable While-In-Use Covers						
ML500G	16-in-1 Flat Expandable Vertical/Horizontal	1" to 3.5"	Gray	Shrink	10	050169917411
ML500W	16-in-1 Flat Expandable Vertical/Horizontal	1" to 3.5"	White	Shrink	10	050169917428
ML500Z	16-in-1 Flat Expandable Vertical/Horizontal	1" to 3.5"	Bronze	Shrink	10	050169917435
2-Gang Flat Expandable While-In-Use Covers						
ML2500G	55-in-1 Flat Expandable 2-Gang	1" to 3.5"	Gray	Shrink	6	050169917367



HUBBELL® TAYMAC® LOW-PROFILE WHILE-IN-USE COVERS

Low Profile Metal Covers expand for use for weatherproof while in use and unobtrusive while not. The patented swivel lock device allows the cover to be locked expanded or closed.

- Heavy duty die-cast metal construction
- Patented Quick-Fit™ keyhole mounting system allows cover installation in under a minute
- Includes gasket and mounting hardware
- Base configuration with patented Knock-Out™ technology for custom fitting
- Premium powdercoat finish
- Lockable open or closed and fits fullsize padlock

U.S. Patents: 8,314,334; 8,259,253 B1; 6,420,654; 8,106,295 B1



EXPANDS
2" → 3½"

8-in-1
CONFIGURATIONS

Fits Full-Size Padlock
Locks Open or Closed

MX4280S

EXPANDS
2" → 3½"

8-in-1
CONFIGURATIONS

MX4380S

+ = or + =

EXPANDS
2½" → 4½"

8-in-1
CONFIGURATIONS

MX5280S

EXPANDS
2" → 3½"

55-in-1
CONFIGURATIONS

MX7280S

Multiple Combinations of GFCI, Duplex, Switch, and Rounds:
1-1/4" 1-3/8" 1-9/16" 1-11/16" 2-1/8" 2-1/4" 2-7/16" & 1-5/8"

8-in-1
CONFIGURATIONS

55-in-1
CONFIGURATIONS

CATALOG #	DESCRIPTION	DEPTH	COLOR	PKG. TYPE	STD. PKG.	UPC
Metal Low Profile In-Use Covers						
MX4280S	Vertical 8-in-1	2" to 3-1/2"	Gray	Shrink	6	092326101288
MX4280WH	Vertical 8-in-1	2" to 3-1/2"	White	Shrink	6	092326117401
MX4280Z	Vertical 8-in-1	2" to 3-1/2"	Bronze	Shrink	6	092326117395
MX4380S	Horizontal 8-in-1	2" to 3-1/2"	Gray	Shrink	4	092326101349
MX5280S	Vertical Deep 8-in-1	2-1/2" to 4-1/2"	Gray	Shrink	2	092326101356
MX7280S	Vertical 2-Gang 55-in-1	2" to 3-1/2"	Gray	Shrink	2	092326101370



HUBBELL® TAYMAC® EXTRA DUTY® METAL WHILE-IN-USE COVERS

- Heavy duty die-cast metal construction
- Patented Quick-Fit™ keyhole mounting system allows cover installation in under a minute
- Base configuration with patented Knock-Out™ technology for custom fitting
- Includes gasket and mounting hardware
- Premium powdercoat finish
- Lockable tab

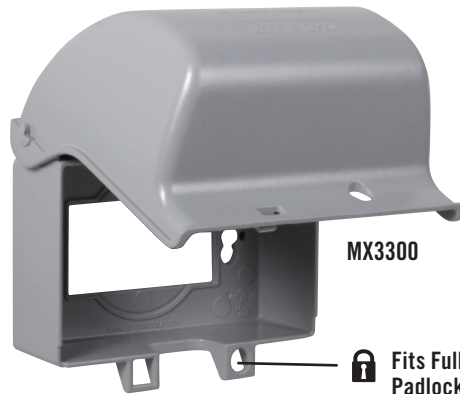
U.S. Patent: 8,314,334



2014 NEC & NEMA
3R Compliant



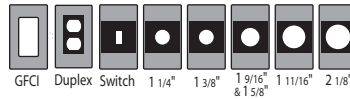
MX3200



MX3300

Fits Full-Size Padlock

8ⁱⁿ1
CONFIGURATIONS



MX6200

55ⁱⁿ1
CONFIGURATIONS



Multiple Combinations of GFCI, Duplex, Switch, and Rounds:
1-1/4" 1-3/8" 1-9/16" 1-11/16" 2-1/8" 2-1/4" 2-7/16"
& 1-5/8"

CATALOG #	DESCRIPTION	DEPTH	COLOR	PKG. TYPE	STD. PKG.	UPC
Metal In-Use Covers						
MX3200	Vertical 8-in-1	3.5"	Gray	Shrink	4	092326104760
MX3300	Horizontal 8-in-1	3.5"	Gray	Shrink	4	092326104746
MX6200	2-Gang 55-in-1	3.5"	Gray	Shrink	4	092326104838

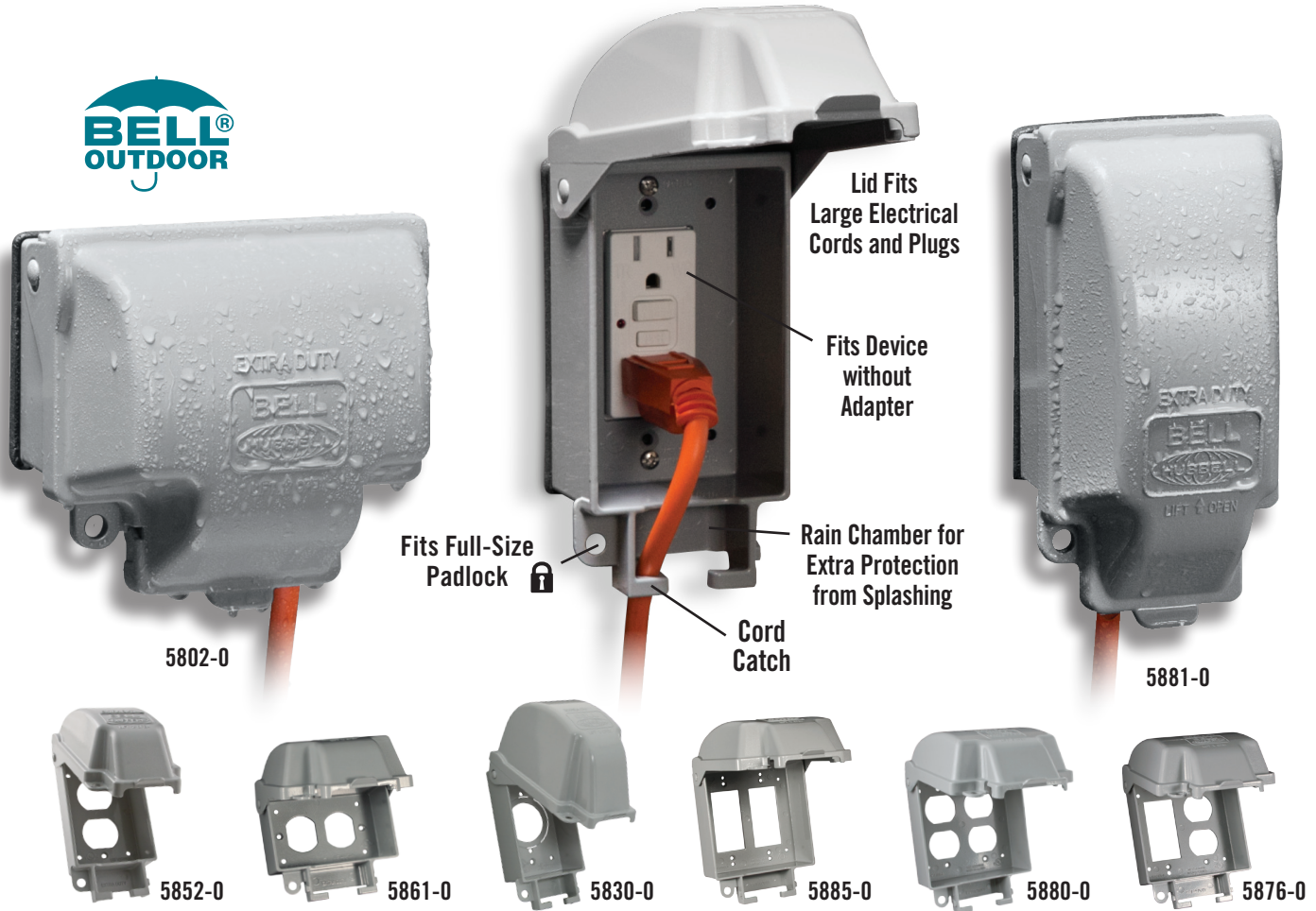
BELL® EXTRA DUTY® METAL WHILE-IN-USE COVERS

- Superior commercial quality die-cast aluminum
- Unique lid design allows larger plugs and provides more room for bend radius of electrical cords
- Cord catch prevents accidental pull outs

- Powder coated for corrosion protection
 - Includes gasket and hardware for device or box mounting
- U.S. Patents: 8,013,245



2014 NEC & NEMA
3R Compliant

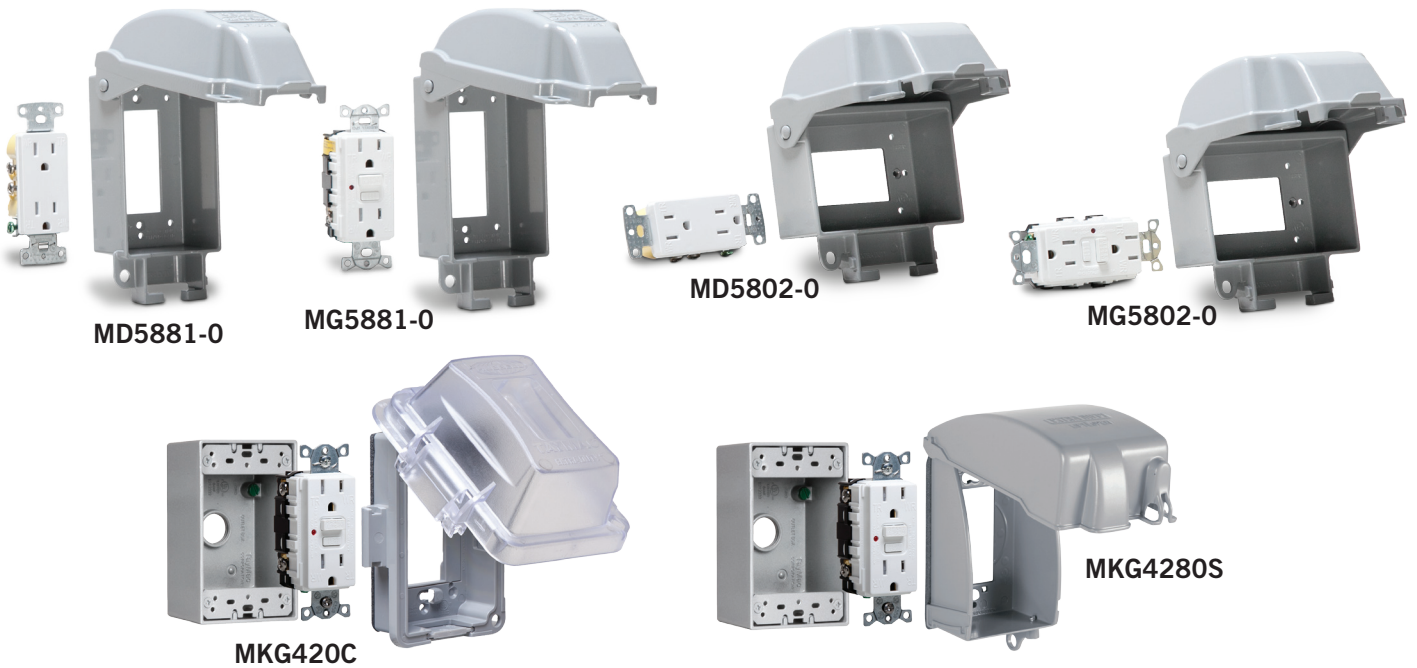


CATALOG #	DESCRIPTION	DEPTH	COLOR	PKG. TYPE	STD. PKG.	UPC
1-Gang Extra Duty While-In-Use Covers						
5881-0	Vertical GFCI	3"	Gray	Shrink	4	050169588109
5802-0	Horizontal GFCI	3"	Gray	Shrink	3	050169580202
5852-0	Vertical Duplex	3"	Gray	Shrink	4	050169585207
5861-0	Horizontal Duplex	3"	Gray	Shrink	3	050169586105
1-Gang Extra Duty Deep While-In-Use Covers						
5830-0	Vertical 1.55" or 2.10" Single Round	4.5"	Gray	Shrink	3	050169583005
2-Gang Extra Duty While-In-Use Covers						
5885-0	(2) GFCI	3"	Gray	Shrink	3	050169588505
5880-0	(2) Duplex	3"	Gray	Shrink	3	050169588000
5876-0	GFCI/Duplex	3"	Gray	Shrink	3	050169587607

EXTRA DUTY®
Available in Kits
Too!



RECEPTACLE / COVER COMBOS AND COMPLETE KITS



CATALOG #	DESCRIPTION	DEPTH	COLOR	PKG. TYPE	STD. PKG.	UPC
Non-Metallic In-Use Cover Kits						
MKG420C	Extra Duty® In-Use Cover, Box and Hubbell WRTR 15A GFCI Kit	2.75"	Clear/Gray	Box	4	050169917480
Metal In-Use Cover Combos						
MD5881-0	Hubbell WRTR 15A Duplex / Vertical In-Use Metal Cover Combo	3"	Gray	Shrink	4	050169986363
MG5881-0	Hubbell WRTR 15A GFCI / Vertical In-Use Metal Cover Combo	3"	Gray	Shrink	4	050169986431
MD5802-0	Hubbell WRTR 15A Duplex / Horizontal In-Use Metal Cover Combo	3"	Gray	Shrink	3	050169986356
MG5802-0	Hubbell WRTR 15A GFCI / Horizontal In-Use Metal Cover Combo	3"	Gray	Shrink	3	050169986424
Complete Metal In-Use Cover Kits						
MKG4280S	In-Use Cover, Box and Hubbell WRTR 15A GFCI Kit	3.5"	Gray	Clamshell	4	092326113120