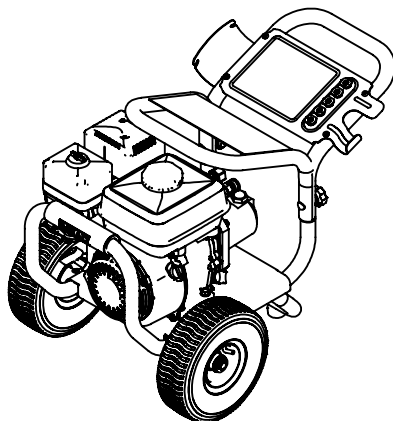


ITEM	PART NUMBER	DESCRIPTION	QTY.
1	7105011	FRAME, 11.75" BASE SVC ASSY FLAT BLACK	1
2	7105855	HANDLE, REAR DXPW SVC ASSY F/BLACK W/LABEL	1
2.1	7104806	HANDLE, REAR 11.75" F/BLACK	1
2.2	7104813	PLATE, DASHBOARD	1
2.3	7103161	HOLDER, NOZZLE 5PC RUBBER	1
† 2.4		SCREW, 1/4-20 X 0.75" TORX PAN HEAD	4
3	7105856	REAR HANDLE QUICK START WITH LABELS	1
4	7105857	ENGINE, SVC ASSY GX200UT2QX2 NH1 W/PLATE	1
4.1	7105453	SHAFT KEY, 1/4" X 1/4" X 1-1/2"	1
5	7103650	PUMP, ASSY CAT 3DNX25GSI	1
¶ 5.1	7102290	PUMP, CAT 3DNX25GSI	1
5.2	7100355	FITTING, INLET GHT(F) X 3/8" NPT(M)	1
5.3	7100019	COUPLER, OUTLET 3/8" QC(F) X 3/8" NPT(F)	1
5.4	7101359	VALVE, THERMAL RELIEF 1/4" NPT(M)	1
5.5	7103746	PLATE, PUMP ADAPTER CAT 3DNX25GSI	1
5.6	7102470	PLUG, 3/8" NPT(M)	1
† 5.7		WASHER, 3/8" SPLIT-LOCK	4
† 5.8		BOLT, 3/8-16 X 1.25" HHCS GR5	4
6	7105013	WHEEL, DXPW SERVICE KIT	2
† 6.1		WHEEL, 10 x 4 (4.10/3.50-4) BLACK HUB	1
† 6.2		WASHER, 5/8" SAE FLAT	1
† 6.3		CLIP, E-TYPE 5/8" X 0.042 ZINC/CLEAR	1
7	7103292	FOOT KIT, RUBBER FOOT & SCREW	2
† 7.1		RUBBER FOOT, 1.50IN X 0.625IN	1
† 7.2		SCREW, 1/4-20 X 0.75" TORX PAN HEAD	1
8	7103750	HARDWARE KIT, ENGINE MOUNT	1
† 8.1		BOLT, FLANGE 5/16-18 x 1.75"	4
† 8.2		NUT, SERRATED FLANGE 5/16-18	4
9	7103745	HARDWARE KIT, PUMP MOUNTING	1
† 9.1		BOLT, 5/16-24 X 0.75" HHCS GR5	4
† 9.2		WASHER, SPLIT LOCK 5/16" RUST RESISTANT	4
10	7104570	HARDWARE KIT, HANDLE MOUNTING	2
† 10.1		BOLT, SADDLE 5/16-18 X 2.00"	1
† 10.2		NUT, HAND TIGHT 5/16-18	1
11	7103743	NOZZLE SET, 5 PC. 3.0	1
12	7104166	HANDLE GRIP, VINYL COVER YELLOW	1
13	7103240	GUN AND WAND 5075PSI 3/8" PLUG X M22(F) OUT	1
14	7103550	LANCE, 16IN X 1/4IN QC	1
15	7105645	HOSE 5/16" X 25' X 3600PSI QC	1
16	7102207	SOAP HOSE AND FILTER KIT	1
* 17	7102045	TOOL, NOZZLE CLEANING, UNIVERSAL	1
* 18	7104924	MANUAL, OPERATORS DXPW60603	1
* 19	7104826	BOX, SHIPPING DXPW60603	1

† NOT SOLD SEPARATELY

* NOT SHOWN



PUMP IDENTIFICATION TABLE

MACHINE SERIAL NO.	PUMP MODEL	PUMP PART NO.	PUMP KIT
304491 THROUGH PRESENT	3DNX25GSI	7102290	7105022

	NAME	DATE
DRAWN	MAV	6/18/2012
CHECKED	M.G.	6/18/2012
ENG APPR.	JEW	6/18/2012
MFG APPR.	S.C.	6/18/2012
Q.A. APPR.	J.P.	6/18/2012
SERVICE APPR.	D.H.	6/19/2012

PROPRIETARY AND CONFIDENTIAL
 THE INFORMATION CONTAINED IN THIS DRAWING IS THE SOLE PROPERTY OF FNA-GROUP. ANY REPRODUCTION IN PART OR AS A WHOLE WITHOUT THE WRITTEN PERMISSION OF FNA-GROUP IS PROHIBITED.

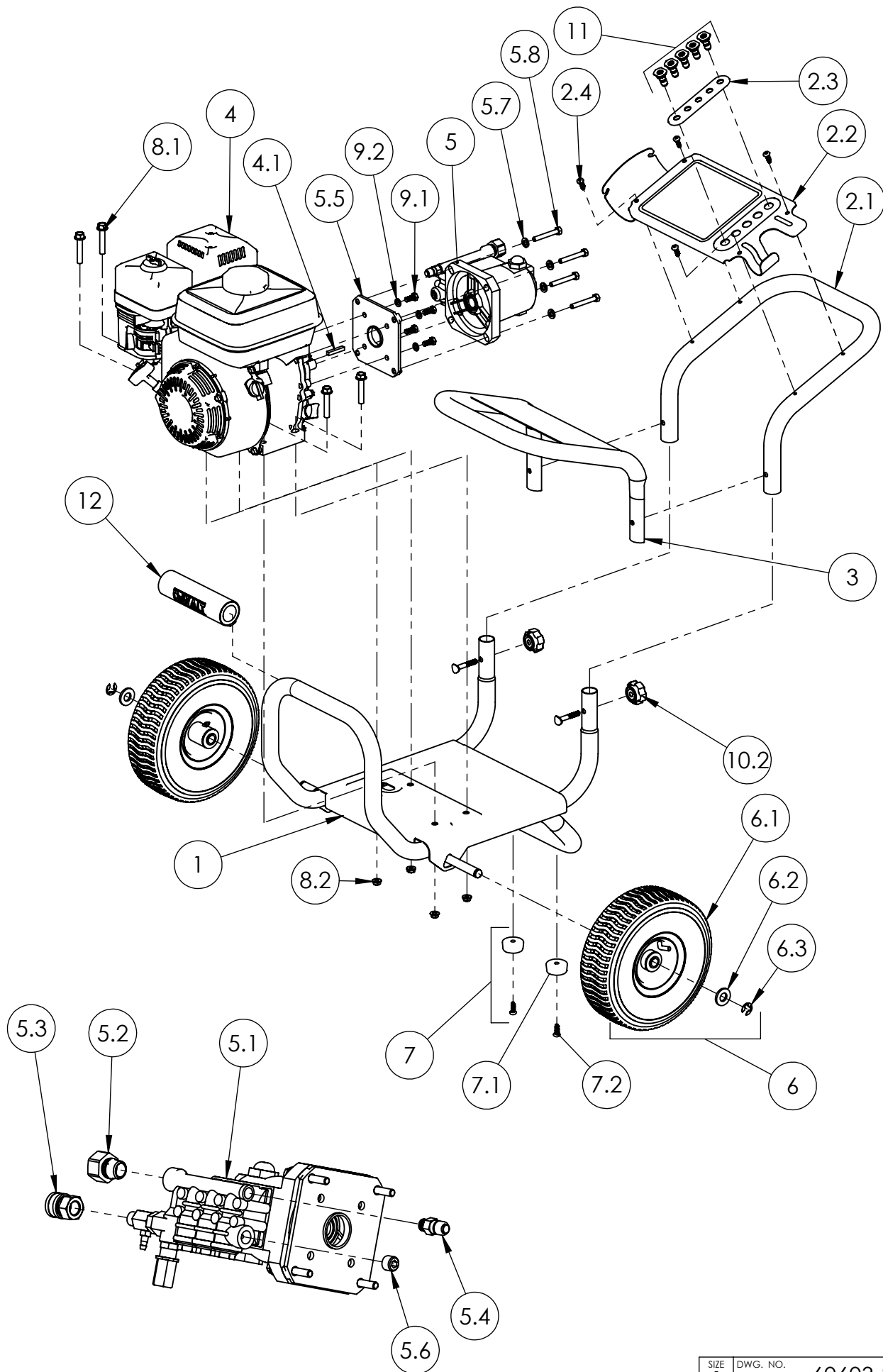
FNA-GROUP

1265 INDUSTRIAL STREET, DECATUR, AR 72722

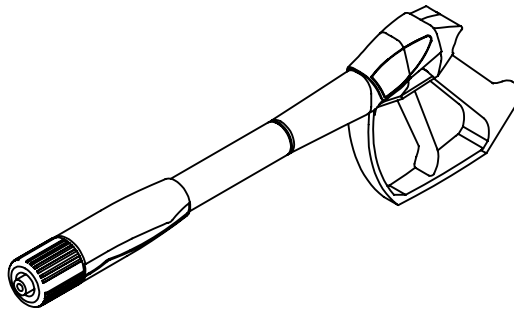
TITLE:

DXPW60603

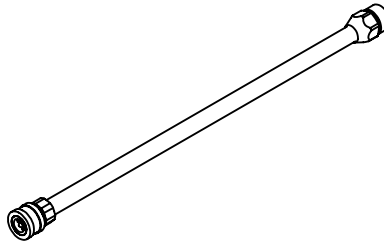
SIZE	DWG. NO.	REV.
A	60603-S	A
SCALE:	N/A	ECN# DC12-0070 SHEET 1 OF 4



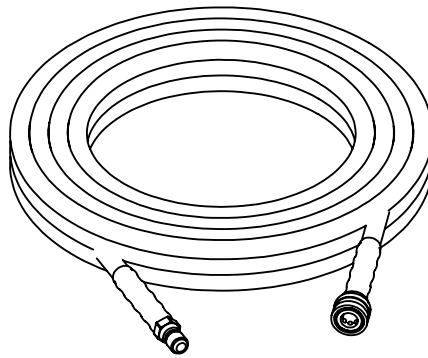
SIZE A	DWG. NO. 60603-S	REV. A
SCALE: 1:6	ECN# DC12-0070	SHEET 2 OF 4



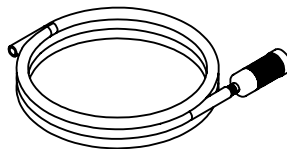
GUN AND WAND 5075PSI, 3/8 PLUG X M22(f) OUTLET
(PART NO. 7103240)



LANCE 16" WITH 16" QC AND M22-M
(PART NO. 7103550)



HOSE 5/16 X 25 X 3600 5/16QC
(PART NO. 7105645)

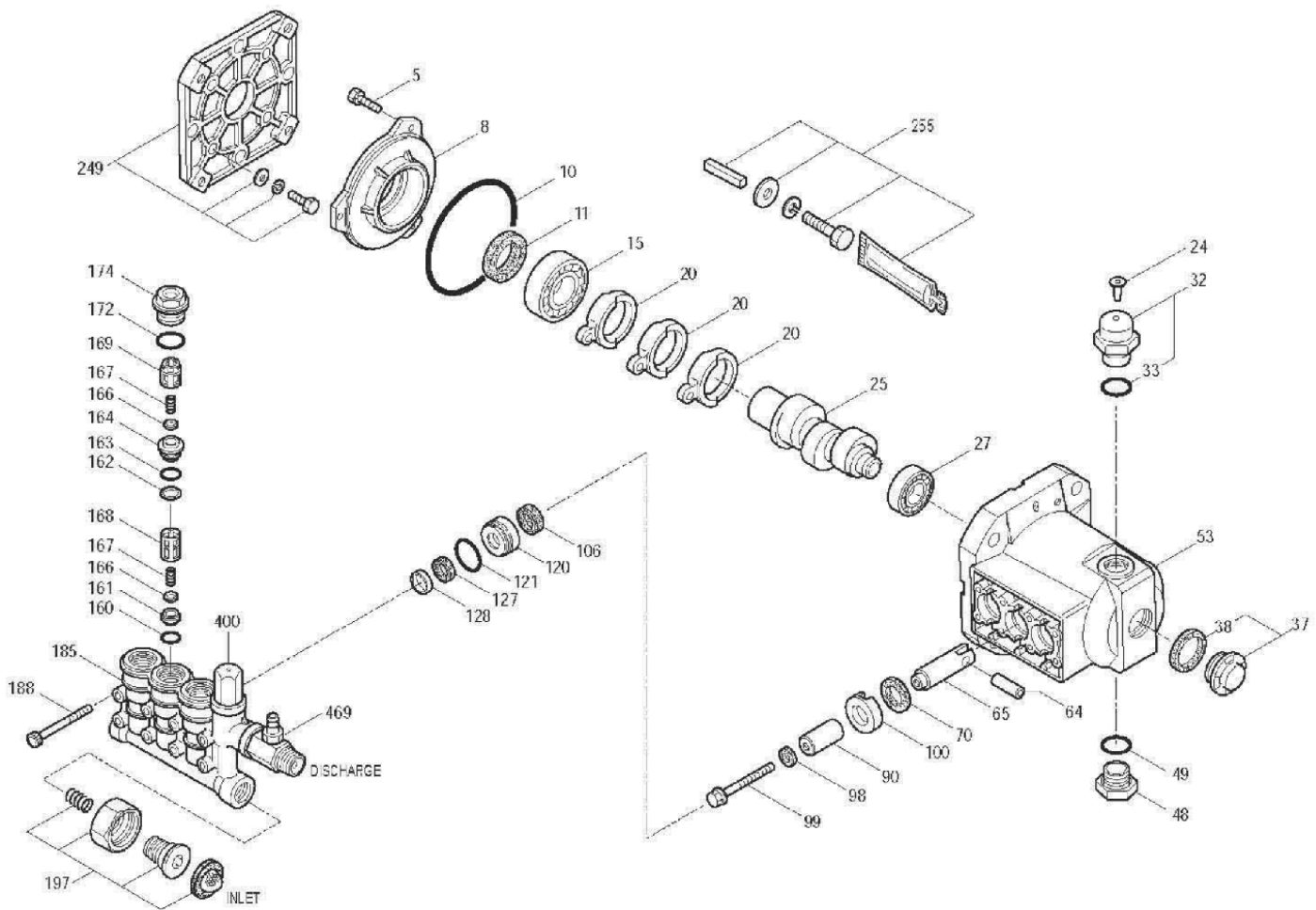


SOAP HOSE AND FILTER KIT
(PART NO. 7102207)

SIZE A	DWG. NO. 60603-S	REV. A
SCALE: 1:6	ECN# DC12-0070	SHEET 3 OF 4

EXPLODED VIEW

3DNX PLUNGER PUMP MODEL 3DNX25GSI, 3GXT27



PARTS LIST

ITEM	PN	MATL	DESCRIPTION	QTY	ITEM	PN	MATL	DESCRIPTION	QTY
5	NA	STCP	Screw, HHC Sems (M6x14)	3	128	NA	PVDF	Adapter, Male	3
	7103819	STCP R	Screw, HHC Sems (M6x14)	3	160	NA	NBR	O-Ring, Inlet Seat - 80D	3
8	7103820	AL	Cover, Bearing	1	181	NA	S	Seat, Inlet	3
10	7102614	NBR	O-Ring, Bearing Cover - 70D	1	162	NA	D	Back-up-Ring, Discharge Seat	3
11	7102813	NBR	Seal, Oil - 70D	1	163	NA	NBR	O-Ring, Discharge Seat - 70D	3
15	7102624	STL	Bearing, Ball	1	164	NA	S	Seat, Discharge	3
20	7103824	TNM	Rod, Connecting	3	166	NA	S	Valve	6
24	7103825	LDPE	Plug, Oil Cap	1	167	NA	S	Spring	6
25	7103826	CM	Crankshaft, 3DNX25GSI 6.8mm Stroke	1	168	NA	PVDF	Retainer, Spring, Inlet	3
	710354	CM	Crankshaft, 3GXT27 6.3mm Stroke	1	169	NA	PVDF	Retainer, Spring, Discharge	3
27	7103828	STL	Bearing, Ball	1	172	NA	NBR	O-Ring, Plug - 90D	3
32	7102604	RTP	Cap, Oil Filler w/O-Ring	1	174	7103836	BB	Plug, Valve (M22x1.5)	3
33	7102617	NBR	O-Ring, Oil Filler Cap - 70D	1	185	7103837	BB	Head, Manifold w/Integral Unloader Body	1
37	7103056	—	Gauge, Bubble Oil w/Gasket	1	188	7103838	STZP	Screw, HSH (M6x60)	8
38	7102970	NBR	Gasket, Flat Flex, Oil Gauge - 80D	1	197	7103839	BB	Assy, GH, 3/8" NPTM	1
48	7101762	NY	Plug, Drain	1	—	—	—	Nut, Swivel (3/4" FGH)	1
49	7102617	NBR	O-Ring, Drain Plug - 70D	1	—	—	—	Fitting, (3/8" NPTM)	1
53	7103829	AL	Crankcase	1	—	—	—	Screen, Inlet	1
64	7103830	CM	Pin, Crosshead	3	—	—	—	Spring	1
65	7103831	BB	Rod, Plunger	3	249	7103840	—	Assy, Adapter Mount	1
70	7102804	NBR	Seal, Oil - 70D	3	255	7103841	STZP R	Assy, Bolt Mount	1
90	7103542	CC	Plunger (M14x25.5)	3	283	NA	—	Kit, Oil Drain (Not Shown)	1
98	NA	NBR	Washer, Seal - 90D	3	300	7103546	NBR	Kit, Seal (Incls: 98, 106, 121, 127, 128)	1
99	7103833	S	Retainer, Plunger (M6x35)	3	310	7103540	NBR	Kit, Valve	1
100	7102925	NY	Retainer, Seal	3				(Incls: 160, 161, 162, 163, 164, 166, 167, 168, 169, 172)	
106	NA	NBR	Seal, LPS w/S-Spg	3	400	NA	—	Unloader, Integral (See Individual Parts)	1
120	7103835	BB	Case, Seal	3	469	7101616	BB	Injector, Chemical Fixed	1
121	NA	NBR	O-Ring, Seal Case - 70D	3					
127	NA	SNG	V-Packing	3					

Italics are optional items. [] Date of latest production change. R Components comply with RoHS Directive.

See Tech Bulletins 002, 024, 036, 043, 055, 074 and 083 for additional information.

MATERIAL CODES (Not Part of Part Number): AL=Aluminum BB=Brass CC=Ceramic CM=Chrome-moly D=Acetal
LDPE=Low Density Polyethylene NBR=Medium Nitrile (Buna-N) NY=Nylon PVDF=Polyvinylidene Fluoride RTP=Reinforced Composite

S=304SS SNG=Special Blend (Buna) STL=Steel STCP=Steel/Chrome Plated STZP=Steel/Zinc Plated TNM=Special High Strength

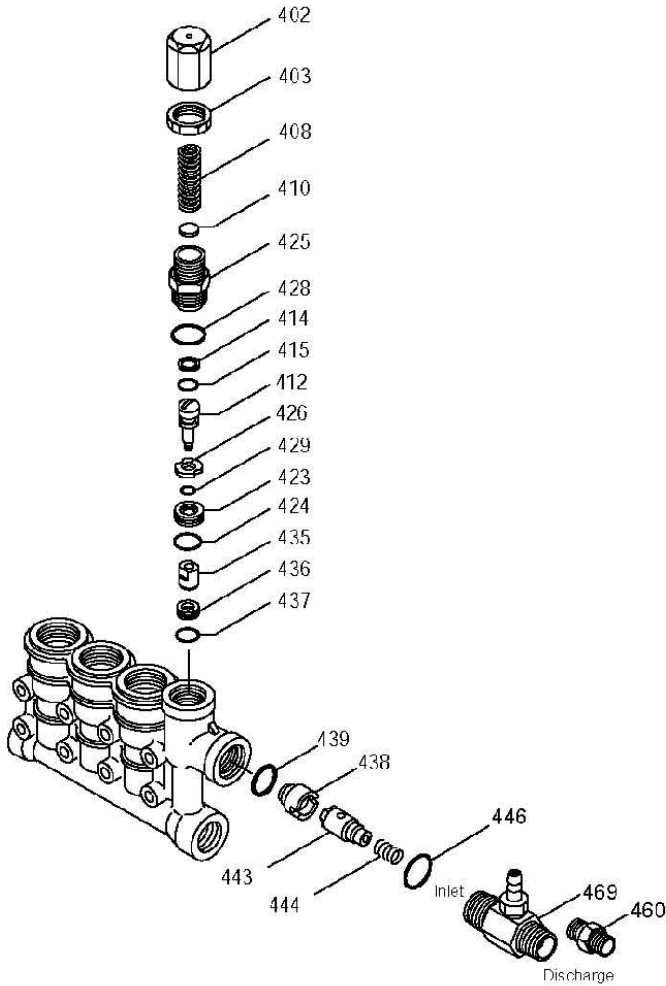
NOTE: Discard Key which may come standard with most engines and use only the key included in this kit.

Center raised pilot guide on the **Adapter Plate** assures proper alignment of pump and engine. Before mounting pump onto engine inspect engine for **recessed seal and bearing guide** to permit adapter to completely seat into recess and four bosses to be flush with engine face.

INTEGRAL UNLOADER

SPECIFICATIONS

	U.S. Measure	Metric Measure
Flow	3.0 GPM	(11.4 L/M)
PSI Range	100-2850 PSI	(7-196 BAR)
Inlet Port	3/4" GHF	(3/4" GHF)
Discharge Port	M18x1.0	(M18x1.0)



PARTS LIST

ITEM	PN	MATL	DESCRIPTION	QTY.
402	7103842	BB	Cap, Adjusting	1
403	7103843	BB	Nut, Lock (M18x1)	1
408	7103544	STZP R	Spring, Pressure	1
410	7103845	STCP R	Retainer, Spring	1
412	NA	S	Stem, Piston	1
414	NA	PTFE	Back-up-Ring, Piston Stem	1
415	NA	NBR	O-Ring, Piston Stem - 70D	1
423	NA	BB	Retainer, Valve	1
424	NA	NBR	O-Ring, Valve Retainer (Outer) - 70D	1
425	NA	BB	Retainer, Piston	1
426	NA	S	Washer	1
428	NA	NBR	O-Ring, Piston Retainer - 80D	1
429	NA	NBR	O-Ring, Valve Retainer (Inner) - 80D	1
435	NA	S	Valve	1
436	7103846	S	Seat	1
437	NA	NBR	O-Ring, Seat - 70D	1
438	7101617	NY	Seat, Check Valve	1
439	7102598	NBR	O-Ring, Check Valve Seat - 70D	1
443	7102811	BB	Valve, Check w/O-Ring	1
444	7103048	S	Spring	1
446	7103851	NBR	O-Ring, Body - 80D	1
460	7102590	BB	Fitting, Discharge (3/8" NPTM)	1
468	7103541	NBR	Kit, O-Ring (Incls: 414,415,424,428,429,437)	1
	7103543	NBR	Kit, Repair (Incls: 412,414,415,423,424,425,426,428,429,435)	1
469	7101616	BB	Injector, Chemical Fixed	1

Italics are optional items. R Components comply with RoHS Directive.

MATERIAL CODES (Not Part of Part Number): BB=Brass

NBR=Medium Nitrile (Buna-N) NY=Nylon PTFE=Pure Polytetrafluoroethylene

S=304SS STCP=Steel/Chrome Plated STZP=Steel/Zinc Plated

UNLOADER TYPE

An integral unloader with built-in by-pass is part of the discharge manifold to provide system pressure regulation and pump protection. This pump also includes a fixed chemical injector for chemical application.

OPERATION:

Pump should be purged of air before commencing with operation. Liquid must flow through the pump without discharge restriction to assure full system pressure is reached.

Install a pressure gauge close to the manifold head of the pump to assist in setting system pressure and to periodically monitor system pressure.

Setting and adjusting the unloader pressure must be done with the system turned on. Start the system with the unloader backed off to the lowest pressure setting (counterclockwise direction). Squeeze the trigger and read the pressure on the gauge at the pump. Do not read pressure at the gun or nozzle. If more pressure is desired, release the trigger, turn adjusting cap one quarter turn in a clockwise direction. Squeeze the trigger and read the pressure. Repeat this process until the desired system pressure is reached. Thread locking nut up to adjusting cap.

NOTE: Pressure is not set at the factory.

SERVICE:

The unloader should be serviced on the same schedule as the seals in the pump. Refer to 3DNX Service Manual for start-up, servicing of seals and valves, torque requirements and Diagnosis/Maintenance chart.

7332 FIXED CHEMICAL INJECTOR

SPECIFICATIONS

	U.S. Measure	Metric Measure
Flow	3.0 GPM	(11.4 L/M)
Nozzle Orifice	2.1 mm	(2.1 mm)
Hose Barb	1/4"	(1/4")
Inlet Port	M18x1.0	(M18x1.0)
Discharge Port	3/8" NPTM	(3/8" NPTM)
Weight	5.3 oz.	(0.15 kg)
Dimensions	2 x 1 x 1.75"	(52 x 25 x 45 mm)

CHEMICAL INJECTOR PERFORMANCE CHART

Orifice Size	Maximum Injecting Pressure	Maximum Chemical Draw	Pressure Drop Across Injector At System Pressure (2850 PSI)
2.1 mm	250 PSI	37.2 oz/min	141 PSI

Optimum performance of chemical injector occurs with a 35 ft. high pressure hose and a minimum 3/8" I.D. The type of hose, extended lengths, reduced I.D. and fittings may create back pressures in excess of the low pressure nozzle rating and prevent the injector from drawing chemical. See Hose Friction Loss Chart in Service Manual. **Deduct hose friction loss from above low PSI Nozzle. Contact CAT PUMPS for assistance with other options.**

CAUTION: Deduct the pressure drop shown in the performance chart from your desired system pressure to arrive at the maximum high pressure nozzle rating. This is essential to avoid over-pressurizing the pump.