



OPERATOR'S MANUAL

18 Gauge Narrow Crown Stapler

Model # 61710



▲ IMPORTANT:

Your new tool has been engineered and manufactured to WEN's® high standards for dependability, ease of operation, and operator safety. Properly cared for, it will give you years of rugged, trouble-free performance.

Pay close attention to the Rules for Safe Operation, Warnings, and Cautions. If you use your tool properly and only for what it is intended, you will enjoy years of safe, reliable service.



It's not how, it's WEN the project get's done!

Have product questions or need technical support? Please feel free to contact us!



WenProducts.com



800- 232-1195 M-F 8-4:30 CST



techsupport@wenproducts.com

Table of Contents

Technical Data.....	2
General Safety Rules.....	3
Specific Safety Rules for Stapler.....	6
Know Your Stapler.....	8
Operation.....	9
Troubleshooting.....	12
Exploded View.....	13
Parts List.....	14
Warranty.....	15

Technical Data

Operating pressure range	60 psi-100 psi
Air inlet	1/4" NPT
Air consumption	1.6 CFM
Nail size range	3/8"--1-1/4"
Nail diameter	18 Gauge
Nail Crown Width:	1/4"
Magazine capacity	100
Weight	2.8 lbs

Package Contents

1- Stapler, 1-S3 Hex Wrench, 1-S4 Hex Wrench, 1- Non-detergent oil, 1- Operator's Manual

General Safety Rules

The purpose of safety symbols is to attract your attention to possible dangers. The safety symbols, and the explanations with them, deserve your careful attention and understanding. The safety warnings do not by themselves eliminate any danger. The instructions or warnings they give are not substitutes for proper accident prevention measures.

Symbol Meaning



Safety Alert Symbol:

Indicated danger, warning, or caution, may be used in conjunction with other symbols or pictographs. Always follow the safety precautions to reduce the risk of fire, electric shock and personal injury.

NOTE: advising you of information or instructions is vital to the operation or maintenance of the equipment.

Important

Servicing requires extreme care and knowledge and should be performed only by a qualified service technician. For service, we suggest you return the tool to WEN PRODUCTS a division of Great Lakes Technologies, LLC. for repair. When servicing, use only identical WEN® replacement parts.



WARNING - Do not attempt to operate this tool until you have read thoroughly and understand completely all instructions, safety rules, etc...contained in this manual.

Failure to comply can result in accidents involving fire, electric shock, or serious personal injury. Save this operator's manual and review frequently for continuing safe operation and instructing others who may use this tool.

Safe operation of this power tool requires that you read and understand this operator's manual and all labels affixed to the tool. Safety is a combination of common sense, staying alert, and knowing how your tool works.

“READ ALL INSTRUCTIONS” Failure to follow the safety rules listed below and other basic safety precautions may result in serious personal injury.

- **Actuating tool may result in flying debris, collation material, or dust which could harm operator's eyes.** Operator and others in work area **MUST** wear safety glasses with side shields. These safety glasses must conform to ANSI Z87.1 requirements (approved glasses have “Z87” printed or stamped on them). It is the employer's responsibility to enforce the use of eye protection equipment by the tool operator and other people in the work area.
- **Always wear appropriate personal hearing and other protection during use.** Under some conditions and duration of use, noise from this product may contribute to hearing loss.
- **Use only clean, dry, regulated air.** Condensation from an air compressor can rust and damage the internal workings of the tool.
- **Regulate air pressure. Use air pressure compatible with ratings on the nameplate of the tool.** [Not to exceed 120 psi (8.3 bar)] Do not connect the tool to a compressor rated at over 175 psi. The tool operating pressure must never exceed 175 psi even in the event of regulator failure.

- **Only use air hose that is rated for a maximum working pressure of at least 150 psi (10.3 BAR) or 150% of the maximum system pressure, which ever is greater.**
- **Do not use bottled gases to power this tool.** Bottled compressed gases such as oxygen, carbon dioxide, nitrogen, hydrogen, propane, acetylene or air are not for use with pneumatic tools. Never use combustible gases or any other reactive gas as a power source for this tool. Danger of explosion and/ or serious personal injury may result.
- **Use couplings that relieve all pressure from the tool when it is disconnected from the power supply.** Use hose connectors that shut off air supply from compressor when the tool is disconnected.
- **Disconnect tool from air supply when not in use. Always disconnect tool from air supply and remove fasteners from magazine before leaving the area or passing the tool to another operator. Do not carry tool to another work area in which changing location involves the use of scaffoldings, stairs, ladders, and the like, with air supply connected. Do not make adjustments, remove magazine, and perform maintenance or clear jammed fasteners while connected to the air supply.** If the contact trip is adjusted when the tool is connected to the air supply and nails are loaded, accidental discharge may occur.
- **Connect tool to air supply before loading fasteners to prevent a fastener from being fired during connection.** The tool driving mechanism may cycle when tool is connected to the air supply. Do not load fasteners with trigger or safety depressed to prevent unintentional firing of a fastener.
- **Do not remove, tamper with, or otherwise cause the tool, trigger, or contact trip to become inoperable.** Do not tape or tie trigger or contact trip in the on position. Do not remove spring from contact trip. Make daily inspections for free movement of trigger and contact trip. Uncontrolled discharge could result.
- **Inspect tool before use. Do not operate a tool if any portion of the tool, trigger, or contact trip is inoperable, disconnected, altered, or not working properly.** Leaking air, damaged parts or missing parts should be repaired or replaced before use. Refer to **Repairs**.
- **Do not alter or modify the tool in any way.**
- **Always assume that the tool contains fasteners.**
- **Do not point the tool at co-workers or yourself at any time.** No horseplay! Work safe! Respect the tool as a working implement.
- **Keep bystanders, children, and visitors away while operating a power tool.** Distractions can cause you to lose control. When tool is not in use, it should be locked in a safe place, out of the reach of children.
- **Remove finger from trigger when not driving fasteners.** Never carry tool with finger on trigger. Using the trigger lock-off will prevent accidental discharge. Accidental discharge could result.
- **Do not overreach. Maintain proper footing and balance at all times.** Loss of balance may cause personal injury.
- **Make sure hose is free of obstructions or snags.** Entangled or snarled hoses can cause loss of balance or footing.
- **Use the tool only for its intended use. Do not discharge fasteners into open air, concrete, stone, extremely hard woods, knots or any material too hard for the fastener to penetrate.** Do not use the body of the tool or top cap as a hammer. Discharged fasteners may follow unexpected path and cause injury.
- **Always keep fingers clear of contact trip to prevent injury from inadvertent release of nails.**

- **Refer to the *Maintenance and Repairs* for detailed information on the proper maintenance of the tool.**
- **Always operate the tool in a clean, lighted area.** Be sure the work surface is clear of any debris and be careful not to lose footing when working in elevated environments such as rooftops.
- **Do not drive fasteners near edge of material.** The workpiece may split causing the fastener to ricochet, injuring you or a co-worker. Be aware that the nail may follow the grain of the wood (shiner), causing it to protrude unexpectedly from the side of the work material. Drive the nail perpendicular to the grain to reduce risk of injury.
- **Do not drive nails onto the heads of other fasteners or with the tool at too steep an angle.** Personal injury from strong recoil, jammed fasteners, or ricocheted nails may result.
- **Be aware of material thickness when using the nailer. A protruding nail may cause injury.**
- **Be aware that when the tool is being utilized at pressures on the high end of its operating range, nails can be driven completely through thin or very soft work material.** Make sure the pressure in the compressor is set so that nails are set into the material and not pushed completely through.
- **Keep hands and body parts clear of immediate work area.** Hold workpiece with clamps when necessary to keep hands and body out of potential harm. Be sure the workpiece is properly secured before pressing the nailer against the material. The contact trip may cause the work material to shift unexpectedly.
- **Do not use tool in the presence of flammable dust, gases or fumes.** The tool may produce a spark that could ignite gases causing a fire. Driving a nail into another nail may also cause a spark.
- **Keep face and body parts away from back of the tool cap when working in restricted areas.** Sudden recoil can result in impact to the body, especially when nailing into hard or dense material.
- **Grip tool firmly to maintain control while allowing tool to recoil away from work surface as fastener is driven.** In bump action mode (contact actuation mode) if contact trip is allowed to recontact work surface before trigger is released an unwanted fastener will be fired.

Specific Safety Rules for Stapler

- 1. KEEP WORKING AREA CLEAN.** Cluttered areas invite injuries.
- 2. DON'T ALLOW CHILDREN KEEP AT THE WORKING AREA.** Don't let them handle the tool.
- 3. DO NOT OPERATE THIS TOOL IF UNDER THE INFLUENCE OF ALCOHOL OR DRUGS.** Read warning label on prescriptions to determine if your judgment or reflexes are impaired while taking drugs. If there is any doubt, do not attempt to operate.
- 4. USE SAFETY GLASSES.** Safety glasses should conform to ANSI Z87.1 specifications. Before operating, wear safety glasses against flying debris from the front and side. Safety glasses should be worn when loading, operating, unloading or servicing this tool.
- 5. USE EAR PROTECTION.** The working area may be exposed to high noise levels that can lead to hearing damaged.
- 6. NEVER USE OXYGEN COMBUSTIBLE GASES, BOTTLED GASES OR HIGH PRESSURE COMPRESSED GAS AS A POWER SOURCE FOR THIS TOOL.** The tool may explode and cause serious injury.
- 7. DRESS SAFELY.** Protective gloves and nonskid footwear or safety shoes are recommended when working with and operating this tool. Don't wear loose clothing or jewelry. They can get caught in moving parts. Also, wear a protective hair covering to prevent long hair from getting caught in the tool.
- 8. DO NOT FIRE TO HARD MATERIALS.** Do not attempt to shoot toward hard or brittle material such as concrete, steel or tile.
- 9. WHEN OPERATING TOOL.** Keep the proper footing and balance to avoid damaged resulting from losing balance.
- 10. CHECK DAMAGED PARTS.** Before using tool, carefully check if there is any part damaged.
- 11. REPLACE PARTS AND ACCESSORIES.** Only allow use same replacement parts while servicing. Approved accessories and replacement parts are available.
- 12. KEEP ALERT.** Watch what you are doing. Use common sense. Do not operate any tool when you are tired.
- 13. STORE THE TOOL.** When not in use, tool should be cleaned, fully assembled and then, stored in a dry location to reduce rust. For safety, keep out of reach of children.
- 14. OUTDOORS EXTENSION CORDS.** When air compressor is used outdoors, use only rounded jackets extensions cords intended for outside use. See manufacturer's manual for the AWG required for the compressor's amperage draw.
- 15. PAY ATTENTION TO AIR HOSE AND THEIR CONNEATIONS.** Don't trip over hoses. Make sure all connections are tight.
- 16. AFTER LOADING THE FASTENERS.** Never point the tool at yourself or bystanders.

17. USE THE CORRECT AIR CONNECTOR. The connector on the tool must not hold pressure when the air supply is disconnected. If the wrong fitting is used, the tool can be charged with air after being disconnected and still be able to drive a fastener.

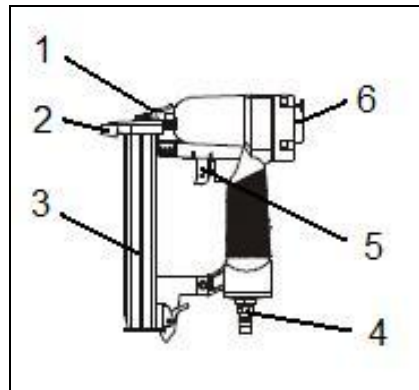
18. WHEN CONNECTING THE AIR. The tool can possibly fire the fasteners. Therefore, remove all the fasteners before connecting to the air.

19. DO NOT DEPRESS THE SAFE BRACKET AND THE TRIGGER WHEN LOADING.

20. IF THE FASTENERS ARE JAMMED. Disconnect the tool from the air and remove the jammed fasteners out.

WARNING: The warning, caution, and instructions explained in this instruction manual cannot cover all possible conditions and situations that may occur. It must be understood by the operator that **COMMON SENSE AND CAUTION ARE FACTORS WHICH CANNOT BE BUILT INTO THIS PRODUCT, BUT MUST BE SUPPLIED BY THE OPERATOR.**

Know Your Stapler



1-Jam Clearing Latch

2-Contact Trip

3-Magazine

4-Air Inlet

5-Trigger

6-Exhaust

Operation



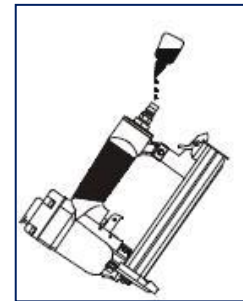
WARNING - if any parts are missing, do not operate this tool until the missing parts are replaced. Failure to do so could result in possible serious personal injury.

Lubrication

This tool requires lubrication before using the tool for the first time and before each use. If an inline oiler is used, manual lubrication through the air inlet is not required.

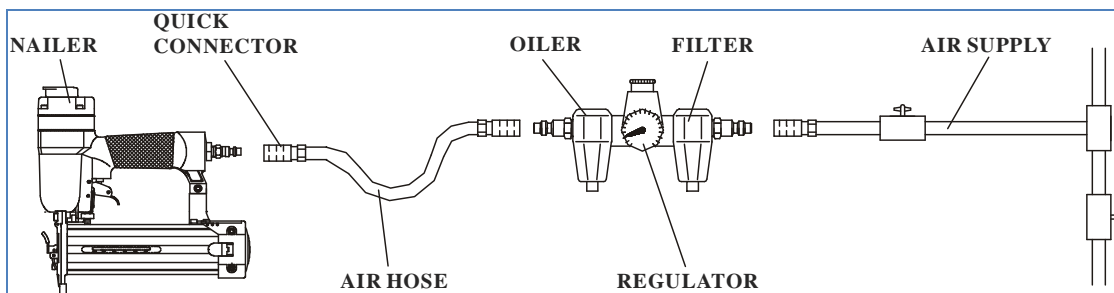
Note: The work surface can become damaged by excessive lubrication. Proper lubrication is the owner's responsibility. Failure to lubricate the tool properly will dramatically shorten the life of the tool and void your warranty.

1. Disconnect the air supply from the tool to add lubricant.
2. Turn the tool so the air inlet is facing up. Place 4-5 drops of 30W non-detergent oil (included) into air inlet.
3. After adding oil, run tool briefly. Wipe off any excess oil from the exhaust.



Recommended Hookup

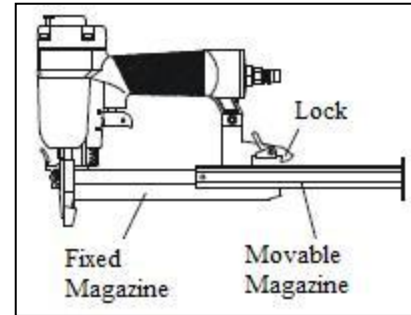
Your air tool is fully assembled when you receive it. Before using it, attach the air line and desired air system accessories. See below for the recommended accessories and connection order. Be sure the air hose is depressurized when installing or removing adapters to the air line.



Loading the fasteners

Caution: Always disconnect the tool from the air supply before loading the fasteners.

1. Depress the lock to release the movable magazine and pull the magazine out fully.
2. Place a full clip of the specified type and size fasteners on the fixed magazine, up to 100 fasteners may be loaded in the magazine.
3. Push the movable magazine forward until it was locked.



Actuating tool

Warning: To reduce the risk of injury, Always wear proper eye and hearing protection when operating this tool.

Warning: A nail will fire each time the trigger is depressed as long as the contact trip remains depressed which could result in inadvertent actuation.

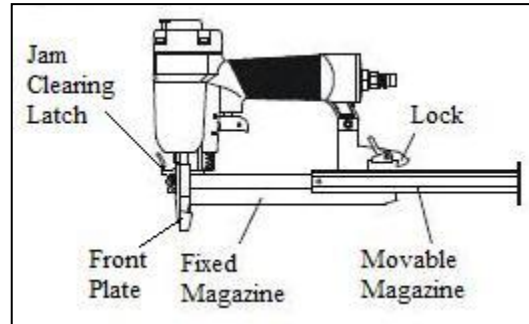
1. Depress the contact trip firmly against the work surface.
2. Depress the trigger.

Clearing a jammed nail

Warning: Disconnect air line from tool and remove fasteners from magazine before making adjustments or personal injury may result.

If a nail becomes jammed in the nosepiece, keep the tool pointed away from you and follow these instructions to clear:

1. Disconnect air supply from tool.
2. Press magazine lock to release movable magazine.
3. Push down jam clearing latch then pull up to open front plate.
4. Remove jammed nail, using pliers if necessary.
5. If the piston assembly is in the down position, insert screwdriver or other rod into nosepiece and push the piston back in position.
6. Remove rod and close front plate.
7. Lift latch to secure front plate to nosepiece.
8. Make sure the trigger and contact trip move freely without sticking or binding.
9. Loading nails into magazine (see loading the fasteners section before).
10. Reattach air supply.



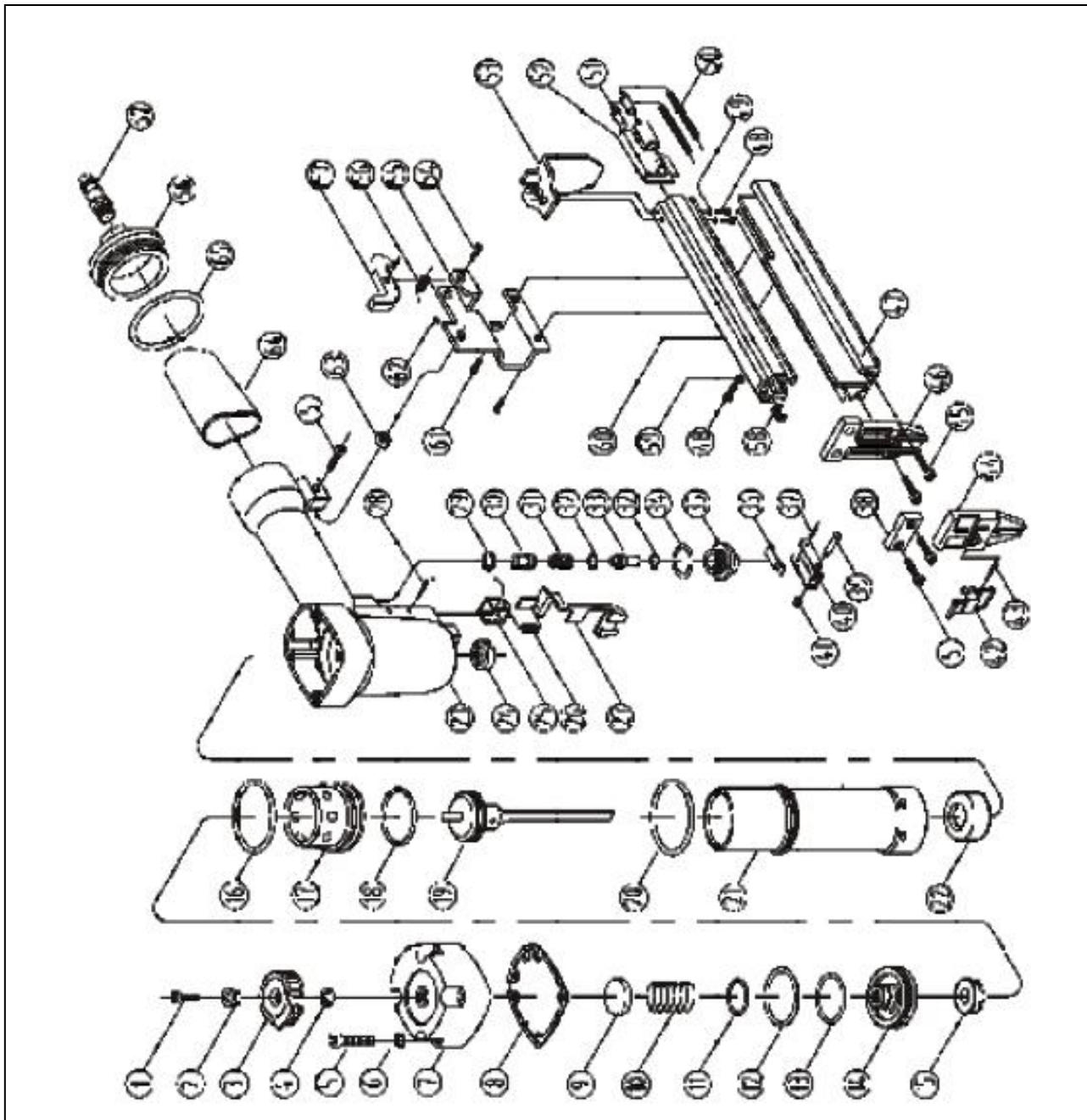
NOTE: If nails continue to jam frequently in nosepiece, have tool serviced by an authorized WEN® service center.

Troubleshooting

Caution: Stop using the tool immediately if any of the following problems occur. Serious personal injury could occur. Any repairs or replacements must be done by a qualified person or an authorized WEN[®] service center only.

Problem	Cause	Solution
Air leaking at Trigger area	<ol style="list-style-type: none"> 1. O-ring in trigger valve is damaged. 2. Trigger valve head are damaged. 3. Trigger valve stem, seal or O-ring are damaged. 	<ol style="list-style-type: none"> 1. Check and replace O-ring. 2. Check and replace trigger valve head. 3. Check and replace trigger valve stem, seal or O-ring.
Air leaking between body and drive guide (52)	Damaged piston O-ring or bumper	Check and replace O-ring or bumper.
Air leaking between body and cylinder cap	<ol style="list-style-type: none"> 1. Screw loose. 2. Damaged seal. 	<ol style="list-style-type: none"> 1. Tighten screws. 2. Check and replace seal.
Blade driving fastener too deeply	<ol style="list-style-type: none"> 1. Worn bumper. 2. Air pressure is too higher. 	<ol style="list-style-type: none"> 1. Replace bumper. 2. Adjust the air pressure.
Runs slowly or has power loss	<ol style="list-style-type: none"> 1. Insufficient oil. 2. Insufficient air supply. 3. Broken spring in cylinder cap. 4. Exhaust port in cylinder cap is blocked. 	<ol style="list-style-type: none"> 1. Lubricate as instructed. 2. Check air supply. 3. Replace spring. 4. Replace damaged internal parts.
Tool skip a fasteners	<ol style="list-style-type: none"> 1. Worn bumper or damaged spring (50). 2. Dirt in drive guide (46). 3. Inadequate airflow to tool. 4. Worn or dry O-ring on piston. 5. Damaged O-ring on trigger valve. 6. Cylinder cap seal leaking. 	<ol style="list-style-type: none"> 1. Replace bumper or pusher spring. 2. Clean drive channel of front plate. 3. Check hose and compressor fittings. 4. Replace O-ring or lubricate. 5. Replace O-ring. 6. Replace seal.
Fasteners are jammed	<ol style="list-style-type: none"> 1. Joint guide is worn. 2. Fasteners are wrong size or damaged. 3. Magazine or front plate screws are loose. 4. Blade in piston assembly is damaged. 	<ol style="list-style-type: none"> 1. Replace joint guide. 2. Use the recommended and undamaged fasteners. 3. Tighten screws. 4. Replace piston assembly.
Tool will not drive down tight	<ol style="list-style-type: none"> 1. Worn blade in piston assembly. 2. Lack of power. 3. Slow cycling and loss of power. 	<ol style="list-style-type: none"> 1. Replace piston assembly. 2. Adjust to adequate air pressure. 3. Check cylinder cap spring for broken coils or reduced length. Check if exhaust port of cylinder cap is restricted.

Exploded View



Parts List

Item	Stock #	Description
1	61710-001	SCREW
2	61710-002	BUSHING
3	61710-003	EXHAUST COVER
4	61710-004	SEAL
5	61710-005	SCREW
6	61710-006	SPRING WASHER
7	61710-007	CYLINDER CAP
8	61710-008	GASKET
9	61710-009	SEAL
10	61710-010	SPRING
11	61710-011	O-RING
12	61710-012	O-RING
13	61710-013	O-RING
14	61710-014	VALVE
15	61710-015	STOPPED WASHER
16	61710-016	O-RING
17	61710-017	COLLAR
18	61710-018	O-RING
19	61710-019	PISTON ASSEMBLY
20	61710-020	O-RING
21	61710-021	CYLINDER
22	61710-022	BUMPER
23	61710-023	BODY
24	61710-024	JOINT GUIDE
25	61710-025	SAFE GUIDE
26	61710-026	SPRING
27	61710-027	SAFE BRACKET
28	61710-028	PIN
29	61710-029	SEAL
30	61710-030	TRIGGER VALVE HEAD
31	61710-031	SPRING
32	61710-032	O-RING
33	61710-033	TRIGGER VALVE STEM
34	61710-034	O-RING

Item	Stock #	Description
35	61710-035	TRIGGER VALVE GUIDE
36	61710-036	TRIGGER SPRING
37	61710-037	PIN
38	61710-038	PLATE
39	61710-039	PIN
40	61710-040	TRIGGER
41	61710-041	WASHER
42	61710-042	LATCH ASSEMBLY
43	61710-043	PIN
44	61710-044	FRONT PLATE
45	61710-045	SCREW
46	61710-046	DRIVE GUIDE
47	61710-047	FIXED MAGAZINE
48	61710-048	SCREW
49	61710-049	WASHER
50	61710-050	SPRING
51	61710-051	SPRING SEAT
52	61710-052	SHOE FEEDER
53	61710-053	STOPPED PLATE
54	61710-054	PIN
55	61710-055	SUPPORT
56	61710-056	TORSION SPRING
57	61710-057	LOCK
58	61710-058	BLOCK
59	61710-059	SPRING WASHER
60	61710-060	MOVABLE MAGAZINE
61	61710-061	SCREW
62	61710-062	LOCKING WASHER
63	61710-063	NUT
64	61710-064	SOFT GRIP SLEEVE
65	61710-065	O-RING
66	61710-066	END CAP
67	61710-067	AIR PLUG

Limited One Year Warranty

WEN Products is committed to build tools that are dependable for years. Our warranties are consistent with this commitment and our dedication to quality

LIMITED WARRANTY OF WEN CONSUMER POWER TOOLS PRODUCTS FOR HOME USE

GREAT LAKES TECHNOLOGIES, LLC ("Seller") warrants to the original purchaser only, that all WEN consumer power tools will be free from defects in material or workmanship for a period of one (1) year from date of purchase. Ninety days for all WEN products, if the tool is used for professional use.

SELLER'S SOLE OBLIGATION AND YOUR EXCLUSIVE REMEDY under this Limited Warranty and, to the extent permitted by law, any warranty or condition implied by law, shall be the repair or replacement of parts, without charge, which are defective in material or workmanship and which have not been misused, carelessly handled, or misrepaired by persons other than Seller or Authorized Service Center. To make a claim under this Limited Warranty, please contact us at 1-800-232-1195 or write to us at WEN Products, 501 Davis Road, Elgin, IL 60123. To acquire service, you will have to provide proof of purchase and may be asked to ship the tool back to us freight prepaid.

THIS LIMITED WARRANTY DOES NOT APPLY TO ACCESSORY ITEMS SUCH AS CIRCULAR SAW BLADES, DRILL BITS, ROUTER BITS, JIGSAW BLADES, SANDING BELTS, GRINDING WHEELS AND OTHER RELATED ITEMS.

ANY IMPLIED WARRANTIES SHALL BE LIMITED IN DURATION TO ONE (1) YEAR FROM DATE OF PURCHASE. SOME STATES IN THE U.S., SOME CANADIAN PROVINCES DO NOT ALLOW LIMITATIONS ON HOW LONG AN IMPLIED WARRANTY LASTS, SO THE ABOVE LIMITATION MAY NOT APPLY TO YOU.

IN NO EVENT SHALL SELLER BE LIABLE FOR ANY INCIDENTAL OR CONSEQUENTIAL DAMAGES (INCLUDING BUT NOT LIMITED TO LIABILITY FOR LOSS OF PROFITS) ARISING FROM THE SALE OR USE OF THIS PRODUCT. SOME STATES IN THE U.S. AND SOME CANADIAN PROVINCES DO NOT ALLOW THE EXCLUSION OR LIMITATION OF INCIDENTAL OR CONSEQUENTIAL DAMAGES, SO THE ABOVE LIMITATION OR EXCLUSION MAY NOT APPLY TO YOU.

THIS LIMITED WARRANTY GIVES YOU SPECIFIC LEGAL RIGHTS, AND YOU MAY ALSO HAVE OTHER RIGHTS WHICH VARY FROM STATE TO STATE IN THE U.S., PROVINCE TO PROVINCE IN CANADA AND FROM COUNTRY TO COUNTRY.

THIS LIMITED WARRANTY APPLIES ONLY TO PORTABLE ELECTRIC TOOLS, BENCH POWER TOOLS, OUTDOOR POWER EQUIPMENT AND PNUMATIC TOOLS SOLD WITHIN THE UNITED STATES OF AMERICA, CANADA AND THE COMMONWEALTH OF PUERTO RICO. FOR WARRANTY COVERAGE WITHIN OTHER COUNTRIES, CONTACT THE WEN CUSTOMER SUPPORT.