

SURFACE WIRING

PLUGMOLD® TOUGH

Power Strips

**Tough looks. Easy installation.
The power you need.**

They don't just look tough. They are tough. Plugmold Tough Multi-Outlet Strips are easy to handle and easy to install. Genuine diamond-plate aluminum looks great on workbenches, in garages, or anywhere you need to access up to 10 power outlets.



TOOLS YOU'LL NEED:

- Phillips head screwdriver
- Tape measure

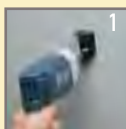
PLUGMOLD TOUGH parts checklist:



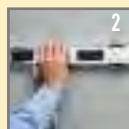
PM48TC Diamond-plate Multi-outlet Strip
48" long with 10 outlets and circuit breaker. 6' cord.
48" L x 1²⁹/₃₂" W x 7⁷/₈" H
1219.2mm L x 48mm W x 22.2mm H



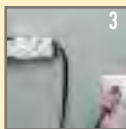
Easy to install:



1
Mount bracket to wall.



2
Attach Plugmold Tough Strip.



3
Plug it in.