



INVERTER GENERATOR PARALLEL PACK



MODEL: PG-iPAIR-B1

INSTRUCTION MANUAL

PULSAR PRODUCTS INC. 2051 S. Lynx Place Ontario, CA, U.S.A. 91761
1-866-591-8921

FOLLOW THESE INSTRUCTIONS CAREFULLY

Proper installation is essential for safe, reliable operation.

This Parallel Box PG-iPAIR-B1 is designed for connecting two PG2000iS Inverter generators to supply power to the RV (TT-30R) and L5-30R receptacles on the PG-iPAIR-B1 parallel box.

NOTICE:

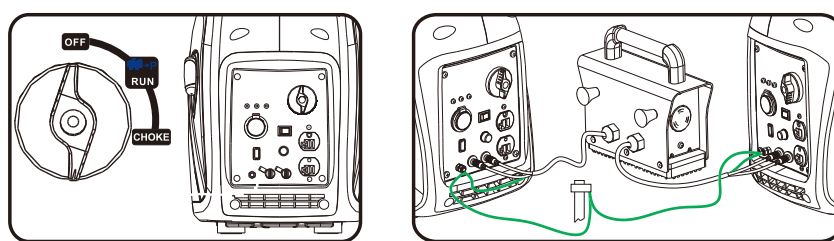
Before use, review the Generators user's manual to become familiar with basic generator operation, safety information, and parallel generator operation. Keep these instructions with the owner's manual. Periodically inspect the cables for damage, and replace the cable kit if the insulation is broken or cracked.

WARNING:

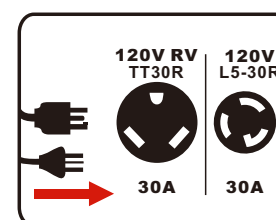
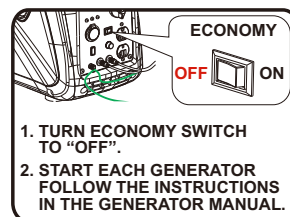
Connecting two generators that are not the same model using parallel cables may cause a low voltage output, which can damage tools and appliances powered by the generators or the generator. There is also a risk of death or injury. **Please read and follow all manuals and labels carefully before operation.**

INSTALLATION:

1. Make sure each generator's engine switch is OFF.
2. Connect the parallel Cables to the parallel ports on the generators.
3. Connect the ground wires to each generator's ground post found on the control panel.
4. Connect an Earth Ground to the ground post on the PG-iPAIR-B1 parallel box ground stud.
5. Make sure parallel installation is correct without cracked or damaged wires.
6. Make sure the parallel box has no load on it. (Unplug the cords)



7. Start generators one by one and make sure operation indicator lights are ON.
8. After both generators are started and stable the parallel box can be loaded.

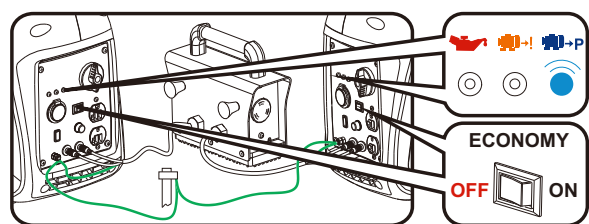


IMPORTANT:

Turn the Economy switch to the OFF position to reduce voltage changes. With the generators running make sure both green output indicator lights are ON. If both lights are not ON, turn the generators off, restart the generators and make sure both green output lights are ON. The PG-iPAIR-B1 Parallel Box has a POWER INDICATOR light that will light when the parallel box has power to it.

The following definitions are provided to help establish proper parallel cable operation.

Rated power (continuous) - The amount of power the generators can provide continuously.



Rated Power

Two PG2000iS generators in parallel has a rated Watts of 3000W and 25A at 125V

Maximum Power

Two PG2000iS generators in parallel has maximum Wattage of 4000 Watts and 33.3 Amps

Appliance Power Requirement - The total power requirements (Volts x Amps x PF = Watts) of all appliances connected must be considered. Appliance and power tool manufacturers usually list rating information.

Substantial overloading will shut off the AC output. Exceeding the time limit for maximum power operation or slightly overloading the generator will switch the AC circuit protector OFF within limited time, and will shorten the service life of the generator.

Generator Operation

You can use more than one receptacle during operation, subject to the following limitations:

- The total combined load on all outlets cannot exceed 25 amps (rated) or 33.3A amps maximum). Exceeding the maximum load on all outlets combined will cause the overload indicator (red) to come on, and after about 3 seconds, the current to the connected loads will turn off.
- The combined loads on the Duplex receptacles cannot exceed 20 amps
- The load on the RV or L5-30R twist lock receptacle cannot exceed 25 amps (rated) or 33.3 amps (maximum). Exceeding the maximum load on receptacle will cause the overload indicator (red) to come on, and the after about 3 seconds, the current to the connected load will cut off.

PG-iPAIR-B1 GENERAL SPECIFICATIONS

MODEL	PG-iPAIR-B1
TYPE	PARALLEL BOX
VOLTS	125V
AVAILABLE CURRENT	30A
PARALLEL LEAD LENGTH	39in. (1m)
UNIT DIMENSIONS	220mm X 115mm X 215mm
NET WEIGHT	7.1lbs. (3.2kg)
COUNTRY OF ORIGIN	CHINA

SCHEMATIC

