



Wall Mounted Kitchen Pot Filler

Model Number:

KTS17-TB (brushed nickel)

KTS17-TC (chrome)

KTS17-TO (oil rubbed bronze)

Features:

- Solid brass waterway with metal handles
- Cold water only
- Drip free ceramic cartridge
- Maximum flow rate 2.2 gpm at 60 psi
- 1/2" IPS inlet

- Complies with:

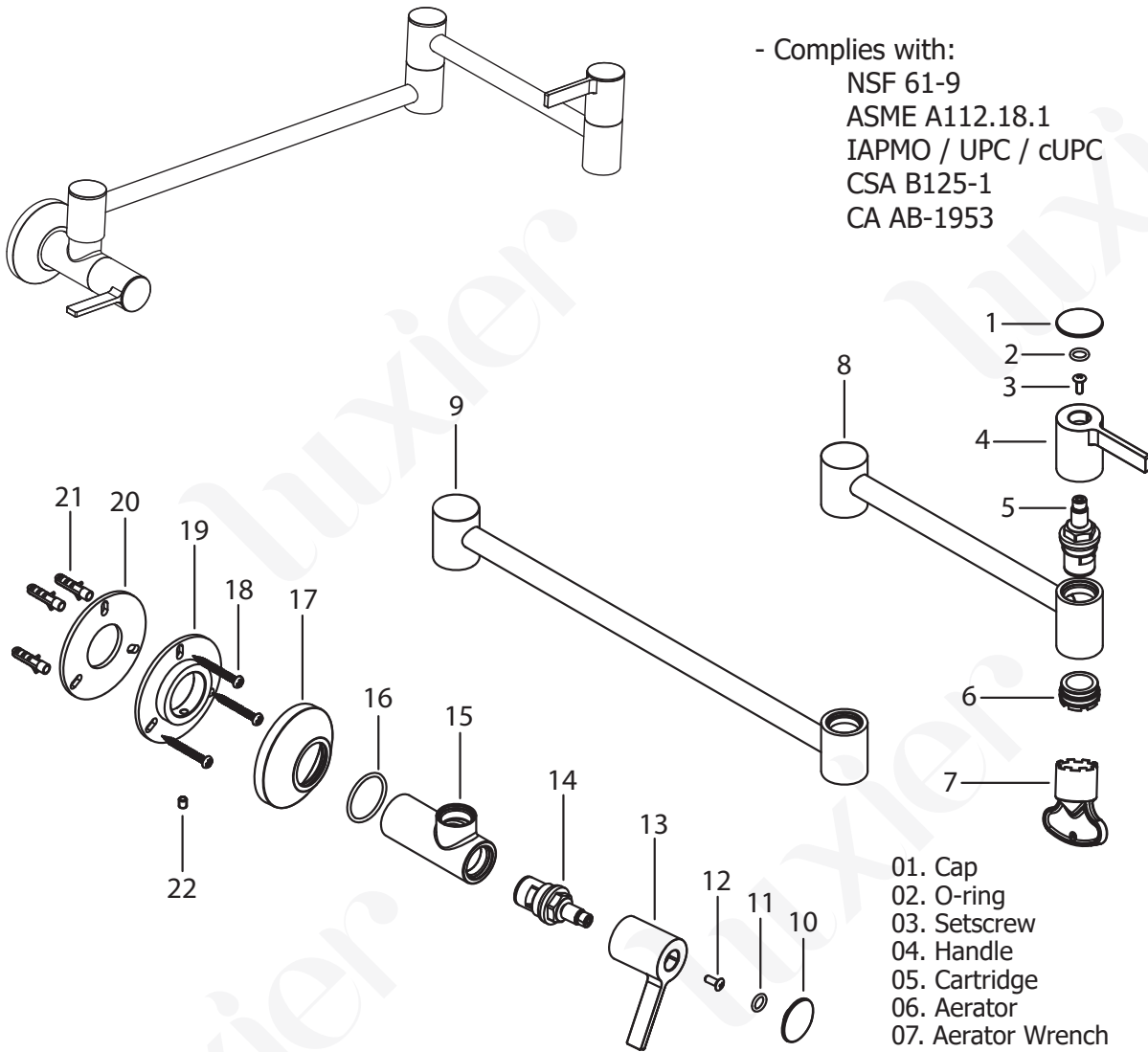
NSF 61-9

ASME A112.18.1

IAPMO / UPC / cUPC

CSA B125-1

CA AB-1953



01. Cap
02. O-ring
03. Setscrew
04. Handle
05. Cartridge
06. Aerator
07. Aerator Wrench
08. Faucet Extension Arm
09. Faucet Extension Arm
10. Cap
11. O-ring
12. Setscrew
13. Handle
14. Cartridge
15. Body
16. O-ring
17. Flange
18. Screws (x3)
19. Mounting Base
20. Rubber Washer
21. Wall Anchors (x3)
22. Setscrew