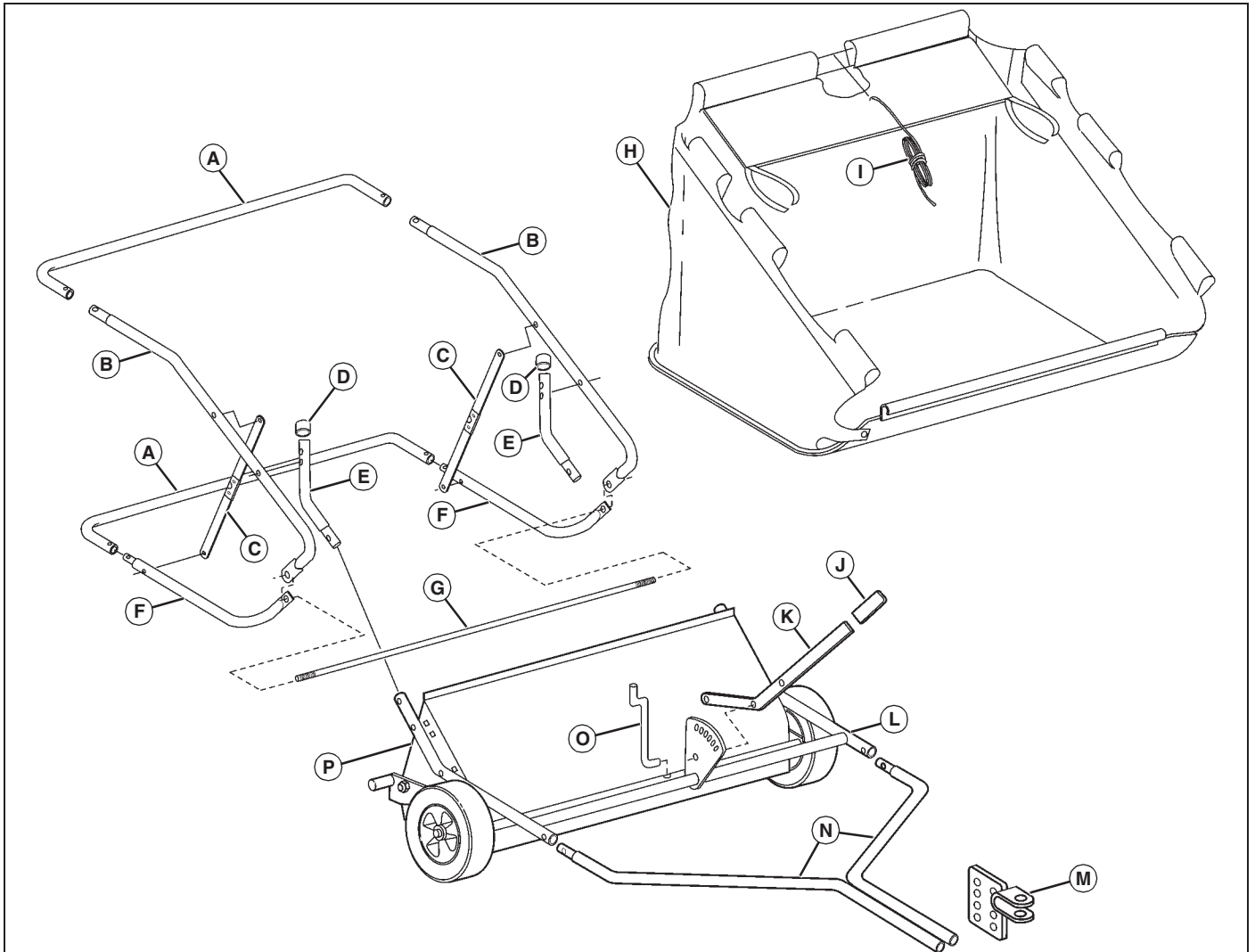


ASSEMBLY

Parts in Kit

Assembly



MX34943

Qty.	Description	Qty.	Description
		1	Upper Frame Assembly (L)
2	Rear Tube (A)	1	Hitch Clevis Assembly (M)
2	Upper Tube (B)	2	Tow Tube (N)
2	Spreader Bar Assembly (C)	1	Lift Link (O) (reference, included in Bag of Parts A)
2	Vinyl Cap (D) (reference, included in Bag of parts B)	1	Brush Housing Assembly / Drive Unit (P)
2	Hamper Mount Tube (E)		
2	Lower Tube (F)		
1	Hamper Stop Rod (G)		
1	Hamper, w/ Windscreen (H)		
1	Hamper Pull Rope (I)		
1	Flat Grip (J) (reference, included in Bag of Parts A)		
1	Lift Handle (K)		
		Bag of Parts - Hardware (marked A)	
		Qty.	Description
		2	Hex Bolt, 5/16 x 2-1/4 in.
		2	Hex Bolt, 5/16 x 1-1/2 in.
		1	Hex Bolt, 5/16 x 1-3/4 in.
		4	Carriage Bolt, 5/16 x 1-1/2 in.
		4	Screw, 1/4 x 1-1/4 in.

ASSEMBLY

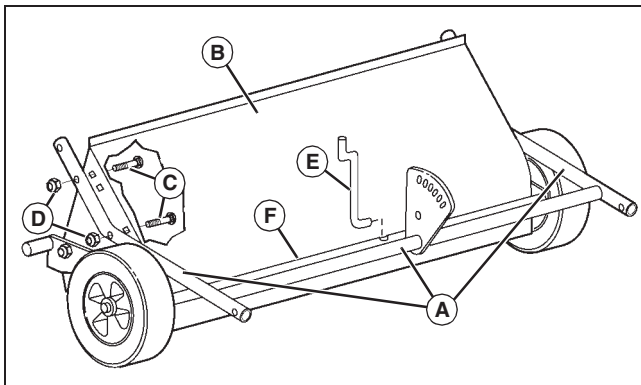
Qty.	Description
1	Lock Pin
1	Hitch Pin, 1/2 in. diameter.
1	Large Hairpin Cotter
1	Lock Washer, 5/16 in.
2	Flat Washer, 5/16 in.
1	Standard Nut, 5/16 in.
9	Nylock Nut, 5/16 in.
4	Lock Nut, 1/4 in.
4	Push Connector, 5/16 x 5/8 in.
1	Spring
1	Flat Grip
1	Lift Link

Bag of Parts - Hardware (marked B)

Qty.	Description
2	Bolt, 5/16 x 2-1/4 in.
2	Clevis Pin, 5/16 x 1-3/8 in.
2	Small Hairpin Cotter
4	Special Flat Washer
2	Nylock Nut, 5/16 in.
2	Standard Nut, 3/8 in.
2	Lock Nut, 3/8 in.
2	Vinyl Cap

Assemble Front Frame and Lift Assembly

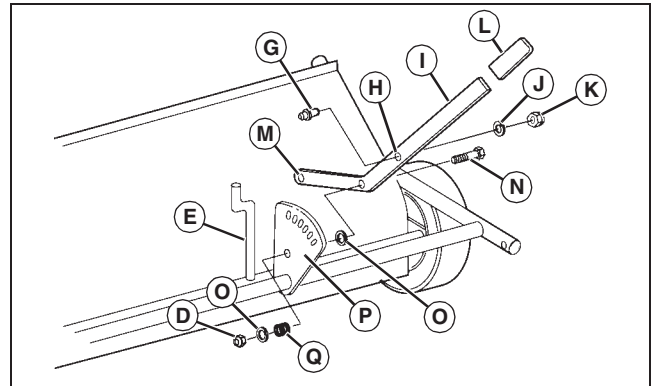
NOTE: Use Hardware Bag A components for this sequence.



MX33922

1. Align the upper frame assembly (A) with the brush housing assembly (B) and secure on each side with two 5/16 x 1-1/2 in. carriage bolts (C) (installed from the inside, as shown) and 5/16 in. nylock nuts (D). Tighten hardware.

2. Insert lift link (E) into hole in cross tube (F), oriented as shown



MX33923

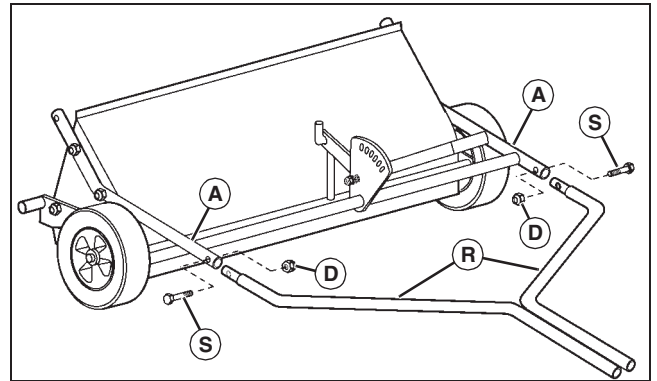
3. Insert the threaded end of lock pin (G) into upper hole (H) in lift handle (I) and secure using a 5/16 in. lock washer (J) and 5/16 in. standard nut (K).

4. Install the flat grip (L) on the end of the lift handle.

5. Rotate the lift handle and assemble it to the lift link (E) through the lower hole (M).

6. Install a 5/16 x 1-3/4 in. hex bolt (N) through the middle hole in the lift handle (I), then install a 5/16 in. flat washer (O) onto the hex bolt on the other side of the lift handle, as shown.

7. Align the lift handle against the lock plate (P), with the lock pin in one of the seven index holes at the top of the lock plate and the hex bolt through the lower hole. Secure with spring (Q), 5/16 in. flat washer (O) and 5/16 in. nylock nut (D). Tighten lock nut, then back off as necessary for proper operation.



MX33924

8. Install the two tow tubes (R) into the upper frame assembly (A), and secure with two 5/16 x 1-1/2 in. hex bolts (S) inserted from the outside, and 5/16 in. nylock nuts (D) at the inside. Tighten hardware only finger-tight at this time.