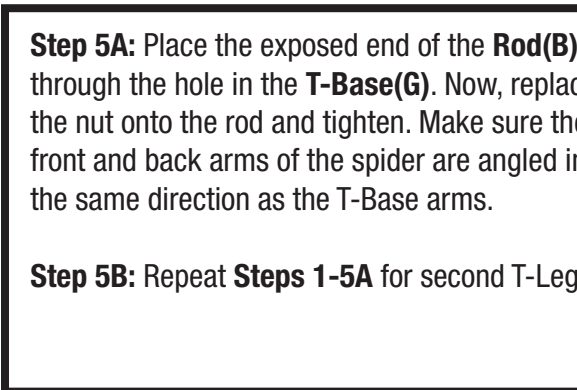
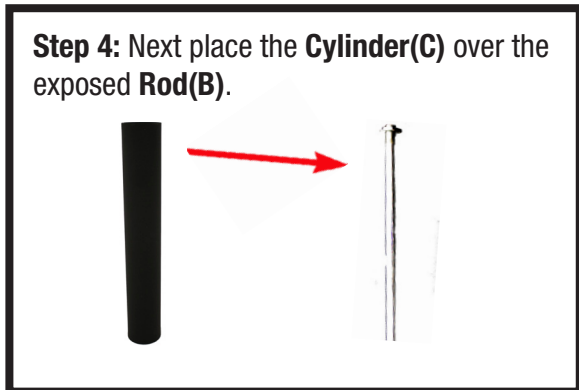
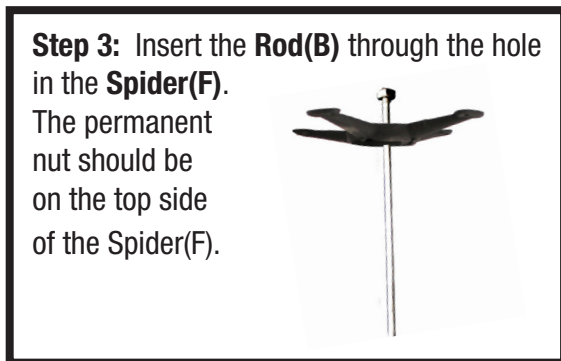
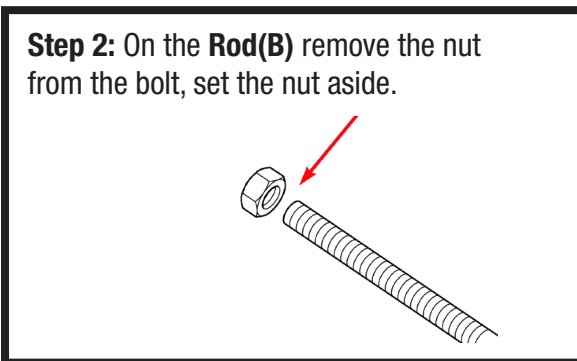
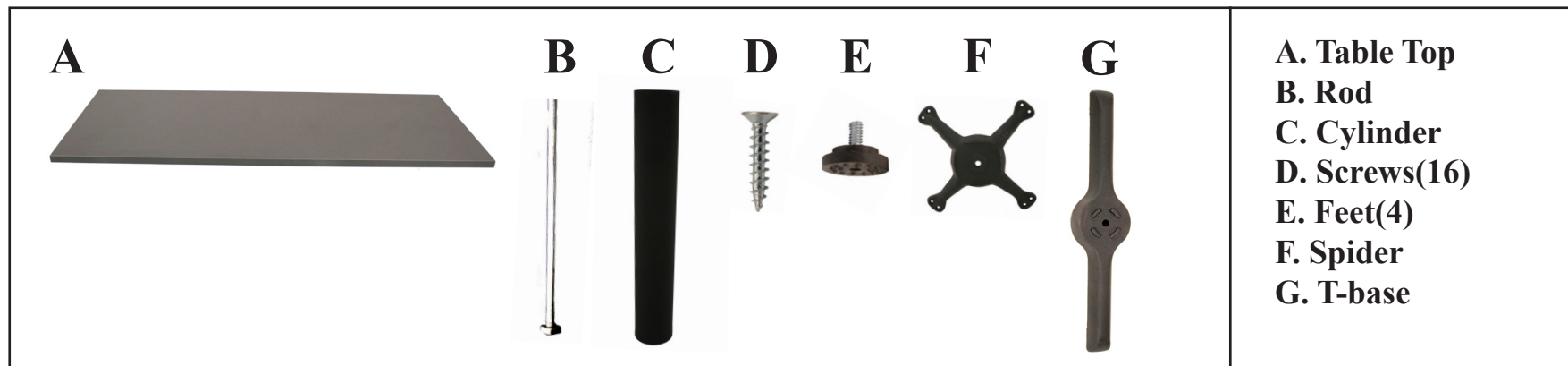


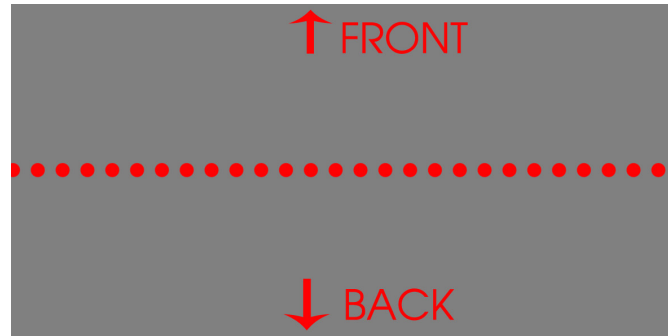
## Cain Rectangle T-Base Legs

Organize your parts. You will need a phillips head screw driver, pencil and measuring tape, drill(optional).  
Two people are required for assembly.



**Step 6:** Prepare your Template (INCLUDED) by adhering both template pages to one another on the dashed line.

**Step 7:** On a clean flat surface, turn **Table Top(A)** upside down. Draw a horizontal lines across the table bottom that is equidistant from front to back of the table top.



**Step 8:** Place each T-Leg equidistant from the Left and Right edges of the table top at user's desired distance.

**Step 9:** Attach T-Legs to **Table Top(A)** using **8 Screws(D)** per T-Leg. Flip Table over when complete.



## IMPORTANT NOTICE

Place all wooden parts on a clean and smooth surface such as a rug or carpet to avoid the parts from being scratched.

Check to be sure that you have a ll parts and hardware.

Remove all wrapping materials, including staples & packing straps before you start to assemble.

Do not tighten all screws/bolts until completely assembled.

Keep all hardware parts out of reach of children.

Any problems or questions please call Regency Office Furniture at 1-866-816-9822