

## LINEN INSTALLATION

Hardware for installation not included.

### UPPER FLUSH-FIT END PANEL

Before beginning the cabinet installation, you will need to apply the finished flush-fit end panels to the side(s) of the cabinet that will be exposed to the room.

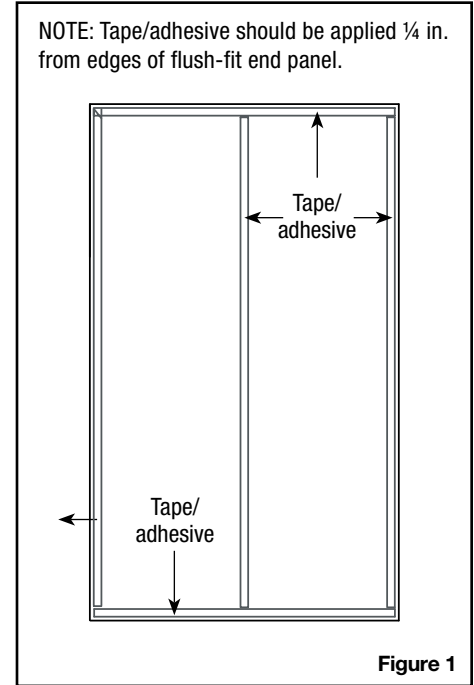
Refer to Instructions provided with flush-fit end panels for the base.

### MATERIALS

Finished flush-fit end panel and a roll of double-sided tape (suggested 1 roll per flush-fit end panel) or construction adhesive or white glue (neither are provided).

### APPLY FLUSH-FIT END PANEL TO CABINET SIDE PANEL

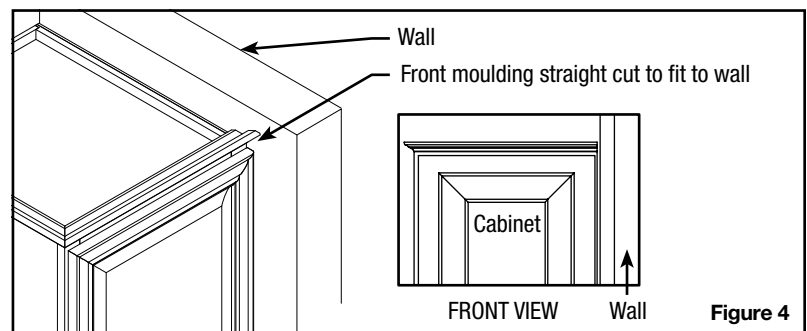
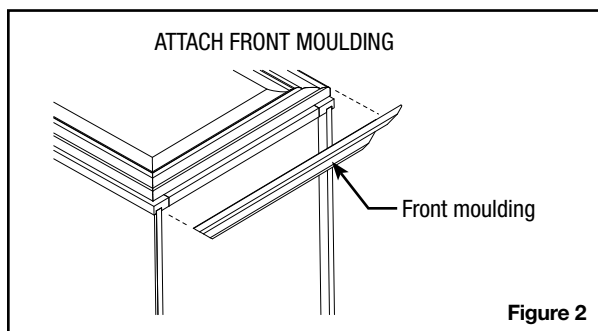
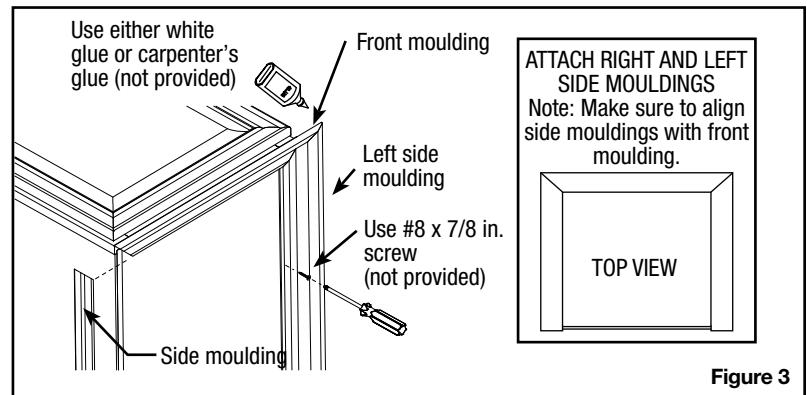
- Remove the backer from each tape strip.
- Holding the flush-fit end panel at an angle from the cabinet side panel, align the front edge of the flush-fit end panel to the face frame. Make sure the entire edge of the flush-fit end panel is seated inside the face frame groove.
- Align the top of the flush-fit end panel with the top of the cabinet side panel and press the flush-fit end panel against the side panel.
- Working from front to back, apply pressure along the entire surface of the flush-fit end panel to make sure each tape/adhesive strip makes complete contact with the cabinet side panel.
- Allow the tape/adhesive to cure for at least 1 hour before proceeding with the cabinet installation. Clamps or weights can be added to secure panel until adhesive dries. Check adhesive manufacturer's instructions for cure time.



### INSTALL LINEN CROWN MOULDING

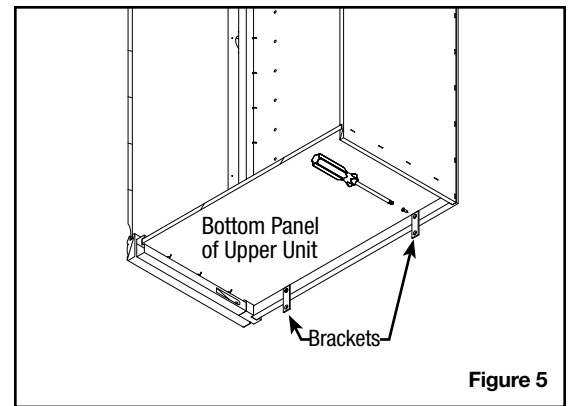
Crown moulding, sold separately, can be installed on the linen cabinet. The length of crown moulding pieces will need to be cut from the full-length piece. You will need to miter the pieces to fit the linen. Please see Figures 2 and 3 on how to install the crown moulding to the cabinet. If your linen will be installed with a side against a wall it is not necessary to attach moulding to the side against the wall. Cut to fit your wall (Figure 4).

Options for attachment: #6 x 3/4 in. wood screws or brad nails (neither are provided). Pre-drilling pilot holes first will help prevent splitting.

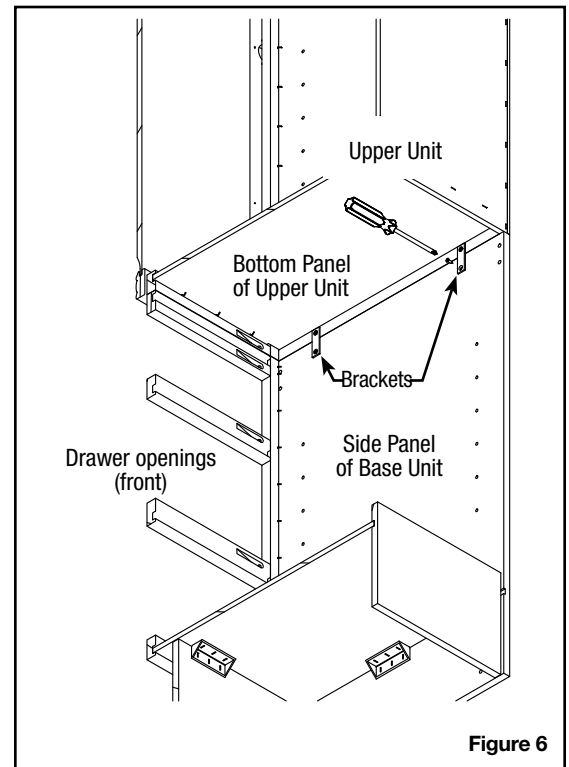


## 2-PIECE LINEN ASSEMBLY

The linen with drawers and linen with doors are 2-piece units that require assembly prior to installation. The upper unit has four attachment brackets (provided in parts bag) that need to be installed at the bottom interior of the unit. Install the brackets on the upper unit before placing on top of the base. Pre-drilling pilot holes will ease the seating of the screws (Figure 5).

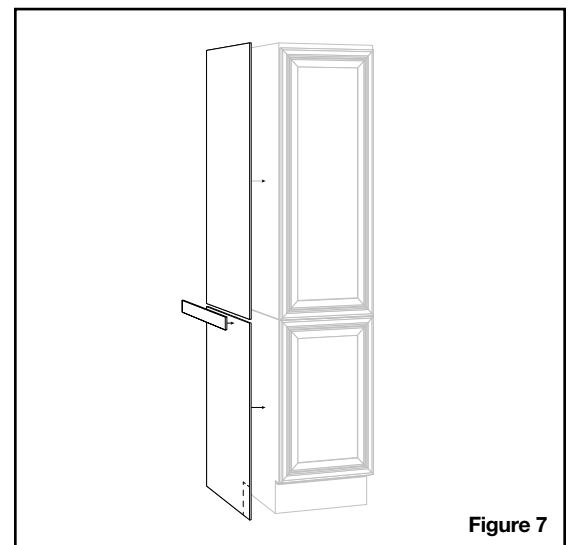


If you purchased a linen with drawers, you need to remove the drawers to have access to the attachment brackets on the upper unit. Align the upper and lower units, first making sure the front of the linens (face frame) line up, then the sides. (The overall width of one unit may be slightly larger than the other unit. This is normal and does not compromise the functionality or structural integrity of the units.) Once the top and bottom units are aligned, secure the two together by screwing the brackets to the base (Figure 6).



The flush-fit end panel comes with one side moulding piece to install over the seam line between the upper and lower units. If a side of the linen is against a wall or cabinet DO NOT install these pieces on that side. If a side of the linen IS NOT against a wall or cabinet, use finishing nails (not provided) to nail the side moulding over the seam line. Three to four finishing nails per side should be sufficient (Figure 7).

Your linen can be installed as part of a cabinet run, or as a standalone unit. In either case, fasten the upper linen to the wall by drilling pilot holes at the stud location through the back panel. Then fasten to the wall with #12 x 3 in. screws. If your linen sits in between the studs, you will need to use toggle bolts to fasten to the wall. It is not recommended to place the linen in a corner where the back is not against a wall. However, if your linen is used in a corner where the back is not against a wall, secure your unit with furniture restraint hardware, such as wall anchor rings and cable restraints. This will prevent the linen from toppling over.



# Care and Cleaning

---

## EXTERIOR CARE AND CLEANING

For normal spills, a damp cloth is sufficient. Remember to dry the surface immediately. Lemon oil is recommended for cleaning wood doors. Most furniture care products, not containing wax, petroleum solvents or silicone can be used for polishing. Do not use caustic agents and/or abrasive scrubbers. Nicks and dings can be repaired using the color sticks. Fill in the scratch or nick using the color stick. A Clear Coat spray may be applied if desired.

## INTERIOR CARE AND CLEANING

Cabinets can be cleaned with a damp sponge or cloth using soapy water. Do not use any type of abrasive scrubbers. Do not let liquids stay on the surfaces for a long period of time. The surface is water resistant, not waterproof.

## MIRRORS

Use a water-dampened cloth to clean the mirror frame. For the mirror, use ammonia-free cleaning products. Avoid using abrasive cleaners.

---

## RSI HOME PRODUCTS, INC. LIMITED WARRANTY

**What This Warranty Covers:** RSI Home Products, Inc. ("RSI") warrants its parts and products to be free of substantial defects in materials and workmanship from the original date of purchase under normal home use. This warranty is offered only to the original consumer purchaser and may not be transferred.

**How Long The Warranty Lasts:** Coverage for all vanity cabinets, fixed vanities, drawer banks, bath storage cabinets, linen cabinets, wall hutches, fillers, and toe kicks last for the life of the product. Coverage for medicine cabinets, mirrors, and accessories lasts for 5 years from the original date of purchase.

**What RSI Home Products Will Do Under The Warranty:** During the warranty period, RSI, at it's option, will repair or replace any part or product that proves to have substantial defects in materials or workmanship, or RSI will provide an equivalent replacement product. In keeping with our policy of continuous product improvement, RSI reserves the right to change specifications in design and materials without notice and with no obligation to retrofit products we previously manufactured.

**How State Law Applies:** This warranty gives you specific legal rights, and you may also have other rights that vary from state to state.

**IMPLIED WARRANTIES:** RSI DISCLAIMS ANY IMPLIED WARRANTY OF MERCHANTABILITY, AND THERE ARE NO WARRANTIES THAT EXTEND BEYOND THE DESCRIPTIONS ON THE FACE HEREOF. TO THE EXTENT THAT SUCH DISCLAIMER IS NOT VALID UNDER APPLICABLE LAW, ANY IMPLIED WARRANTY SHALL BE COEXTENSIVE IN DURATION WITH THIS WARRANTY.

**Wood, Aging and Printing Limitations:** Because of the varying natural characteristics of wood and the effects of aging, product shown in displays and/or printed materials will not be an exact match to new cabinetry you will receive. Depending on the wood characteristics, the age of the sample and the environment of the showroom, samples will show some degree of variation from new product. In addition, you should not expect all doors, drawer fronts, trim or moulding to match exactly in either finish or grain. Variation in wood is normal and unavoidable. In addition, it is not possible to exactly match our colors in printed materials. Therefore, you should view the actual samples when making your color selection.

**What This Warranty Does Not Cover:** This warranty does not cover any problems or damage which result from improper transportation, improper installation, mishandling, misuse, abuse, neglect, abnormal use, commercial use, improper maintenance, non-RSI repairs, accidents, or acts of God, such as hurricanes, fire, earthquakes or floods. This warranty and any applicable implied warranties do not cover incidental or consequential damages arising from any defects in the product, such as labor charges for installation or removal of the product or any associated products. This warranty does not cover defects or damages caused by normal wear & tear, alterations, environmental conditions, humidity absorption, or mold. In addition, variations in wood grain, finish color, aging or other natural wood and stain characteristics are not considered defects and are not covered by this warranty. Some states do not allow the exclusion or limitation of incidental or consequential damages, so the above limitation or exclusion may not apply to you.

**How To Obtain Warranty Services:** If you need replacement parts or would like to make warranty claim, please contact our Customer Service Representative by mail, e-mail, fax, or telephone at the address or phone numbers listed on this page. All warranty claims must include the model number of the product, copy of the original receipt and the nature of the problem. In addition, RSI may at its discretion require inspection of the installation site or authorize the prepaid return of the claimed defective part. Merchandise not pre-approved for return will not be accepted and the associated claim not accepted.

If upon inspection you find our product has a damaged or missing part, it may not be necessary to return the unit to the store of purchase. Please contact RSI Customer Service to obtain a replacement part.